

115°29'10"W 115°28'20"W 115°27'30"W 115°26'40"W 115°25'50"W 115°25'0"W 115°24'10"W 115°23'20"W 115°22'30"W 115°21'40"W

**Pioneer Fire**  
**ID-BOF-000539**  
**August 15, 2016**  
**71,190 Acres**

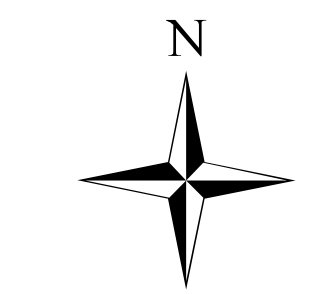
**DIV G / DIV GG**  
**Page 8**



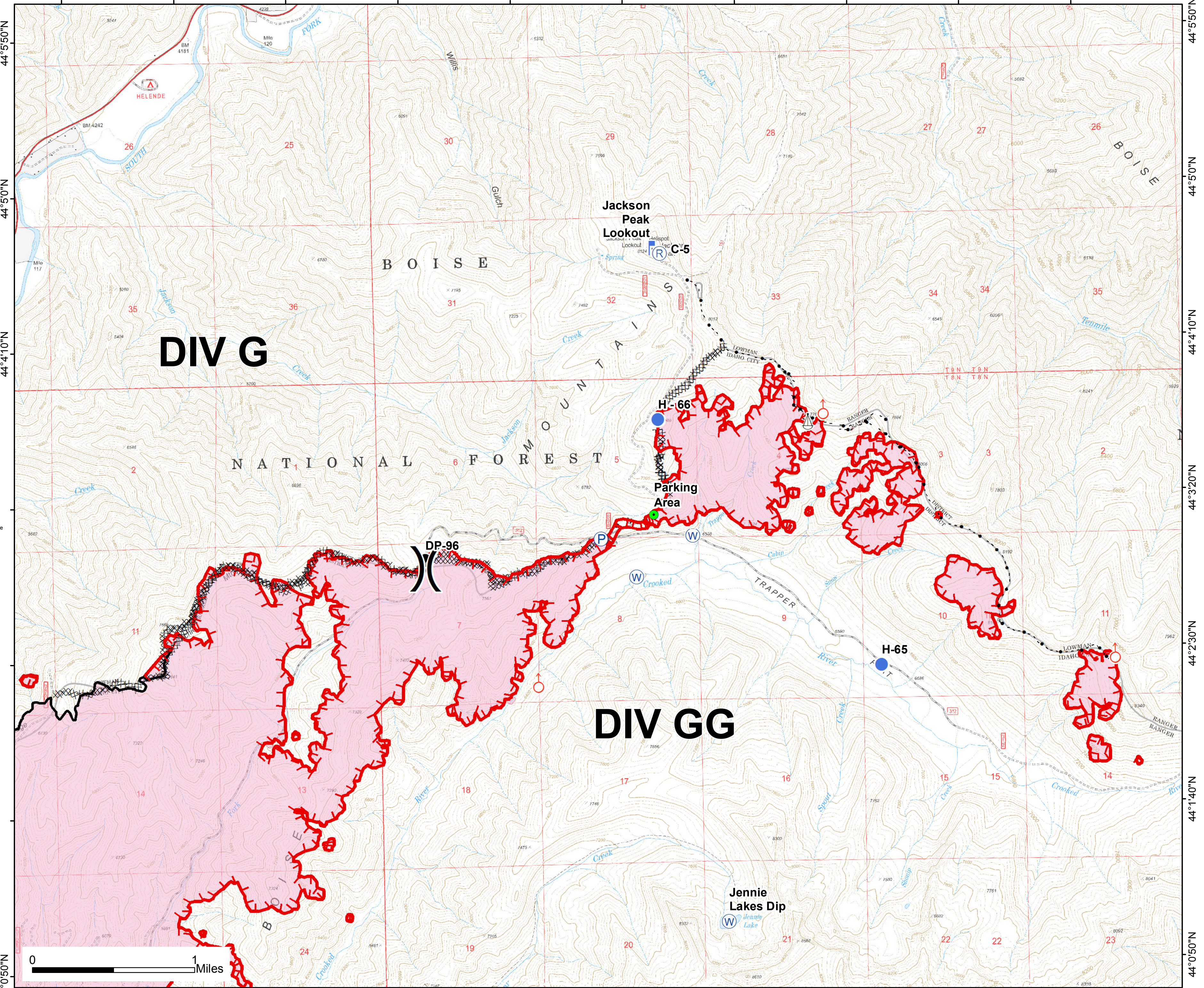
- EventPoint**  
Feature Category (Point Type)
- Drop Point
  - Helispot
  - Highlighted Geographic Feature
  - Lookout
  - Pump
  - Repeater
  - Sling Site
  - Spot Fire
  - Water Source



- EventLine**  
Feature Category (Line Type)
- Uncontrolled Fire Edge
  - Completed Line
  - Road as Completed Line
  - Completed Dozer Line
  - Highlighted Manmade Feature
- EventPolygon**  
Feature Category (Polygon Type)
- Wildfire Daily Fire Perimeter
  - Other



Southern Area Blue Team  
8/14/2016  
9:01:03 PM



44°50'N 44°45'N 44°40'N 44°35'N 44°30'N 44°25'N 44°20'N 44°15'N 44°10'N 44°05'N 44°00'N



115°29'10"W 115°28'20"W 115°27'30"W 115°26'40"W 115°25'50"W 115°25'0"W 115°24'10"W 115°23'20"W 115°22'30"W 115°21'40"W