

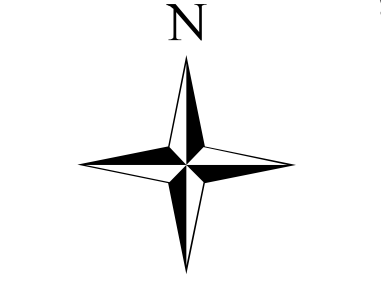
Pioneer Fire
ID-BOF-000539
August 18, 2016
80,370 Acres

DIV H / DIV GG
Page 10

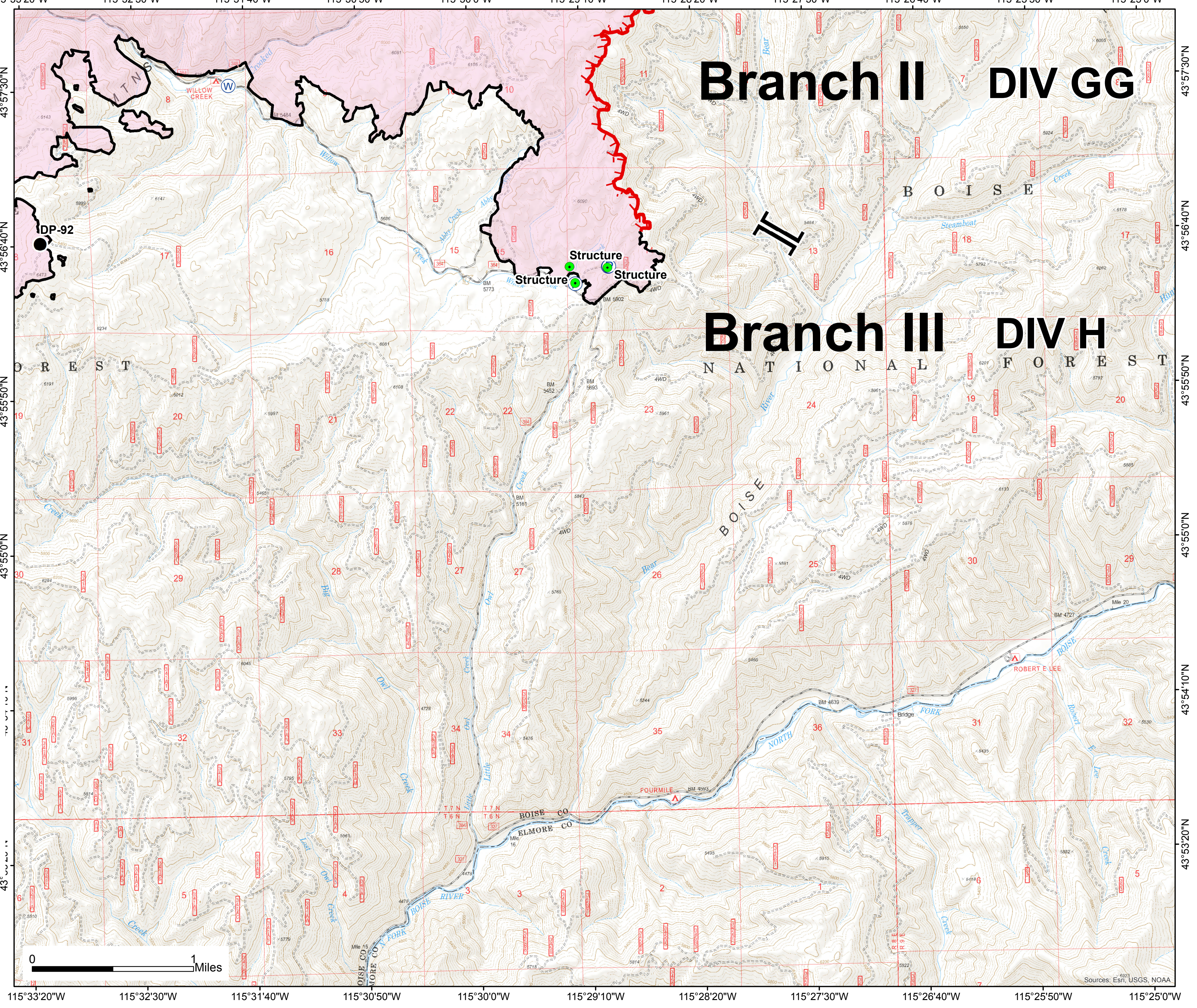


- EventPoint**
Feature Category (Point Type)
- Drop Point
 - Highlighted Geographic Feature
 - Ⓟ Pump
 - Ⓜ Water Source
 - || Branch Break

- EventLine**
Feature Category (Line Type)
- Uncontrolled Fire Edge
 - Completed Line
- EventPolygon**
Feature Category (Polygon Type)
- Wildfire Daily Fire Perimeter



Southern Area Blue Team
8/17/2016
8:37:42 PM



Branch II DIV GG

Branch III DIV H

115°33'20"W 115°32'30"W 115°31'40"W 115°30'50"W 115°30'0"W 115°29'10"W 115°28'20"W 115°27'30"W 115°26'40"W 115°25'50"W 115°25'0"W

43°57'30"N
43°56'40"N
43°55'50"N
43°55'0"N
43°54'10"N
43°53'20"N

Sources: Esri, USGS, NOAA