



Pioneer Fire
ID-BOF-000539
Air Ops Map
August 18, 2016
80,370 Acres

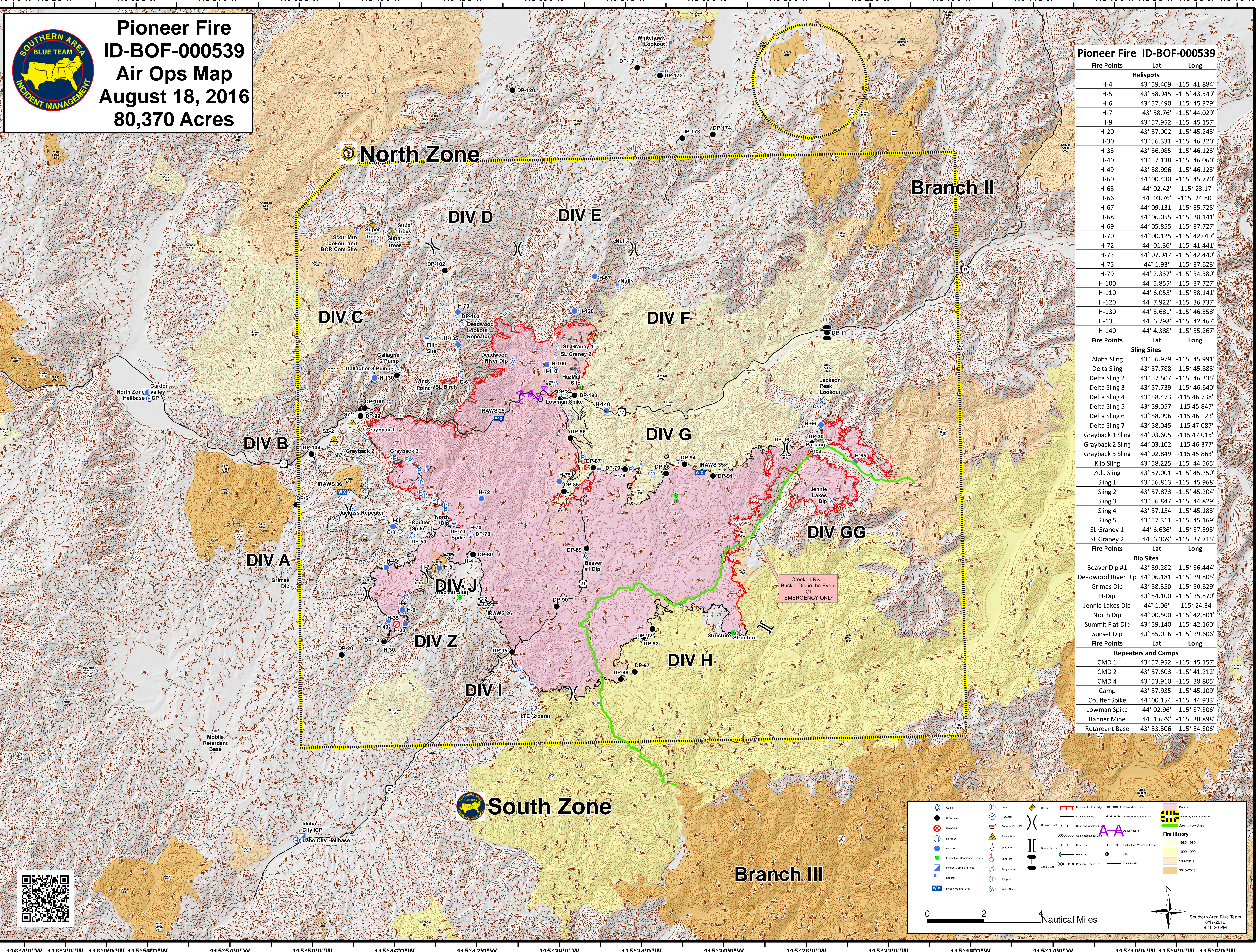
Pioneer Fire ID-BOF-000539

Fire Points	Lat	Long
Helispots		
H-4	43° 59.409'	-115° 41.884'
H-5	43° 58.945'	-115° 43.549'
H-6	43° 57.490'	-115° 45.379'
H-7	43° 58.76'	-115° 44.029'
H-9	43° 57.952'	-115° 45.157'
H-20	43° 57.002'	-115° 45.243'
H-30	43° 56.331'	-115° 46.320'
H-35	43° 56.985'	-115° 46.123'
H-40	43° 57.138'	-115° 46.060'
H-49	43° 58.996'	-115° 46.123'
H-60	44° 00.430'	-115° 45.770'
H-65	44° 02.42'	-115° 23.17'
H-66	44° 03.76'	-115° 24.80'
H-67	44° 09.131'	-115° 35.725'
H-68	44° 06.055'	-115° 38.141'
H-69	44° 05.855'	-115° 37.727'
H-70	44° 00.125'	-115° 42.017'
H-72	44° 01.36'	-115° 41.441'
H-73	44° 07.947'	-115° 42.440'
H-75	44° 1.93'	-115° 37.623'
H-79	44° 2.337'	-115° 34.380'
H-100	44° 5.855'	-115° 37.727'
H-110	44° 6.055'	-115° 38.141'
H-120	44° 7.922'	-115° 36.737'
H-130	44° 5.681'	-115° 46.558'
H-135	44° 6.798'	-115° 42.467'
H-140	44° 4.388'	-115° 35.267'

Fire Points	Lat	Long
Sling Sites		
Alpha Sling	43° 56.979'	-115° 45.991'
Delta Sling	43° 57.788'	-115° 45.883'
Delta Sling 2	43° 57.507'	-115° 46.335'
Delta Sling 3	43° 57.739'	-115° 46.640'
Delta Sling 4	43° 58.473'	-115 46.738'
Delta Sling 5	43° 59.057'	-115 45.847'
Delta Sling 6	43° 58.996'	-115 46.123'
Delta Sling 7	43° 58.045'	-115 47.087'
Grayback 1 Sling	44° 03.605'	-115 47.015'
Grayback 2 Sling	44° 03.102'	-115 46.377'
Grayback 3 Sling	44° 02.849'	-115 45.863'
Kilo Sling	43° 58.225'	-115° 44.565'
Zulu Sling	43° 57.001'	-115° 45.250'
Sling 1	43° 56.813'	-115° 45.968'
Sling 2	43° 57.873'	-115° 45.204'
Sling 3	43° 56.847'	-115° 44.829'
Sling 4	43° 57.154'	-115° 45.183'
Sling 5	43° 57.311'	-115° 45.169'
SL Graney 1	44° 6.686'	-115° 37.593'
SL Graney 2	44° 6.369'	-115° 37.715'

Fire Points	Lat	Long
Dip Sites		
Beaver Dip #1	43° 59.282'	-115° 36.444'
Deadwood River Dip	44° 06.181'	-115° 39.805'
Grimes Dip	43° 58.350'	-115° 50.629'
H-Dip	43° 54.100'	-115° 35.870'
Jennie Lakes Dip	44° 1.06'	-115° 24.34'
North Dip	44° 00.500'	-115° 42.801'
Summit Flat Dip	43° 59.140'	-115° 42.160'
Sunset Dip	43° 55.016'	-115° 39.606'

Fire Points	Lat	Long
Repeaters and Camps		
CMD 1	43° 57.952'	-115° 45.157'
CMD 2	43° 57.603'	-115° 41.212'
CMD 4	43° 53.910'	-115° 38.805'
Camp	43° 57.935'	-115° 45.109'
Coulter Spike	44° 00.154'	-115° 44.933'
Lowman Spike	44° 02.96'	-115° 37.306'
Banner Mine	44° 1.679'	-115° 30.898'
Retardant Base	43° 53.306'	-115° 54.306'



Camp	Pump	Hazard	Uncontrolled Fire Line	Planned Fire Line	Lower Fire
Dip Point	Repeater	Division Break	Completed Fire Line	Planned Secondary Line	Temporary Flight Restriction
Fire Origin	Safety Zone	Road as Completed Road	Completed Down Line	Highlighted Mainline Feature	Sensitive Area
Helibase	Sling Site	Branch Break	Hazard Line	Highlighted Mainline Feature	Fire History
Highlighted Geographic Feature	Spot Fire	Zone Break	Flow Line	Other	1985-1989
Incident Command Post	Staging Area	Proposed Down Line	Hazard Line	Hazard Line	1990-1999
Mobile Weather Unit	Telephone	Hazard Line	Hazard Line	Hazard Line	200-2010
Water Source	Water Source	Hazard Line	Hazard Line	Hazard Line	2010-2015

0 2 4 Nautical Miles

N

Southern Area Blue Team
8/17/2016
9:46:30 PM

