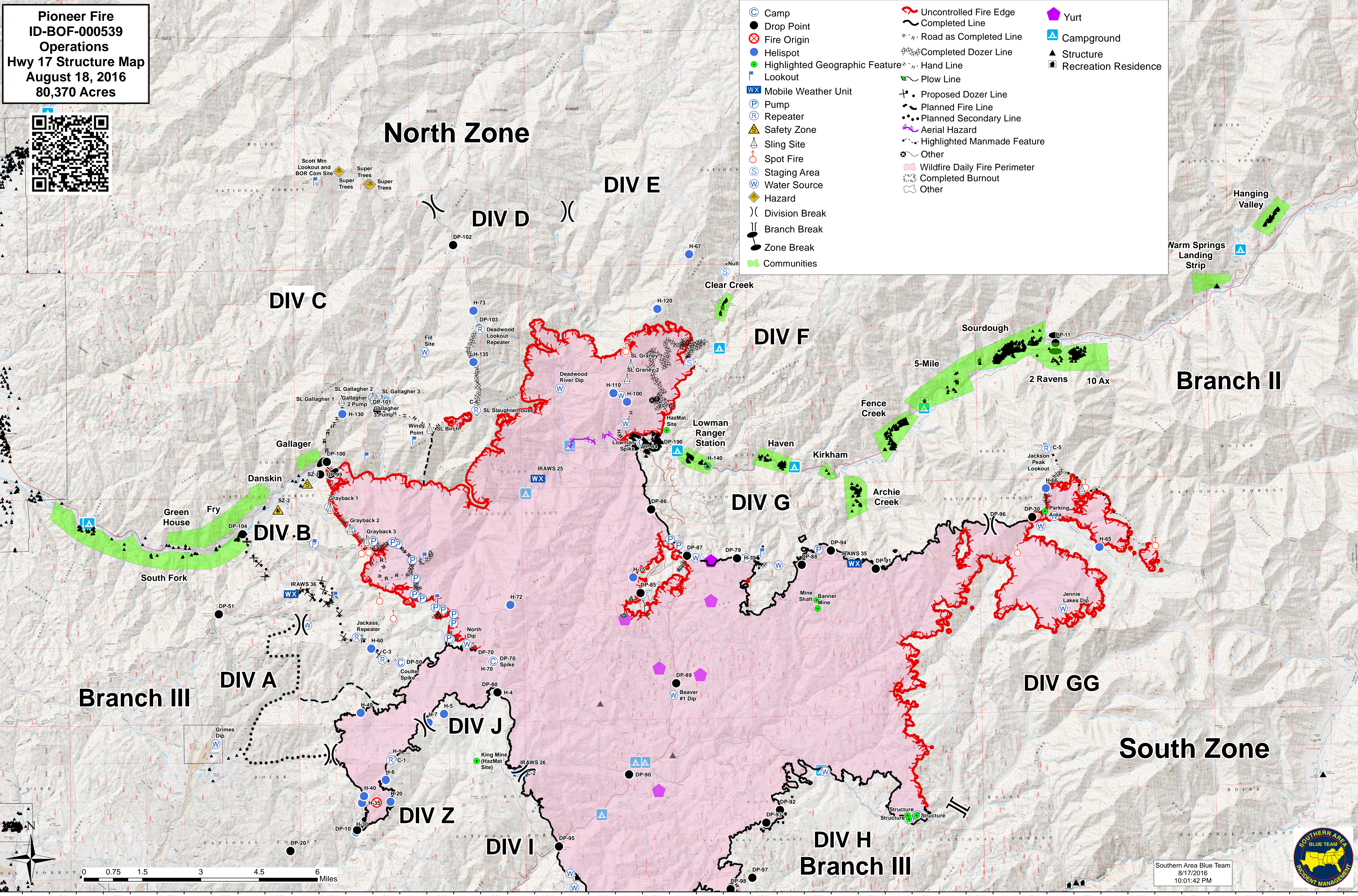


115°56'40"W 115°55'0"W 115°53'20"W 115°51'40"W 115°50'0"W 115°48'20"W 115°46'40"W 115°45'0"W 115°43'20"W 115°41'40"W 115°40'0"W 115°38'20"W 115°36'40"W 115°35'0"W 115°33'20"W 115°31'40"W 115°30'0"W 115°28'20"W 115°26'40"W 115°25'0"W 115°23'20"W 115°21'40"W 115°20'0"W 115°18'20"W 115°16'40"W 115°15'0"W

Pioneer Fire
ID-BOF-000539
Operations
Hwy 17 Structure Map
August 18, 2016
80,370 Acres



- Camp
- Drop Point
- ⊗ Fire Origin
- Helispot
- Highlighted Geographic Feature
- ⌚ Lookout
- WX Mobile Weather Unit
- Ⓟ Pump
- Ⓡ Repeater
- ⚠ Safety Zone
- Ⓢ Sling Site
- Ⓢ Spot Fire
- Ⓢ Staging Area
- Ⓢ Water Source
- ⚠ Hazard
- ⌚ Division Break
- ⌚ Branch Break
- ⌚ Zone Break
- 🌿 Communities
- 🔥 Uncontrolled Fire Edge
- ~ Completed Line
- ⌚ Road as Completed Line
- ⌚ Completed Dozer Line
- ⌚ Hand Line
- ⌚ Plow Line
- ⌚ Proposed Dozer Line
- ⌚ Planned Fire Line
- ⌚ Planned Secondary Line
- ⌚ Aerial Hazard
- ⌚ Highlighted Manmade Feature
- ⌚ Other
- 🌿 Wildfire Daily Fire Perimeter
- ⌚ Completed Burnout
- ⌚ Other
- 🏠 Yurt
- 🏕 Campground
- ⚠ Structure
- 🏠 Recreation Residence



0 0.75 1.5 3 4.5 6 Miles

Southern Area Blue Team
8/17/2016
10:01:42 PM



115°55'50"W 115°54'10"W 115°52'30"W 115°50'50"W 115°49'10"W 115°47'30"W 115°45'50"W 115°44'10"W 115°42'30"W 115°40'50"W 115°39'10"W 115°37'30"W 115°35'50"W 115°34'10"W 115°32'30"W 115°30'50"W 115°29'10"W 115°27'30"W 115°25'50"W 115°24'10"W 115°22'30"W 115°20'50"W 115°19'10"W 115°17'30"W 115°15'50"W