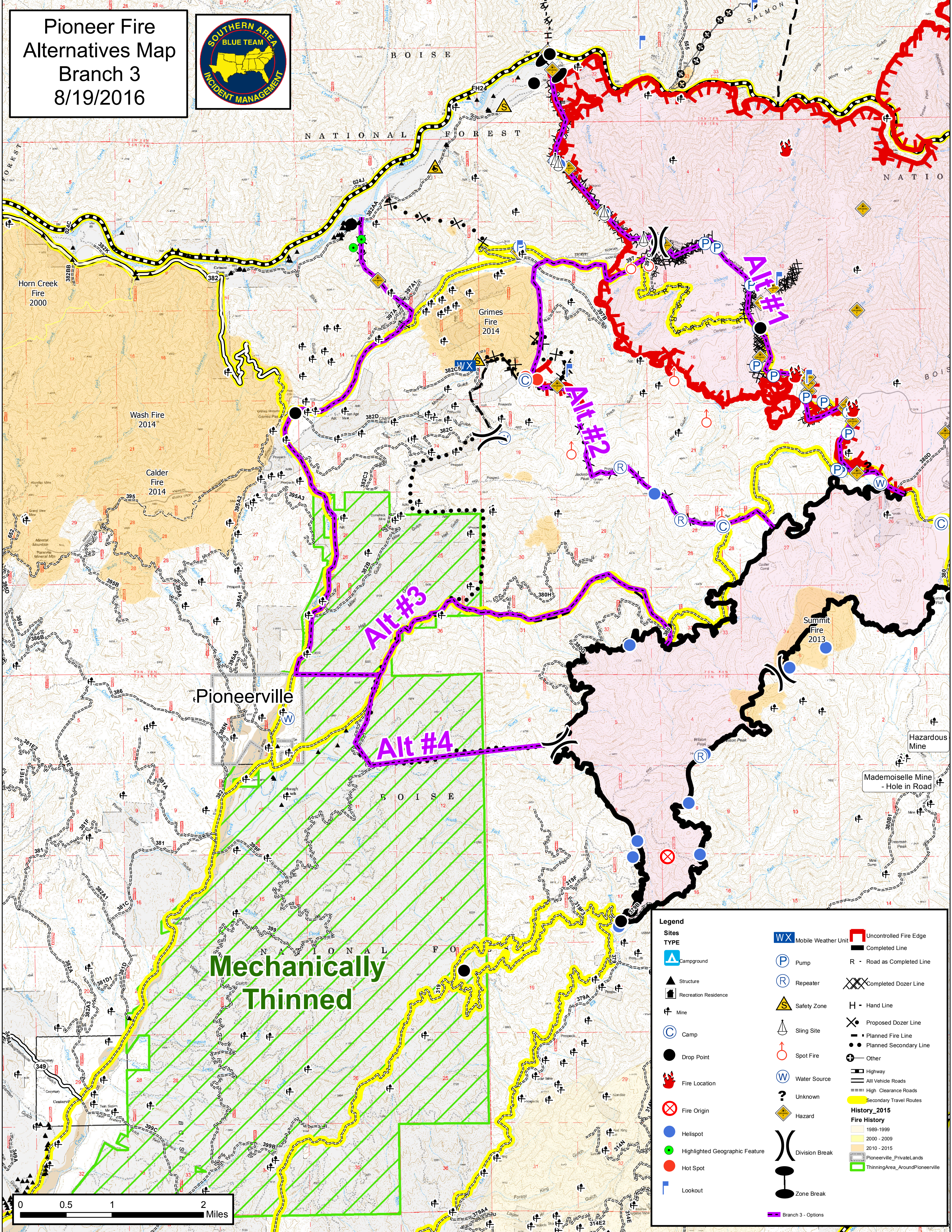


Pioneer Fire Alternatives Map

Branch 3

8/19/2016



Pioneerville

Mechanically Thinned

Alt #3

Alt #4

Alt #2

Alt #1

| Legend | |
|--------------------------------|----------------------------------|
| Sites | TYPE |
| Mobile Weather Unit | Uncontrolled Fire Edge |
| Campground | Completed Line |
| Structure | R - Road as Completed Line |
| Recreation Residence | Completed Dozer Line |
| Mine | H - Hand Line |
| Camp | Proposed Dozer Line |
| Drop Point | Planned Fire Line |
| Fire Location | Planned Secondary Line |
| Fire Origin | Other |
| Helispot | Highway |
| Highlighted Geographic Feature | All Vehicle Roads |
| Hot Spot | High Clearance Roads |
| Lookout | Secondary Travel Routes |
| | History_2015 |
| | 1989-1999 |
| | 2000-2009 |
| | 2010-2015 |
| | Pioneerville_PrivateLands |
| | ThinningArea_AroundPioneerville |
| | Division Break |
| | Zone Break |
| | Branch 3 - Options |
| | Pump |
| | Repeater |
| | Safety Zone |
| | Sling Site |
| | Spot Fire |
| | Water Source |
| | Unknown |
| | Hazard |
| | Hazardous Mine |
| | Mademoiselle Mine - Hole in Road |
| | Summit Fire 2013 |
| | Wash Fire 2014 |
| | Calder Fire 2014 |
| | Grimes Fire 2014 |
| | Horn Creek Fire 2000 |

