

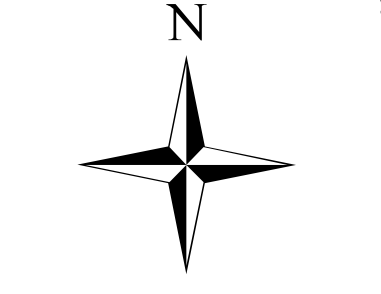
Pioneer Fire  
ID-BOF-000539  
August 19, 2016  
81,450 Acres

DIV H / DIV GG  
Page 10

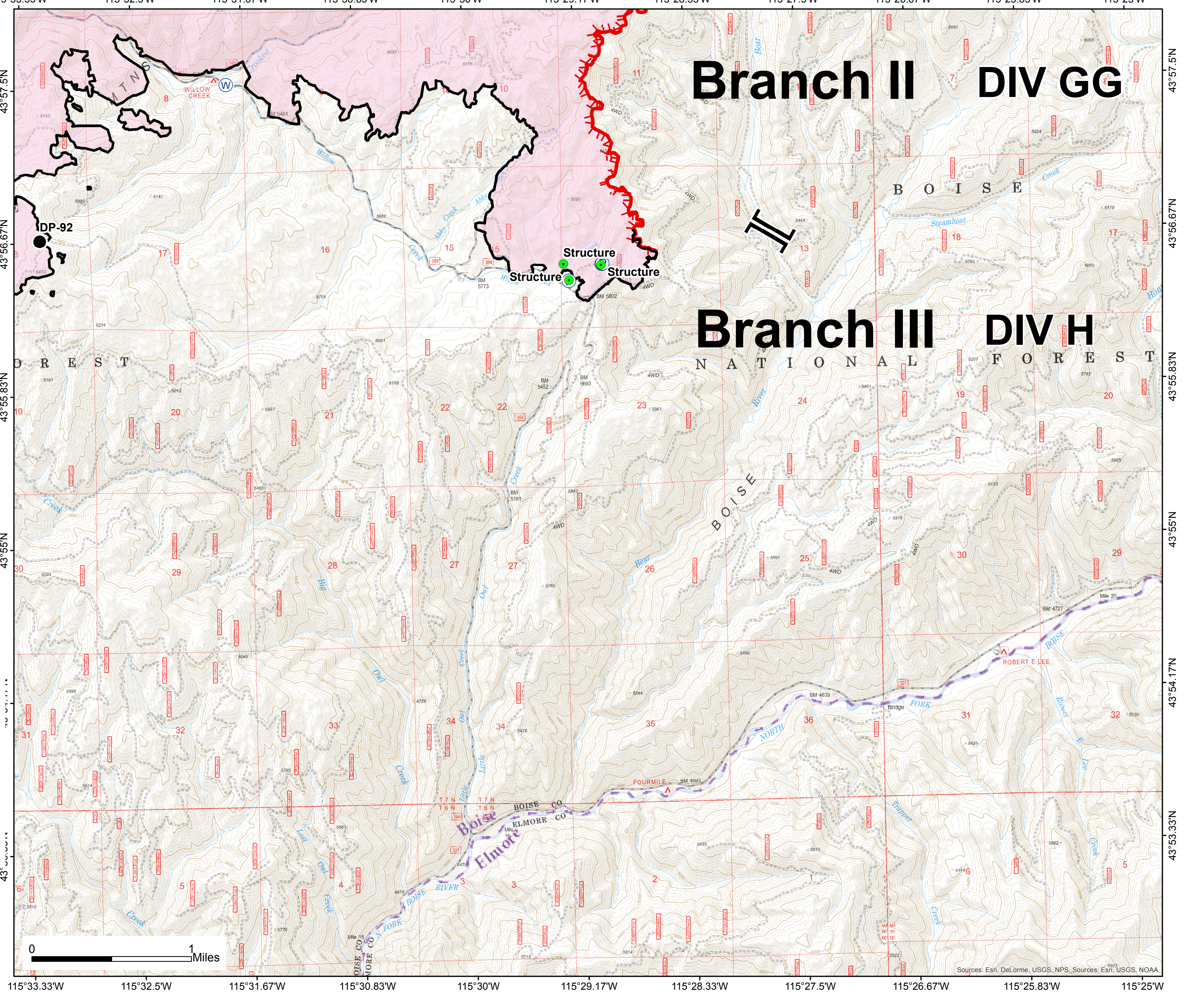


- EventPoint**  
Feature Category (Point Type)
- Drop Point
  - Highlighted Geographic Feature
  - Ⓟ Pump
  - Ⓜ Water Source
  - || Branch Break

- EventLine**  
Feature Category (Line Type)
- Uncontrolled Fire Edge
  - Completed Line
- EventPolygon**  
Feature Category (Polygon Type)
- Wildfire Daily Fire Perimeter



Southern Area Blue Team  
8/18/2016  
9:05:38 PM



# Branch II DIV GG

# Branch III DIV H

115°33.33'W 115°32.5'W 115°31.67'W 115°30.83'W 115°30'W 115°29.17'W 115°28.33'W 115°27.5'W 115°26.67'W 115°25.83'W 115°25'W

43°57.5'N 43°56.67'N 43°55.83'N 43°55'N 43°54.17'N 43°53.33'N

Sources: Esri, DeLorme, USGS, NPS, Sources: Esri, USGS, NOAA