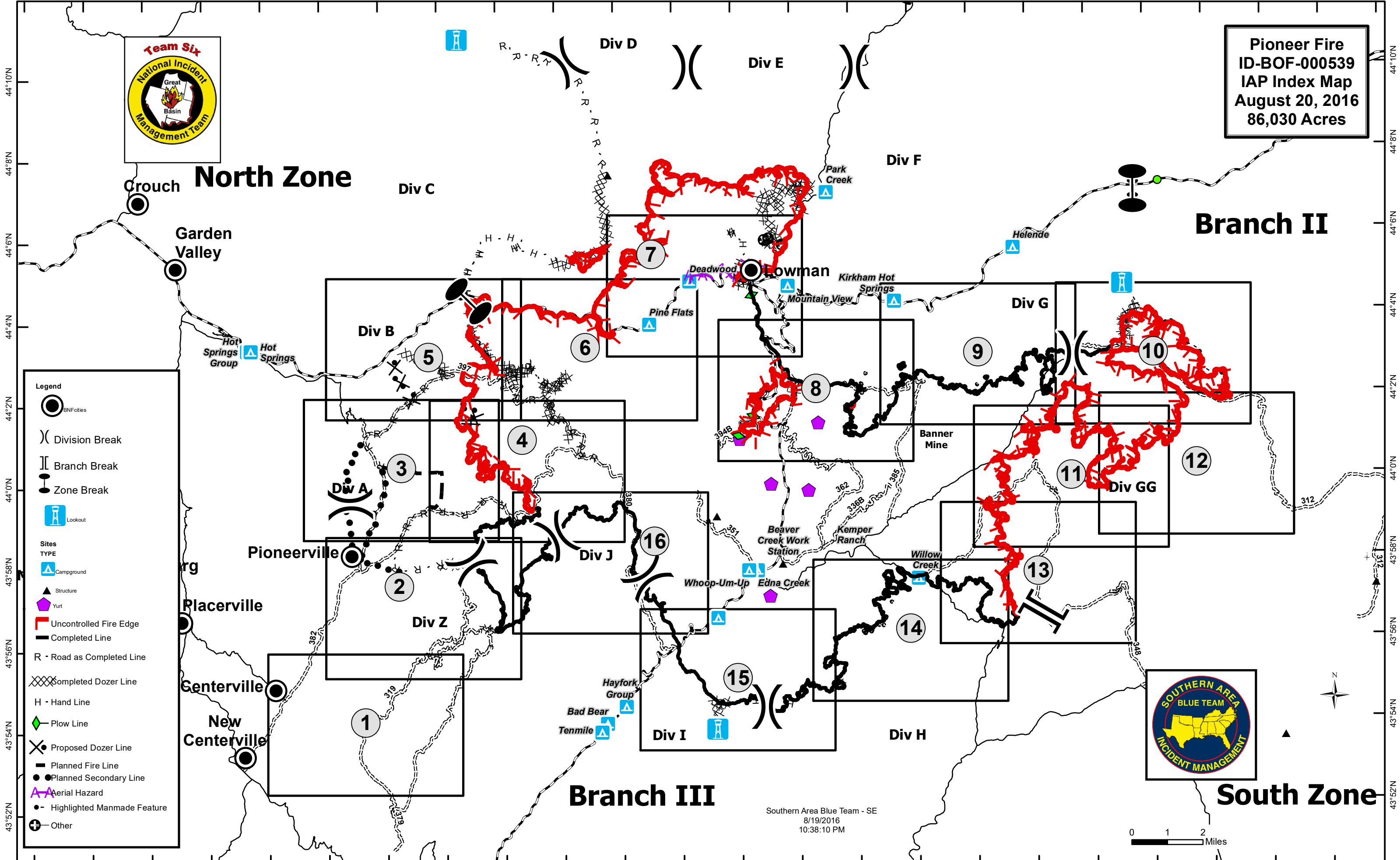


116°2'W 116°0'W 115°58'W 115°56'W 115°54'W 115°52'W 115°50'W 115°48'W 115°46'W 115°44'W 115°42'W 115°40'W 115°38'W 115°36'W 115°34'W 115°32'W 115°30'W 115°28'W 115°26'W 115°24'W 115°22'W 115°20'W 115°18'W 115°16'W



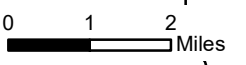
Pioneer Fire
ID-BOF-000539
IAP Index Map
August 20, 2016
86,030 Acres



Legend

- BNFolies
- Division Break
- Branch Break
- Zone Break
- Lookout
- Sites**
- TYPE**
- Campground
- Structure
- Yurt
- Uncontrolled Fire Edge
- Completed Line
- R - Road as Completed Line
- Completed Dozer Line
- H - Hand Line
- Plow Line
- Proposed Dozer Line
- Planned Fire Line
- Planned Secondary Line
- Aerial Hazard
- Highlighted Manmade Feature
- Other

Southern Area Blue Team - SE
8/19/2016
10:38:10 PM



44°10'N
44°8'N
44°6'N
44°4'N
44°2'N
44°0'N
43°58'N
43°56'N
43°54'N
43°52'N

44°10'N
44°8'N
44°6'N
44°4'N
44°2'N
44°0'N
43°58'N
43°56'N
43°54'N
43°52'N

North Zone

Branch II

Branch III

South Zone

Garden Valley

Placerville

Centerville

New Centerville

Div D

Div E

Div F

Div C

Div B

Div G

Div A

Div J

Div Z

Div I

Div H

Div GG

Deadwood

Lowman

Kirkham Hot Springs

Pine Flats

Mountain View

Banner Mine

Hot Springs Group

Whoop-Um-Up

Edna Creek

Beaver Creek Work Station

Kemper Ranch

Willow Creek

Hayfork Group

Bad Bear

Tenmile

7

6

8

9

10

3

4

16

2

15

14

13

1

12

312

312

312

312

312

312

312

312

312

312

312

312

312

312

312

312

44°10'N

44°8'N

44°6'N

44°4'N

44°2'N

44°0'N

43°58'N

43°56'N

43°54'N

43°52'N

43°50'N

43°48'N

43°46'N

43°44'N

43°42'N

43°40'N

43°38'N

43°36'N

43°34'N

43°32'N

43°30'N

43°28'N

43°26'N

43°24'N

43°22'N

43°20'N

43°18'N

43°16'N

43°14'N

43°12'N

116°2'W
116°0'W
115°58'W
115°56'W
115°54'W
115°52'W
115°50'W
115°48'W
115°46'W
115°44'W
115°42'W
115°40'W
115°38'W
115°36'W
115°34'W
115°32'W
115°30'W
115°28'W
115°26'W
115°24'W
115°22'W
115°20'W
115°18'W
115°16'W

116°2'W 116°0'W 115°58'W 115°56'W 115°54'W 115°52'W 115°50'W 115°48'W 115°46'W 115°44'W 115°42'W 115°40'W 115°38'W 115°36'W 115°34'W 115°32'W 115°30'W 115°28'W 115°26'W 115°24'W 115°22'W 115°20'W 115°18'W 115°16'W