



**Pioneer Fire**  
**ID-BOF-000539**  
**Air Ops Map**  
**August 20, 2016**  
**86,030 Acres**

**Pioneer Fire ID-BOF-000539**

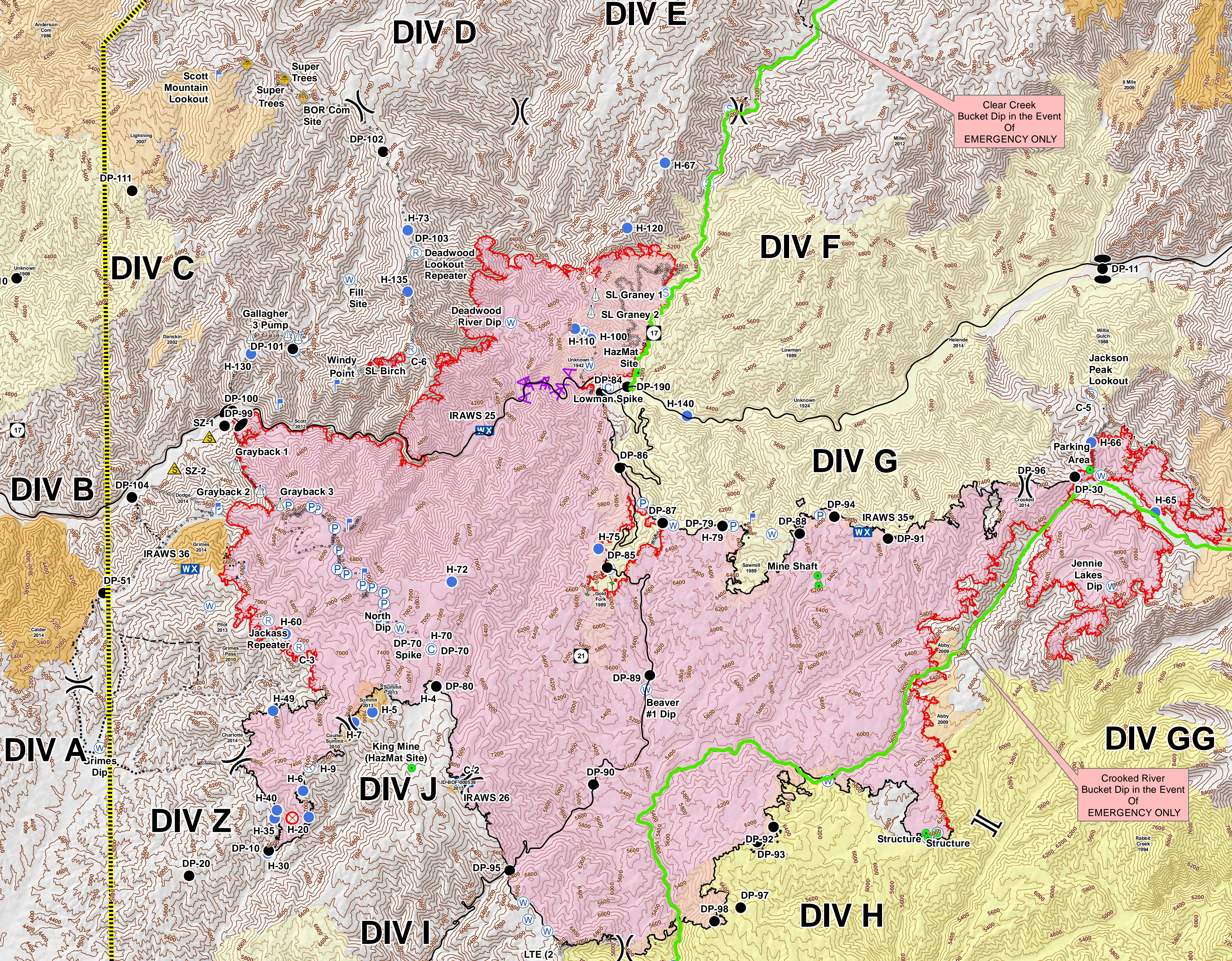
Fire Points	Lat	Long
<b>Helispots</b>		
H-4	43° 59.409'	-115° 41.884'
H-5	43° 58.945'	-115° 43.549'
H-6	43° 57.490'	-115° 45.379'
H-7	43° 58.76'	-115° 44.029'
H-9	43° 57.952'	-115° 45.157'
H-20	43° 57.002'	-115° 45.243'
H-30	43° 56.331'	-115° 46.320'
H-35	43° 56.985'	-115° 46.123'
H-40	43° 57.138'	-115° 46.060'
H-49	43° 58.996'	-115° 46.123'
H-60	44° 00.430'	-115° 45.770'
H-65	44° 02.42'	-115° 23.17'
H-66	44° 03.76'	-115° 24.80'
H-67	44° 09.131'	-115° 35.725'
H-68	44° 06.055'	-115° 38.141'
H-69	44° 05.855'	-115° 37.727'
H-70	44° 00.125'	-115° 42.017'
H-72	44° 01.36'	-115° 41.441'
H-73	44° 07.947'	-115° 42.440'
H-75	44° 1.93'	-115° 37.623'
H-79	44° 2.337'	-115° 34.380'
H-100	44° 5.855'	-115° 37.727'
H-110	44° 6.055'	-115° 38.141'
H-120	44° 7.922'	-115° 36.737'
H-130	44° 5.681'	-115° 46.558'
H-135	44° 6.798'	-115° 42.467'
H-140	44° 4.388'	-115° 35.267'
<b>Fire Points</b>		
<b>Sling Sites</b>		
Alpha Sling	43° 56.979'	-115° 45.991'
Delta Sling	43° 57.788'	-115° 45.883'
Delta Sling 2	43° 57.507'	-115° 46.335'
Delta Sling 3	43° 57.739'	-115° 46.640'
Delta Sling 4	43° 58.473'	-115 46.738'
Delta Sling 5	43° 59.057'	-115 45.847'
Delta Sling 6	43° 58.996'	-115 46.123'
Delta Sling 7	43° 58.045'	-115 47.087'
Grayback 1 Sling	44° 03.605'	-115 47.015'
Grayback 2 Sling	44° 03.102'	-115 46.377'
Grayback 3 Sling	44° 02.849'	-115 45.863'
Kilo Sling	43° 58.225'	-115° 44.565'
Zulu Sling	43° 57.001'	-115° 45.250'
Sling 1	43° 56.813'	-115° 45.968'
Sling 2	43° 57.873'	-115° 45.204'
Sling 3	43° 56.847'	-115° 44.829'
Sling 4	43° 57.154'	-115° 45.183'
Sling 5	43° 57.311'	-115° 45.169'
SL Graney 1	44° 6.686'	-115° 37.593'
SL Graney 2	44° 6.369'	-115° 37.715'
<b>Fire Points</b>		
<b>Dip Sites</b>		
Beaver Dip #1	43° 59.282'	-115° 36.444'
Deadwood River Dip	44° 06.181'	-115° 39.805'
Grimes Dip	43° 58.350'	-115° 50.629'
H-Dip	43° 54.100'	-115° 35.870'
Jennie Lakes Dip	44° 1.06'	-115° 24.34'
North Dip	44° 00.500'	-115° 42.801'
Summit Flat Dip	43° 59.140'	-115° 42.160'
Sunset Dip	43° 55.016'	-115° 39.606'
<b>Fire Points</b>		
<b>Repeaters and Camps</b>		
CMD 1	43° 57.952'	-115° 45.157'
CMD 2	43° 57.603'	-115° 41.212'
CMD 4	43° 53.910'	-115° 38.805'
Camp	43° 57.935'	-115° 45.109'
Coulter Spike	44° 00.154'	-115° 44.933'
Lowman Spike	44° 02.96'	-115° 37.306'
Banner Mine	44° 1.679'	-115° 30.898'
Retardant Base	43° 53.306'	-115° 54.306'

**North Zone**

**South Zone**

**Branch II**

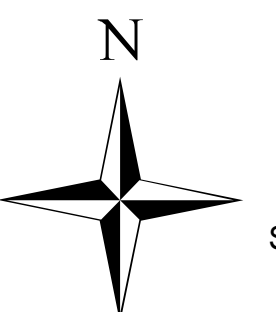
**Branch III**



Clear Creek  
 Bucket Dip in the Event  
 Of  
 EMERGENCY ONLY

Crooked River  
 Bucket Dip in the Event  
 Of  
 EMERGENCY ONLY

0 2 4 Nautical Miles



Southern Area Blue Team  
 8/19/2016  
 8:58:54 PM

