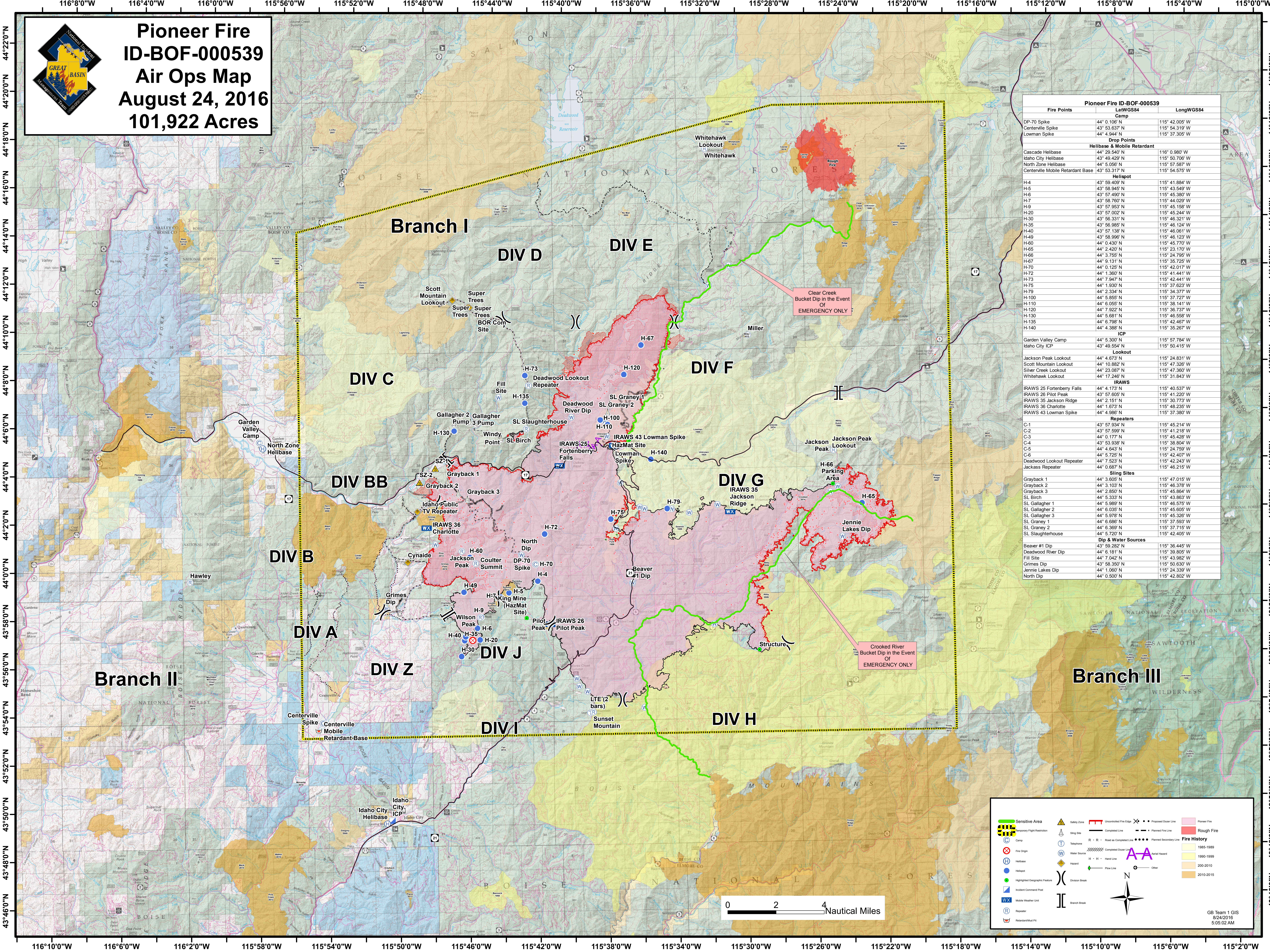




Pioneer Fire
ID-BOF-000539
Air Ops Map
August 24, 2016
101,922 Acres



Pioneer Fire ID-BOF-000539		
Fire Points	LatWGS84	LongWGS84
Camp		
DP-70 Spike	44° 0.106' N	115° 42.005' W
Centerville Spike	43° 53.633' N	115° 54.319' W
Lowman Spike	44° 4.944' N	115° 37.305' W
Drop Points		
Helibase & Mobile Retardant		
Cascade Helibase	44° 29.540' N	116° 0.980' W
Idaho City Helibase	43° 49.429' N	115° 50.705' W
North Zone Helibase	44° 5.056' N	115° 57.587' W
Centerville Mobile Retardant Base	43° 53.317' N	115° 54.575' W
Helispot		
H-4	43° 59.409' N	115° 41.884' W
H-5	43° 58.945' N	115° 43.549' W
H-6	43° 57.490' N	115° 45.380' W
H-7	43° 58.760' N	115° 44.022' W
H-9	43° 57.953' N	115° 45.158' W
H-20	43° 57.002' N	115° 45.244' W
H-30	43° 56.331' N	115° 46.321' W
H-35	43° 56.985' N	115° 46.124' W
H-40	43° 57.138' N	115° 46.061' W
H-49	43° 58.995' N	115° 46.123' W
H-60	44° 0.430' N	115° 45.770' W
H-65	44° 2.420' N	115° 23.170' W
H-66	44° 3.755' N	115° 24.795' W
H-67	44° 9.131' N	115° 35.725' W
H-70	44° 0.125' N	115° 42.017' W
H-72	44° 1.360' N	115° 41.441' W
H-73	44° 7.947' N	115° 42.441' W
H-75	44° 1.930' N	115° 37.623' W
H-79	44° 2.334' N	115° 34.377' W
H-100	44° 5.855' N	115° 37.727' W
H-110	44° 6.055' N	115° 38.141' W
H-120	44° 7.922' N	115° 36.737' W
H-130	44° 5.681' N	115° 46.558' W
H-135	44° 6.798' N	115° 42.467' W
H-140	44° 4.388' N	115° 35.267' W
ICP		
Garden Valley Camp	44° 5.300' N	115° 57.784' W
Idaho City ICP	43° 49.554' N	115° 50.415' W
Lookout		
Jackson Peak Lookout	44° 4.673' N	115° 24.831' W
Scott Mountain Lookout	44° 10.882' N	115° 47.326' W
Silver Creek Lookout	44° 23.087' N	115° 47.360' W
Whitehawk Lookout	44° 17.246' N	115° 31.843' W
IRAWS		
IRAWS 25 Fortenberry Falls	44° 4.173' N	115° 40.537' W
IRAWS 26 Pilot Peak	43° 57.605' N	115° 41.220' W
IRAWS 35 Jackson Ridge	44° 2.151' N	115° 30.773' W
IRAWS 36 Charlotte	44° 1.673' N	115° 48.235' W
IRAWS 43 Lowman Spike	44° 4.986' N	115° 37.380' W
Repeaters		
C-1	43° 57.934' N	115° 45.214' W
C-2	43° 57.599' N	115° 41.218' W
C-3	44° 0.177' N	115° 45.428' W
C-4	43° 53.938' N	115° 38.804' W
C-5	44° 4.643' N	115° 24.759' W
C-6	44° 5.725' N	115° 42.407' W
Deadwood Lookout Repeater	44° 7.523' N	115° 42.243' W
Jacksass Repeater	44° 0.687' N	115° 46.215' W
Sling Sites		
Grayback 1	44° 3.605' N	115° 47.015' W
Grayback 2	44° 3.103' N	115° 46.378' W
Grayback 3	44° 2.850' N	115° 45.864' W
SL Birch	44° 5.333' N	115° 43.853' W
SL Gallagher 1	44° 5.989' N	115° 46.575' W
SL Gallagher 2	44° 6.035' N	115° 45.605' W
SL Gallagher 3	44° 5.978' N	115° 45.326' W
SL Graney 1	44° 6.686' N	115° 37.593' W
SL Graney 2	44° 6.369' N	115° 37.715' W
SL Slaughterhouse	44° 5.720' N	115° 42.408' W
Dip & Water Sources		
Beaver #1 Dip	43° 59.282' N	115° 36.445' W
Deadwood River Dip	44° 6.181' N	115° 39.805' W
Fill Site	44° 7.042' N	115° 43.982' W
Grimes Dip	43° 58.350' N	115° 50.630' W
Jennie Lakes Dip	44° 1.860' N	115° 24.338' W
North Dip	44° 0.500' N	115° 42.802' W

0 2 4 Nautical Miles

GB Team 1 GIS
8/24/2016
5:05:02 AM