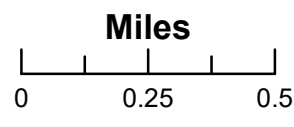
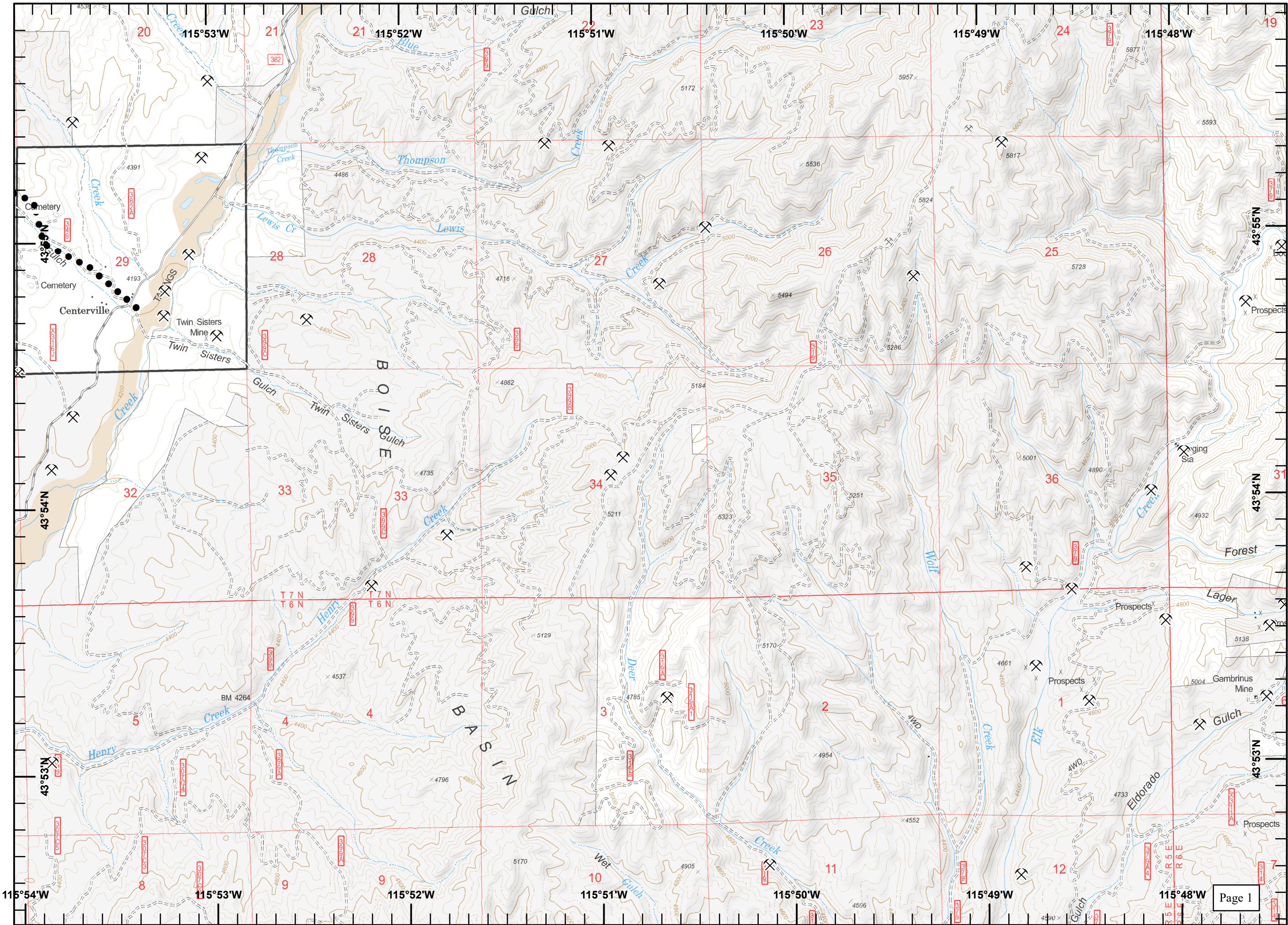


Pioneer Fire
ID-BOF-000539
8/24/16

Legend

- Mine
- Planned Secondary Line

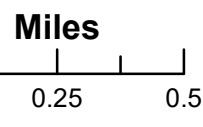
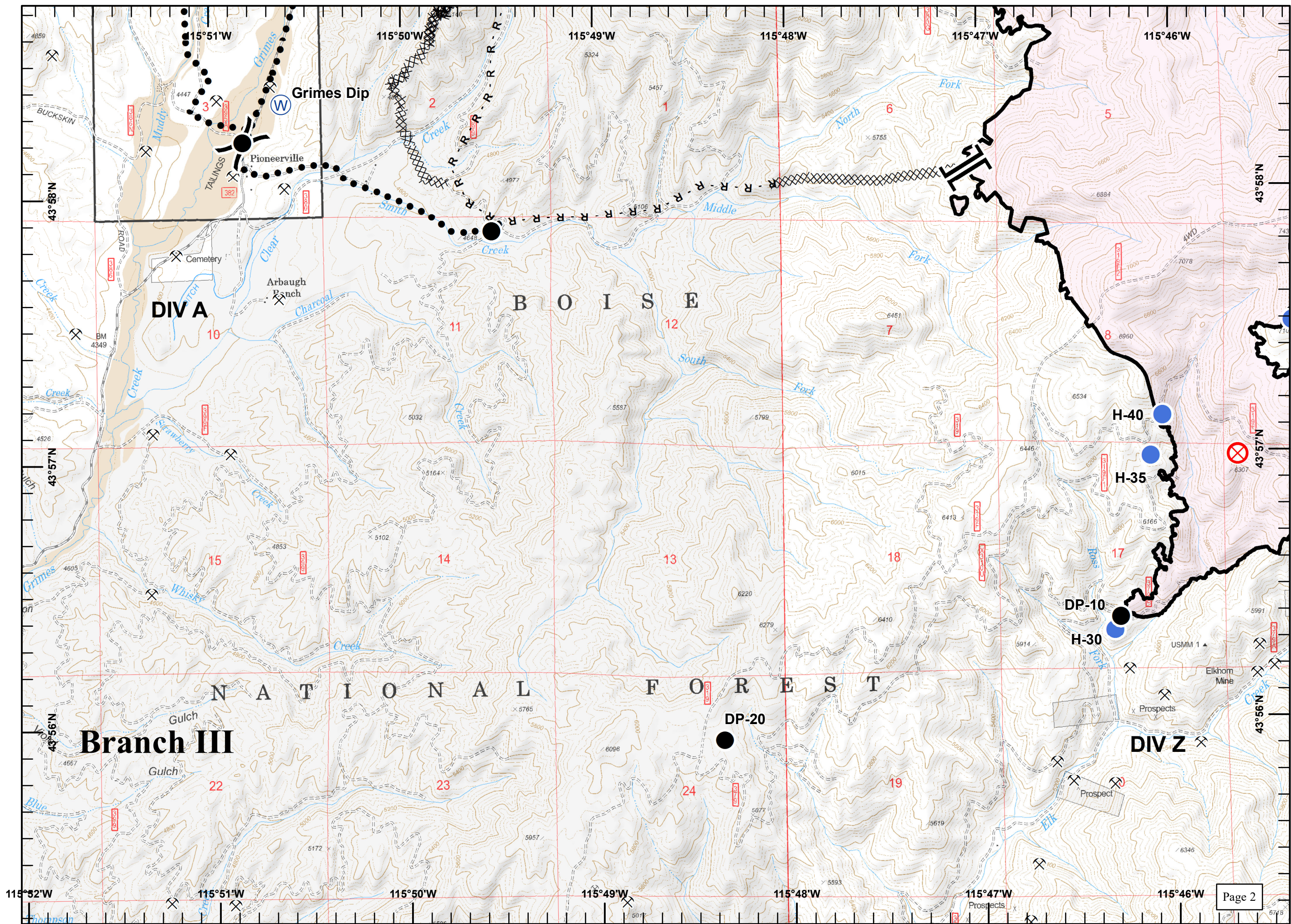


Great Basin
August 24, 2016
2151

Pioneer Fire
ID-BOF-000539
8/24/16

Legend

- Drop Point
- ⊗ Fire Origin
- Helispot
- Ⓜ Water Source
- ⌘ Division Break
- ⌘ Branch Break
- ⌘ Mine
- Completed Line
- R - Road as Completed Line
- ⊗⊗⊗ Completed Dozer Line
- Planned Secondary Line

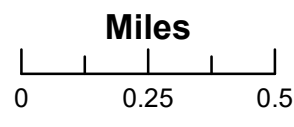


Great Basin
 August 24, 2016
 2152

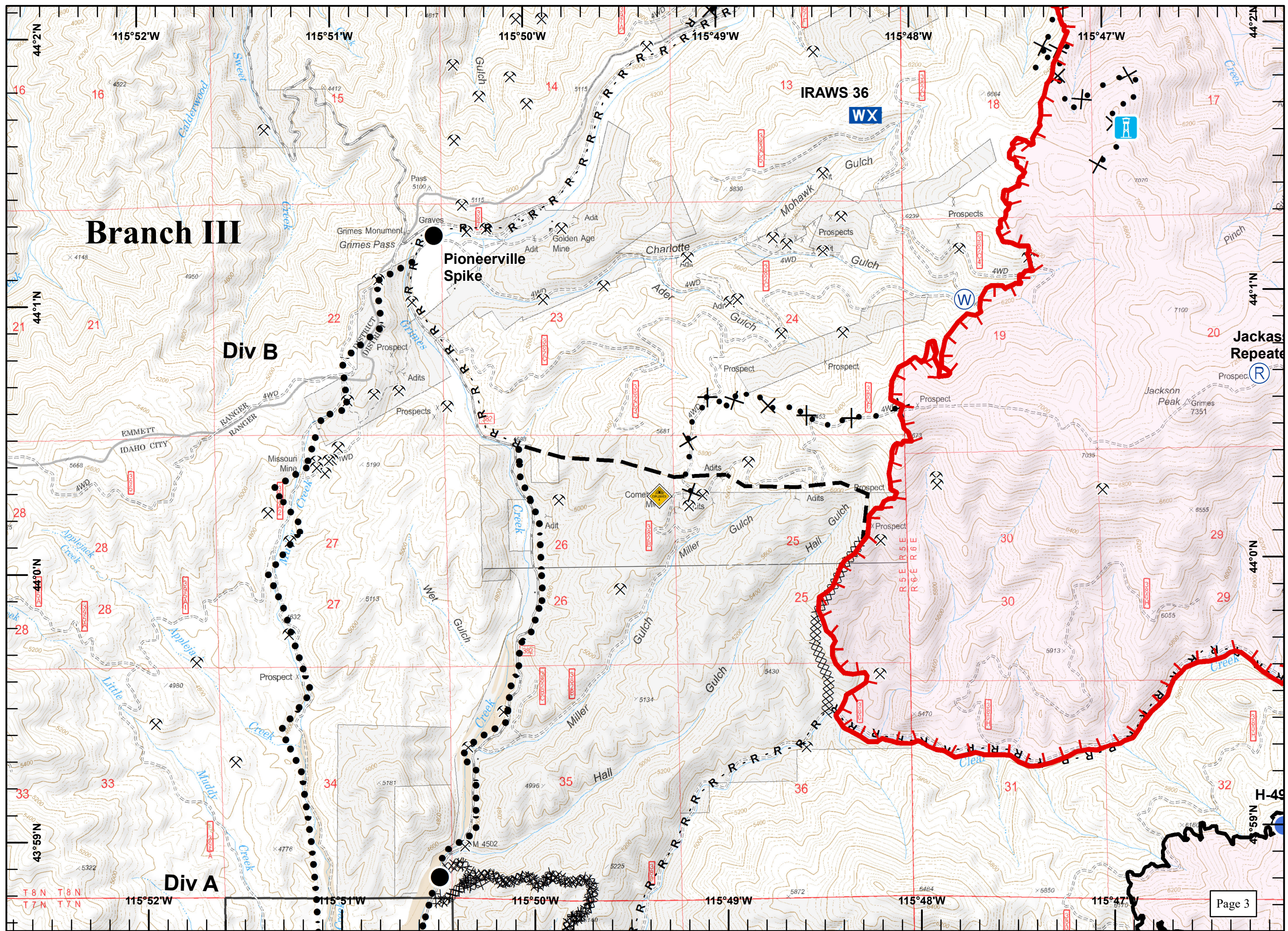
Pioneer Fire
ID-BOF-000539
8/24/16

Legend

- Drop Point
- Helispot
- ▬ Lookout
- WX** Mobile Weather Unit
- Ⓡ Repeater
- Ⓜ Water Source
- ⚠ Hazard
- ⓧ Mine
- ▬ Uncontrolled Fire Edge
- ▬ Completed Line
- R - Road as Completed Line
- ▬ Completed Dozer Line
- ▬ Proposed Dozer Line
- ▬ Planned Fire Line
- Planned Secondary Line



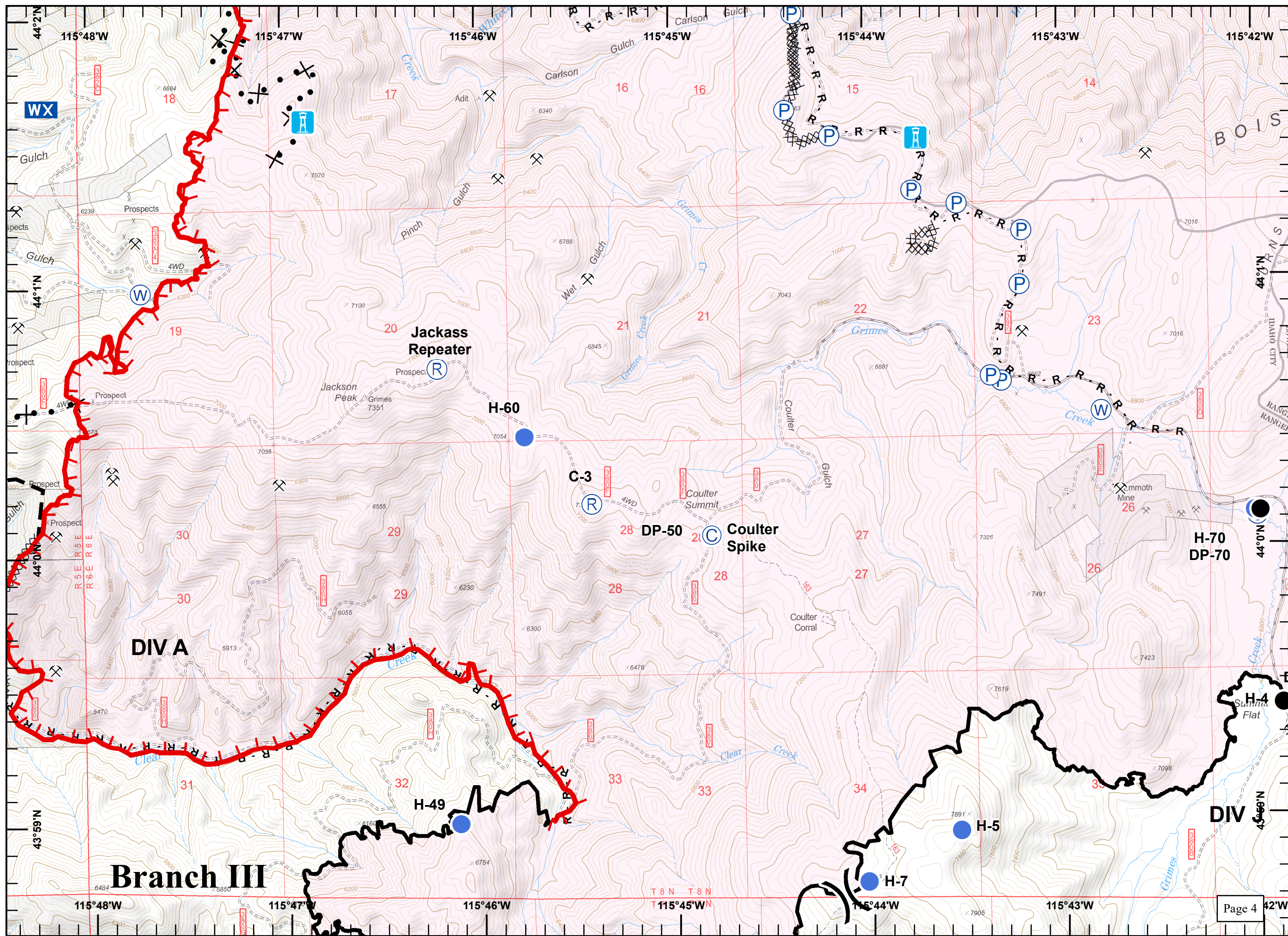
Great Basin
 August 24, 2016
 2154



Pioneer Fire
ID-BOF-000539
8/24/16

Legend

- Camp
- Drop Point
- Helispot
- Lookout
- Mobile Weather Unit
- Pump
- Repeater
- Water Source
- Division Break
- Mine
- Uncontrolled Fire Edge
- Completed Line
- R - Road as Completed Line
- Completed Dozer Line
- H - Hand Line
- Proposed Dozer Line
- Planned Fire Line



N

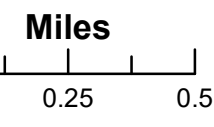
Miles
 0 0.25 0.5

Great Basin
 August 24, 2016
 2157

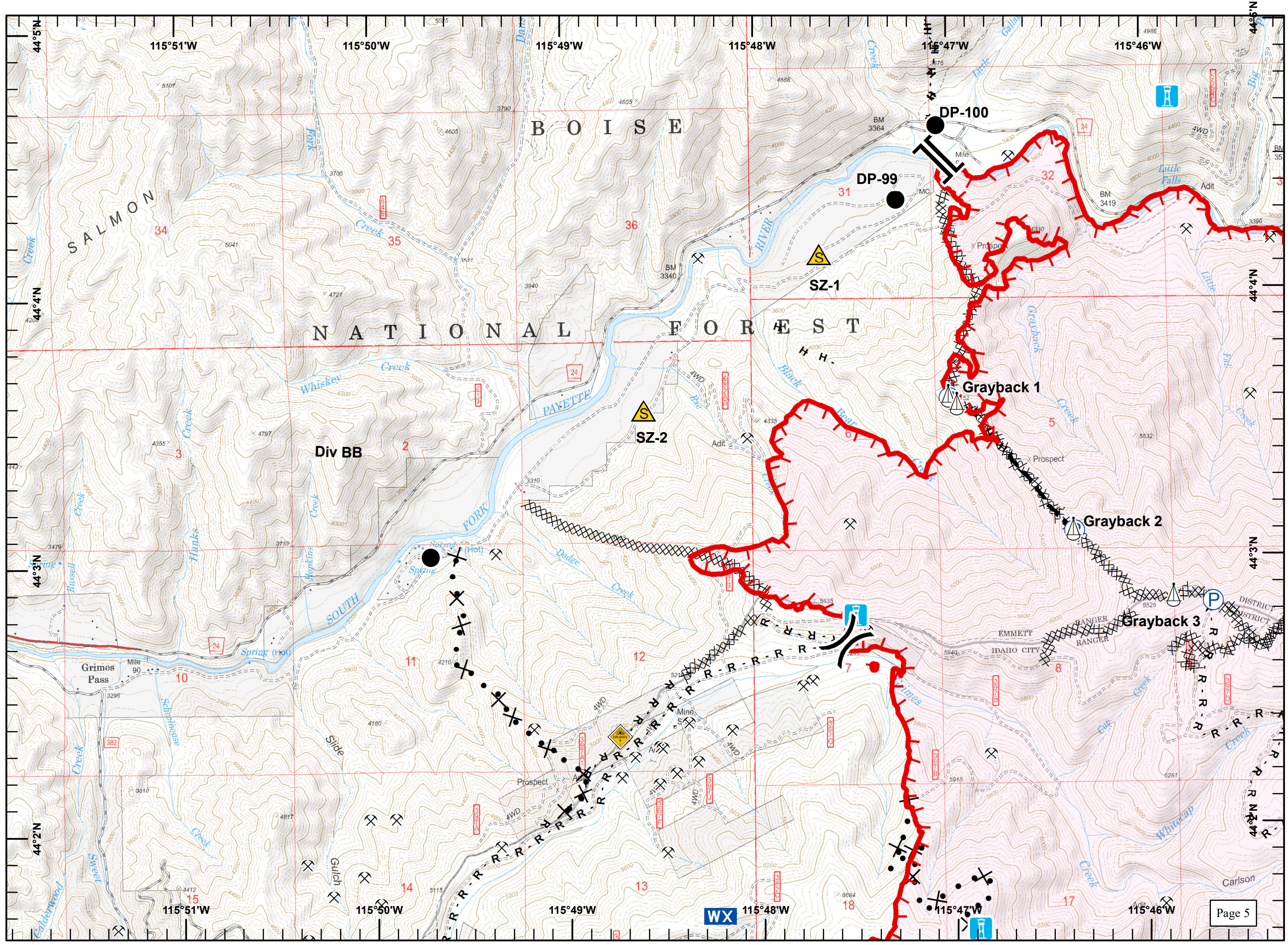
Pioneer Fire
ID-BOF-000539
8/24/16

Legend

- Drop Point
- 🏠 Lookout
- WX Mobile Weather Unit
- P Pump
- ⚠ Safety Zone
- 🪂 Sling Site
- ⚡ Hazard
-) Division Break
- || Branch Break
- ⛏ Mine
- 🔴 Uncontrolled Fire Edge
- R - Road as Completed Line
- XXXX Completed Dozer Line
- H - Hand Line
- ⊗ Proposed Dozer Line
- ▬ Planned Fire Line




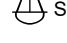

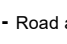
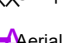






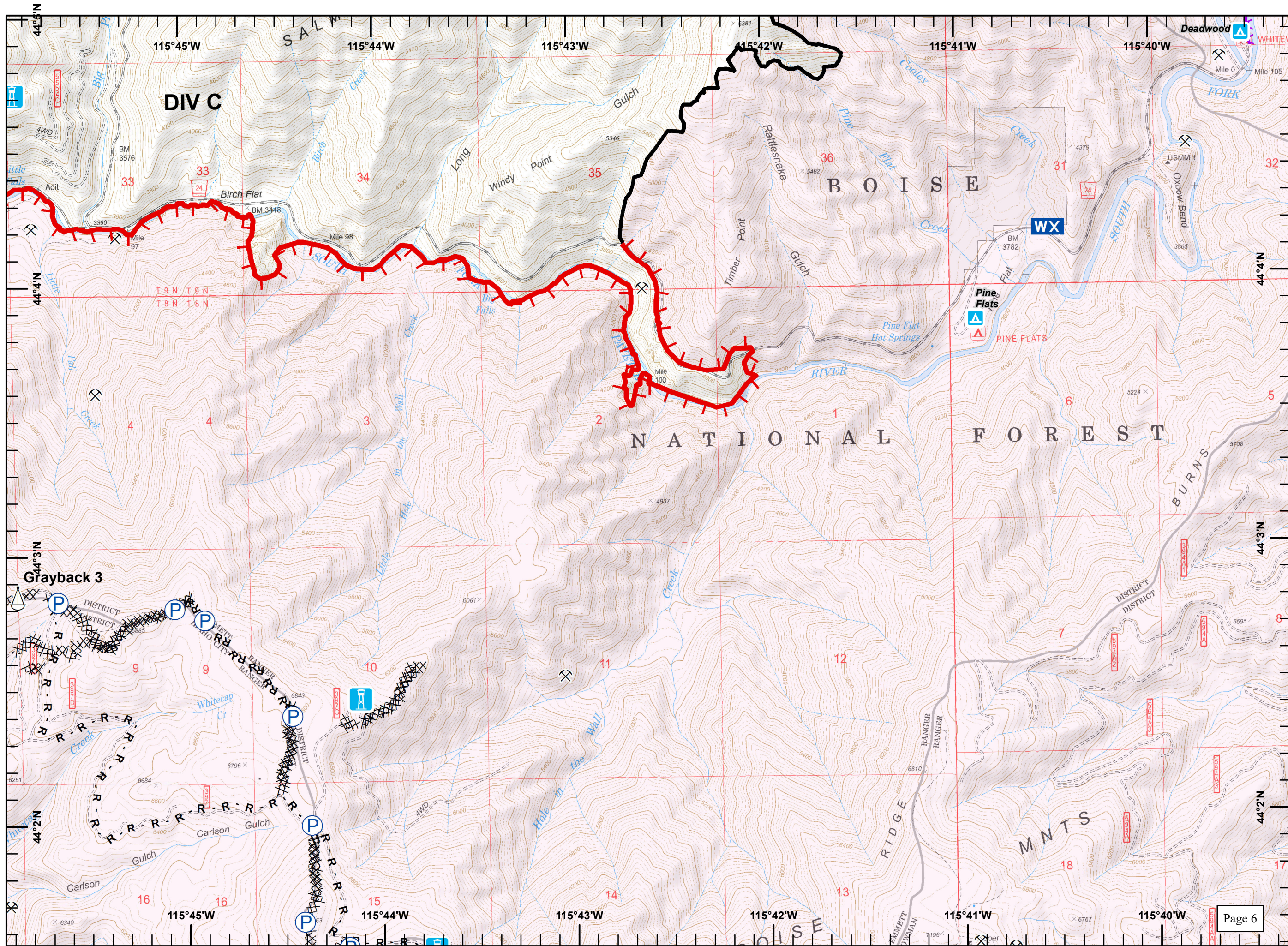
Great Basin
 August 24, 2016
 2200



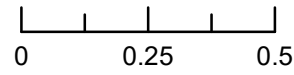
Pioneer Fire
ID-BOF-000539
8/24/16

Legend

-  Lookout
-  Mobile Weather Unit
-  Pump
-  Sling Site
-  Mine
-  Uncontrolled Fire Edge
-  Completed Line
-  R - Road as Completed Line
-  Completed Dozer Line
-  Aerial Hazard Sites
-  Campground












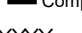




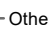

Miles

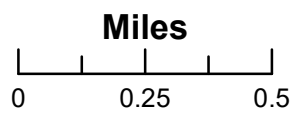
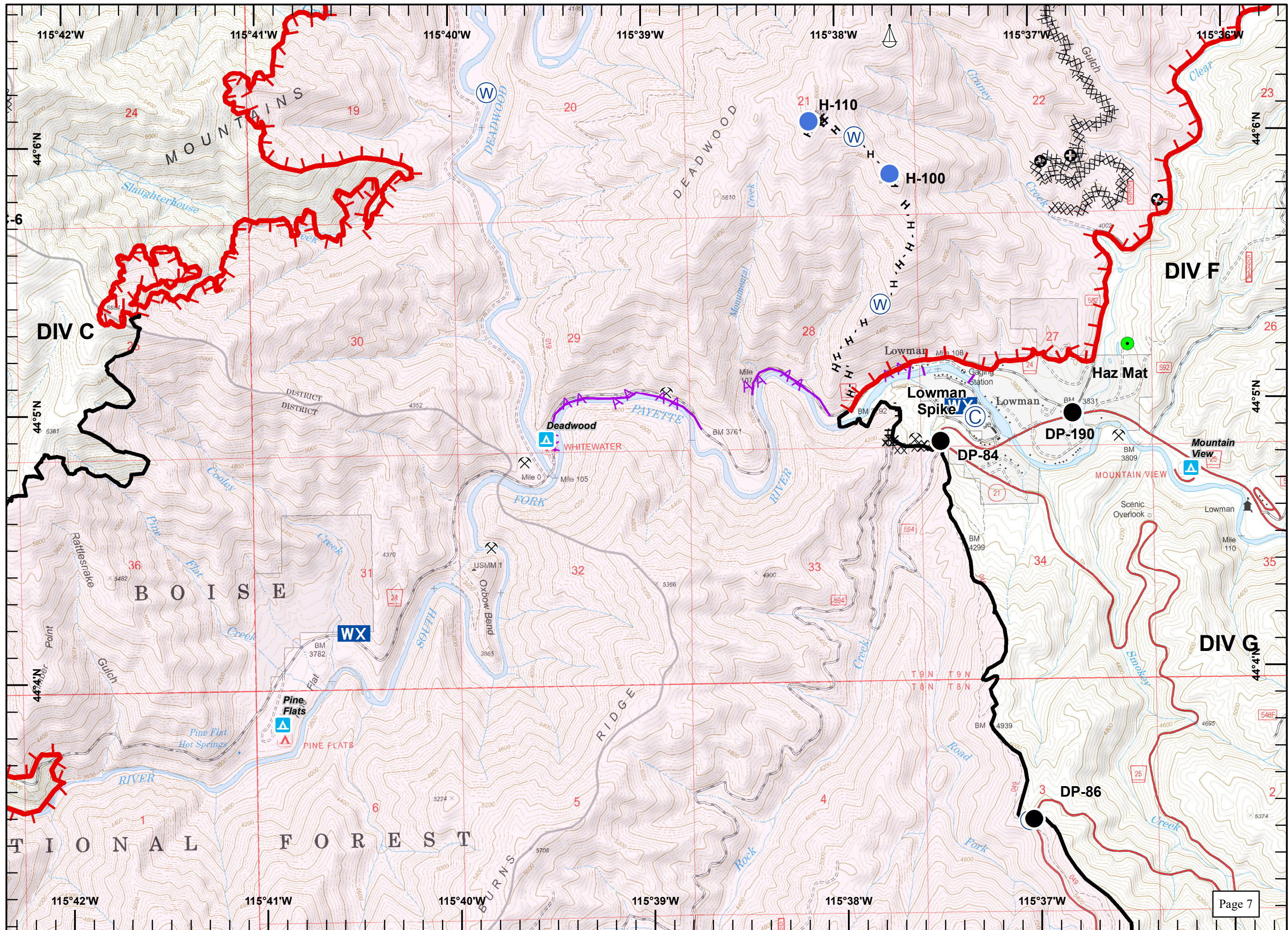


Great Basin
 August 24, 2016
 2202

Pioneer Fire
ID-BOF-000539
8/24/16

Legend

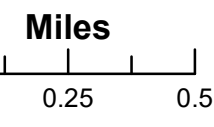
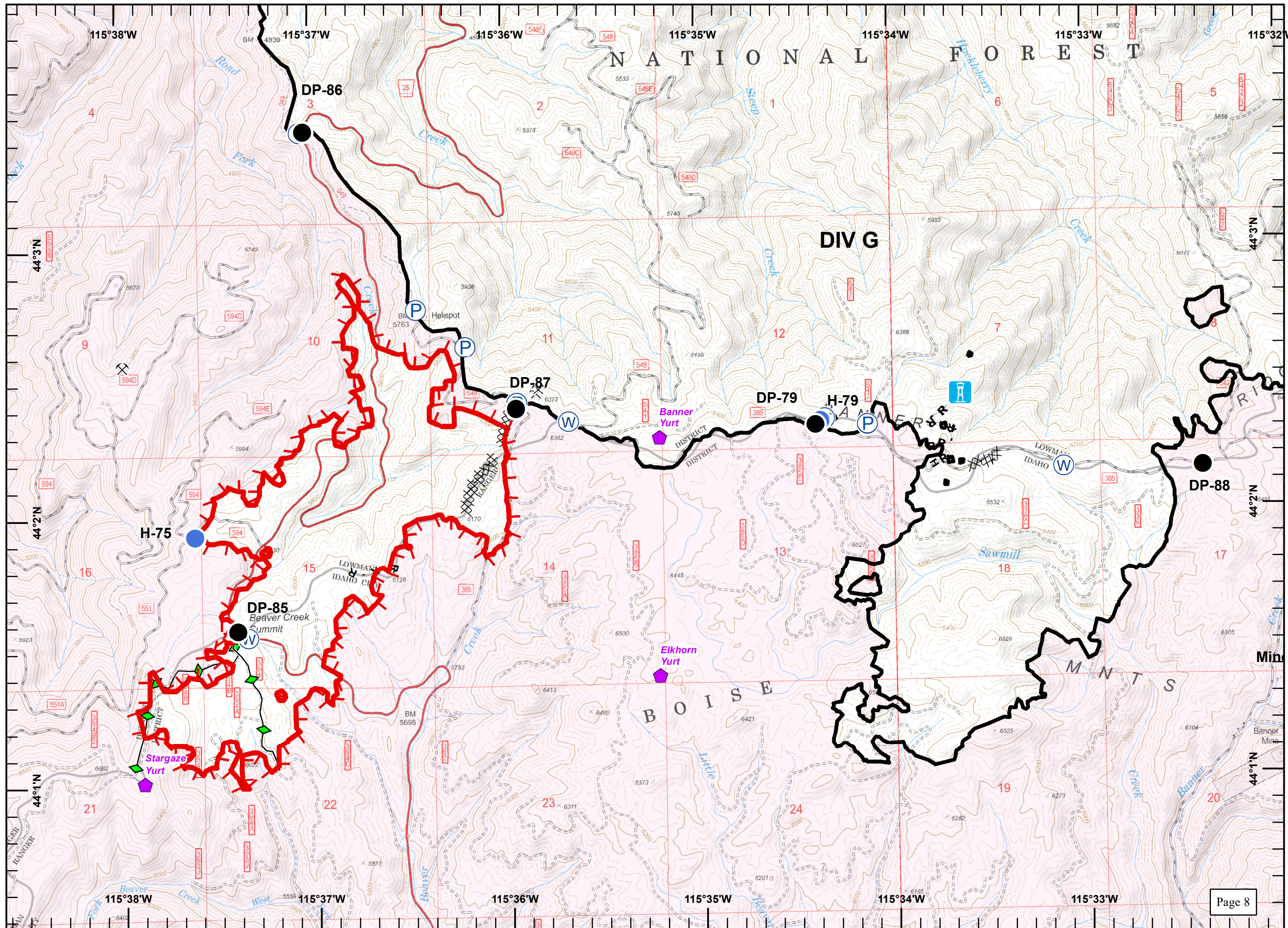
-  Camp
-  Drop Point
-  Helispot
-  Highlighted Feature
-  Mobile Weather Unit
-  Sling Site
-  Water Source
-  Mine
-  Uncontrolled Fire Edge
-  Completed Line
-  Completed Dozer Line
-  H - Hand Line
-  Plow Line
-  Aerial Hazard
-  Other
- Sites**
-  Campground



Pioneer Fire
ID-BOF-000539
8/24/16

Legend

- Drop Point
- Helispot
- ▬ Lookout
- (P) Pump
- (W) Water Source
- ◆ Yurt
- ⛏ Mine
- ▬ Uncontrolled Fire Edge
- ▬ Completed Line
- R - Road as Completed Line
- ▬ Completed Dozer Line
- H - Hand Line
- ◆ Plow Line

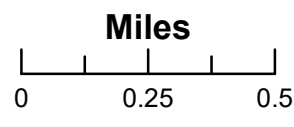
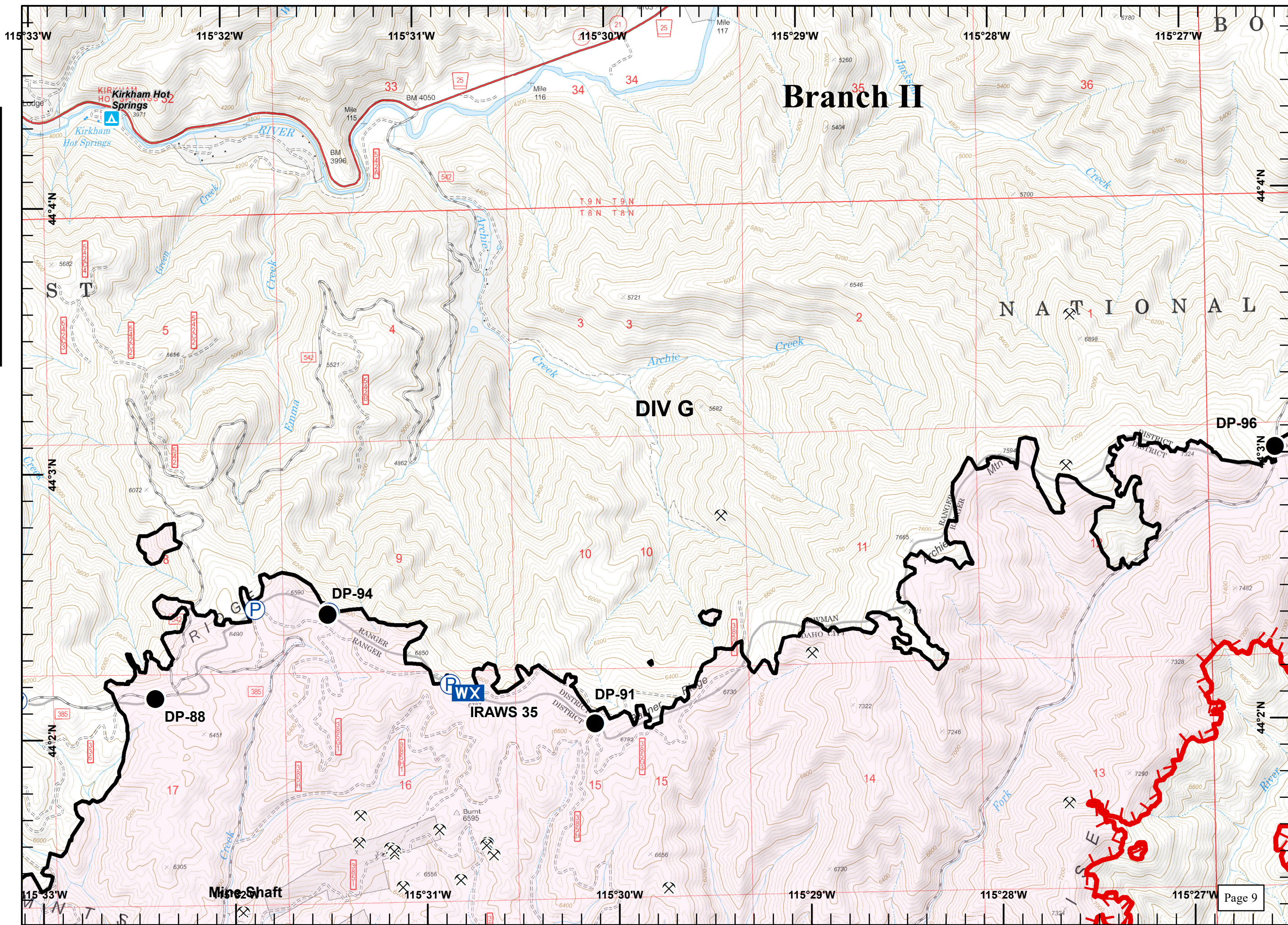


Great Basin
 August 24, 2016
 2205

Pioneer Fire
ID-BOF-000539
8/24/16

Legend

- Drop Point
- WX Mobile Weather Unit
- P Pump
- W Water Source
- Mine
- Uncontrolled Fire Edge
- Completed Line
- Sites**
- ▲ Campground



Great Basin
August 24, 2016
2207

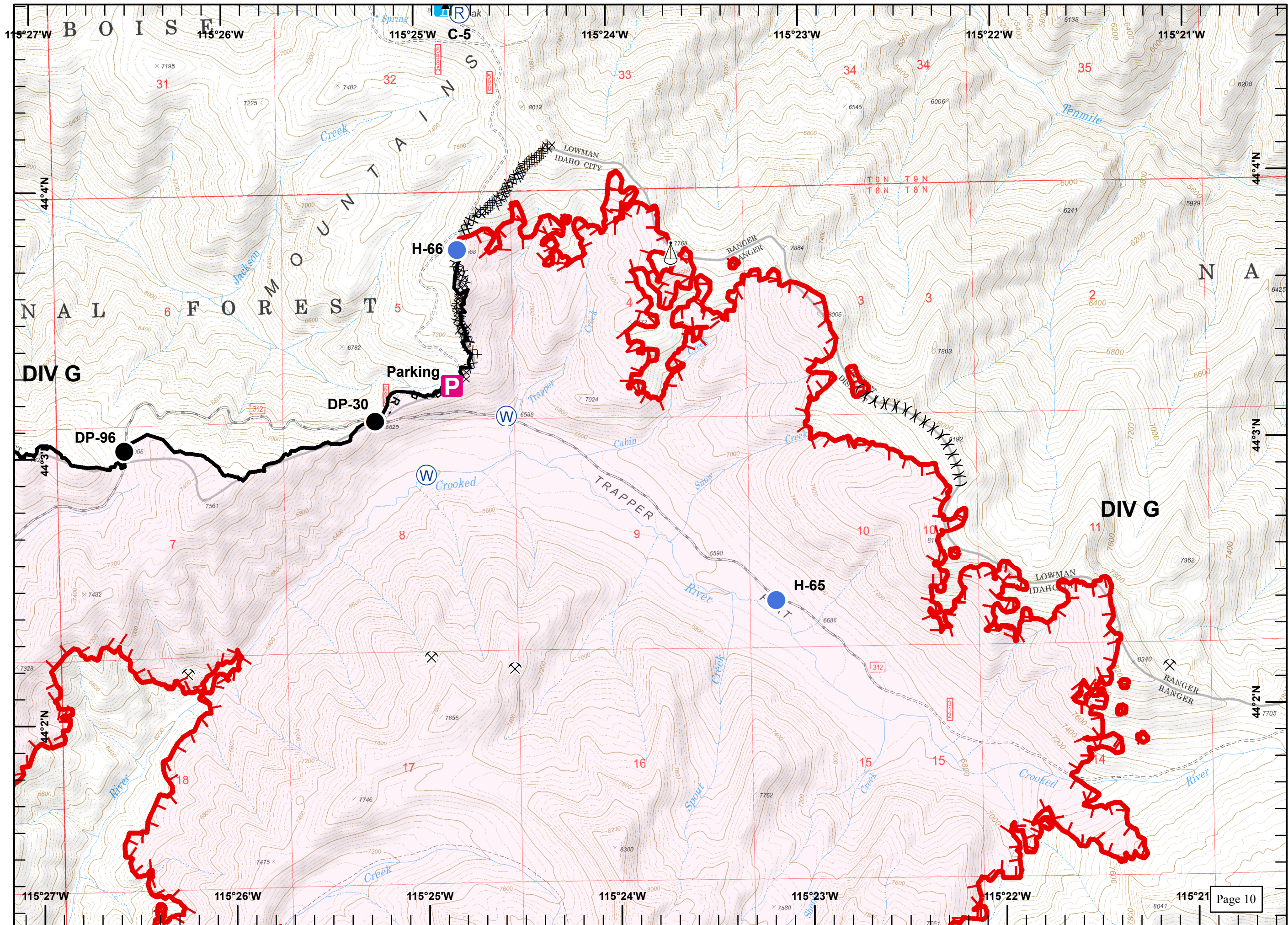
Pioneer Fire
ID-BOF-000539
8/24/16

Legend

- Drop Point
- Helispot
- Highlighted Feature
- ▬ Lookout
- Ⓟ Pump
- Ⓡ Repeater
- ⚓ Sling Site
- Ⓜ Water Source
- ⚡ Mine
- ▬ Uncontrolled Fire Edge
- ▬ Completed Line
- R - Road as Completed Line
- ▬ Completed Dozer Line

Sites

- ▲ Structure






Miles

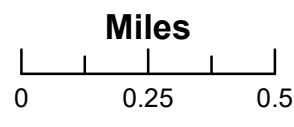
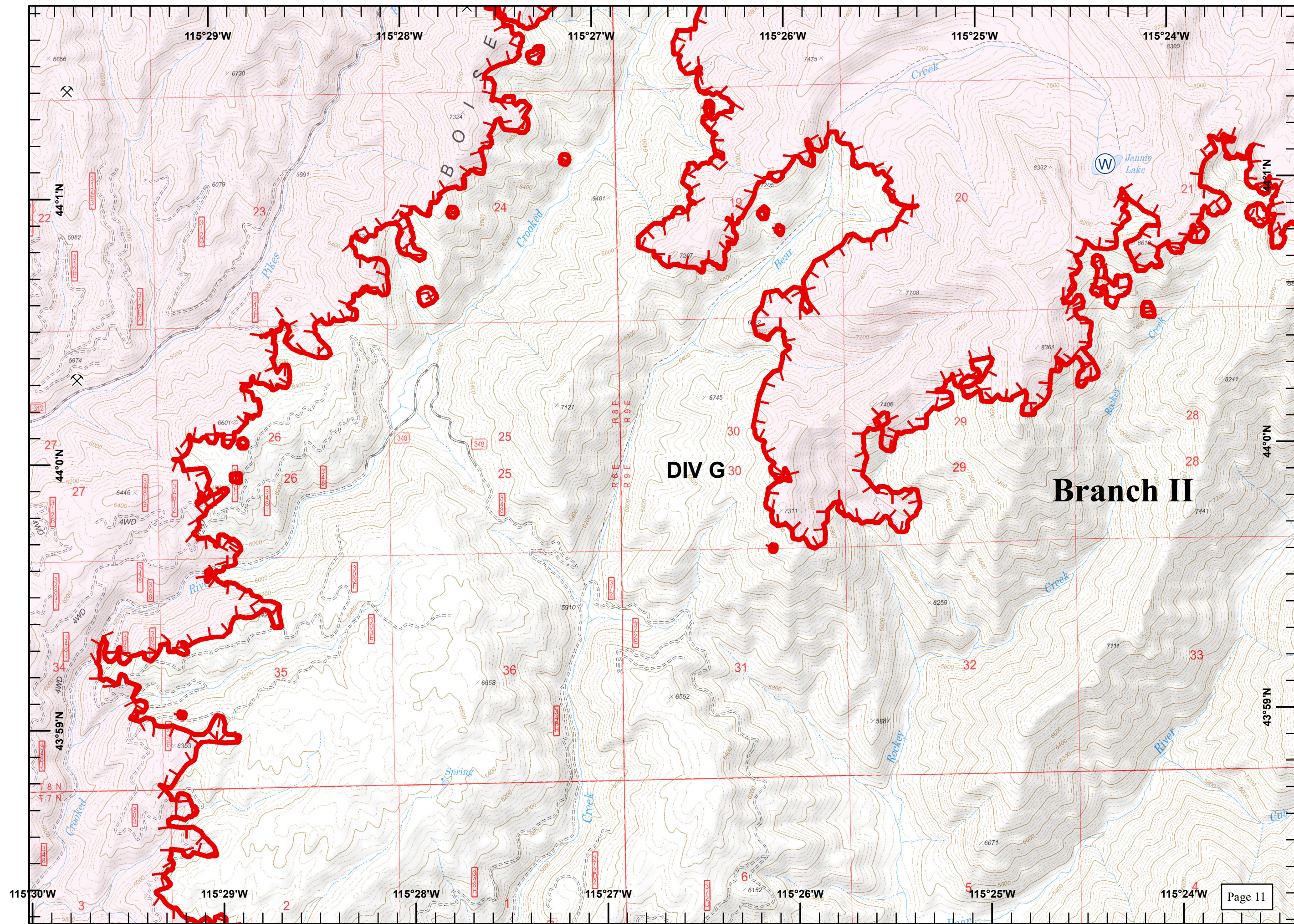
0 0.25 0.5

Great Basin
 August 24, 2016
 2208

Pioneer Fire
ID-BOF-000539
8/24/16




Legend

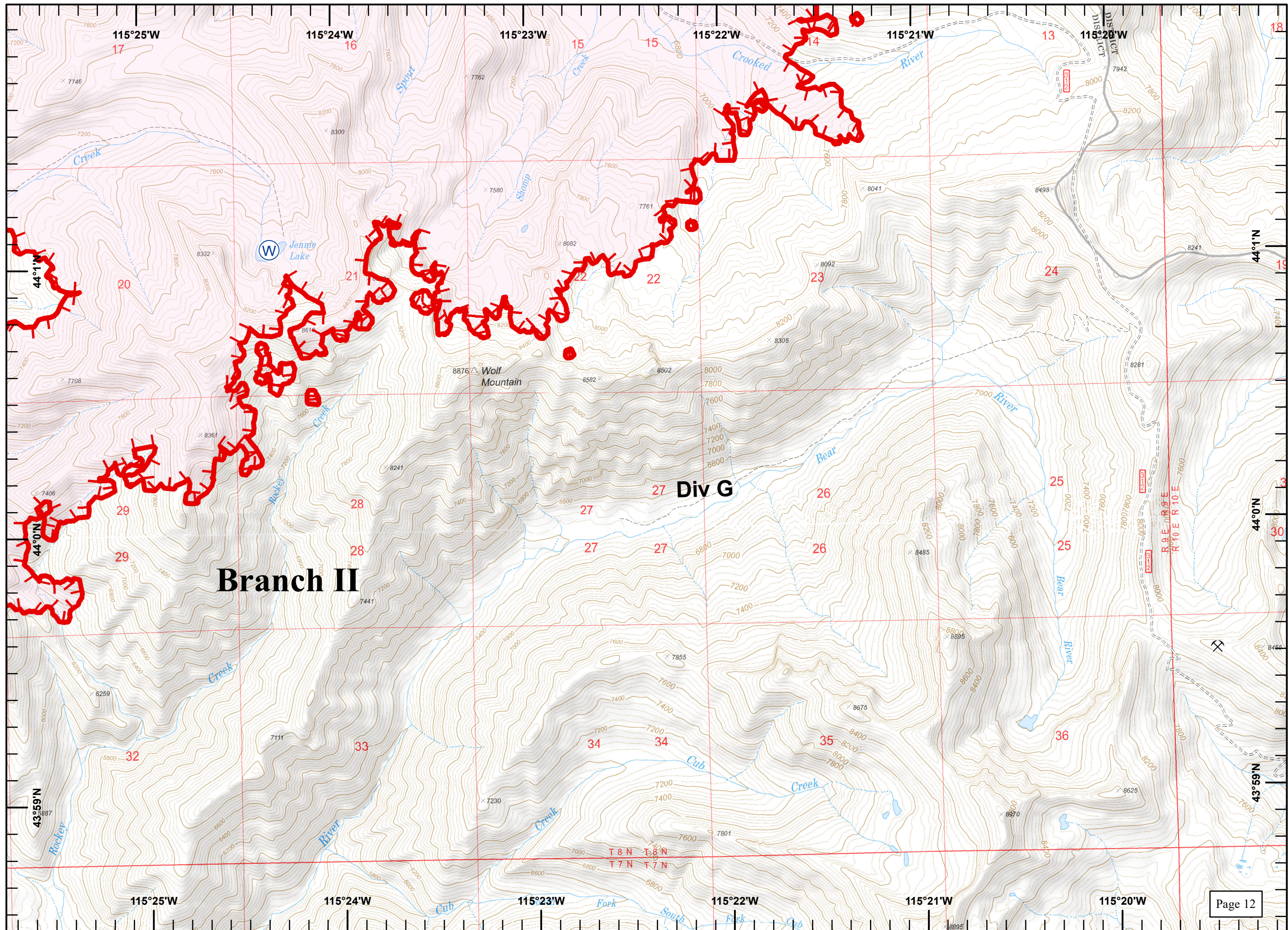
-  Water Source
-  Mine
-  Uncontrolled Fire Edge



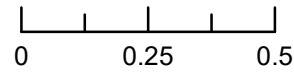
Pioneer Fire
ID-BOF-000539
8/24/16

Legend

-  Water Source
-  Mine
-  Uncontrolled Fire Edge



Miles

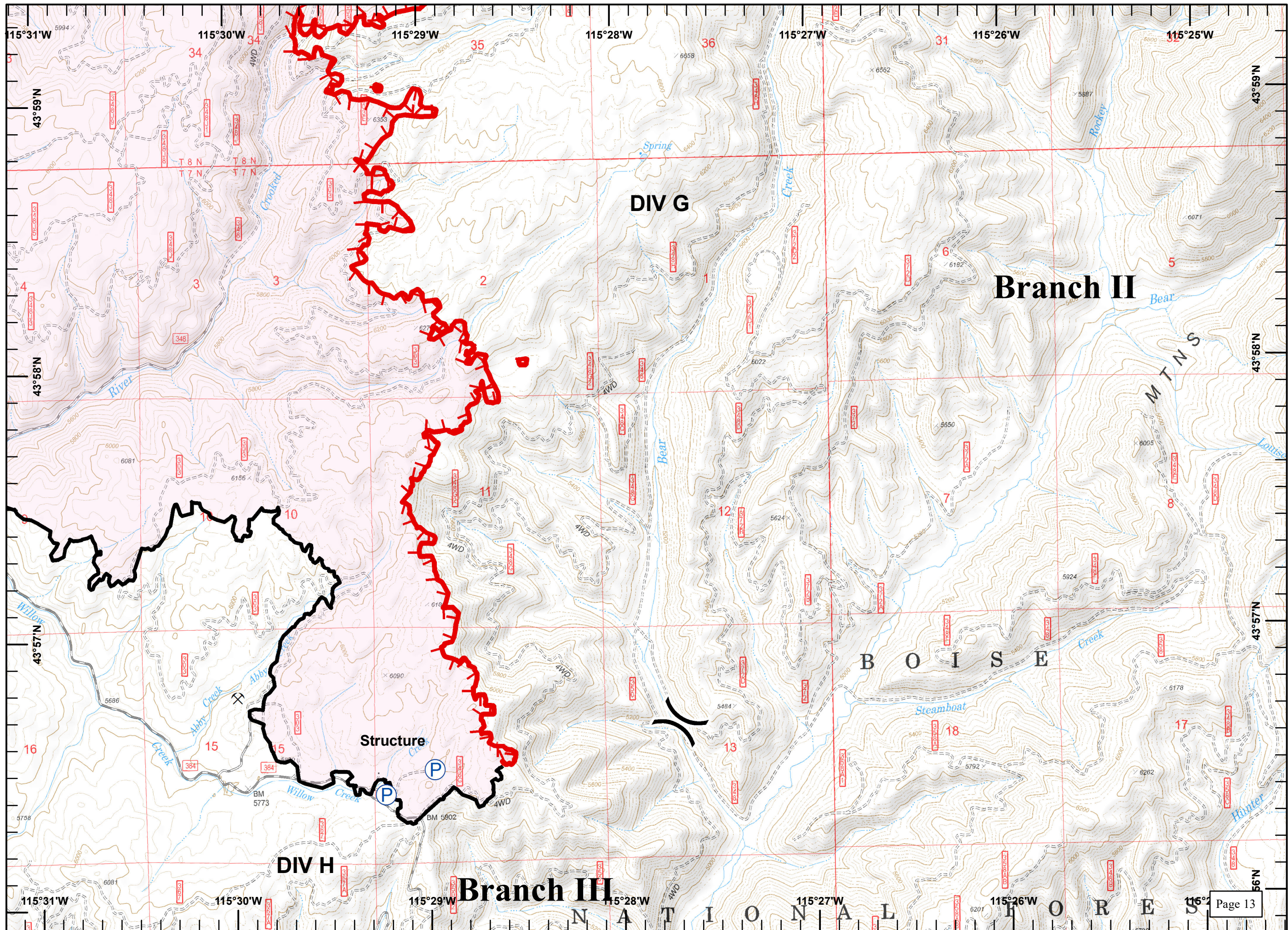


Great Basin
August 24, 2016
2210

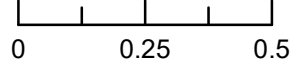
Pioneer Fire
ID-BOF-000539
8/24/16

Legend

- Highlighted Feature
- Pump
- Division Break
- Mine
- Uncontrolled Fire Edge
- Completed Line



Miles



Pioneer Fire
ID-BOF-000539
8/24/16

Legend

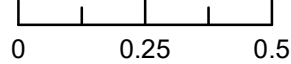
- Drop Point
- Highlighted Feature
- P Pump
- W Water Source
- Mine
- Uncontrolled Fire Edge
- Completed Line
- H - Hand Line

Sites

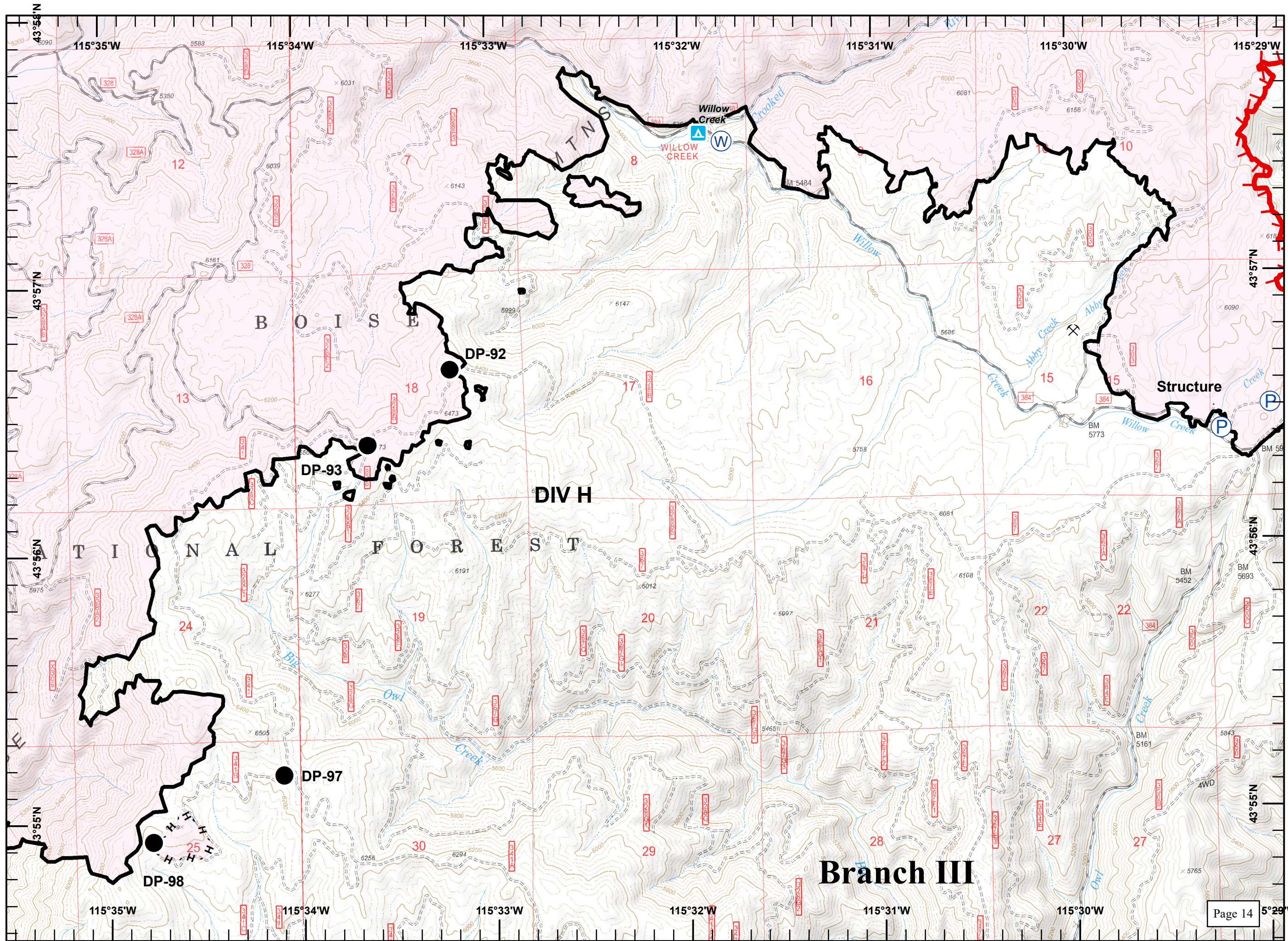
- ▲ Campground



Miles



Great Basin
 August 24, 2016
 2212



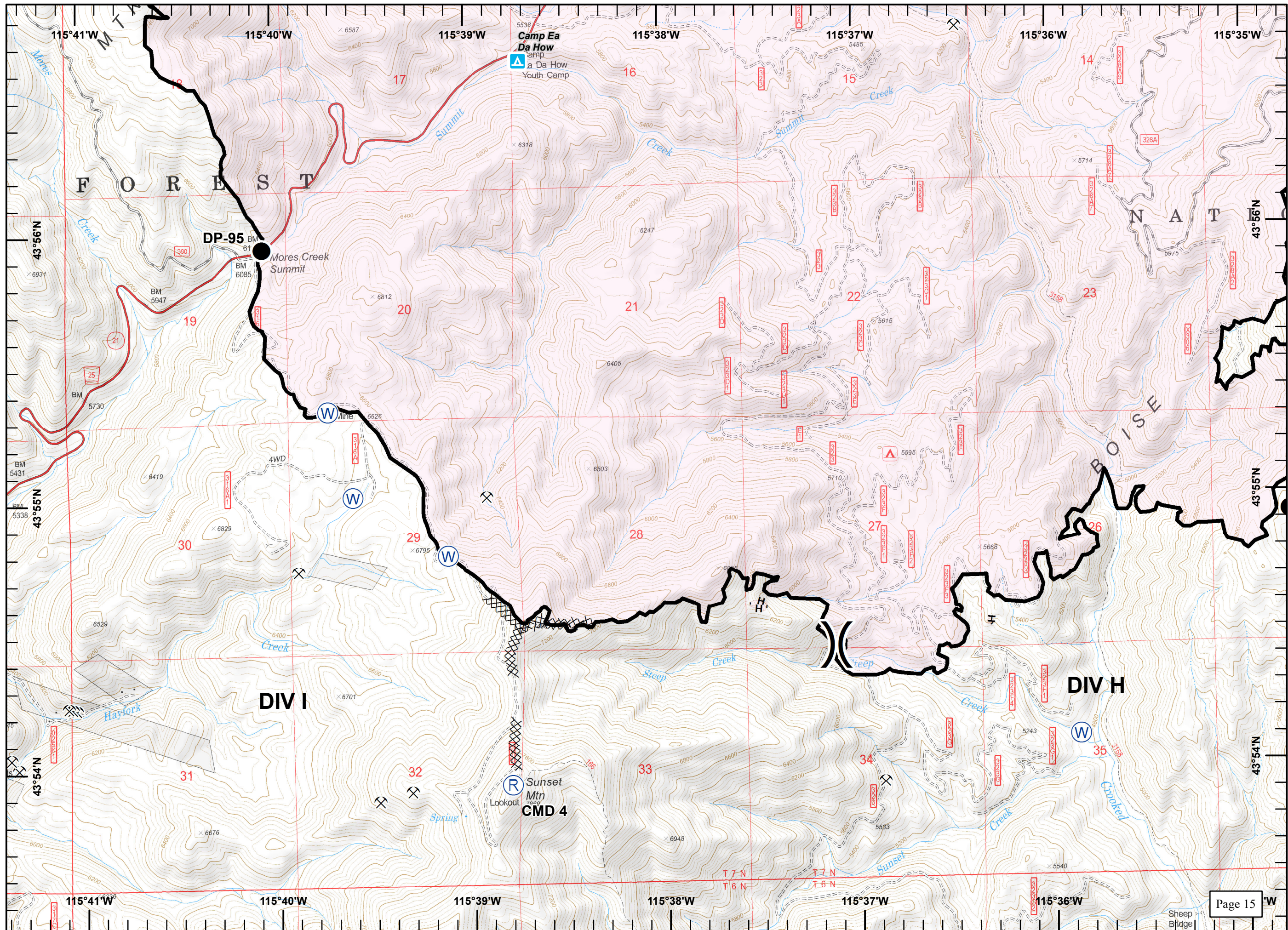
Pioneer Fire
ID-BOF-000539
8/24/16

Legend

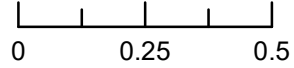
- Drop Point
- Ⓡ Repeater
- Ⓣ Telephone
- Ⓦ Water Source
- ⌘ Division Break
- ⚡ Mine
- Completed Line
- ⓧ Completed Dozer Line
- H - Hand Line

Sites

- Ⓜ Campground



Miles



Pioneer Fire
ID-BOF-000539
8/24/16

Legend

- Drop Point
- ⊗ Fire Origin
- Helispot
- Highlighted Feature
- WX Mobile Weather Unit
- Ⓡ Repeater
- ⌘ Division Break
- ⚡ Mine
- ▬ Uncontrolled Fire Edge
- ▬ Completed Line
- R - Road as Completed Line

