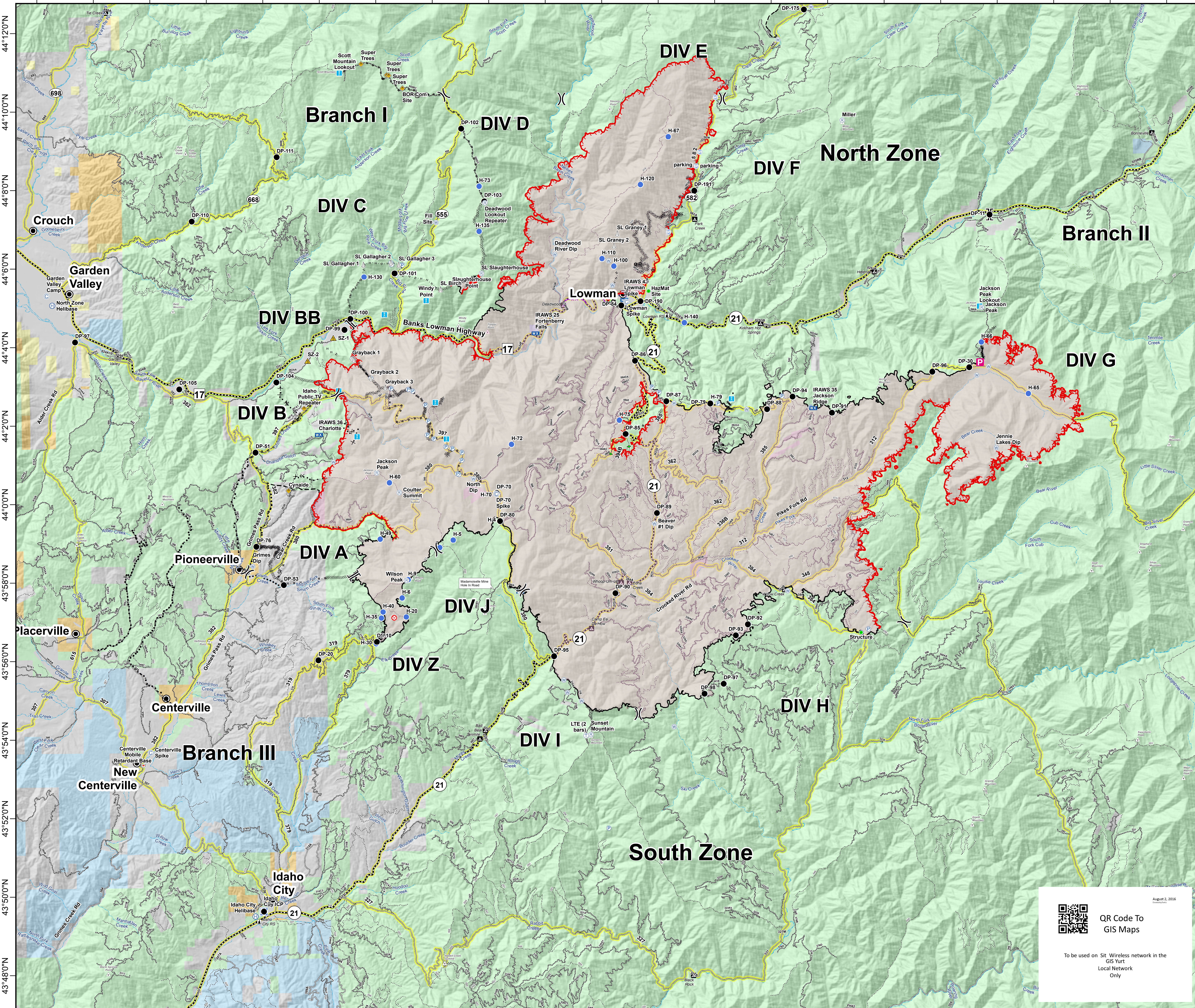


115°58'0"W 115°56'0"W 115°54'0"W 115°52'0"W 115°50'0"W 115°48'0"W 115°46'0"W 115°44'0"W 115°42'0"W 115°40'0"W 115°38'0"W 115°36'0"W 115°34'0"W 115°32'0"W 115°30'0"W 115°28'0"W 115°26'0"W 115°24'0"W 115°22'0"W 115°20'0"W 115°18'0"W



**Pioneer Fire**  
**ID-BOF-000539**  
**Transportation Map**  
**August 24, 2016**  
**100,367 Acres**

- Legend**
- Camp
  - Drop Point
  - Fire Origin
  - Helibase
  - Helispot
  - Highlighted Feature
  - Incident Command Post
  - Lookout
  - Mobile Weather Unit
  - Pump
  - Repeater
  - Retardant/Mud Pit
  - Safety Zone
  - Sling Site
  - Staging Area
  - Telephone
  - Water Source
  - Hazard
  - Division Break
  - Branch Break
  - Uncontrolled Fire Edge
  - Completed Line
  - Road as Completed Line
  - Completed Dozer Line
  - Hand Line
  - Plow Line
  - Proposed Dozer Line
  - Planned Fire Line
  - Planned Secondary Line
  - Aerial Hazard
  - Other
  - Town
  - Mountain Peak
  - Ranger Station
  - Campground
  - Highway
  - All Vehicle Roads
  - High Clearance Roads
  - Secondary Travel Routes

44°12'0"N  
44°10'0"N  
44°8'0"N  
44°6'0"N  
44°4'0"N  
44°2'0"N  
44°0'0"N  
43°58'0"N  
43°56'0"N  
43°54'0"N  
43°52'0"N  
43°50'0"N  
43°48'0"N

August 2, 2016

QR Code To GIS Maps

To be used on Sit Wireless network in the GIS Turt Local Network Only

8/23/2016 11:47:55 PM

0 1 2 3 4 Miles

115°58'0"W 115°56'0"W 115°54'0"W 115°52'0"W 115°50'0"W 115°48'0"W 115°46'0"W 115°44'0"W 115°42'0"W 115°40'0"W 115°38'0"W 115°36'0"W 115°34'0"W 115°32'0"W 115°30'0"W 115°28'0"W 115°26'0"W 115°24'0"W 115°22'0"W 115°20'0"W 115°18'0"W