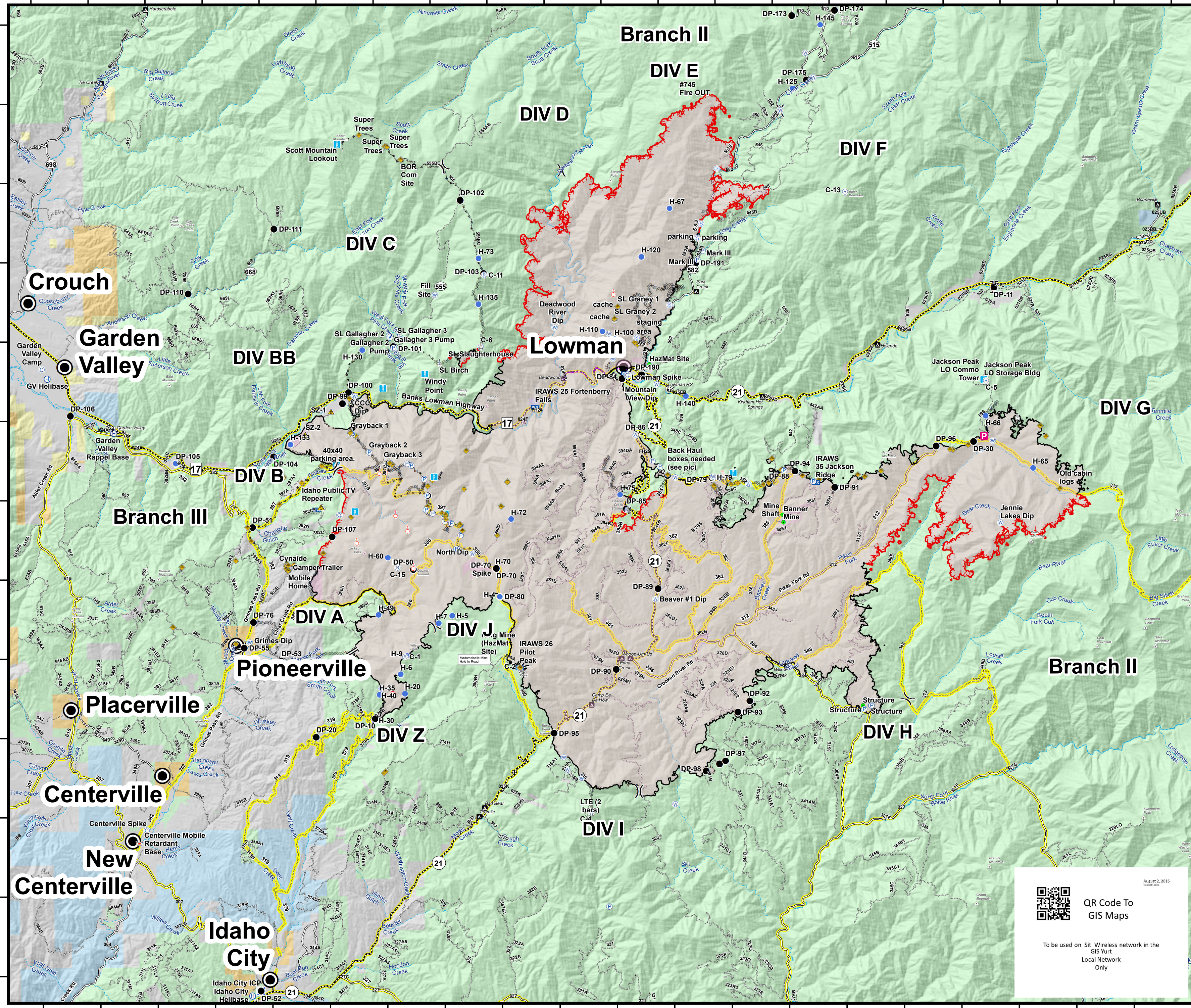


115°58'0"W 115°54'0"W 115°50'0"W 115°46'0"W 115°42'0"W 115°38'0"W 115°34'0"W 115°30'0"W 115°26'0"W 115°22'0"W 115°18'0"W

**Pioneer Fire**  
**ID-BOF-000539**  
**Transportation Map**  
**August 27, 2016**  
**104,263 Acres**

44°12'0"N  
44°10'0"N  
44°8'0"N  
44°6'0"N  
44°4'0"N  
44°2'0"N  
44°0'0"N  
43°58'0"N  
43°56'0"N  
43°54'0"N  
43°52'0"N  
43°50'0"N

44°12'0"N  
44°10'0"N  
44°8'0"N  
44°6'0"N  
44°4'0"N  
44°2'0"N  
44°0'0"N  
43°58'0"N  
43°56'0"N  
43°54'0"N  
43°52'0"N  
43°50'0"N



**Legend**

**Feature Category (Point Type)**

- Camp
- Drop Point
- Fire Origin
- Helibase
- Helispot
- Highlighted Feature
- Incident Command Post
- Lookout
- Mobile Weather Unit
- Pump
- Repeater
- Retardant/Mud Pit
- Safety Zone
- Sling Site
- Spot Fire
- Staging Area
- Water Source
- Hazard
- Division Break
- Branch Break

**Feature Category (Line Type)**

- Uncontrolled Fire Edge
- Completed Line
- R Road as Completed Line
- Completed Dozer Line
- Hand Line
- Aerial Hazard

**Feature Category (Polygon Type)**

- Wildfire Daily Fire Perimeter
- All Vehicle Roads
- High Clearance Roads
- Secondary Travel Routes
- Town

August 2, 2016  
8:18:13 PM

QR Code To GIS Maps

To be used on Sit Wireless network in the GIS Yurt Local Network Only

8/26/2016 8:18:13 PM

1 2 3 4  
Miles

115°58'0"W 115°54'0"W 115°50'0"W 115°46'0"W 115°42'0"W 115°38'0"W 115°34'0"W 115°30'0"W 115°26'0"W 115°22'0"W 115°18'0"W