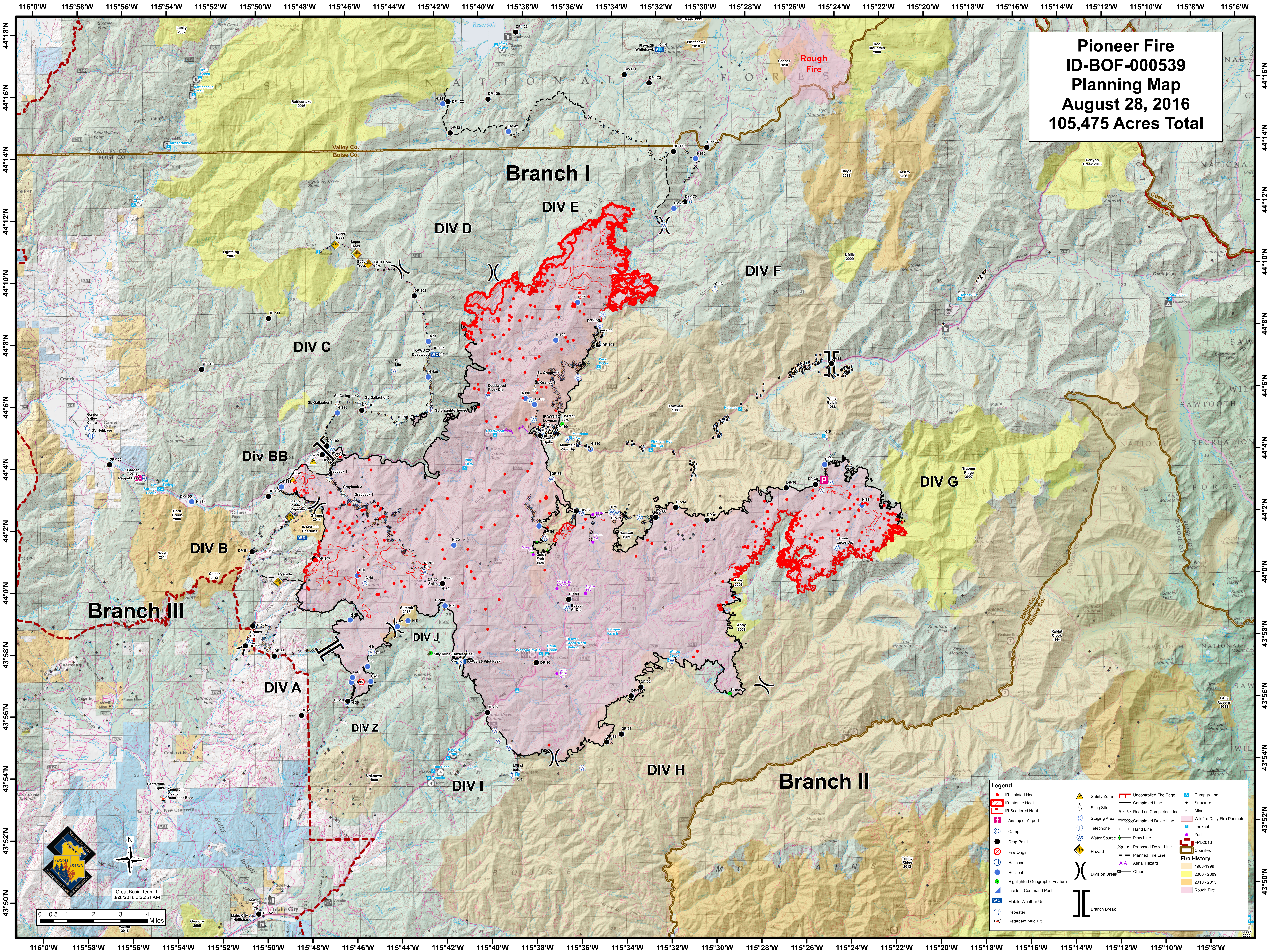


**Pioneer Fire
ID-BOF-000539
Planning Map
August 28, 2016
105,475 Acres Total**



Legend

● IR Isolated Heat	▲ Safety Zone	— Completed Line	▲ Campground
■ IR Intense Heat	○ Sling Site	— Road as Completed Line	■ Structure
■ IR Scattered Heat	○ Staging Area	— Completed Dozer Line	■ Mine
✈ Airstrip or Airport	○ Telephone	— Proposed Dozer Line	■ Wildfire Daily Fire Perimeter
○ Camp	○ Hand Line	— Aerial Hazard	■ FPD2016
● Drop Point	○ Water Source	○ Other	■ Counties
⊗ Fire Origin	◆ Hazard	○ Other	■ Fire History
○ Helibase	○ Division Break	○ Other	■ 1988-1999
○ Helispot	Branch Break	○ Other	■ 2000-2009
○ Highlighted Geographic Feature			■ 2010-2015
○ Incident Command Post			■ Rough Fire
○ Mobile Weather Unit			
○ Repeater			
○ Retardant/Mud Pit			

Great Basin Team 1
8/28/2016 3:26:51 AM

0 0.5 1 2 3 4 Miles

116°0'W 115°58'W 115°56'W 115°54'W 115°52'W 115°50'W 115°48'W 115°46'W 115°44'W 115°42'W 115°40'W 115°38'W 115°36'W 115°34'W 115°32'W 115°30'W 115°28'W 115°26'W 115°24'W 115°22'W 115°20'W 115°18'W 115°16'W 115°14'W 115°12'W 115°10'W 115°8'W 115°6'W

44°18'N 44°16'N 44°14'N 44°12'N 44°10'N 44°8'N 44°6'N 44°4'N 44°2'N 44°0'N 43°58'N 43°56'N 43°54'N 43°52'N 43°50'N

44°18'N 44°16'N 44°14'N 44°12'N 44°10'N 44°8'N 44°6'N 44°4'N 44°2'N 44°0'N 43°58'N 43°56'N 43°54'N 43°52'N 43°50'N