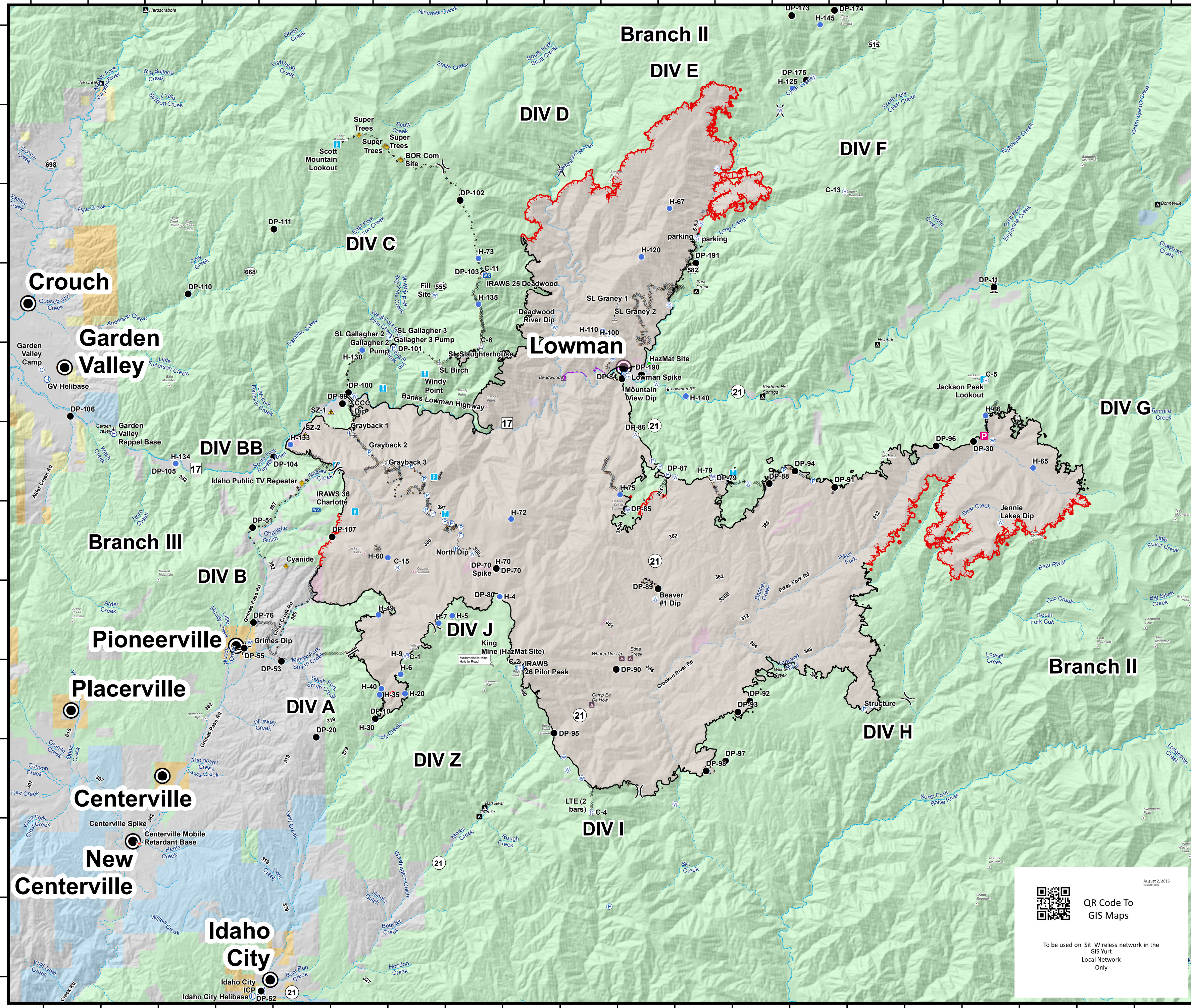


115°58'0"W 115°54'0"W 115°50'0"W 115°46'0"W 115°42'0"W 115°38'0"W 115°34'0"W 115°30'0"W 115°26'0"W 115°22'0"W 115°18'0"W

Pioneer Fire
ID-BOF-000539
Transportation Map
August 28, 2016
105,475 Acres

44°12'0"N
44°10'0"N
44°8'0"N
44°6'0"N
44°4'0"N
44°2'0"N
44°0'0"N
43°58'0"N
43°56'0"N
43°54'0"N
43°52'0"N
43°50'0"N

44°12'0"N
44°10'0"N
44°8'0"N
44°6'0"N
44°4'0"N
44°2'0"N
44°0'0"N
43°58'0"N
43°56'0"N
43°54'0"N
43°52'0"N
43°50'0"N



Legend

Feature Category (Point Type)

- Camp
- Drop Point
- Fire Origin
- Helibase
- Helispot
- Highlighted Feature
- Incident Command Post
- Lookout
- Mobile Weather Unit
- Pump
- Repeater
- Retardant/Mud Pit
- Safety Zone
- Sling Site
- Staging Area
- Water Source
- Hazard
- Division Break
- Branch Break

Feature Category (Line Type)

- Uncontrolled Fire Edge
- Completed Line
- R Road as Completed Line
- Completed Dozer Line
- Hand Line
- Aerial Hazard

Feature Category (Polygon Type)

- Wildfire Daily Fire Perimeter
- Town

August 2, 2016

QR Code To GIS Maps

To be used on Sit. Wireless network in the GIS Yurt Local Network Only

8/27/2016 11:15:07 PM

1 2 3 4 Miles

115°58'0"W 115°54'0"W 115°50'0"W 115°46'0"W 115°42'0"W 115°38'0"W 115°34'0"W 115°30'0"W 115°26'0"W 115°22'0"W 115°18'0"W