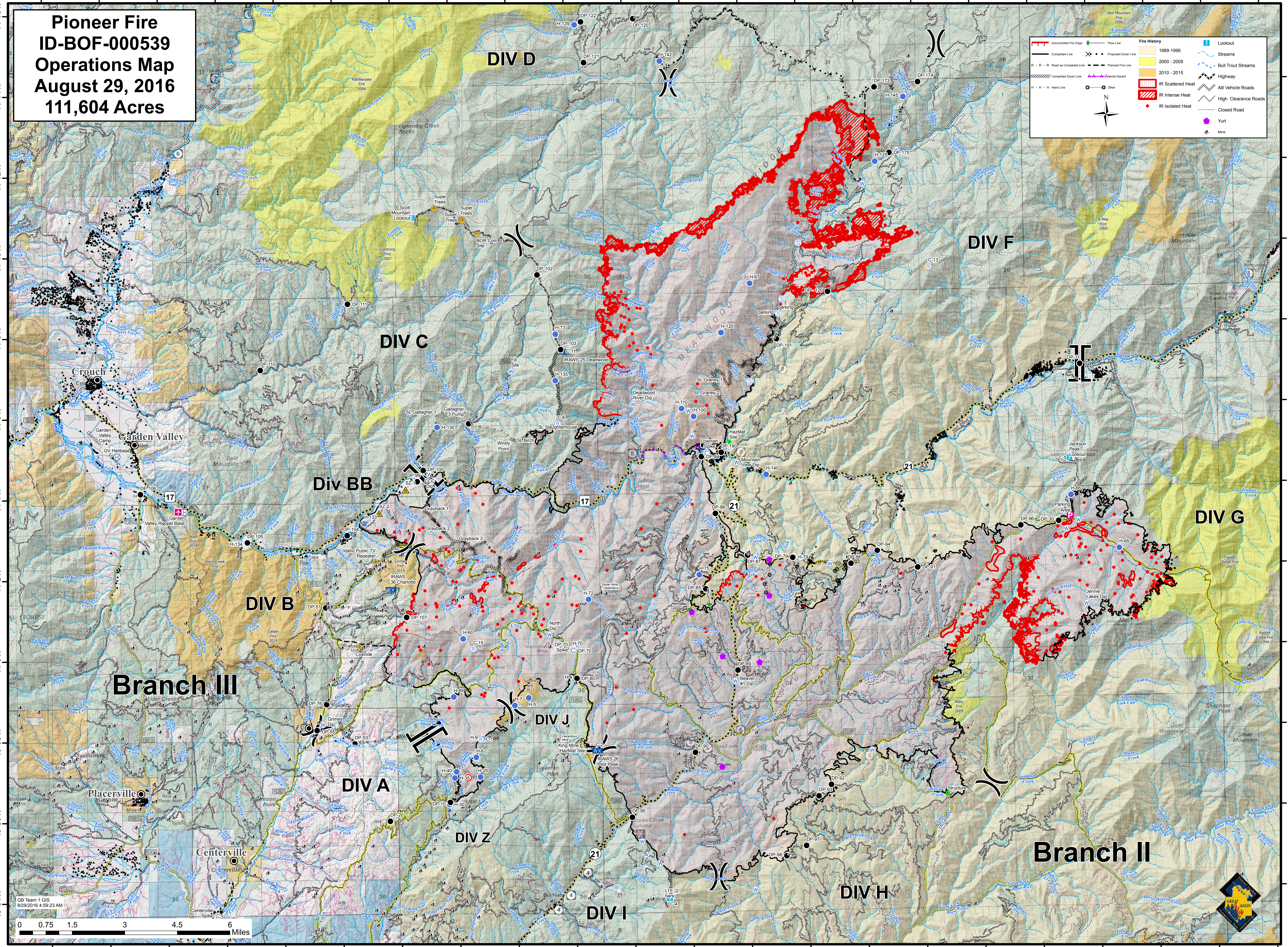


116°0'W 115°58'W 115°56'W 115°54'W 115°52'W 115°50'W 115°48'W 115°46'W 115°44'W 115°42'W 115°40'W 115°38'W 115°36'W 115°34'W 115°32'W 115°30'W 115°28'W 115°26'W 115°24'W 115°22'W 115°20'W 115°18'W

Pioneer Fire ID-BOF-000539 Operations Map August 29, 2016 111,604 Acres

Uncontrolled Fire Edge	Flow Line	1989-1999	Lookout
Completed Line	Proposed Dozer Line	2000-2009	Streams
Road as Completed Line	Planned Fire Line	2010-2015	Bull Trout Streams
Completed Dozer Line	Aerial Hazards	IR Scattered Heat	Highway
Hand Line	Other	IR Intense Heat	All Vehicle Roads
		IR Isolated Heat	High Clearance Roads
			Closed Road
			Yurt
			Mine



116°0'W 115°58'W 115°56'W 115°54'W 115°52'W 115°50'W 115°48'W 115°46'W 115°44'W 115°42'W 115°40'W 115°38'W 115°36'W 115°34'W 115°32'W 115°30'W 115°28'W 115°26'W 115°24'W 115°22'W 115°20'W 115°18'W

0 0.75 1.5 3 4.5 6 Miles

GB Team 1 GIS
8/29/2016 4:59:23 AM

