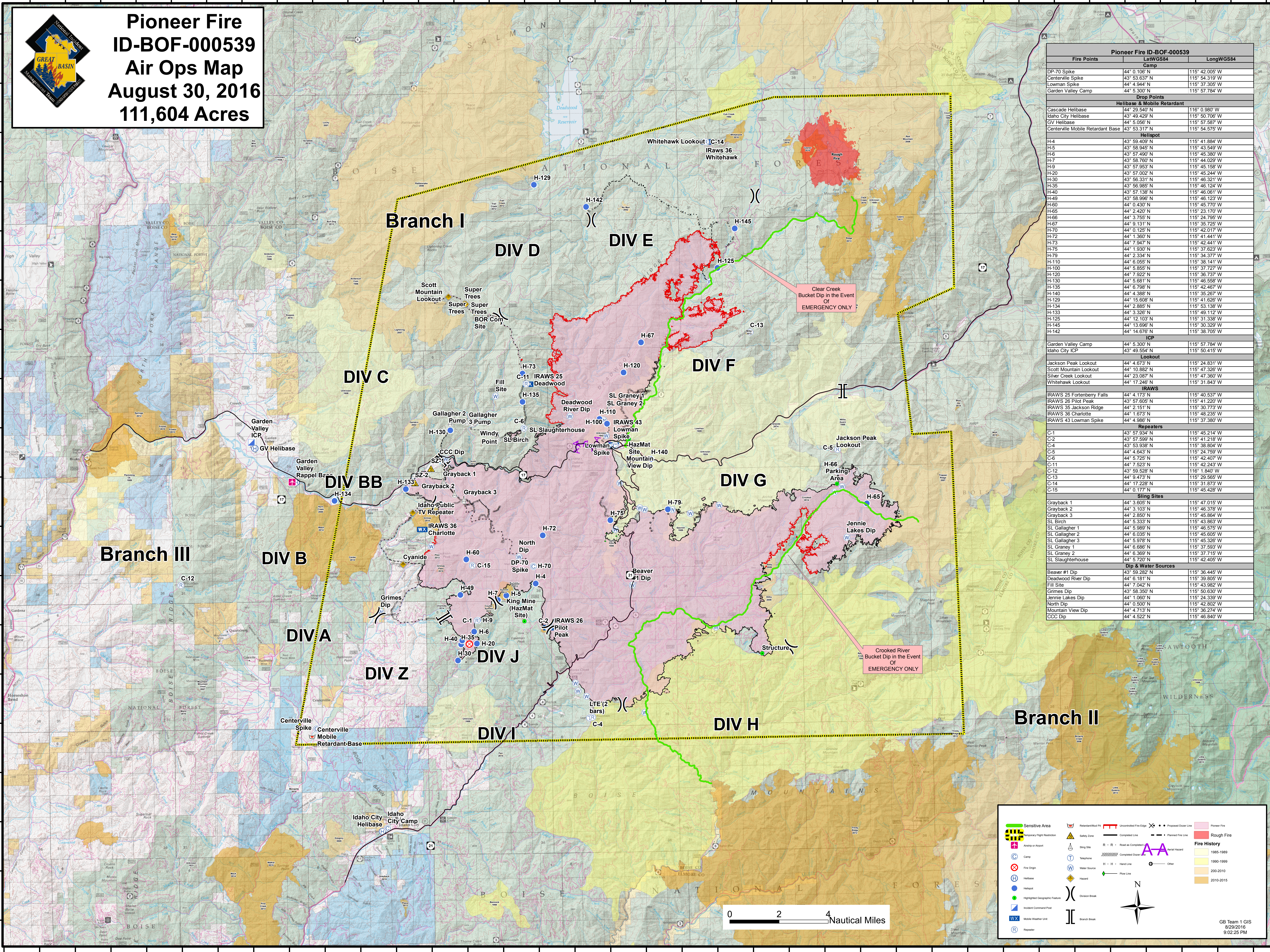




**Pioneer Fire**  
**ID-BOF-000539**  
**Air Ops Map**  
**August 30, 2016**  
**111,604 Acres**

Pioneer Fire ID-BOF-000539		
Fire Points	LatWGS84	LongWGS84
DP-70 Spike	44° 0.106' N	115° 42.005' W
Centerville Spike	43° 53.637' N	115° 54.319' W
Lowman Spike	44° 4.944' N	115° 37.365' W
Garden Valley Camp	44° 5.300' N	115° 57.784' W
<b>Drop Points</b>		
<b>Helibase &amp; Mobile Retardant</b>		
Cascade Helibase	44° 29.540' N	116° 0.980' W
Idaho City Helibase	43° 49.429' N	115° 50.706' W
GV Helibase	44° 5.056' N	115° 57.587' W
Centerville Mobile Retardant Base	43° 53.317' N	115° 54.575' W
<b>Helispot</b>		
H-4	43° 59.409' N	115° 41.884' W
H-5	43° 58.945' N	115° 43.549' W
H-6	43° 57.490' N	115° 45.380' W
H-7	43° 58.760' N	115° 44.029' W
H-8	43° 57.953' N	115° 45.158' W
H-9	43° 57.002' N	115° 45.244' W
H-10	43° 56.331' N	115° 46.321' W
H-35	43° 56.985' N	115° 46.124' W
H-40	43° 57.138' N	115° 46.061' W
H-49	43° 58.996' N	115° 46.123' W
H-60	44° 0.430' N	115° 45.770' W
H-65	44° 2.420' N	115° 23.170' W
H-66	44° 3.765' N	115° 34.798' W
H-67	44° 9.131' N	115° 35.725' W
H-70	44° 0.125' N	115° 42.017' W
H-72	44° 1.360' N	115° 41.441' W
H-73	44° 7.947' N	115° 42.441' W
H-75	44° 1.930' N	115° 37.623' W
H-79	44° 2.334' N	115° 34.377' W
H-110	44° 6.055' N	115° 38.141' W
H-100	44° 5.855' N	115° 37.727' W
H-120	44° 7.922' N	115° 36.737' W
H-130	44° 5.681' N	115° 46.558' W
H-135	44° 6.798' N	115° 42.467' W
H-140	44° 4.388' N	115° 35.267' W
H-129	44° 15.608' N	115° 41.626' W
H-134	44° 2.885' N	115° 38.138' W
H-133	44° 3.326' N	115° 49.112' W
H-125	44° 12.103' N	115° 31.338' W
H-145	44° 13.696' N	115° 30.329' W
H-142	44° 14.676' N	115° 38.705' W
<b>ICP</b>		
Garden Valley Camp	44° 5.300' N	115° 57.784' W
Idaho City ICP	43° 49.554' N	115° 50.415' W
<b>Lookout</b>		
Jackson Peak Lookout	44° 4.673' N	115° 24.831' W
Scott Mountain Lookout	44° 10.882' N	115° 47.326' W
Silver Creek Lookout	44° 23.087' N	115° 47.360' W
Whitehawk Lookout	44° 17.246' N	115° 31.843' W
<b>IRAWS</b>		
IRAWS 25 Fortenberry Falls	44° 4.173' N	115° 40.637' W
IRAWS 26 Pilot Peak	43° 57.605' N	115° 41.220' W
IRAWS 35 Jackson Ridge	44° 2.151' N	115° 30.773' W
IRAWS 36 Charlotte	44° 1.673' N	115° 48.235' W
IRAWS 43 Lowman Spike	44° 4.986' N	115° 37.380' W
<b>Repeaters</b>		
C-1	43° 57.934' N	115° 45.214' W
C-2	43° 57.599' N	115° 41.218' W
C-4	43° 53.938' N	115° 38.604' W
C-5	44° 4.643' N	115° 24.759' W
C-6	44° 5.725' N	115° 42.407' W
C-11	44° 7.523' N	115° 42.243' W
C-12	43° 59.528' N	116° 1.840' W
C-13	44° 9.473' N	115° 29.565' W
C-14	44° 17.228' N	115° 31.873' W
C-15	44° 0.177' N	115° 45.428' W
<b>Slings Sites</b>		
Grayback 1	44° 3.605' N	115° 47.015' W
Grayback 2	44° 3.103' N	115° 46.378' W
Grayback 3	44° 2.850' N	115° 45.864' W
SL Birch	44° 5.333' N	115° 43.863' W
SL Gallagher 1	44° 5.989' N	115° 48.575' W
SL Gallagher 2	44° 6.035' N	115° 45.605' W
SL Gallagher 3	44° 5.978' N	115° 45.326' W
SL Graney 1	44° 6.686' N	115° 37.593' W
SL Graney 2	44° 6.369' N	115° 37.715' W
SL Slaughterhouse	44° 5.720' N	115° 42.405' W
<b>Dip &amp; Water Sources</b>		
Beaver #1 Dip	43° 59.252' N	115° 36.445' W
Deadwood River Dip	44° 6.181' N	115° 39.805' W
Fill Site	44° 7.042' N	115° 43.982' W
Grimes Dip	43° 58.350' N	115° 50.630' W
Jennie Lakes Dip	44° 1.060' N	115° 24.339' W
North Dip	44° 0.500' N	115° 42.802' W
Mountain View Dip	44° 4.713' N	115° 36.274' W
CCC Dip	44° 4.522' N	115° 46.840' W



**Sensitive Area**

- Sensitive Area
- Temporary Flight Restriction
- Camp
- Fire Origin
- Helibase
- Helispot
- Highlighted Geographic Feature
- Incident Command Post
- Mobile Weather Unit
- Repeater

**Fire History**

- 1985-1989
- 1990-1999
- 200-2010
- 2010-2015

**Other Symbols**

- Proposed Closure Line
- Placed Fire Line
- Power Fire
- Rough Fire
- Retardant Mud Pit
- Safety Zone
- Slings Site
- Telephone
- Water Source
- Hazard
- Flow Line
- Division Break
- Branch Break

**Scale & Orientation**

0 2 4 Nautical Miles

GB Team 1 GIS  
8/29/2016  
9:02:25 PM