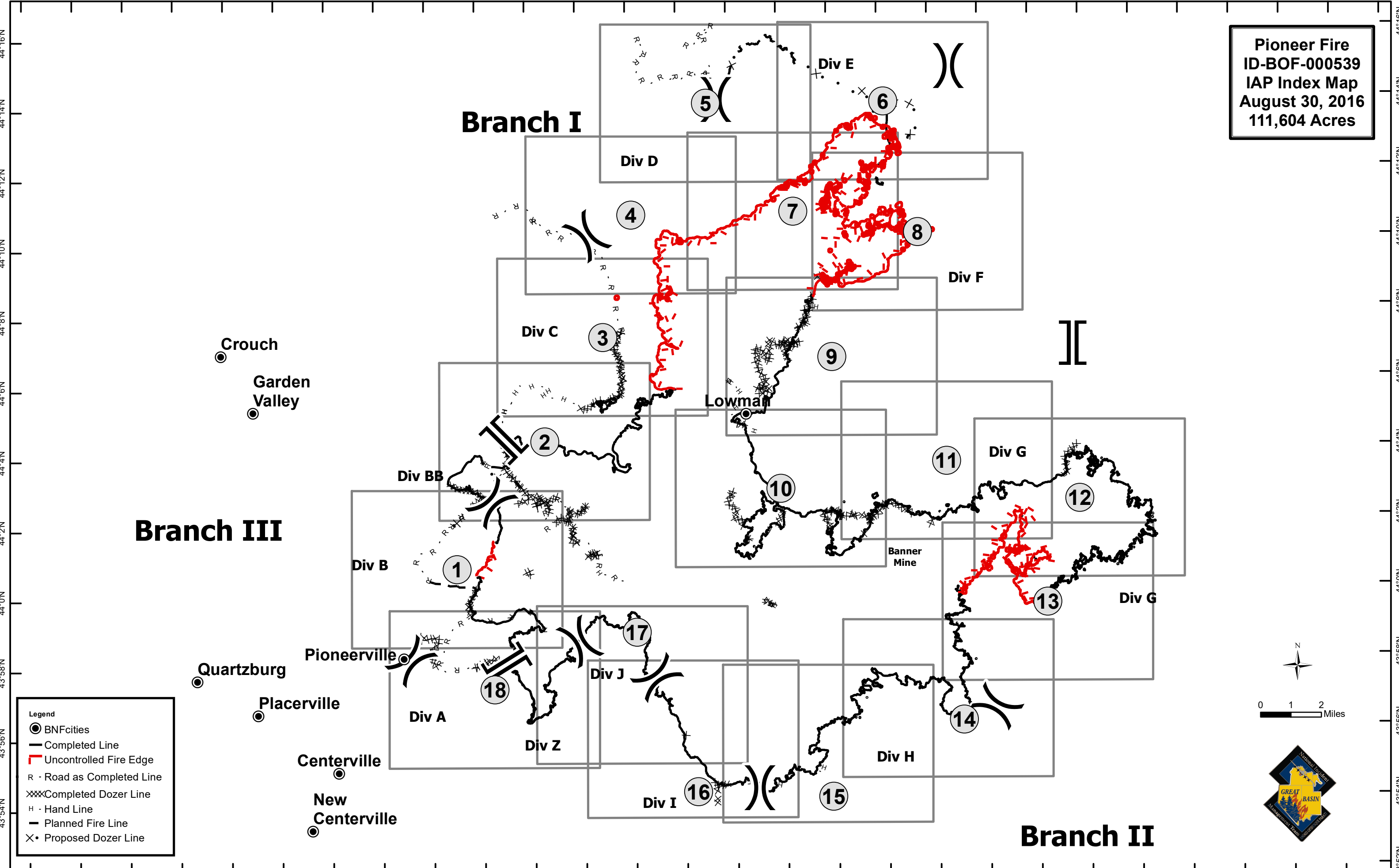


116°6'W 116°4'W 116°2'W 116°0'W 115°58'W 115°56'W 115°54'W 115°52'W 115°50'W 115°48'W 115°46'W 115°44'W 115°42'W 115°40'W 115°38'W 115°36'W 115°34'W 115°32'W 115°30'W 115°28'W 115°26'W 115°24'W 115°22'W 115°20'W 115°18'W 115°16'W 115°14'W 115°12'W



**Pioneer Fire**  
**ID-BOF-000539**  
**IAP Index Map**  
**August 30, 2016**  
**111,604 Acres**

**Branch III**

**Branch I**

**Branch II**

**Legend**

- BNFcities
- Completed Line
- Uncontrolled Fire Edge
- R · Road as Completed Line
- XXX Completed Dozer Line
- H · Hand Line
- Planned Fire Line
- X · Proposed Dozer Line

N

0 1 2 Miles



116°6'W 116°4'W 116°2'W 116°0'W 115°58'W 115°56'W 115°54'W 115°52'W 115°50'W 115°48'W 115°46'W 115°44'W 115°42'W 115°40'W 115°38'W 115°36'W 115°34'W 115°32'W 115°30'W 115°28'W 115°26'W 115°24'W 115°22'W 115°20'W 115°18'W 115°16'W 115°14'W 115°12'W