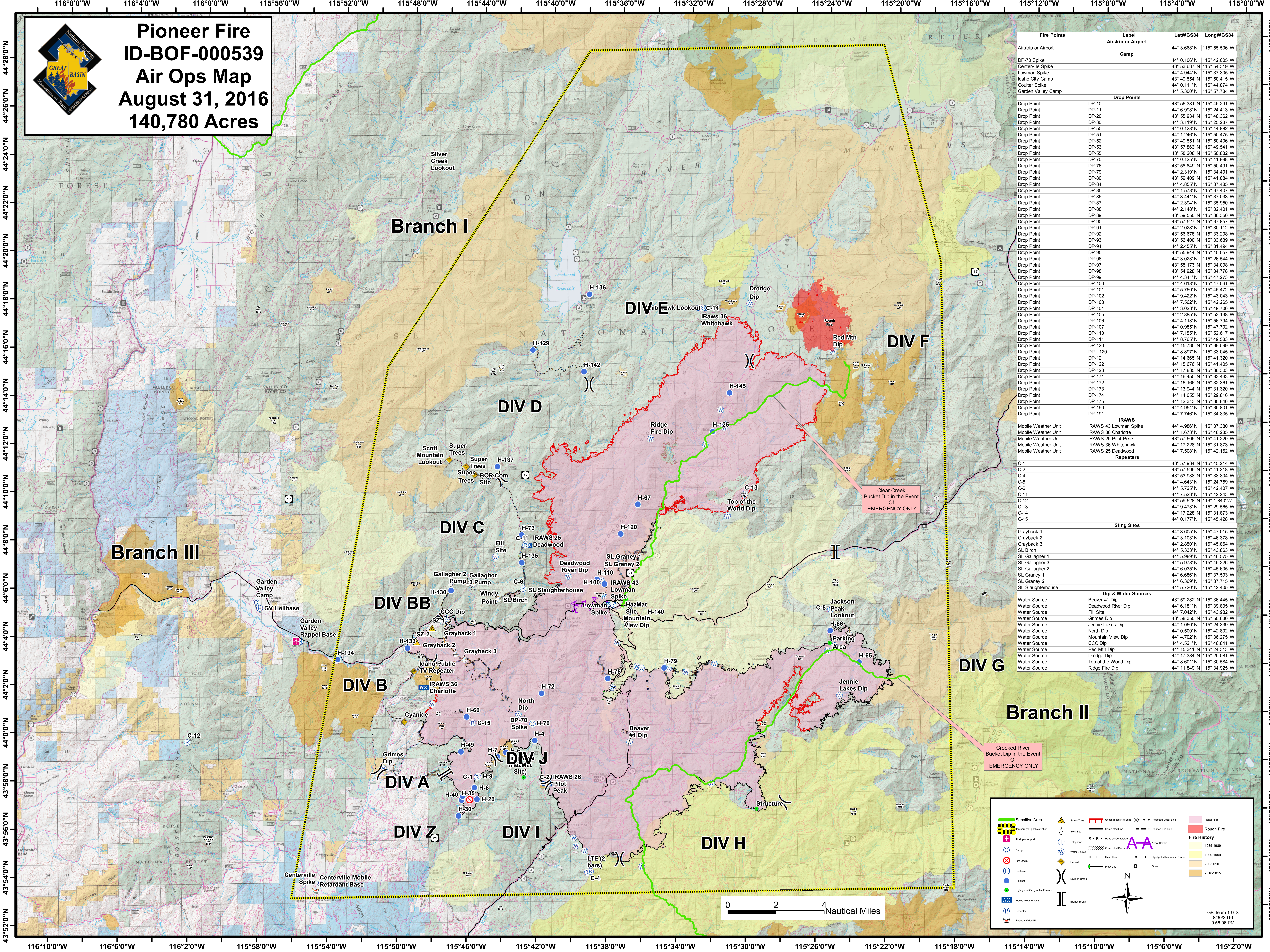




Pioneer Fire
ID-BOF-000539
Air Ops Map
August 31, 2016
140,780 Acres



Fire Points	Label	LatWGS84	LongWGS84
Airstrip or Airport	Camp	44° 3' 668" N	115° 5' 506" W
DP-70 Spike		44° 0' 106" N	115° 42' 005" W
Centerville Spike		43° 53' 637" N	115° 54' 319" W
Lowman Spike		44° 4' 944" N	115° 37' 305" W
Idaho City Camp		43° 49' 554" N	115° 50' 415" W
Coulter Spike		44° 0' 111" N	115° 44' 882" W
Garden Valley Camp		44° 5' 300" N	115° 57' 754" W
Drop Points			
Drop Point	DP-10	43° 56' 381" N	115° 46' 291" W
Drop Point	DP-11	44° 6' 998" N	115° 24' 413" W
Drop Point	DP-20	43° 55' 934" N	115° 48' 362" W
Drop Point	DP-30	44° 3' 119" N	115° 25' 237" W
Drop Point	DP-50	44° 0' 128" N	115° 44' 882" W
Drop Point	DP-51	44° 1' 249" N	115° 50' 475" W
Drop Point	DP-52	43° 49' 551" N	115° 50' 406" W
Drop Point	DP-53	43° 57' 863" N	115° 49' 541" W
Drop Point	DP-55	43° 58' 208" N	115° 50' 832" W
Drop Point	DP-70	44° 0' 125" N	115° 41' 986" W
Drop Point	DP-76	43° 58' 849" N	115° 50' 491" W
Drop Point	DP-79	44° 2' 319" N	115° 34' 401" W
Drop Point	DP-80	43° 59' 409" N	115° 41' 884" W
Drop Point	DP-84	44° 4' 855" N	115° 37' 485" W
Drop Point	DP-85	44° 1' 578" N	115° 37' 407" W
Drop Point	DP-86	44° 3' 441" N	115° 37' 033" W
Drop Point	DP-87	44° 2' 394" N	115° 35' 950" W
Drop Point	DP-88	44° 2' 148" N	115° 32' 401" W
Drop Point	DP-89	43° 59' 550" N	115° 36' 350" W
Drop Point	DP-90	43° 57' 527" N	115° 37' 857" W
Drop Point	DP-91	44° 2' 028" N	115° 30' 112" W
Drop Point	DP-92	43° 56' 678" N	115° 33' 208" W
Drop Point	DP-93	43° 56' 400" N	115° 33' 639" W
Drop Point	DP-94	44° 2' 455" N	115° 31' 494" W
Drop Point	DP-95	43° 55' 944" N	115° 40' 057" W
Drop Point	DP-96	44° 3' 023" N	115° 26' 544" W
Drop Point	DP-97	43° 55' 173" N	115° 34' 098" W
Drop Point	DP-98	44° 54' 928" N	115° 34' 778" W
Drop Point	DP-99	44° 4' 341" N	115° 47' 273" W
Drop Point	DP-100	44° 4' 618" N	115° 47' 061" W
Drop Point	DP-101	44° 5' 760" N	115° 45' 472" W
Drop Point	DP-102	44° 9' 422" N	115° 43' 565" W
Drop Point	DP-103	44° 1' 562" N	115° 42' 265" W
Drop Point	DP-104	44° 3' 028" N	115° 45' 708" W
Drop Point	DP-105	44° 2' 885" N	115° 53' 138" W
Drop Point	DP-106	44° 4' 113" N	115° 56' 794" W
Drop Point	DP-107	44° 0' 985" N	115° 47' 702" W
Drop Point	DP-110	44° 7' 155" N	115° 52' 617" W
Drop Point	DP-111	44° 6' 765" N	115° 48' 585" W
Drop Point	DP-120	44° 1' 562" N	115° 38' 590" W
Drop Point	DP-120	44° 8' 897" N	115° 33' 045" W
Drop Point	DP-121	44° 14' 665" N	115° 41' 320" W
Drop Point	DP-122	44° 15' 676" N	115° 41' 405" W
Drop Point	DP-123	44° 17' 885" N	115° 38' 303" W
Drop Point	DP-171	44° 16' 450" N	115° 33' 483" W
Drop Point	DP-172	44° 16' 166" N	115° 32' 365" W
Drop Point	DP-173	44° 13' 944" N	115° 31' 300" W
Drop Point	DP-174	44° 14' 055" N	115° 29' 816" W
Drop Point	DP-175	44° 12' 313" N	115° 30' 846" W
Drop Point	DP-190	44° 4' 954" N	115° 36' 801" W
Drop Point	DP-191	44° 7' 746" N	115° 34' 835" W

IRAWS	IRAWS	IRAWS	IRAWS
Mobile Weather Unit	IRAWS 43 Lowman Spike	44° 4' 988" N	115° 37' 380" W
Mobile Weather Unit	IRAWS 36 Charlotte	44° 1' 673" N	115° 48' 235" W
Mobile Weather Unit	IRAWS 26 Pilot Peak	43° 57' 605" N	115° 41' 220" W
Mobile Weather Unit	IRAWS 36 Whitehawk	44° 17' 228" N	115° 31' 873" W
Mobile Weather Unit	IRAWS 25 Deadwood	44° 7' 508" N	115° 42' 152" W

Repeaters	Repeaters	Repeaters	Repeaters
C-1		43° 57' 934" N	115° 45' 214" W
C-2		43° 57' 599" N	115° 41' 216" W
C-4		43° 53' 938" N	115° 38' 804" W
C-5		44° 4' 643" N	115° 24' 759" W
C-6		44° 5' 725" N	115° 42' 407" W
C-11		44° 7' 523" N	115° 42' 243" W
C-12		43° 59' 528" N	116° 1' 840" W
C-13		44° 9' 473" N	115° 29' 565" W
C-14		44° 17' 228" N	115° 31' 873" W
C-15		44° 0' 177" N	115° 45' 428" W

Sling Sites	Sling Sites	Sling Sites	Sling Sites
Grayback 1		44° 3' 605" N	115° 47' 015" W
Grayback 2		44° 3' 103" N	115° 46' 378" W
Grayback 3		44° 2' 850" N	115° 45' 884" W
SL Birch		44° 5' 333" N	115° 43' 863" W
SL Gallagher 1		44° 5' 989" N	115° 46' 576" W
SL Gallagher 3		44° 5' 978" N	115° 45' 326" W
SL Gallagher 2		44° 6' 035" N	115° 45' 605" W
SL Graney 1		44° 6' 686" N	115° 37' 593" W
SL Graney 2		44° 6' 369" N	115° 37' 715" W
SL Slaughterhouse		44° 5' 720" N	115° 42' 405" W

Dip & Water Sources	Dip & Water Sources	Dip & Water Sources	Dip & Water Sources
Water Source	Beaver #1 Dip	43° 59' 282" N	115° 36' 445" W
Water Source	Deadwood River Dip	44° 6' 181" N	115° 39' 805" W
Water Source	Fill Site	44° 7' 042" N	115° 43' 982" W
Water Source	Grimes Dip	43° 58' 350" N	115° 50' 630" W
Water Source	Jennie Lakes Dip	44° 1' 060" N	115° 24' 339" W
Water Source	North Dip	44° 0' 500" N	115° 42' 802" W
Water Source	Mountain View Dip	44° 4' 702" N	115° 36' 275" W
Water Source	CCC Dip	44° 4' 521" N	115° 46' 841" W
Water Source	Red Mtn Dip	44° 15' 341" N	115° 24' 313" W
Water Source	Dredge Dip	44° 17' 384" N	115° 29' 081" W
Water Source	Top of the World Dip	44° 8' 601" N	115° 30' 584" W
Water Source	Ridge Fire Dip	44° 11' 849" N	115° 34' 925" W

Sensitive Area

- Airstrip or Airport
- Camp
- Fire Origin
- Helibase
- Helipad
- Highlighted Geographic Feature
- Mobile Weather Unit
- Repeater
- Retardant Base

Fire History

- 1985-1989
- 1990-1999
- 2000-2010
- 2010-2015

Proposed Dose Line

- Uncontrolled Fire Edge
- Completed Fire Line
- Planned Fire Line

Other

- Safety Zone
- Sling Site
- Telephone
- Road as Completed
- Completed Dose Line
- Planned Dose Line
- Hand Line
- Highlighted Mountain Feature
- Pine Line
- Division Break
- Branch Break

0 2 4 Nautical Miles

GB Team 1 GIS
8/30/2016
9:56:06 PM

Clear Creek
Bucket Dip in the Event
Of
EMERGENCY ONLY

Crooked River
Bucket Dip in the Event
Of
EMERGENCY ONLY