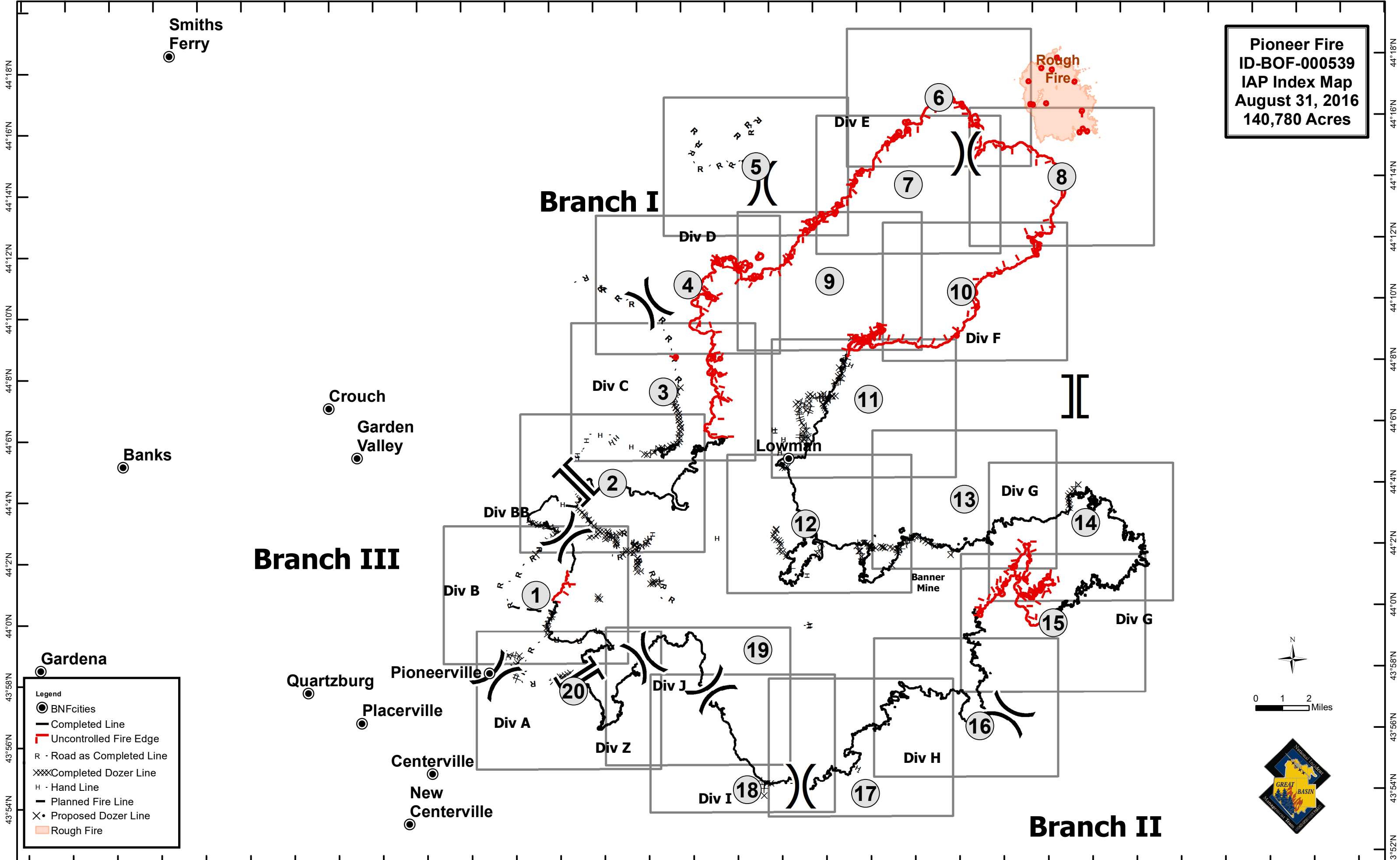


116°12'W 116°10'W 116°8'W 116°6'W 116°4'W 116°2'W 116°0'W 115°58'W 115°56'W 115°54'W 115°52'W 115°50'W 115°48'W 115°46'W 115°44'W 115°42'W 115°40'W 115°38'W 115°36'W 115°34'W 115°32'W 115°30'W 115°28'W 115°26'W 115°24'W 115°22'W 115°20'W 115°18'W 115°16'W 115°14'W 115°12'W 115°10'W



Pioneer Fire
ID-BOF-000539
IAP Index Map
August 31, 2016
140,780 Acres

Legend

- BNFcities
- Completed Line
- Uncontrolled Fire Edge
- R · Road as Completed Line
- xxx Completed Dozer Line
- H · Hand Line
- - - Planned Fire Line
- × Proposed Dozer Line
- Rough Fire

N

0 1 2 Miles



116°12'W 116°10'W 116°8'W 116°6'W 116°4'W 116°2'W 116°0'W 115°58'W 115°56'W 115°54'W 115°52'W 115°50'W 115°48'W 115°46'W 115°44'W 115°42'W 115°40'W 115°38'W 115°36'W 115°34'W 115°32'W 115°30'W 115°28'W 115°26'W 115°24'W 115°22'W 115°20'W 115°18'W 115°16'W 115°14'W 115°12'W