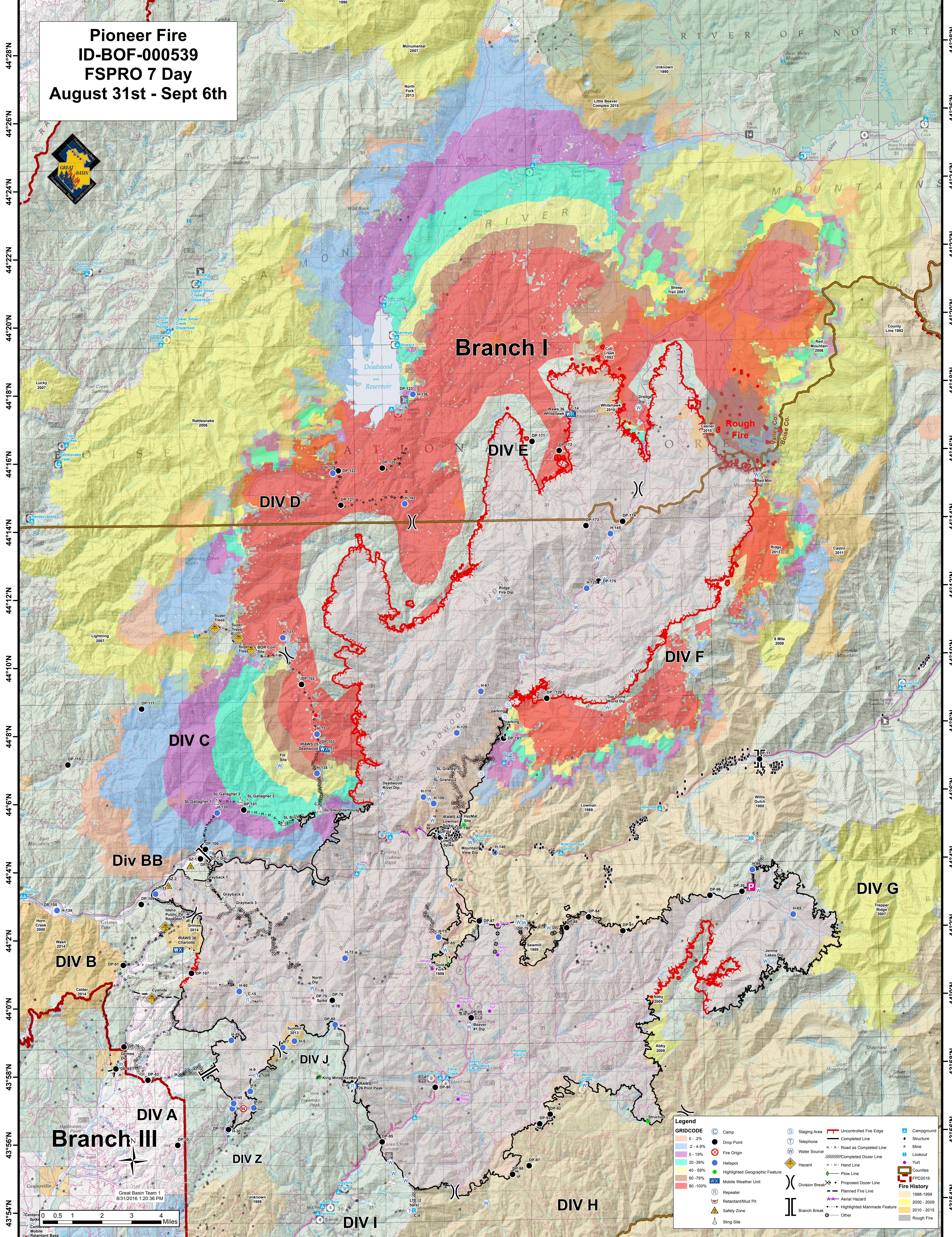


115°54'W 115°52'W 115°50'W 115°48'W 115°46'W 115°44'W 115°42'W 115°40'W 115°38'W 115°36'W 115°34'W 115°32'W 115°30'W 115°28'W 115°26'W 115°24'W 115°22'W 115°20'W 115°18'W

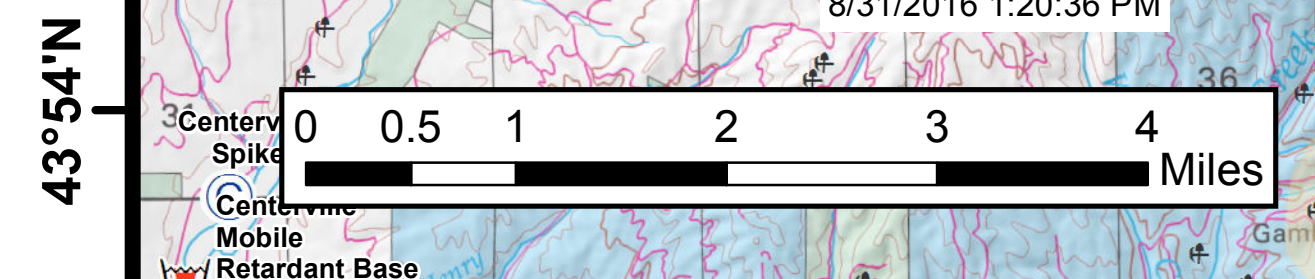
Pioneer Fire
ID-BOF-000539
FSPRO 7 Day
August 31st - Sept 6th



115°54'W 115°52'W 115°50'W 115°48'W 115°46'W 115°44'W 115°42'W 115°40'W 115°38'W 115°36'W 115°34'W 115°32'W 115°30'W 115°28'W 115°26'W 115°24'W 115°22'W 115°20'W 115°18'W

Legend

0 - 2%	● Camp	○ Staging Area	— Uncontrolled Fire Edge	▲ Campground
2 - 4.9%	● Drop Point	○ Completed Line	— Completed Line	● Structure
5 - 19%	● Fire Origin	○ Road as Completed Line	— Retardant/Mud Pit	● Mine
20 - 39%	● Helispot	○ Completed Dozer Line	— Proposed Dozer Line	● Lookout
40 - 59%	● Highlighted Geographic Feature	○ Proposed Fire Line	— Aerial Hazard	● Yurt
60 - 79%	● Highlighted Geographic Feature	○ Planned Fire Line	— Highlighted Manmade Feature	● Counties
80 - 100%	● Highlighted Geographic Feature	○ Highlighted Manmade Feature	○ Other	● FPD2016
	● Mobile Weather Unit			● 1988-1999
	● Repeater			● 2000 - 2009
	● Safety Zone			● 2010 - 2015
	● Sling Site			● Rough Fire



Great Basin Team 1
8/31/2016 1:20:36 PM