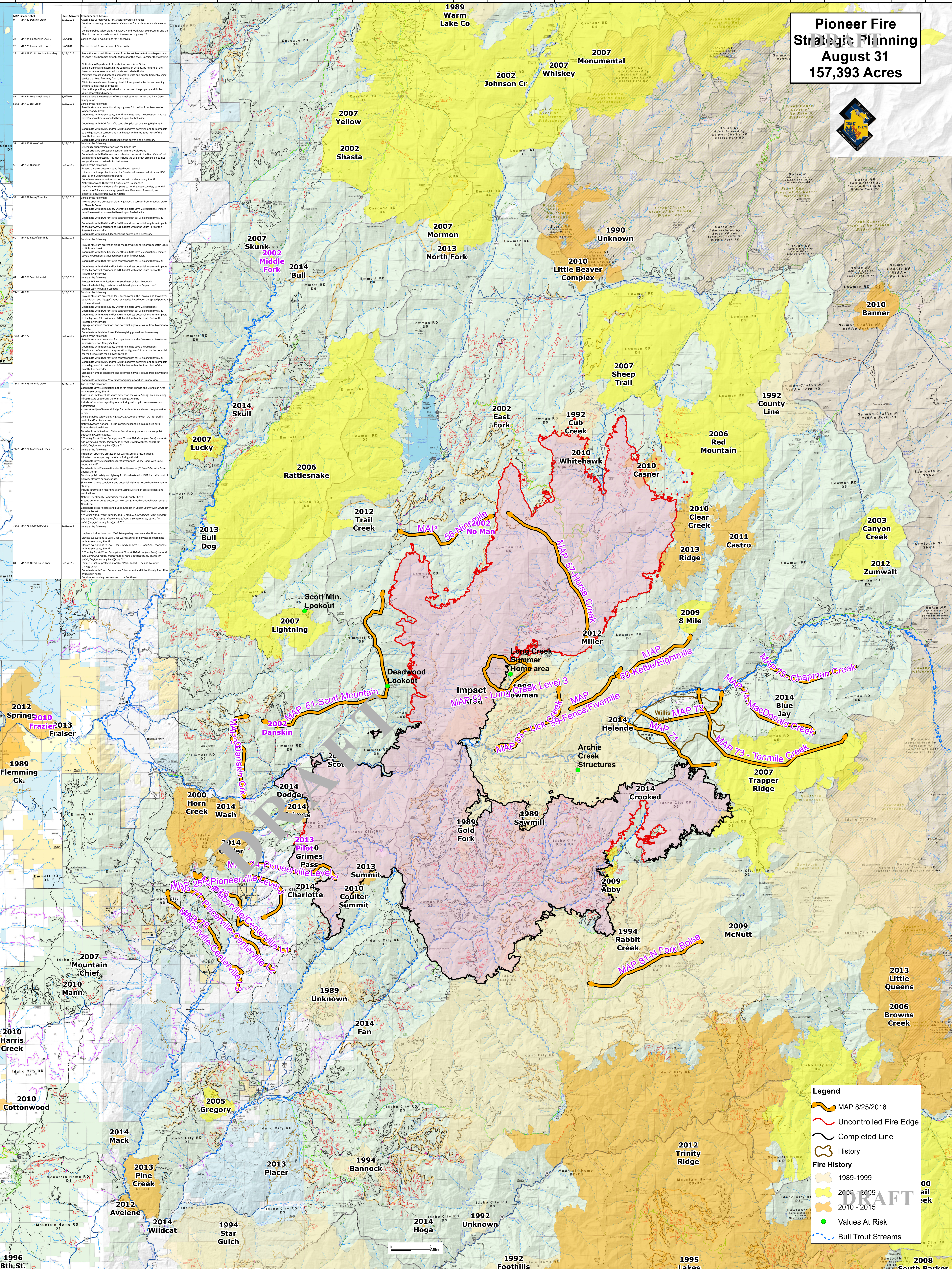


Pioneer Fire Strategic Planning

August 31

157,393 Acres



MAP Project/Label	DOI Authority	Recommended Action
MAP 30 Damsin Creek	03/24/2016	Assess East Carbon Valley for Structural Protection needs. Consider installing larger Gopher holes for public safety and values at risk. Consider public safety along Highway 17 and work with Boise County and the Sheriff to increase road closure to the west on Highway 17.
MAP 31 Horns Fork Level 2	06/02/2016	Consider Level 2 evacuation for Horns Fork.
MAP 32 Horns Fork Level 1	06/02/2016	Consider Level 1 evacuation for Horns Fork.
MAP 38 DL Protection Boundary	07/08/2016	Protection responsibility transfer from Forest Service to Idaho Department of Lands if the boundary becomes established as part of the MAP. Consider the following: Notify Idaho Department of Lands, Southwest Area Office. While planning and executing the evacuation activity, be mindful of the financial value associated with state and private timber. Minimize timber and grazing impacts to the extent possible by using tactics that keep the away from these areas. Minimize impacts to riparian areas by using riparian best management practices and keeping the fire line as small as possible. Request the property and timber value of riparian areas.
MAP 33 Long Creek Level 3	06/02/2016	Consider Level 3 evacuation for Long Creek summer homes and Park Creek campground.
MAP 34 Long Creek	06/02/2016	Consider the following: Develop evacuation routes on the rough line. Assess structure protection needs on Whitetail Road. Coordinate with Boise County Sheriff to install Level 2 evacuation. Install Level 1 evacuation as needed based upon fire behavior. Coordinate with COJ for traffic control or pilot car use along Highway 21. Coordinate with BIAIS and/or BIAI to address potential long term impacts to the Highway 21 corridor and F&E habitat within the South Fork of the Payette River corridor. Coordinate with Idaho Department of Lands if necessary.
MAP 37 Horse Creek	02/03/2016	Consider the following: Develop evacuation routes on the rough line. Assess structure protection needs on Whitetail Road. Coordinate with Boise County Sheriff to install Level 2 evacuation. Install Level 1 evacuation as needed based upon fire behavior. Coordinate with COJ for traffic control or pilot car use along Highway 21. Coordinate with BIAIS and/or BIAI to address potential long term impacts to the Highway 21 corridor and F&E habitat within the South Fork of the Payette River corridor. Coordinate with Idaho Department of Lands if necessary.
MAP 38 Napeville	02/03/2016	Consider the following: Develop evacuation routes on the rough line. Assess structure protection needs on Whitetail Road. Coordinate with Boise County Sheriff to install Level 2 evacuation. Install Level 1 evacuation as needed based upon fire behavior. Coordinate with COJ for traffic control or pilot car use along Highway 21. Coordinate with BIAIS and/or BIAI to address potential long term impacts to the Highway 21 corridor and F&E habitat within the South Fork of the Payette River corridor. Coordinate with Idaho Department of Lands if necessary.
MAP 39 Fennelville	02/03/2016	Consider the following: Develop evacuation routes on the rough line. Assess structure protection needs on Whitetail Road. Coordinate with Boise County Sheriff to install Level 2 evacuation. Install Level 1 evacuation as needed based upon fire behavior. Coordinate with COJ for traffic control or pilot car use along Highway 21. Coordinate with BIAIS and/or BIAI to address potential long term impacts to the Highway 21 corridor and F&E habitat within the South Fork of the Payette River corridor. Coordinate with Idaho Department of Lands if necessary.
MAP 40 Kettle Eight Mile	02/03/2016	Consider the following: Develop evacuation routes on the rough line. Assess structure protection needs on Whitetail Road. Coordinate with Boise County Sheriff to install Level 2 evacuation. Install Level 1 evacuation as needed based upon fire behavior. Coordinate with COJ for traffic control or pilot car use along Highway 21. Coordinate with BIAIS and/or BIAI to address potential long term impacts to the Highway 21 corridor and F&E habitat within the South Fork of the Payette River corridor. Coordinate with Idaho Department of Lands if necessary.
MAP 41 Scott Mountain	02/03/2016	Consider the following: Develop evacuation routes on the rough line. Assess structure protection needs on Whitetail Road. Coordinate with Boise County Sheriff to install Level 2 evacuation. Install Level 1 evacuation as needed based upon fire behavior. Coordinate with COJ for traffic control or pilot car use along Highway 21. Coordinate with BIAIS and/or BIAI to address potential long term impacts to the Highway 21 corridor and F&E habitat within the South Fork of the Payette River corridor. Coordinate with Idaho Department of Lands if necessary.
MAP 42 Scott Mountain	02/03/2016	Consider the following: Develop evacuation routes on the rough line. Assess structure protection needs on Whitetail Road. Coordinate with Boise County Sheriff to install Level 2 evacuation. Install Level 1 evacuation as needed based upon fire behavior. Coordinate with COJ for traffic control or pilot car use along Highway 21. Coordinate with BIAIS and/or BIAI to address potential long term impacts to the Highway 21 corridor and F&E habitat within the South Fork of the Payette River corridor. Coordinate with Idaho Department of Lands if necessary.
MAP 43 Tenmile Creek	02/03/2016	Consider the following: Develop evacuation routes on the rough line. Assess structure protection needs on Whitetail Road. Coordinate with Boise County Sheriff to install Level 2 evacuation. Install Level 1 evacuation as needed based upon fire behavior. Coordinate with COJ for traffic control or pilot car use along Highway 21. Coordinate with BIAIS and/or BIAI to address potential long term impacts to the Highway 21 corridor and F&E habitat within the South Fork of the Payette River corridor. Coordinate with Idaho Department of Lands if necessary.
MAP 44 Macdonald Creek	02/03/2016	Consider the following: Develop evacuation routes on the rough line. Assess structure protection needs on Whitetail Road. Coordinate with Boise County Sheriff to install Level 2 evacuation. Install Level 1 evacuation as needed based upon fire behavior. Coordinate with COJ for traffic control or pilot car use along Highway 21. Coordinate with BIAIS and/or BIAI to address potential long term impacts to the Highway 21 corridor and F&E habitat within the South Fork of the Payette River corridor. Coordinate with Idaho Department of Lands if necessary.
MAP 45 Chapman Creek	02/03/2016	Consider the following: Develop evacuation routes on the rough line. Assess structure protection needs on Whitetail Road. Coordinate with Boise County Sheriff to install Level 2 evacuation. Install Level 1 evacuation as needed based upon fire behavior. Coordinate with COJ for traffic control or pilot car use along Highway 21. Coordinate with BIAIS and/or BIAI to address potential long term impacts to the Highway 21 corridor and F&E habitat within the South Fork of the Payette River corridor. Coordinate with Idaho Department of Lands if necessary.
MAP 46 Tenmile Creek	02/03/2016	Consider the following: Develop evacuation routes on the rough line. Assess structure protection needs on Whitetail Road. Coordinate with Boise County Sheriff to install Level 2 evacuation. Install Level 1 evacuation as needed based upon fire behavior. Coordinate with COJ for traffic control or pilot car use along Highway 21. Coordinate with BIAIS and/or BIAI to address potential long term impacts to the Highway 21 corridor and F&E habitat within the South Fork of the Payette River corridor. Coordinate with Idaho Department of Lands if necessary.
MAP 47 Fennelville	02/03/2016	Consider the following: Develop evacuation routes on the rough line. Assess structure protection needs on Whitetail Road. Coordinate with Boise County Sheriff to install Level 2 evacuation. Install Level 1 evacuation as needed based upon fire behavior. Coordinate with COJ for traffic control or pilot car use along Highway 21. Coordinate with BIAIS and/or BIAI to address potential long term impacts to the Highway 21 corridor and F&E habitat within the South Fork of the Payette River corridor. Coordinate with Idaho Department of Lands if necessary.
MAP 48 Fennelville	02/03/2016	Consider the following: Develop evacuation routes on the rough line. Assess structure protection needs on Whitetail Road. Coordinate with Boise County Sheriff to install Level 2 evacuation. Install Level 1 evacuation as needed based upon fire behavior. Coordinate with COJ for traffic control or pilot car use along Highway 21. Coordinate with BIAIS and/or BIAI to address potential long term impacts to the Highway 21 corridor and F&E habitat within the South Fork of the Payette River corridor. Coordinate with Idaho Department of Lands if necessary.
MAP 49 Fennelville	02/03/2016	Consider the following: Develop evacuation routes on the rough line. Assess structure protection needs on Whitetail Road. Coordinate with Boise County Sheriff to install Level 2 evacuation. Install Level 1 evacuation as needed based upon fire behavior. Coordinate with COJ for traffic control or pilot car use along Highway 21. Coordinate with BIAIS and/or BIAI to address potential long term impacts to the Highway 21 corridor and F&E habitat within the South Fork of the Payette River corridor. Coordinate with Idaho Department of Lands if necessary.
MAP 50 Fennelville	02/03/2016	Consider the following: Develop evacuation routes on the rough line. Assess structure protection needs on Whitetail Road. Coordinate with Boise County Sheriff to install Level 2 evacuation. Install Level 1 evacuation as needed based upon fire behavior. Coordinate with COJ for traffic control or pilot car use along Highway 21. Coordinate with BIAIS and/or BIAI to address potential long term impacts to the Highway 21 corridor and F&E habitat within the South Fork of the Payette River corridor. Coordinate with Idaho Department of Lands if necessary.

Legend

- MAP 8/25/2016
- Uncontrolled Fire Edge
- Completed Line
- History
- Fire History**
 - 1989-1999
 - 2000-2009
 - 2010-2015
- Values At Risk
- Bull Trout Streams

