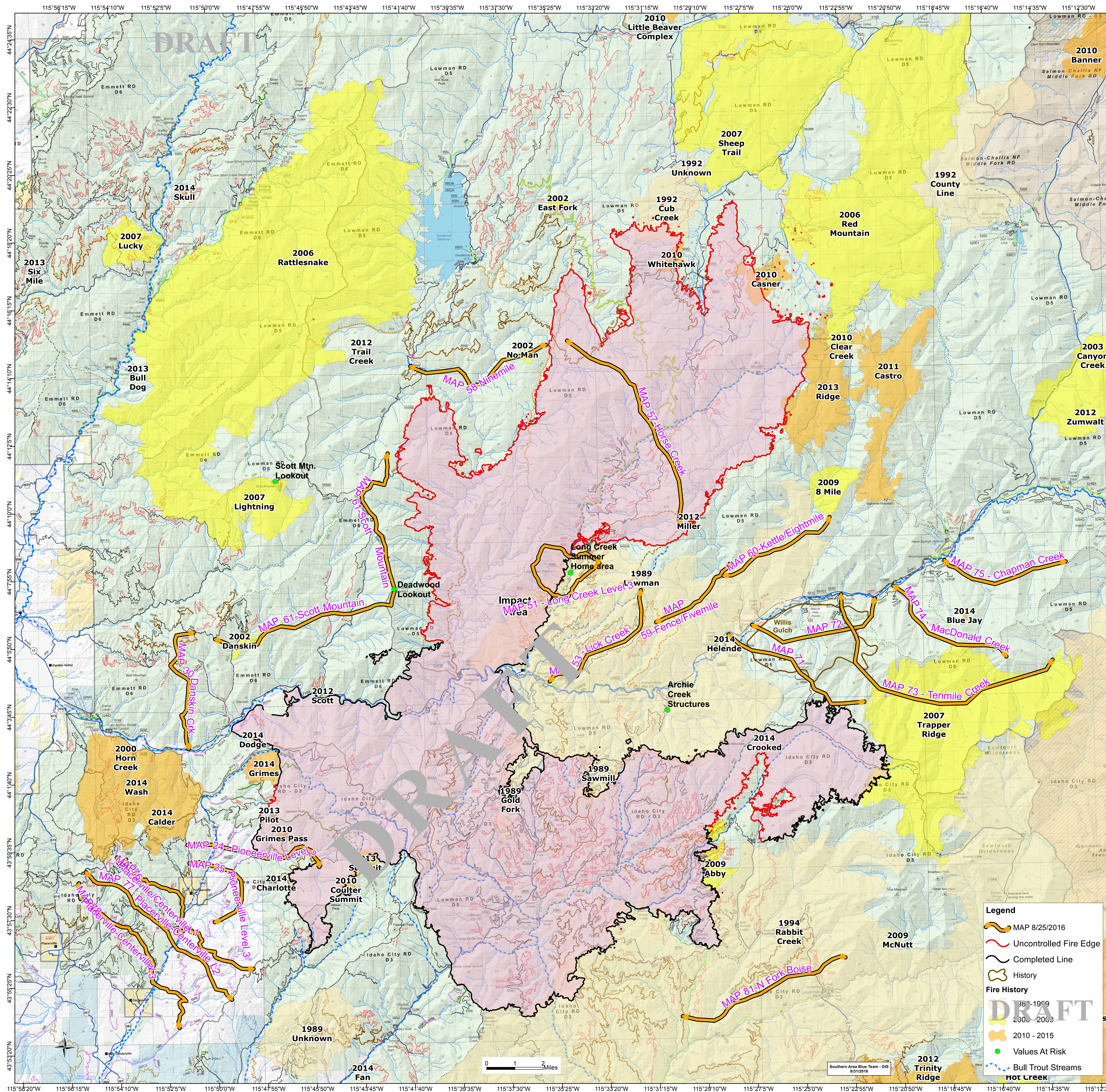


Pioneer Fire Strategic Planning

August 31

157,393 Acres



MAP	Shape/Label	Date Activated	Recommended Actions
5	MAP 30 Danskin Creek	8/16/2016	Consider assessing Larger Garden Valley area for structure protection needs. Consider assessing Larger Garden Valley area for public safety and values at risk. Consider public safety along Highway 17 and Work with Boise County and the Sheriff to increase road closure to the west on Highway 17. Consider Level 2 evacuations for Pioneerville.
24	MAP 24 Pioneerville Level 2	8/6/2016	Consider Level 2 evacuations for Pioneerville.
25	MAP 25 Pioneerville Level 3	8/6/2016	Consider Level 3 evacuations for Pioneerville.
28	MAP 28 IDL Protection Boundary	8/28/2016	Protection responsibilities transfer from Forest Service to Idaho Department of Lands if fire becomes established west of this MAP. Consider the following: Notify Idaho Department of Lands Southwest Area Office While planning and executing fire suppression actions, be mindful of the financial values associated with state and private timber; Minimize threats and potential impacts to state and private timber by using tactics that keep fire away from these areas; Minimize area burned by using direct fire suppression tactics and keeping the fire size as small as practical; Use tactics, practices, and behavior that respect the property and timber value of forestland owners.
51	MAP 51 Long Creek Level 3	8/6/2016	Consider Level 3 evacuations of Long Creek summer homes and Park Creek campground.
59/2	MAP 53 Lick Creek	8/28/2016	Consider the following: Provide structure protection along Highway 21 corridor from Lowman to Whangbodie Creek. Coordinate with Boise County Sheriff to initiate Level 2 evacuations. Initiate Level 3 evacuations as needed based upon fire behavior.
57	MAP 57 Horse Creek	8/28/2016	Coordinate with IDOT for traffic control or pilot car use along Highway 21. Coordinate with READS and/or BAEI to address potential long term impacts to the highway 21 corridor and T&E habitat within the South Fork of the Payette River corridor. Coordinate with Idaho if deenergizing powerlines is necessary.
58	MAP 58 Ninemile	8/28/2016	Consider the following: Disengage suppression efforts on the Rough Fire. Assess structure protection needs on Whitewalk lookout. Coordinate with READS to ensure fisheries concerns in the Bear Valley Creek drainage are addressed. This may include the use of fish screens on pumps and/or the use of netting for helicopters. Expand the area closure around Deadwood reservoir. Initiate structure protection plan for Deadwood reservoir admin sites (BOR and FS) and Deadwood campground. Coordinate with READS and/or BAEI to address potential long term impacts to the highway 21 corridor and T&E habitat within the South Fork of the Payette River corridor. Notify Idaho Fish and Game of impacts to hunting opportunities, potential impacts to Kulanee spawning operation at Deadwood Reservoir, and potential closure of Deadwood Airstrip.
59	MAP 59 Fence/Ninemile	8/28/2016	Consider the following: Provide structure protection along Highway 21 corridor from Meadow Creek to Fivemile Creek. Coordinate with Boise County Sheriff to initiate Level 2 evacuations. Initiate Level 3 evacuations as needed based upon fire behavior. Coordinate with IDOT for traffic control or pilot car use along Highway 21. Coordinate with READS and/or BAEI to address potential long term impacts to the highway 21 corridor and T&E habitat within the South Fork of the Payette River corridor. Coordinate with Idaho if deenergizing powerlines is necessary.
60	MAP 60 Kettle/Eightmile	8/28/2016	Consider the following: Provide structure protection along the Highway 21 corridor from Kettle Creek to Eightmile Creek. Coordinate with Boise County Sheriff to initiate Level 2 evacuations. Initiate Level 3 evacuations as needed based upon fire behavior. Coordinate with IDOT for traffic control or pilot car use along Highway 21. Coordinate with READS and/or BAEI to address potential long term impacts to the highway 21 corridor and T&E habitat within the South Fork of the Payette River corridor.
61	MAP 61 Scott Mountain	8/28/2016	Consider the following: Protect 608 communications site southeast of Scott Mountain. Protect selected, high resistance Whitebark pine aka "super trees". Protect Scott Mountain Lookout.
71/2	MAP 71	8/28/2016	Consider the following: Provide structure protection for Upper Lowman, the Ten Axe and Two Haven subdivisions, and Alager's Ranch as needed based upon the spread potential to the northeast. Coordinate with Boise County Sheriff to initiate Level 2 evacuations. Coordinate with IDOT for traffic control or pilot car use along Highway 21. Coordinate with READS and/or BAEI to address potential long term impacts to the highway 21 corridor and T&E habitat within the South Fork of the Payette River corridor. Signage on smoke conditions and potential highway closure from Lowman to Stanley. Coordinate with Idaho Power if deenergizing powerlines is necessary.
72/2	MAP 72	8/28/2016	Consider the following: Provide structure protection for Upper Lowman, the Ten Axe and Two Haven subdivisions, and Alager's Ranch. Coordinate with Boise County Sheriff to initiate Level 3 evacuations. Reevaluate containment strategy north of Highway 21 based on the potential for the fire to cross the Highway corridor. Coordinate with IDOT for traffic control or pilot car use along Highway 21. Coordinate with READS and/or BAEI to address potential long term impacts to the highway 21 corridor and T&E habitat within the South Fork of the Payette River corridor. Signage on smoke conditions and potential highway closure from Lowman to Stanley. Coordinate with Idaho Power if deenergizing powerlines is necessary.
73/2	MAP 73 Tenmile Creek	8/28/2016	Consider the following: Coordinate Level 1 evaluation notice for Warm Springs and Grandjean Area with Boise County Sheriff. Assess and implement structure protection for Warm Springs Area, including infrastructure supporting the Warm Springs Air strip. Include information regarding Warm Springs Airstrip in press releases and notifications. Assess Grandjean/Sawtooth lodge for public safety and structure protection needs. Consider public safety along Highway 21. Coordinate with IDOT for traffic control and/or pilot car use. Notify Sawtooth National Forest for any press releases or public outreach in Custer County. *** Valley Road (Warm Springs) and FS road 524 (Grandjean Road) are both one-way right roads. If lower end of road is compromised, egress for public/firefighters may be difficult ***
74/2	MAP 74 MacDonald Creek	8/28/2016	Consider the following: Implement structure protection for Warm Springs Area, including infrastructure supporting the Warm Springs Air strip. Coordinate Level 2 evacuations for Grandjean Area (FS Road 524), coordinate with Boise County Sheriff. Coordinate Level 2 evacuations for Grandjean Area (FS Road 524) with Boise County Sheriff. Consider public safety on Highway 21. Coordinate with IDOT for traffic control, highway closures or pilot car use. Signage on smoke conditions and potential highway closure from Lowman to Stanley. Include information regarding Warm Springs Airstrip in press releases and notifications. Notify Custer County Commissioners and County Sheriff. Expand area closure to encompass western Sawtooth National Forest south of Grandjean. Coordinate press releases and public outreach in Custer County with Sawtooth National Forest. *** Valley Road (Warm Springs) and FS road 524 (Grandjean Road) are both one-way right roads. If lower end of road is compromised, egress for public/firefighters may be difficult ***
75/2	MAP 75 Chapman Creek	8/28/2016	Consider the following: Implement all actions from MAP 74 regarding closures and notifications. Evacuate to Level 3 for Grandjean Area (FS Road 524), coordinate with Boise County Sheriff. Evacuate to Level 3 for Grandjean Area (FS Road 524), coordinate with Boise County Sheriff. *** Valley Road (Warm Springs) and FS road 524 (Grandjean Road) are both one-way right roads. If lower end of road is compromised, egress for public/firefighters may be difficult ***
81	MAP 81 N Fork Boise River	8/28/2016	Consider the following: Initiate structure protection for Deer Park, Robert L Lee and Fourmile Campgrounds. Coordinate with Forest Service Law Enforcement and Boise County Sheriff for evacuation needs. Consider expanding closure area to the Southeast.

Legend

- MAP 8/25/2016
- Uncontrolled Fire Edge
- Completed Line
- History

Fire History

- 1989 - 1999
- 2000 - 2009
- 2010 - 2015

Values At Risk

- Green dot

Bull Trout Streams

- Blue line

HOT CREEK

