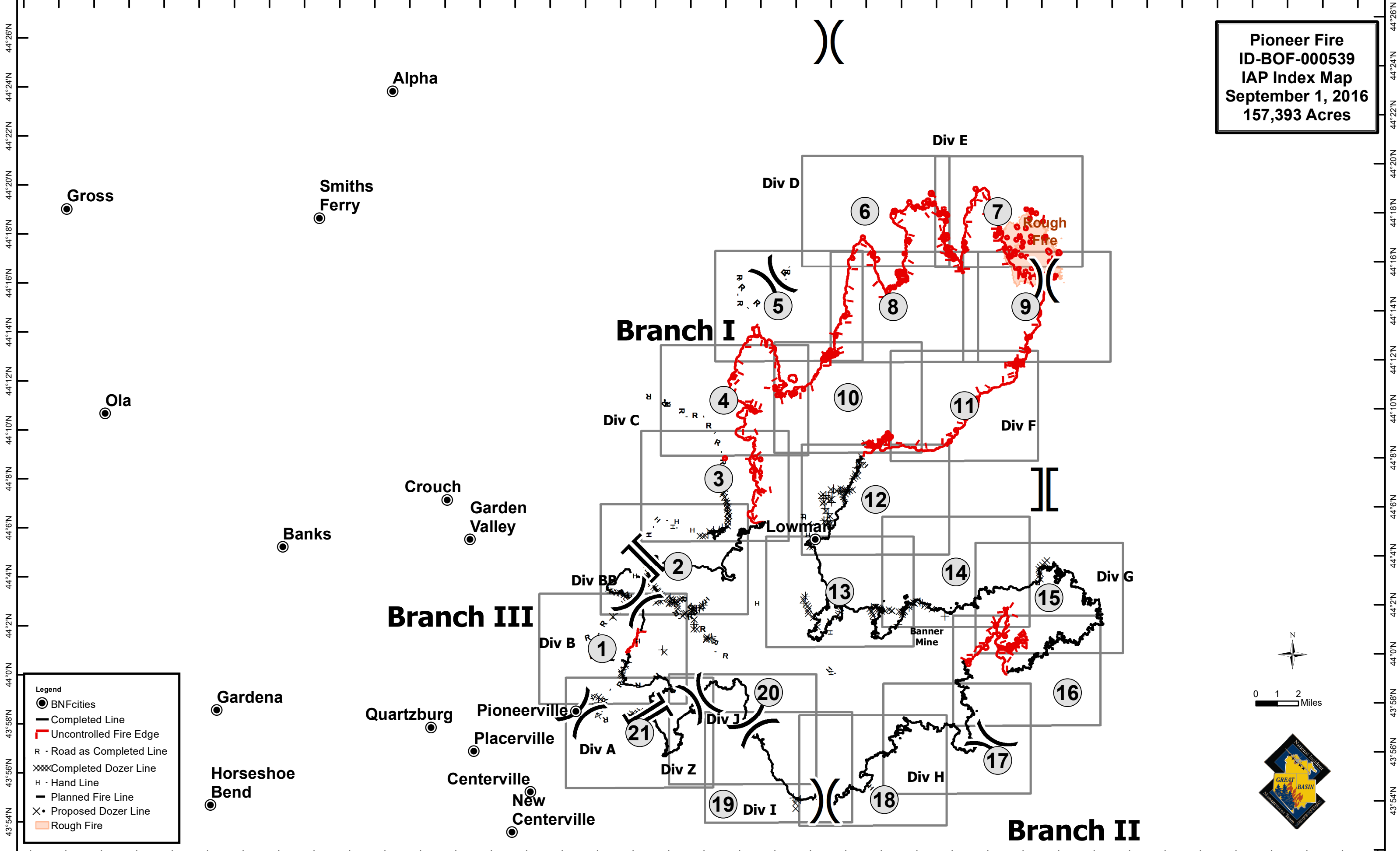


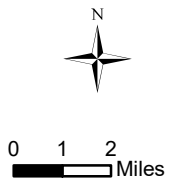
116°20'W 116°16'W 116°12'W 116°8'W 116°6'W 116°4'W 116°2'W 115°58'W 115°54'W 115°50'W 115°46'W 115°42'W 115°38'W 115°34'W 115°30'W 115°26'W 115°22'W 115°18'W 115°14'W 115°10'W 115°8'W 115°6'W



**Pioneer Fire**  
**ID-BOF-000539**  
**IAP Index Map**  
**September 1, 2016**  
**157,393 Acres**

**Legend**

- BNFcities
- Completed Line
- Uncontrolled Fire Edge
- R · Road as Completed Line
- xxx Completed Dozer Line
- H · Hand Line
- - - Planned Fire Line
- X · Proposed Dozer Line
- Rough Fire



116°22'W 116°18'W 116°14'W 116°10'W 116°8'W 116°6'W 116°4'W 116°2'W 116°0'W 115°58'W 115°54'W 115°50'W 115°46'W 115°42'W 115°38'W 115°34'W 115°30'W 115°26'W 115°22'W 115°18'W 115°14'W 115°10'W 115°8'W 115°6'W