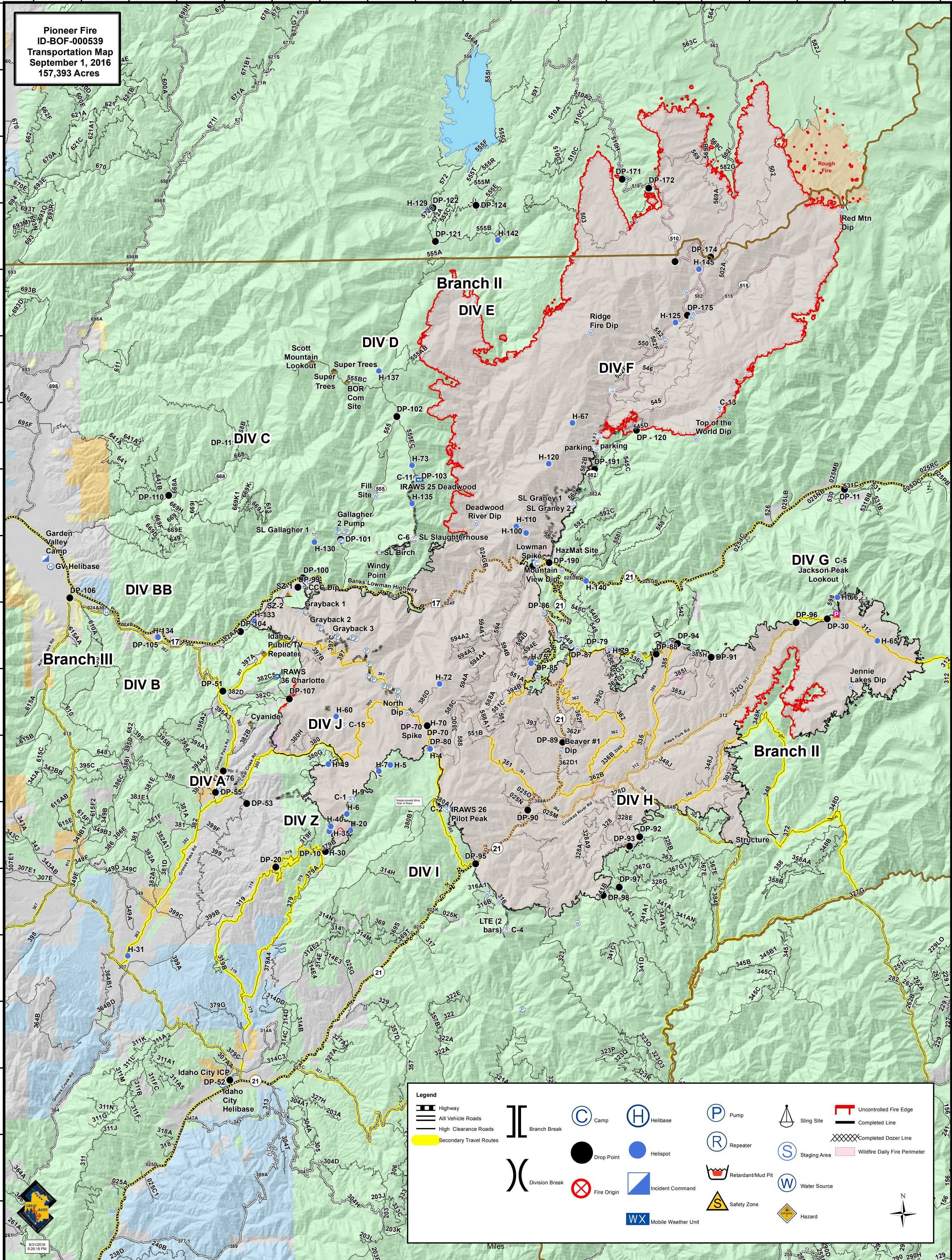


115°56'0"W 115°52'0"W 115°48'0"W 115°44'0"W 115°40'0"W 115°36'0"W 115°32'0"W 115°28'0"W 115°24'0"W 115°20'0"W

Pioneer Fire
ID-BOF-000539
Transportation Map
September 1, 2016
157,393 Acres



44°22'0"N
44°20'0"N
44°18'0"N
44°16'0"N
44°14'0"N
44°12'0"N
44°10'0"N
44°08'0"N
44°06'0"N
44°04'0"N
44°02'0"N
44°00'0"N
43°58'0"N
43°56'0"N
43°54'0"N
43°52'0"N
43°50'0"N
43°48'0"N
43°46'0"N
43°44'0"N

115°58'0"W 115°54'0"W 115°50'0"W 115°46'0"W 115°42'0"W 115°38'0"W 115°34'0"W 115°30'0"W 115°26'0"W 115°22'0"W

Legend

Highway	Branch Break	Camp	Helibase	Pump	Sling Site	Uncontrolled Fire Edge
All Vehicle Roads	Division Break	Drop Point	Helispot	Repeater	Staging Area	Completed Line
High Clearance Roads	Fire Origin	Incident Command	Retardant/Mud Pit	Water Source	Completed Dozer Line	Wildfire Daily Fire Perimeter
Secondary Travel Routes	Safety Zone	Mobile Weather Unit	Hazard			



Miles

8/31/2016 9:26:18 PM