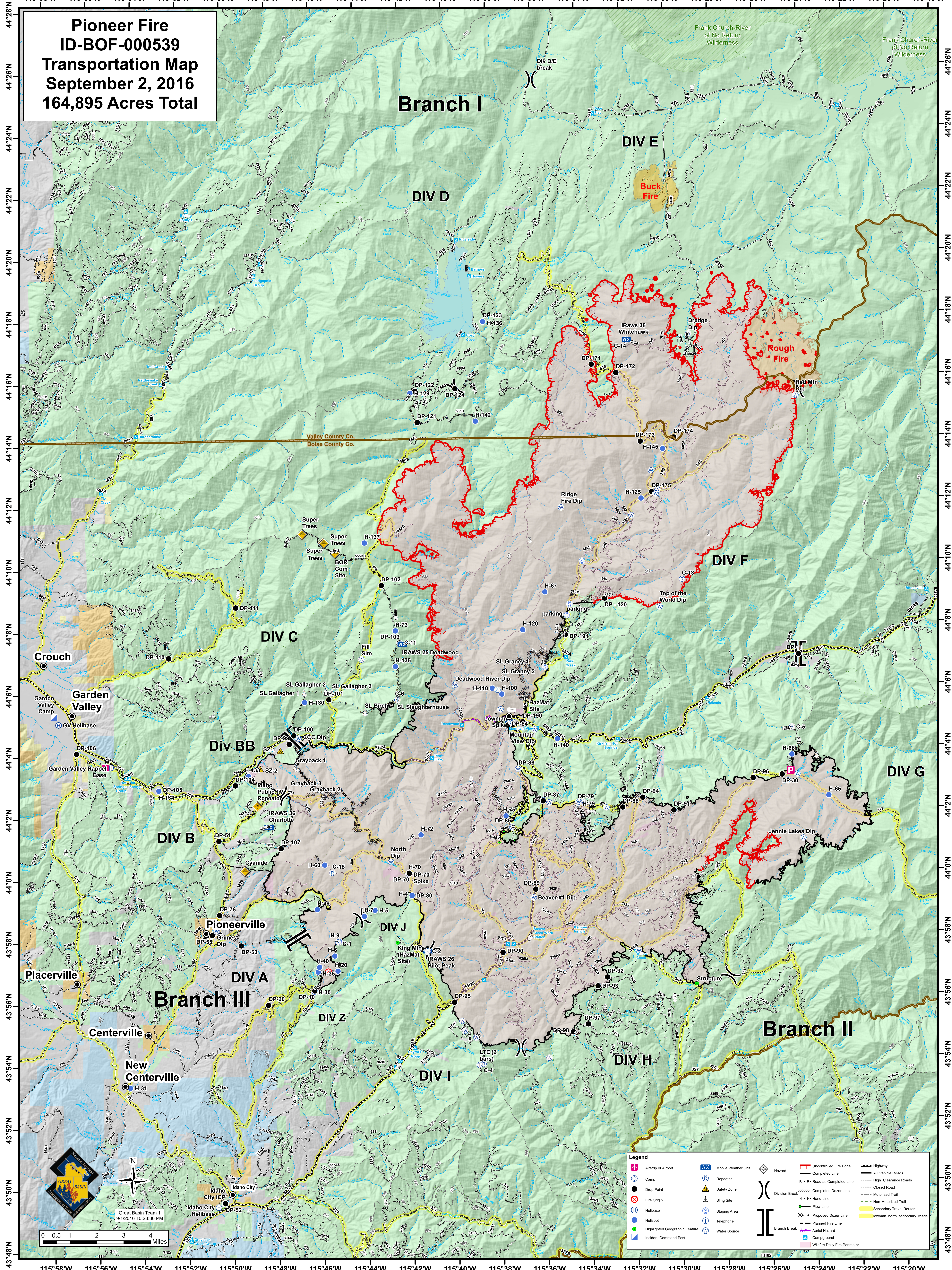


Pioneer Fire
ID-BOF-000539
Transportation Map
September 2, 2016
164,895 Acres Total



Branch I

DIV E

DIV D

Buck Fire

Rough Fire

DIV F

DIV C

Div BB

DIV B

DIV G

Pioneerville

DIV J

Branch III

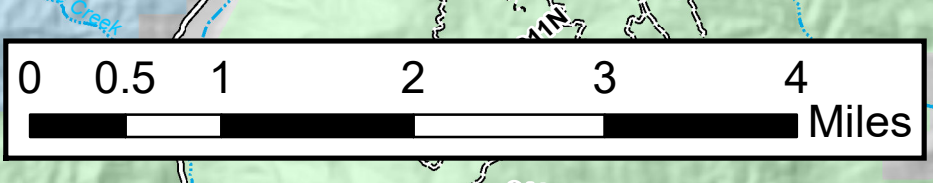
DIV Z

DIV I

DIV H

Branch II

| Legend | |
|--------|---------------------------------|
| | Airstrip or Airport |
| | Camp |
| | Drop Point |
| | Fire Origin |
| | Helibase |
| | Helispot |
| | Highlighted Geographic Feature |
| | Incident Command Post |
| | Mobile Weather Unit |
| | Repeater |
| | Safety Zone |
| | Sling Site |
| | Staging Area |
| | Telephone |
| | Water Source |
| | Hazard |
| | Uncontrolled Fire Edge |
| | Completed Line |
| | High Clearance Road |
| | Closed Road |
| | Motorized Trail |
| | Non-Motorized Trail |
| | Secondary Travel Routes |
| | Lowman, north, secondary, roads |
| | Completed Dozer Line |
| | Proposed Dozer Line |
| | Planned Fire Line |
| | Aerial Hazard |
| | Campground |
| | Wildfire Daily Fire Perimeter |



Great Basin Team 1
 9/1/2016 10:28:30 PM

115°58'W 115°56'W 115°54'W 115°52'W 115°50'W 115°48'W 115°46'W 115°44'W 115°42'W 115°40'W 115°38'W 115°36'W 115°34'W 115°32'W 115°30'W 115°28'W 115°26'W 115°24'W 115°22'W 115°20'W

44°28'N 44°26'N 44°24'N 44°22'N 44°20'N 44°18'N 44°16'N 44°14'N 44°12'N 44°10'N 44°8'N 44°6'N 44°4'N 44°2'N 44°0'N 43°58'N 43°56'N 43°54'N 43°52'N 43°50'N 43°48'N