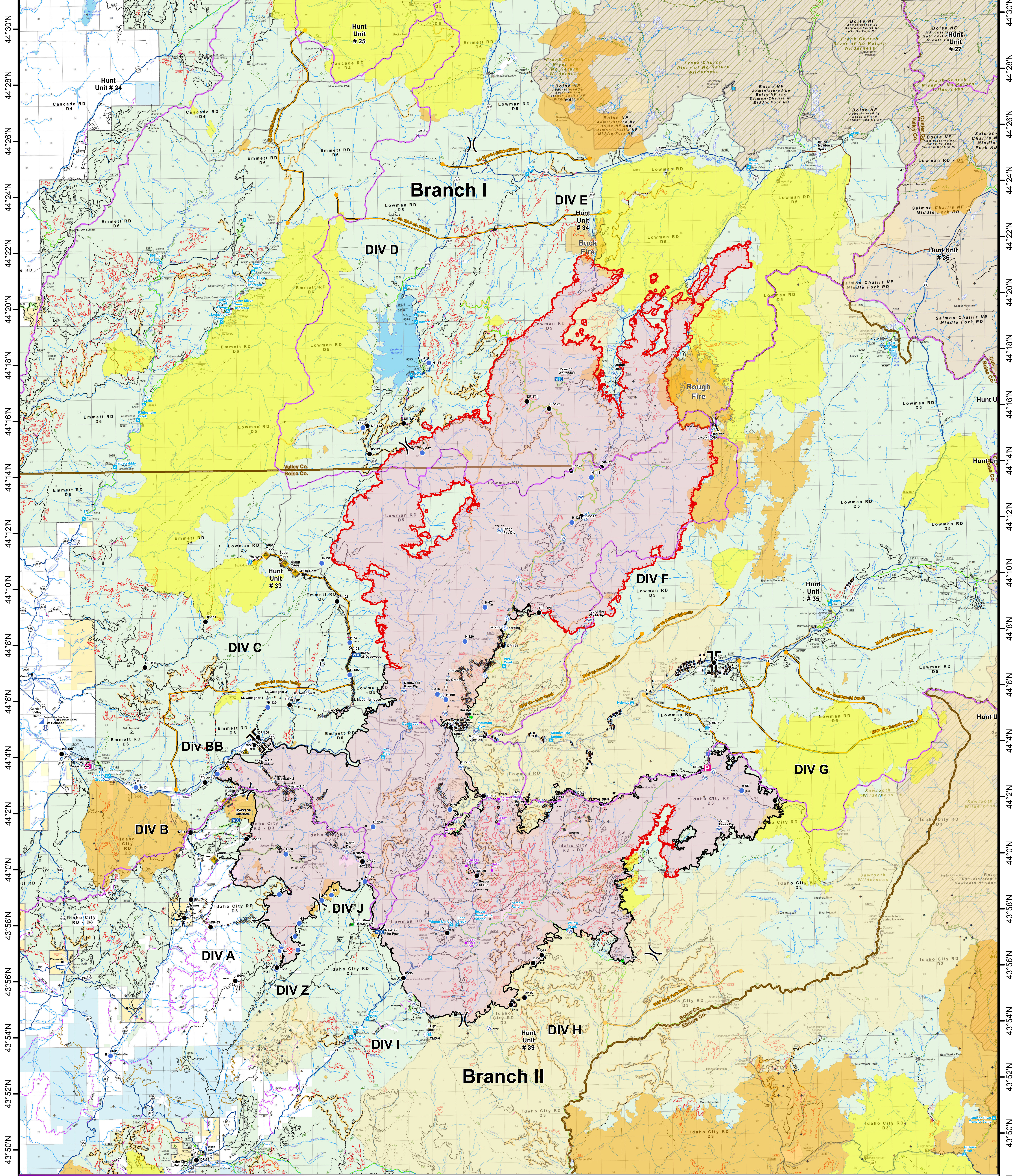


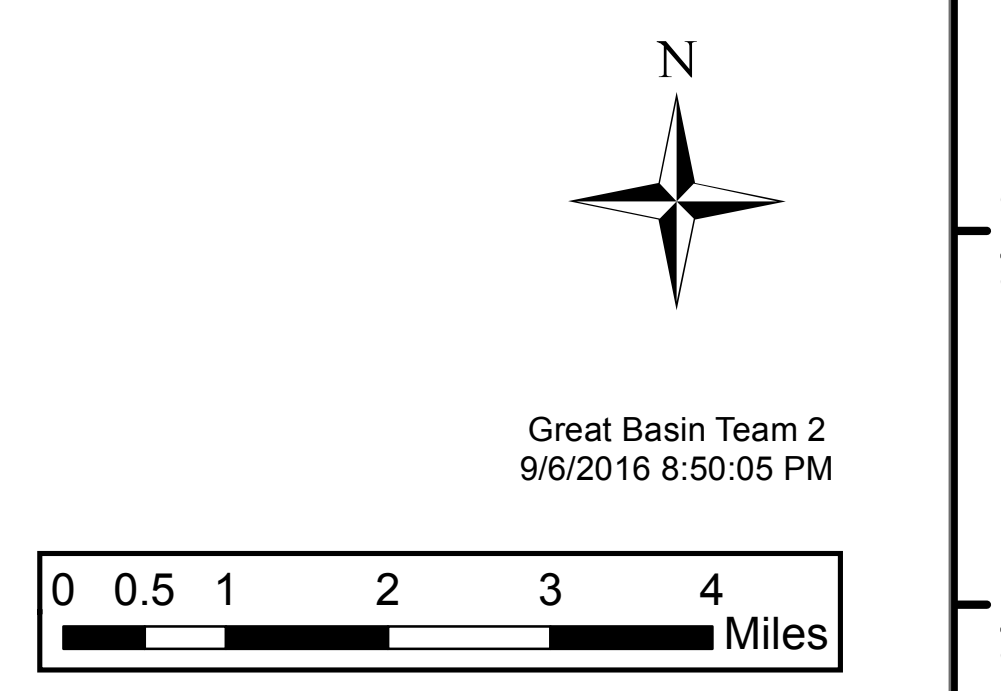
115°58'W 115°56'W 115°54'W 115°52'W 115°50'W 115°48'W 115°46'W 115°44'W 115°42'W 115°40'W 115°38'W 115°36'W 115°34'W 115°32'W 115°30'W 115°28'W 115°26'W 115°24'W 115°22'W 115°20'W 115°18'W 115°16'W 115°14'W 115°12'W 115°10'W



**Planning**  
**Planning Map**  
Pioneer Fire  
ID-BOF-000539  
September 7, 2016  
181,174 Acres



Uncontrolled Fire Edge	Airstrip or Airport	Staging Area	Structure	Fire History
Completed Line	Camp	Telephone	Mine	1989-1999
Road as Completed Line	Drop Point	Water Source	Lookout	2000-2009
Completed Dozer Line	Fire Origin	Hazard	Yurt	2010-2015
Flow Line	Helibase	Incident Command Post	Campground	Buck Fire
Proposed Dozer Line	Helispot	Mobile Weather Unit	Game_Management_Units	Rough Fire
Planned Fire Line	Highlighted Geographic Feature	Repeater	Mgmt Action Points	
Aerial Hazard	Incident Command Post	Safety Zone		
Highlighted Manmade Feature	Sling Site			
Other				
Division Break				
Branch Break				



115°58'W 115°56'W 115°54'W 115°52'W 115°50'W 115°48'W 115°46'W 115°44'W 115°42'W 115°40'W 115°38'W 115°36'W 115°34'W 115°32'W 115°30'W 115°28'W 115°26'W 115°24'W 115°22'W 115°20'W 115°18'W 115°16'W 115°14'W 115°12'W