

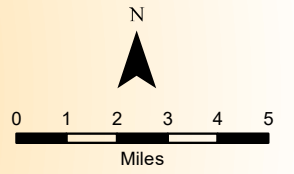


Fire Closure and Burned Area

Pioneer Fire

09/13/2016

186,192 Acres



PioneerFireClosureLineV8

Other

STATUS

Closed Road/Trail/River along closure area boundary

Open Road/Trail along closure area boundary

Closure boundary following edge of burn scar

Closure boundary following ridgeline

County/State Hwy - Open

All Vehicle Roads

Highways

Uncontrolled Fire Edge

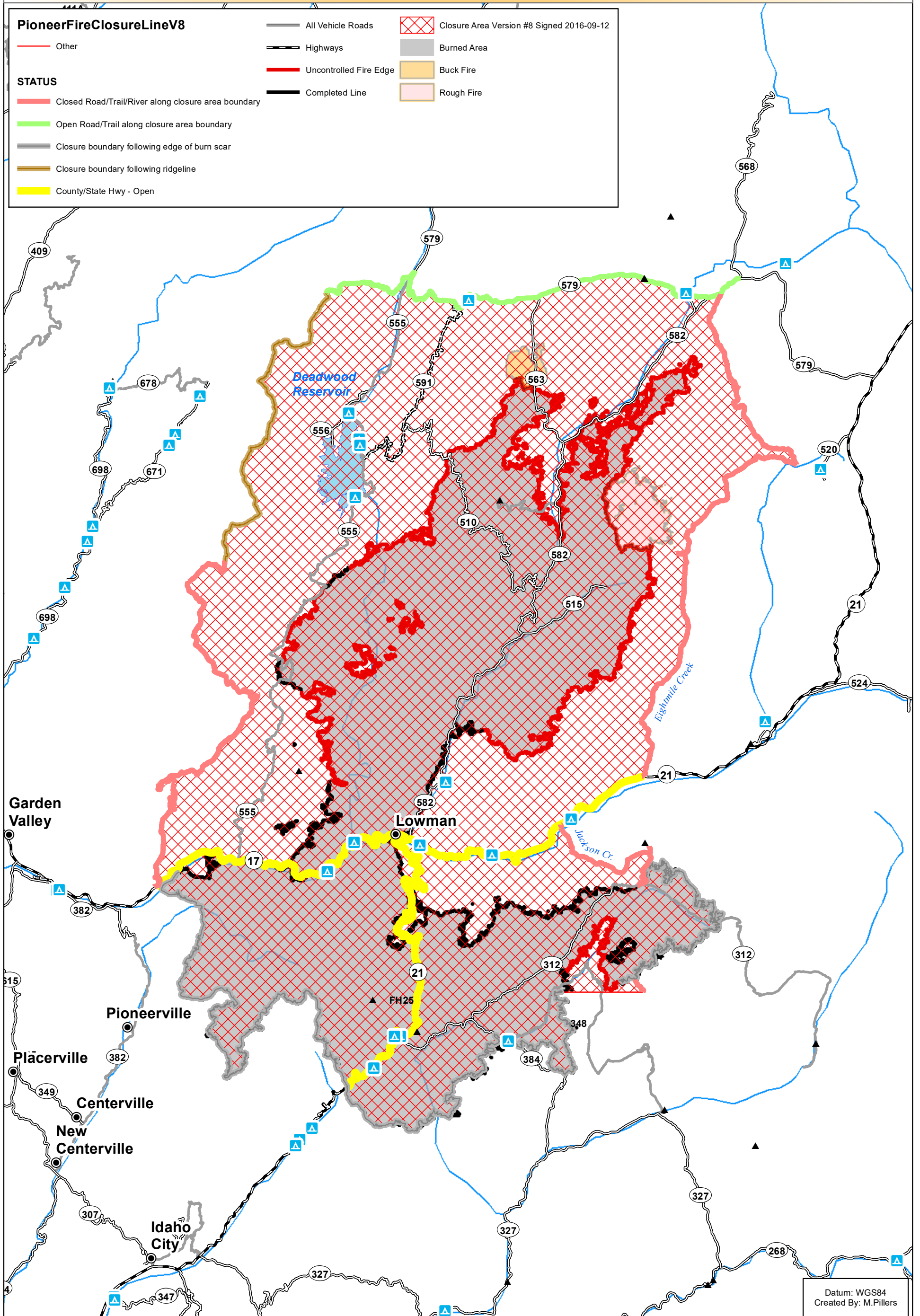
Completed Line

Closure Area Version #8 Signed 2016-09-12

Burned Area

Buck Fire

Rough Fire



Datum: WGS84
Created By: M.Pillers