

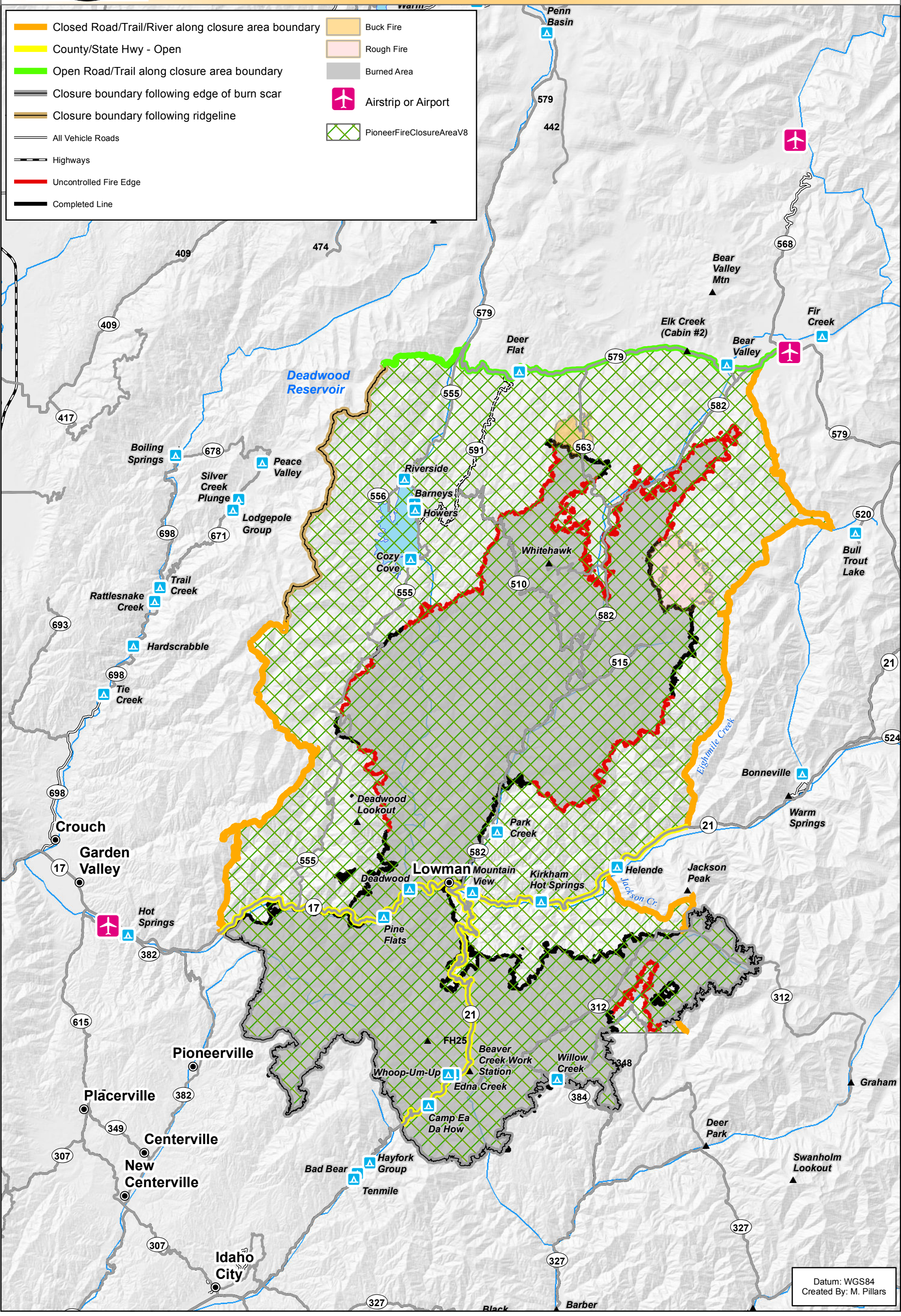
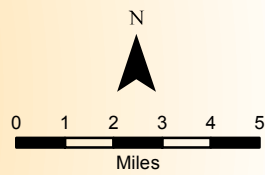


Fire Closure and Burned Area

Pioneer Fire

09/23/2016

188,404 Acres



- | | | | |
|--|---|--|--------------------------|
| | Closed Road/Trail/River along closure area boundary | | Buck Fire |
| | County/State Hwy - Open | | Rough Fire |
| | Open Road/Trail along closure area boundary | | Burned Area |
| | Closure boundary following edge of burn scar | | Airstrip or Airport |
| | Closure boundary following ridgeline | | PioneerFireClosureAreaV8 |
| | All Vehicle Roads | | |
| | Highways | | |
| | Uncontrolled Fire Edge | | |
| | Completed Line | | |

Datum: WGS84
Created By: M. Pillars