

115°48'W 115°46'W 115°44'W 115°42'W 115°40'W 115°38'W 115°36'W 115°34'W 115°32'W 115°30'W 115°28'W 115°26'W 115°24'W 115°22'W 115°20'W 115°18'W 115°16'W

44°26'N
44°24'N
44°22'N
44°20'N
44°18'N
44°16'N
44°14'N
44°12'N
44°10'N
44°8'N

Transportation Map

Pioneer Fire

ID-BOF-000539

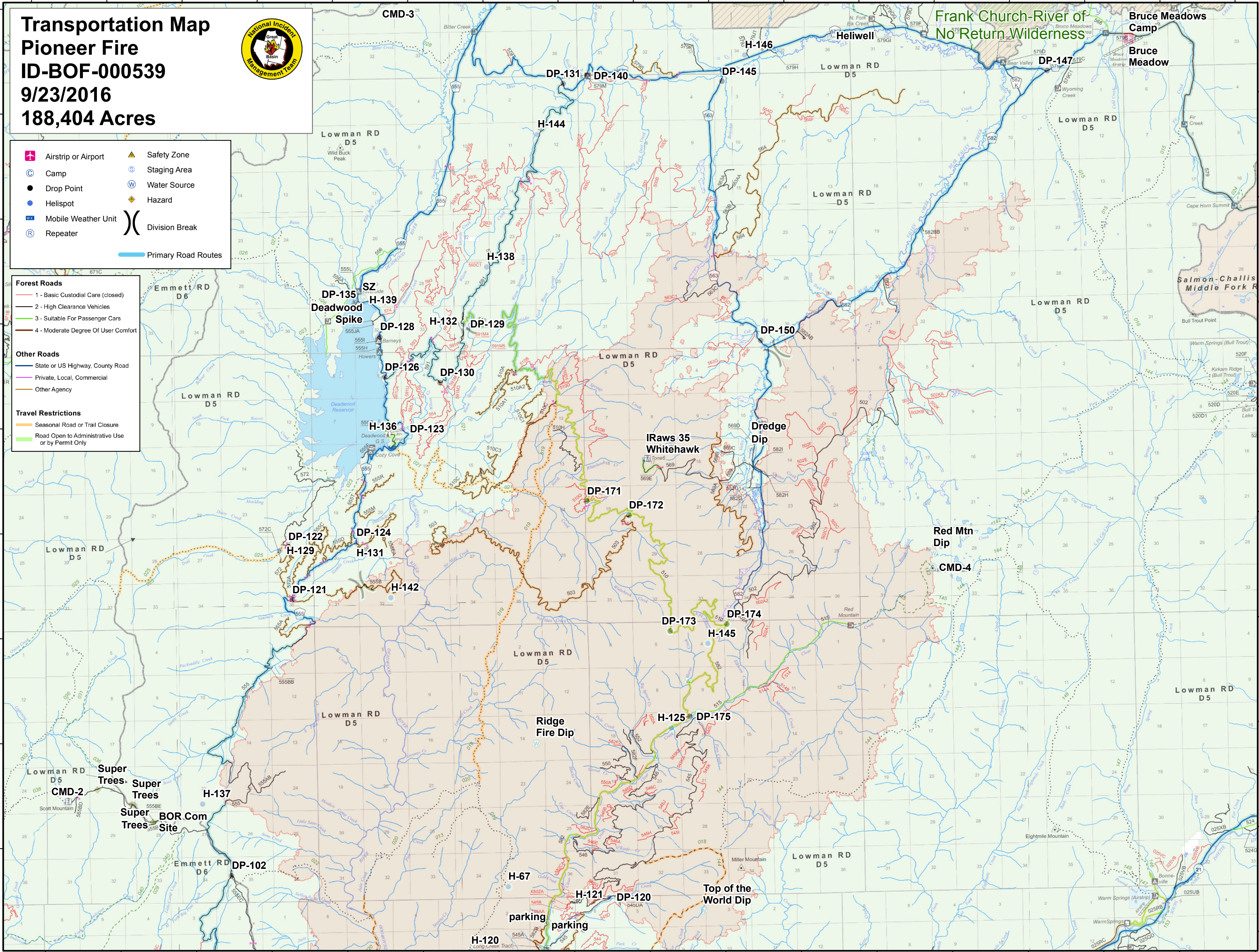
9/23/2016

188,404 Acres



- Airstrip or Airport
- Camp
- Drop Point
- Helispot
- Mobile Weather Unit
- Repeater
- Safety Zone
- Staging Area
- Water Source
- Hazard
- Division Break
- Primary Road Routes

- Forest Roads**
- 1 - Basic Custodial Care (closed)
 - 2 - High Clearance Vehicles
 - 3 - Suitable For Passenger Cars
 - 4 - Moderate Degree Of User Comfort
- Other Roads**
- State or US Highway, County Road
 - Private, Local, Commercial
 - Other Agency
- Travel Restrictions**
- Seasonal Road or Trail Closure
 - Road Open to Administrative Use or by Permit Only



115°48'W 115°46'W 115°44'W 115°42'W 115°40'W 115°38'W 115°36'W 115°34'W 115°32'W 115°30'W 115°28'W 115°26'W 115°24'W 115°22'W 115°20'W 115°18'W 115°16'W