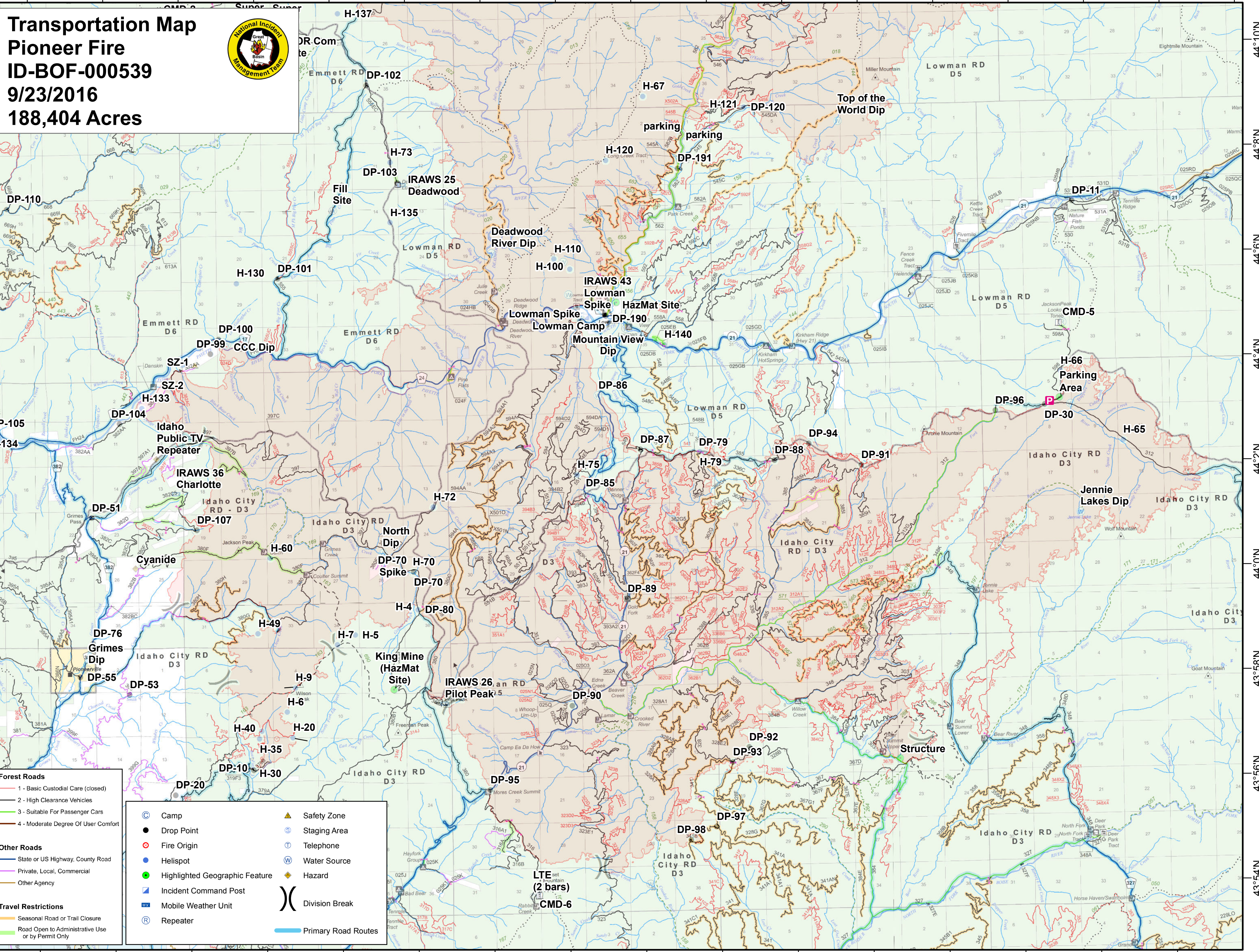


115°52'W 115°50'W 115°48'W 115°46'W 115°44'W 115°42'W 115°40'W 115°38'W 115°36'W 115°34'W 115°32'W 115°30'W 115°28'W 115°26'W 115°24'W 115°22'W 115°20'W



Transportation Map
Pioneer Fire
ID-BOF-000539
9/23/2016
188,404 Acres



- Forest Roads**
- 1 - Basic Custodial Care (closed)
 - 2 - High Clearance Vehicles
 - 3 - Suitable For Passenger Cars
 - 4 - Moderate Degree Of User Comfort
- Other Roads**
- State or US Highway, County Road
 - Private, Local, Commercial
 - Other Agency
- Travel Restrictions**
- Seasonal Road or Trail Closure
 - Road Open to Administrative Use or by Permit Only

- ⊙ Camp
- Drop Point
- ⊙ Fire Origin
- Helispot
- Highlighted Geographic Feature
- ⊙ Incident Command Post
- ⊙ Mobile Weather Unit
- ⊙ Repeater
- ▲ Safety Zone
- ⊙ Staging Area
- ⊙ Telephone
- ⊙ Water Source
- ◆ Hazard
- ⊙ Division Break
- Primary Road Routes

115°52'W 115°50'W 115°48'W 115°46'W 115°44'W 115°42'W 115°40'W 115°38'W 115°36'W 115°34'W 115°32'W 115°30'W 115°28'W 115°26'W 115°24'W 115°22'W

44°10'N
44°8'N
44°6'N
44°4'N
44°2'N
44°0'N
43°58'N
43°56'N
43°54'N

44°10'N
44°8'N
44°6'N
44°4'N
44°2'N
44°0'N
43°58'N
43°56'N
43°54'N