

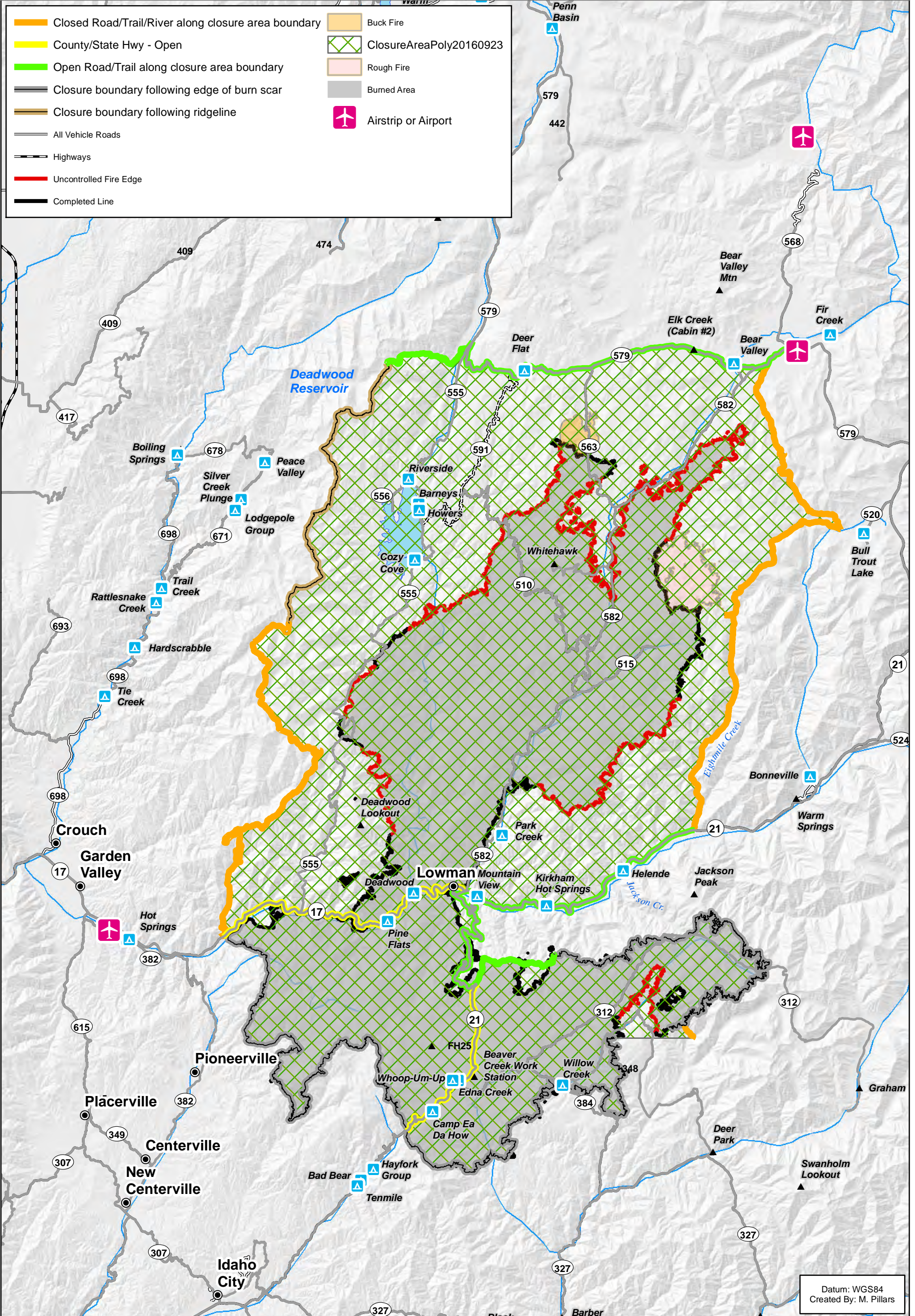
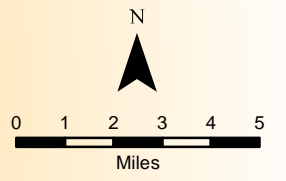


Fire Closure and Burned Area

Pioneer Fire

09/25/2016

188,404 Acres



- Closed Road/Trail/River along closure area boundary
- County/State Hwy - Open
- Open Road/Trail along closure area boundary
- Closure boundary following edge of burn scar
- Closure boundary following ridgeline
- All Vehicle Roads
- Highways
- Uncontrolled Fire Edge
- Completed Line
- Buck Fire
- ClosureAreaPoly20160923
- Rough Fire
- Burned Area
- Airstrip or Airport

Datum: WGS84
Created By: M. Pillars