



# PIONEER Incident Decision

Published  
08/06/16 18:36

## Table of Contents

1. Decision .....	2
1.1. Decision Summary.....	2
1.2. Incident Information.....	3
1.3. Weather.....	5
1.4. Risk.....	10
1.5. Objectives.....	13
1.6. Course of Action.....	27
1.7. Cost.....	47
1.8. Rationale.....	48

# 1. Decision

## 1.1. Decision Summary

### Decision Information

NAME	VALUE
Published	08/06/2016 18:36CDT
Estimated Cost	\$35,000,000
Incident Owner (s)	Dusty Pence, Cecilia Seesholtz, Brant Petersen, Annie Benoit, Tony DeMasters, Amanda Leguineche, Jason Butler, Stephaney Kerley, Allyn Spanfellner, Justin Kaber, Elizabeth Lund, John Kidd
Editor(s)	Jason Forthofer, Stewart Turner, Steve Ziel
Reviewer(s)	
Approver(s)	Brant Petersen, Cecilia Seesholtz
Natl Preparedness Level	3

### Decision History

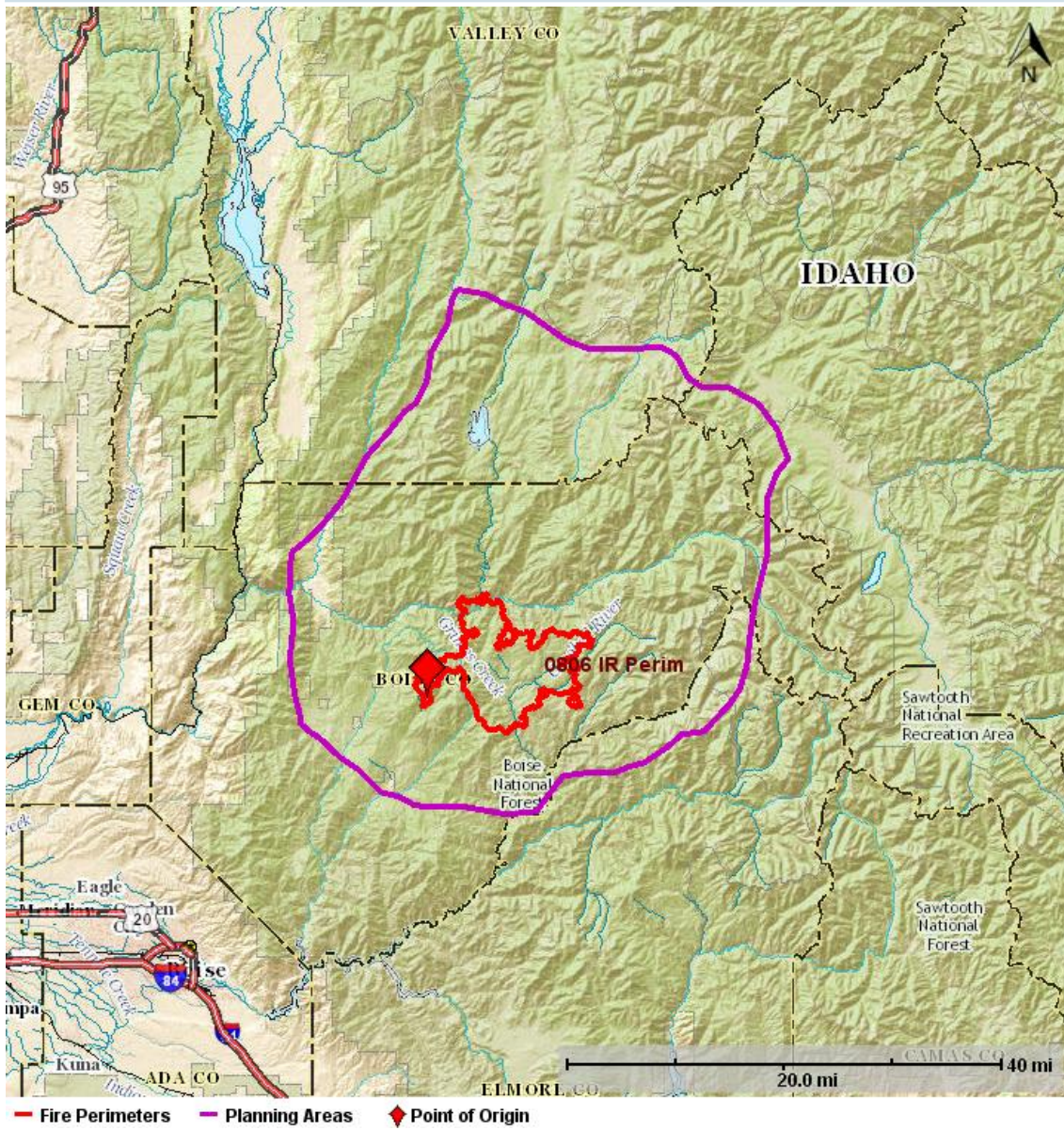
Editor Name	Action	Date (CDT)	Comment
Petersen, Brant	Published	08/06/2016 18:36	
Petersen, Brant	Approved	08/06/2016 18:36	
Seesholtz, Cecilia	Approved	08/06/2016 18:33	
Seesholtz, Cecilia	Review Requested	08/06/2016 18:32	
Seesholtz, Cecilia	Review Requested	08/06/2016 18:26	
Spanfellner, Allyn	Created	08/06/2016 13:57	

## 1.2. Incident Information

### Incident Information

NAME	VALUE
Incident Name	PIONEER
Unique Fire Identifier	2016-IDBOF-000539
Responsible Unit Name	Boise National Forest
FireCode	KGG1
P-Code	P4KGG1
Point of Origin	43.95024N / 115.7619 W
Incident Size	51,903acres
Latest Perimeter Size	58,147acres
Incident Cause	Undetermined
Incident Type	Wildfire
Incident Discovery	07/18/2016 17:09
Contained	
Controlled	
Out	
Jurisdictional Unit	IDBOF - Boise National Forest
Jurisdictional Agency(s)	BLM, USFS
Geographic Area (prep level)	Great Basin (4)
Owner Name(s)	Dusty Pence, Cecilia Seesholtz, Brant Petersen, Annie Benoit, Tony DeMasters, Amanda Leguineche, Jason Butler, Stephaney Kerley, Allyn Spanfellner, Justin Kaber, Elizabeth Lund, John Kidd

Incident Map



# 1.3. Weather

## Fire Weather Zone Forecast

---

000  
FNUS55 KPIH 062039  
FWFFIH  
FIRE WEATHER PLANNING FORECAST FOR SOUTHEAST IDAHO  
NATIONAL WEATHER SERVICE POCATELLO ID  
239 PM MDT SAT AUG 6 2016  
...RED FLAG WARNING IN EFFECT FOR SCATTERED THUNDERSTORMS AND OUTFLOW WINDS FOR ZONES 410, 411, 475, 476 UNTIL 9 PM MDT THIS EVENING...  
.DISCUSSION...EXPECT SCATTERED THUNDERSTORM DEVELOPMENT THROUGHOUT THE AFTERNOON AND EVENING HOURS WITH GUSTY WINDS IN EXCESS OF 50 MPH AND FREQUENT LIGHTNING IN THE STRONGEST CELLS. FOR TOMORROW, A SIMILAR PATTERN IS EXPECTED TO DEVELOP IN THESE SAME AREAS. LOCAL WETTING RAINS UP TO 0.25 INCH MORE LIKELY ACROSS THE CENTRAL MOUNTAINS. GUSTY WINDS TO 30 MPH ACROSS THE SNAKE PLAIN AND SOUTHERN HIGHLANDS WITH DRIER CONDITIONS ARE FORECAST AS WELL.  
.FORECAST SUMMARY FOR ZONE 475 AND 476...  
.TONIGHT...MOSTLY CLOUDY IN THE EVENING THEN CLEARING. NEARLY STEADY TEMPERATURES. INCREASED HUMIDITY. SCATTERED THUNDERSTORMS THROUGH THE NIGHT. SOUTHWEST WINDS AROUND 10 MPH IN THE EVENING BECOMING TERRAIN DRIVEN.  
.SUNDAY...PARTLY SUNNY. NEARLY STEADY TEMPERATURES. SLIGHTLY INCREASED HUMIDITY. CHANCE OF SHOWERS IN THE MORNING. CHANCE OF THUNDERSTORMS THROUGH THE DAY. TERRAIN DRIVEN WINDS BELOW 10 MPH BECOMING SOUTHWEST 10 TO 15 MPH IN THE AFTERNOON.  
.SUNDAY NIGHT...PARTLY CLOUDY. NEARLY STEADY TEMPERATURES. NEARLY STEADY HUMIDITIES. CHANCE OF THUNDERSTORMS. WEST WINDS AROUND 10 MPH IN THE EVENING BECOMING TERRAIN DRIVEN.  
.MONDAY...MOSTLY SUNNY. NEARLY STEADY TEMPERATURES. SLIGHTLY DECREASED HUMIDITY. TERRAIN DRIVEN WINDS BELOW 10 MPH BECOMING SOUTHWEST 10 TO 15 MPH IN THE AFTERNOON.  
ID2475-071030-  
EAST SALMON RIVER MOUNTAINS/SALMON NF-  
239 PM MDT SAT AUG 6 2016  
...RED FLAG WARNING IN EFFECT FOR SCATTERED THUNDERSTORMS AND OUTFLOW WINDS UNTIL 9 PM MDT THIS EVENING...  
.TONIGHT...  
\* SKY/WEATHER...PARTLY CLOUDY. ISOLATED SHOWERS AND THUNDERSTORMS.  
\* MIN TEMPERATURE...45-52.  
\* 24 HR TREND...DOWN 6.  
\* MAX HUMIDITY...67-75 PERCENT.  
\* 24 HR TREND...UP 26.  
\* 20FT/10MIN AVG WIND...  
\* VALLEYS/LWR SLOPES...SOUTH 6 TO 8 MPH IN THE EVENING BECOMING DOWNSLOPE/DOWNVALLEY 2 TO 5 MPH.  
\* RIDGES/UPR SLOPES...SOUTH 6 TO 9 MPH IN THE EVENING BECOMING VARIABLE 3 TO 6 MPH.  
\* CHC WETTING RAIN...10 PERCENT.  
\* LAL...2.  
\* HAINES INDEX...4.  
\* MIXING HEIGHT...0-1000 FT AGL.  
\* TRANSPORT WINDS...SOUTH 10 TO 15 MPH.  
.SUNDAY...  
\* SKY/WEATHER...PARTLY CLOUDY THEN BECOMING MOSTLY CLOUDY. ISOLATED THUNDERSTORMS IN THE MORNING. CHANCE OF RAIN SHOWERS THROUGH THE DAY. SCATTERED THUNDERSTORMS IN THE AFTERNOON.  
\* MAX TEMPERATURE...70-77.  
\* 24 HR TREND...DOWN 2.  
\* MIN HUMIDITY...24-32 PERCENT VALLEYS AND 28-36 PERCENT RIDGES.  
\* 24 HR TREND...UP 7.  
\* 20FT/10MIN AVG WIND...  
\* VALLEYS/LWR SLOPES...UPSLOPE/UPVALLEY 2 TO 5 MPH BECOMING WEST 6 TO 9 MPH IN THE AFTERNOON.  
\* RIDGES/UPR SLOPES...VARIABLE 3 TO 6 MPH BECOMING SOUTHWEST 7 TO 10 MPH IN THE AFTERNOON.  
\* CHC WETTING RAIN...40 PERCENT.  
\* LAL...2...THEN 4 IN THE AFTERNOON.  
\* HAINES INDEX...4.  
\* MIXING HEIGHT...12750-13750 FT AGL.  
\* TRANSPORT WINDS...LIGHT AND VARIABLE WINDS BECOMING SOUTHWEST AROUND 15 MPH IN THE AFTERNOON.  
.SUNDAY NIGHT...  
\* SKY/WEATHER...PARTLY CLOUDY THEN BECOMING CLEAR. SCATTERED THUNDERSTORMS IN THE EVENING THEN A SLIGHT CHANCE OF RAIN SHOWERS AFTER MIDNIGHT.  
\* MIN TEMPERATURE...43-50.  
\* 24 HR TREND...DOWN 3.  
\* MAX HUMIDITY...67-75 PERCENT.  
\* 24 HR TREND...LITTLE CHANGE.  
\* 20FT/10MIN AVG WIND...  
\* VALLEYS/LWR SLOPES...WEST 6 TO 10 MPH IN THE EVENING BECOMING DOWNSLOPE/DOWNVALLEY 2 TO 5 MPH.

Fire Weather Zone Forecast

\* RIDGES/UPR SLOPES...SOUTHWEST 8 TO 13 MPH.  
\* CHC WETTING RAIN...0 PERCENT.  
\* LAL...4...THEN 1 AFTER MIDNIGHT.  
\* HAINES INDEX...4.  
\* MIXING HEIGHT...200-1200 FT AGL.  
\* TRANSPORT WINDS...SOUTHWEST 10 TO 15 MPH.  
.MONDAY...  
\* SKY/WEATHER...SUNNY THEN BECOMING PARTLY CLOUDY. SLIGHT CHANCE OF RAIN SHOWERS THROUGH THE DAY. ISOLATED THUNDERSTORMS IN THE AFTERNOON.  
\* MAX TEMPERATURE...73-80 VALLEYS AND 65-72 RIDGES.  
\* 24 HR TREND...LITTLE CHANGE.  
\* MIN HUMIDITY...16-24 PERCENT VALLEYS AND 20-28 PERCENT RIDGES.  
\* 24 HR TREND...DOWN 7.  
\* 20FT/10MIN AVG WIND...  
\* VALLEYS/LWR SLOPES...UPSLOPE/UPVALLEY 2 TO 5 MPH BECOMING SOUTHWEST 6 TO 9 MPH IN THE AFTERNOON.  
\* RIDGES/UPR SLOPES...SOUTHWEST 6 TO 11 MPH.  
\* CHC WETTING RAIN...0 PERCENT.  
\* LAL...1...THEN 2 IN THE AFTERNOON.  
\* HAINES INDEX...5.  
\* MIXING HEIGHT...14000-15000 FT AGL.  
\* TRANSPORT WINDS...SOUTHWEST 10 TO 15 MPH.  
.FORECAST DAYS 3 THROUGH 7.....  
.TUESDAY...PARTLY CLOUDY WITH SLIGHT CHANCE OF SHOWERS AND THUNDERSTORMS. LOWS IN THE MID 40S. HIGHS IN THE LOWER 70S. WINDS GENERALLY LESS THAN 6 MPH.  
.WEDNESDAY...PARTLY CLOUDY WITH SLIGHT CHANCE OF SHOWERS AND THUNDERSTORMS. LOWS IN THE MID 40S. HIGHS IN THE LOWER 70S. WINDS GENERALLY LESS THAN 6 MPH.  
.THURSDAY...PARTLY CLOUDY WITH SLIGHT CHANCE OF SHOWERS AND THUNDERSTORMS. LOWS IN THE MID 40S. HIGHS IN THE LOWER 70S. WINDS GENERALLY LESS THAN 6 MPH.  
.FRIDAY...MOSTLY CLEAR. SLIGHT CHANCE OF SHOWERS AND THUNDERSTORMS. LOWS IN THE MID 40S. HIGHS IN THE LOWER 70S.  
.SATURDAY...MOSTLY CLEAR. LOWS IN THE MID 40S. HIGHS IN THE UPPER 70S.  
\$\$  
IDZ422-071030-  
SAWTOOTH RANGE/NORTHERN SAWTOOTH NF-  
239 PM MDT SAT AUG 6 2016  
.TONIGHT...  
\* SKY/WEATHER...PARTLY CLOUDY. ISOLATED SHOWERS AND THUNDERSTORMS.  
\* MIN TEMPERATURE...45-52.  
\* 24 HR TREND...DOWN 2.  
\* MAX HUMIDITY...60-68 PERCENT VALLEYS AND 56-64 PERCENT RIDGES.  
\* 24 HR TREND...LITTLE CHANGE.  
\* 20FT/10MIN AVG WIND...  
\* VALLEYS/LWR SLOPES...SOUTHWEST 6 TO 11 MPH SHIFTING TO THE NORTHWEST AFTER MIDNIGHT.  
\* RIDGES/UPR SLOPES...SOUTH 8 TO 13 MPH.  
\* CHC WETTING RAIN...0 PERCENT.  
\* LAL...2.  
\* HAINES INDEX...5.  
\* MIXING HEIGHT...100-1100 FT AGL.  
\* TRANSPORT WINDS...SOUTHWEST AROUND 15 MPH.  
.SUNDAY...  
\* SKY/WEATHER...PARTLY CLOUDY. ISOLATED SHOWERS AND THUNDERSTORMS.  
\* MAX TEMPERATURE...76-83 VALLEYS AND 67-73 RIDGES.  
\* 24 HR TREND...LITTLE CHANGE.  
\* MIN HUMIDITY...19-27 PERCENT VALLEYS AND 25-33 PERCENT RIDGES.  
\* 24 HR TREND...UP 2.  
\* 20FT/10MIN AVG WIND...  
\* VALLEYS/LWR SLOPES...EAST 6 TO 8 MPH SHIFTING TO THE SOUTHWEST 12 TO 17 MPH IN THE AFTERNOON.  
\* RIDGES/UPR SLOPES...SOUTH 10 TO 15 MPH.  
\* CHC WETTING RAIN...10 PERCENT.  
\* LAL...2.  
\* HAINES INDEX...5.  
\* MIXING HEIGHT...12500-13500 FT AGL.  
\* TRANSPORT WINDS...SOUTHEAST AROUND 10 MPH INCREASING TO SOUTHWEST AROUND 20 MPH IN THE AFTERNOON.  
.SUNDAY NIGHT...  
\* SKY/WEATHER...CLEAR.  
\* MIN TEMPERATURE...42-49.  
\* 24 HR TREND...DOWN 2.  
\* MAX HUMIDITY...56-64 PERCENT.  
\* 24 HR TREND...DOWN 2.  
\* 20FT/10MIN AVG WIND...  
\* VALLEYS/LWR SLOPES...WEST 11 TO 16 MPH SHIFTING TO THE NORTHWEST AROUND 6 MPH AFTER MIDNIGHT.  
\* RIDGES/UPR SLOPES...WEST 12 TO 17 MPH IN THE EVENING BECOMING VARIABLE 4 TO 9 MPH.  
\* CHC WETTING RAIN...0 PERCENT.  
\* LAL...1.



Fire Weather Zone Forecast

\* HAINES INDEX...5.
\* MIXING HEIGHT...100-1100 FT AGL.
\* TRANSPORT WINDS...SOUTHWEST AROUND 20 MPH BECOMING WEST AROUND 10 MPH AFTER MIDNIGHT.
.MONDAY...
\* SKY/WEATHER...SUNNY THEN BECOMING PARTLY CLOUDY.
\* MAX TEMPERATURE...74-81 VALLEYS AND 65-72 RIDGES.
\* 24 HR TREND...DOWN 2.
\* MIN HUMIDITY...15-23 PERCENT VALLEYS AND 19-27 PERCENT RIDGES.
\* 24 HR TREND...DOWN 5.
\* 20FT/10MIN AVG WIND...
\* VALLEYS/LWR SLOPES...SOUTH 7 TO 12 MPH.
\* RIDGES/UPR SLOPES...SOUTHWEST 8 TO 13 MPH.
\* CHC WETTING RAIN...0 PERCENT.
\* LAL...1.
\* HAINES INDEX...5.
\* MIXING HEIGHT...11000-12000 FT AGL.
\* TRANSPORT WINDS...SOUTHWEST AROUND 10 MPH INCREASING TO AROUND 20 MPH IN THE AFTERNOON.
.FORECAST DAYS 3 THROUGH 7.....
.TUESDAY...MOSTLY CLEAR. SLIGHT CHANCE OF SHOWERS AND THUNDERSTORMS. LOWS IN THE MID 40S. HIGHS IN THE LOWER 70S. WINDS GENERALLY LESS THAN 6 MPH.
.WEDNESDAY...MOSTLY CLEAR. LOWS IN THE MID 40S. HIGHS IN THE MID 70S. WINDS GENERALLY LESS THAN 6 MPH.
.THURSDAY...PARTLY CLOUDY WITH SLIGHT CHANCE OF SHOWERS AND THUNDERSTORMS. LOWS IN THE MID 40S. HIGHS IN THE LOWER 70S. WINDS GENERALLY LESS THAN 6 MPH.
.FRIDAY...MOSTLY CLEAR. SLIGHT CHANCE OF SHOWERS AND THUNDERSTORMS. LOWS IN THE MID 40S. HIGHS IN THE MID 70S.
.SATURDAY...MOSTLY CLEAR. LOWS IN THE MID 40S. HIGHS IN THE MID 70S.
\$\$
.OUTLOOK...AUGUST 14TH THROUGH AUGUST 20TH...NEAR NORMAL TEMPERATURES WITH BELOW NORMAL PRECIPITATION.
\$\$
000
FNUS55 KBOI 062105
FWFBOI
FIRE WEATHER PLANNING FORECAST FOR SW IDAHO AND SE OREGON
NATIONAL WEATHER SERVICE BOISE ID
305 PM MDT SAT AUG 6 2016
..A RED FLAG WARNING FOR LIGHTNING ACROSS THE PAYETTE...BOISE AND WESTERN SAWTOOTH NATIONAL FORESTS IS NOW IN EFFECT FROM 10 AM TO 6 PM MDT SUNDAY...
.DISCUSSION...SHOWERS AND THUNDERSTORMS WILL CONTINUE THROUGH THE AFTERNOON...THEN RE-DEVELOP LATE TONIGHT AS A SECOND UPPER LEVEL WAVE APPROACHES FROM THE SOUTHWEST. THIS SECOND WAVE WILL SPUR STORM DEVELOPMENT BOTH SUNDAY MORNING AND SUNDAY AFTERNOON. THE GREATEST FOCUS AND COVERAGE OF STORMS WILL BE OVER THE CENTRAL IDAHO MOUNTAINS MID-DAY SUNDAY - A RED FLAG WARNING FOR LIGHTNING IS IN EFFECT. STORMS WILL BE CAPABLE OF PRODUCING BETWEEN 0.05 AND 0.35 INCHES OF RAINFALL AND WIND GUSTS TO 45 MPH. THE CURRENT TREND OF COOLER TEMPERATURES AND SLIGHTLY HIGHER RELATIVE HUMIDITY WILL CONTINUE THROUGH MUCH OF THE COMING WEEK...AS A POTENT UPPER LOW DEEPENS OVER THE PACIFIC NORTHWEST.
ID2403-071545-
NORTHERN BOISE NATIONAL FOREST-
305 PM MDT SAT AUG 6 2016
..RED FLAG WARNING FOR LIGHTNING IN EFFECT FROM 10 AM TO 6 PM MDT SUNDAY...
.TONIGHT...
SKY/WEATHER.....MOSTLY CLEAR. ISOLATED SHOWERS AND THUNDERSTORMS IN THE EVENING. CHANCE OF PRECIPITATION 20 PERCENT.
MIN TEMPERATURE.....46 TO 59.
24 HR TREND.....ON AVERAGE...UNCHANGED.
MAX HUMIDITY.....52 TO 77 PERCENT.
24 HR TREND.....ON AVERAGE...4 PERCENT WETTER.
20-FOOT WINDS.....
VALLEYS.....WEST 8 TO 9 MPH IN THE EVENING...BECOMING LIGHT DOWNSLOPE LESS THAN 8 MPH AFTER MIDNIGHT.
RIDGES.....WEST 8 TO 11 MPH WITH GUSTS TO 16 MPH IN THE EVENING...BECOMING LIGHT AFTER MIDNIGHT.
HAINES INDEX.....4 LOW.
LAL.....2 IN THE EVENING...DECREASING TO 1 AFTER MIDNIGHT.
CWR /0.10 INCH/.....10 PERCENT.
SMOKE DISPERSAL:
MIXING HEIGHT.....300-400 FT AGL.
TRANSPORT WINDS...EAST AROUND 5 MPH.
.SUNDAY...
SKY/WEATHER.....PARTLY CLOUDY WITH SCATTERED SHOWERS AND THUNDERSTORMS...MAINLY IN THE AFTERNOON. CHANCE OF PRECIPITATION 40 PERCENT.

Fire Weather Zone Forecast

MAX TEMPERATURE.....69 TO 81.  
24 HR TREND.....ON AVERAGE...4 DEGREES COOLER.  
MIN HUMIDITY.....21 TO 30 PERCENT.  
24 HR TREND.....ON AVERAGE...6 PERCENT WETTER.  
20-FOOT WINDS.....  
VALLEYS.....LIGHT UPSLOPE WINDS LESS THAN 8 MPH IN THE  
MORNING...BECOMING WEST 8 TO 11 MPH WITH GUSTS  
TO 16 MPH IN THE AFTERNOON.  
RIDGES.....LIGHT WINDS LESS THAN 8 MPH IN THE  
MORNING...BECOMING WEST 8 TO 13 MPH WITH GUSTS  
TO 18 MPH IN THE AFTERNOON.  
HAINES INDEX.....4 LOW.  
LAL.....3 IN THE MORNING...INCREASING TO 4 IN THE  
AFTERNOON.  
CWR /0.10 INCH/.....30 PERCENT.  
SMOKE DISPERSAL:  
MIXING HEIGHT.....11000-12500 FT AGL.  
TRANSPORT WINDS....SOUTHWEST 15 TO 20 MPH.  
.SUNDAY NIGHT...  
SKY/WEATHER.....MOSTLY CLEAR. A 20 PERCENT CHANCE OF SHOWERS  
AND THUNDERSTORMS IN THE EVENING.  
MIN TEMPERATURE.....42 TO 54.  
24 HR TREND.....ON AVERAGE...5 DEGREES COOLER.  
MAX HUMIDITY.....56 TO 81 PERCENT.  
24 HR TREND.....ON AVERAGE...4 PERCENT WETTER.  
20-FOOT WINDS.....  
VALLEYS.....SOUTHWEST 8 TO 11 MPH IN THE EVENING...BECOMING  
LIGHT DOWNSLOPE LESS THAN 8 MPH AFTER MIDNIGHT.  
RIDGES.....WEST 8 TO 14 MPH IN THE EVENING...BECOMING  
LIGHT AFTER MIDNIGHT.  
HAINES INDEX.....4 LOW.  
LAL.....2 IN THE EVENING...DECREASING TO 1 AFTER  
MIDNIGHT.  
CWR /0.10 INCH/.....0 PERCENT.  
SMOKE DISPERSAL:  
MIXING HEIGHT.....200-300 FT AGL.  
TRANSPORT WINDS....EAST 5 TO 10 MPH.  
.MONDAY...  
SKY/WEATHER.....SUNNY.  
MAX TEMPERATURE.....69 TO 79.  
24 HR TREND.....ON AVERAGE...UNCHANGED.  
MIN HUMIDITY.....19 TO 26 PERCENT.  
24 HR TREND.....ON AVERAGE...3 PERCENT DRIER.  
20-FOOT WINDS.....  
VALLEYS.....LIGHT UPSLOPE WINDS LESS THAN 8 MPH IN THE  
MORNING...BECOMING SOUTHWEST 8 TO 10 MPH IN THE  
AFTERNOON.  
RIDGES.....LIGHT WINDS LESS THAN 8 MPH IN THE  
MORNING...BECOMING SOUTHWEST 8 TO 13 MPH WITH  
GUSTS TO 18 MPH IN THE AFTERNOON.  
HAINES INDEX.....4 LOW.  
LAL.....1.  
CWR /0.10 INCH/.....0 PERCENT.  
SMOKE DISPERSAL:  
MIXING HEIGHT.....8500-10500 FT AGL.  
TRANSPORT WINDS....SOUTHWEST 15 TO 20 MPH.  
\$\$  
IDZ421-071545-  
SOUTHERN BOISE NATIONAL FOREST/WESTERN SAWTOOTH NATIONAL FOREST-  
305 PM MDT SAT AUG 6 2016  
...RED FLAG WARNING FOR LIGHTNING IN EFFECT FROM 10 AM TO 6 PM  
MDT SUNDAY...  
.TONIGHT...  
SKY/WEATHER.....MOSTLY CLEAR.  
MIN TEMPERATURE.....46 TO 60.  
24 HR TREND.....ON AVERAGE...UNCHANGED.  
MAX HUMIDITY.....44 TO 64 PERCENT.  
24 HR TREND.....ON AVERAGE...2 PERCENT WETTER.  
20-FOOT WINDS.....  
VALLEYS.....WEST 8 TO 11 MPH WITH GUSTS TO 16 MPH IN THE  
EVENING...SHIFTING TO NORTHEAST 8 TO 9 MPH  
AFTER MIDNIGHT.  
RIDGES.....WEST 8 TO 12 MPH IN THE EVENING...SHIFTING TO  
EAST AROUND 8 MPH AFTER MIDNIGHT.  
HAINES INDEX.....5 MODERATE.  
LAL.....1.  
CWR /0.10 INCH/.....0 PERCENT.  
SMOKE DISPERSAL:  
MIXING HEIGHT.....200-300 FT AGL.  
TRANSPORT WINDS....NORTHEAST 5 TO 10 MPH.  
.SUNDAY...  
SKY/WEATHER.....MOSTLY CLOUDY WITH SCATTERED SHOWERS AND  
THUNDERSTORMS. CHANCE OF PRECIPITATION 30 PERCENT.  
MAX TEMPERATURE.....76 TO 85...EXCEPT 70 TO 79 ABOVE 6500 FEET.  
24 HR TREND.....ON AVERAGE...4 DEGREES COOLER.



Fire Weather Zone Forecast

MIN HUMIDITY.....16 TO 26 PERCENT.  
24 HR TREND.....ON AVERAGE...3 PERCENT WETTER.  
20-FOOT WINDS.....  
VALLEYS.....EAST 8 TO 10 MPH IN THE MORNING...SHIFTING TO  
SOUTHWEST 9 TO 15 MPH WITH GUSTS TO 22 MPH IN  
THE AFTERNOON.  
RIDGES.....SOUTHEAST 8 TO 9 MPH IN THE MORNING...SHIFTING  
TO WEST 8 TO 14 MPH WITH GUSTS TO 20 MPH IN THE  
AFTERNOON.  
HAINES INDEX.....5 MODERATE.  
LAL.....3 IN THE MORNING...INCREASING TO 4 IN THE  
AFTERNOON.  
CWR /0.10 INCH/.....20 PERCENT.  
SMOKE DISPERSAL:  
MIXING HEIGHT.....11000-13000 FT AGL.  
TRANSPORT WINDS...SOUTHWEST 10 TO 15 MPH.  
.SUNDAY NIGHT...  
SKY/WEATHER.....CLEAR.  
MIN TEMPERATURE.....42 TO 55.  
24 HR TREND.....ON AVERAGE...4 DEGREES COOLER.  
MAX HUMIDITY.....50 TO 70 PERCENT.  
24 HR TREND.....ON AVERAGE...5 PERCENT WETTER.  
20-FOOT WINDS.....  
VALLEYS.....WEST 8 TO 14 MPH IN THE EVENING...BECOMING  
LIGHT DOWNSLOPE LESS THAN 8 MPH AFTER MIDNIGHT.  
RIDGES.....WEST 8 TO 13 MPH WITH GUSTS TO 18 MPH IN THE  
EVENING...BECOMING LIGHT AFTER MIDNIGHT.  
HAINES INDEX.....5 MODERATE.  
LAL.....1.  
CWR /0.10 INCH/.....0 PERCENT.  
SMOKE DISPERSAL:  
MIXING HEIGHT.....100-200 FT AGL.  
TRANSPORT WINDS...NORTHEAST 5 TO 10 MPH.  
.MONDAY...  
SKY/WEATHER.....SUNNY.  
MAX TEMPERATURE.....75 TO 84...EXCEPT 69 TO 78 ABOVE 6500 FEET.  
24 HR TREND.....ON AVERAGE...UNCHANGED.  
MIN HUMIDITY.....14 TO 24 PERCENT.  
24 HR TREND.....ON AVERAGE...UNCHANGED.  
20-FOOT WINDS.....  
VALLEYS.....LIGHT UPSLOPE WINDS LESS THAN 8 MPH IN THE  
MORNING...BECOMING SOUTHWEST 8 TO 12 MPH IN THE  
AFTERNOON.  
RIDGES.....LIGHT WINDS LESS THAN 8 MPH IN THE  
MORNING...BECOMING SOUTHWEST 8 TO 12 MPH IN THE  
AFTERNOON.  
HAINES INDEX.....4 LOW.  
LAL.....1.  
CWR /0.10 INCH/.....0 PERCENT.  
SMOKE DISPERSAL:  
MIXING HEIGHT.....8500-10500 FT AGL.  
TRANSPORT WINDS...SOUTHWEST 10 TO 20 MPH.  
\$\$  
=  
.FORECAST DAYS 3 THROUGH 7...  
.TUESDAY...PARTLY CLOUDY. A 20 PERCENT CHANCE OF SHOWERS AND  
THUNDERSTORMS. LOWS 44 TO 56. HIGHS 70 TO 85. NORTHWEST WINDS UP  
TO 10 MPH.  
.WEDNESDAY...PARTLY CLOUDY. A 20 PERCENT CHANCE OF SHOWERS AND  
THUNDERSTORMS. LOWS 43 TO 55. HIGHS 69 TO 84. NORTH WINDS AROUND  
10 MPH.  
.THURSDAY...MOSTLY CLEAR. LOWS 45 TO 57. HIGHS 73 TO 88. NORTH  
WINDS AROUND 10 MPH.  
.FRIDAY...MOSTLY CLEAR. LOWS 47 TO 59. HIGHS 76 TO 91.  
.SATURDAY...MOSTLY CLEAR. LOWS 47 TO 60. HIGHS 78 TO 93.  
.OUTLOOK FOR SUNDAY AUGUST 14 THROUGH SATURDAY AUGUST 20 CALLS  
FOR NEAR NORMAL TEMPERATURES AND BELOW NORMAL PRECIPITATION.  
\$\$  
=

## 1.4. Risk

### Relative Risk

NAME	VALUE
Relative Risk	High
Duration	High
Saved By	Spanfellner, Allyn
Completed	08/06/2016 11:59CDT

### Relative Risk Notes

The relative risk of the fire is high due to the many values at risk in close proximity to the fire area. The short and long term weather forecast predict hot and dry conditions to persist.

### Values Notes

Currently, there are threats to the communities of Idaho City, Lowman, Garden Valley, and Pioneerville. Infrastructure concerns include lookouts, communication sites, FS campgrounds, power lines, and recreation areas. Hwy 21 and Hwy 17 are major travel corridors that are currently or likely impacted. Municipal watershed's for the communities of Idaho City and Lowman.

### Hazards Notes

Currently, the Boise NF is in the middle of fire season. Fuel moistures are slightly below historical averages, except for the down woody material which is much lower than average. The majority of timber stand's have abnormally high levels of snags and heavy dead and down component due to bug kill which is driving current fire behavior.

### Probability Notes

The Boise is in the middle of fire season and as the forest moves through the rest of the season fuels will continue to dry. Hotter and drier weather conditions are expected in the long range forecast, with no expected measurable precipitation.

### Organization Assessment

NAME	VALUE
Unit Recommended Org Type	1
Saved By	Spanfellner, Allyn
Completed	08/06/2016 12:08CDT

### Organization Assessment Notes

A Type 1 Incident Management Team is currently managing the Pioneer Fire and another Type 1 Incident team is being ordered to replace the current team when they require rest rotation.

### Relative Risk Notes

The relative risk of the fire is high due to the many values at risk in close proximity to the fire area. The short and long term weather forecast predict hot and dry conditions to persist.

### Implementation Difficulty Notes

Current suppression resources are stretched thin considering recent fire growth and values at risk. Multiple spike camps are being used to keep fire resources close to strategic areas and improve efficiency. Many strategies and tactics are being used on many different Divisions to control fire growth. There are many high value areas in close proximity to the fire perimeter.

### Socio/Political Concerns Notes

The fire has grown to the extent that it is now threatening both Hwy 21 and 17 corridors. There is a loss of recreational and tourism opportunities in the Lowman, Idaho City, Garden Valley, and Stanley areas. Multiple FS facilities are currently threatened. Evacuations have taken place along the Hwy 21 corridor near Lowman and there is potential for more areas to be evacuated if large fire growth continues. A very large area closure is being implemented around the perimeter of the fire.

### Planning Area Values Inventory

NAME	VALUE
Planning Area Name	08/06/2016 18:36

Planning Area Values Inventory

Incident Name	PIONEER			
Planning Area Size	991,205 acres			
Category	Value	Data Source	Currency	Coverage
BLM Buildings	1	GeoCommunicator / Other Sources	07/21/2010	BLM Lands
BLM Range Allotments	10,811 acres	BLM National Operations Center (NOC)	03/01/2016	National
Building Clusters: Boise, ID	no data	US Counties / FGDC Cadastral Subcomm.		Available counties
Building Clusters: Custer, ID	0	US Counties / FGDC Cadastral Subcomm.		Available counties
Building Clusters: Elmore, ID	0	US Counties / FGDC Cadastral Subcomm.		Available counties
Building Clusters: Valley, ID	no data	US Counties / FGDC Cadastral Subcomm.		Available counties
Campgrounds	30	BLM (FAMS) and USFS INFRA	02/03/2015	National (BLM and USFS only)
Class 1 Airsheds	26,912 acres	NPS Air Resources Division	Various	National
Communication Towers	55	FCC	06/14/2012	National
County: Boise, ID	695,869 acres	HSIP 2011, US Census Bureau TIGER data	07/01/2010	National
County: Custer, ID	32,091 acres	HSIP 2011, US Census Bureau TIGER data	07/01/2010	National
County: Elmore, ID	53,207 acres	HSIP 2011, US Census Bureau TIGER data	07/01/2010	National
County: Valley, ID	210,038 acres	HSIP 2011, US Census Bureau TIGER data	07/01/2010	National
Est Ground Evac Time: 1-2 Hrs	313,295 acres	National Park Service NIFC	11/01/2012	CONUS
Est Ground Evac Time: 2-4 Hrs	463,778 acres	National Park Service NIFC	11/01/2012	CONUS
Est Ground Evac Time: 4-6 Hrs	167,280 acres	National Park Service NIFC	11/01/2012	CONUS
Est Ground Evac Time: 6+ Hrs	24,214 acres	National Park Service NIFC	11/01/2012	CONUS
Estimated Population	2,952	LandScan USA / Oak Ridge Laboratory	04/08/2015	National
Habitat: Bull Trout	2,983 acres	US Fish and Wildlife Service	01/20/2016	National
Habitat: Bull Trout	657.5 miles	US Fish and Wildlife Service	01/20/2016	National
Habitat: Steelhead	91.9 miles	US Fish and Wildlife Service	01/20/2016	National
IDBOF - Building Clusters / Building Clusters	33	IDSCF		Unit
IDBOF - Building Clusters / Building Clusters10	98	IDSCF		Unit
IDBOF - Building Clusters / Building Clusters11	77	IDBOF		Unit
IDBOF - Building Clusters / Building Clusters12	76	IDBOF		Unit
IDBOF - Building Clusters / Building Clusters15	81	IDBOF		Unit
IDBOF - Building Clusters / Building Clusters17	89	IDBOF		Unit
IDBOF - Building Clusters / Building Clusters20	59	IDBOF		Unit
IDBOF - Building Clusters / Building Clusters23	42	IDBOF		Unit
IDBOF - Building Clusters / Building Clusters9	73	IDBOF		Unit
IDSCF - Airstrips / Wilderness Airstrips	0.2 miles	IDSCF		Unit
IDSCF - Bridges / SZ Road Bridges	1	IDBOF		Unit
IDSCF - Rec. Site / Picnic Areas	1	IDSCF		Unit
IDSCF - Structures / MFRD	1	IDBOF		Unit
IRA: 06-005 Squaw Creek IRA	3,881 acres	Various		National
IRA: 06-915 Hanson Lakes IRA	38,044 acres	Various		National

Planning Area Values Inventory

Category	Value	Data Source	Currency	Coverage
IRA: Bald Mtn IRA	6,239 acres	Various		National
IRA: Bear Wallow IRA	73 acres	Various		National
IRA: Bernard IRA	5,897 acres	Various		National
IRA: Blue Bunch IRA	559 acres	Various		National
IRA: Deadwood IRA	52,498 acres	Various		National
IRA: Elk Creek IRA	14,479 acres	Various		National
IRA: Grand Mtn IRA	1,276 acres	Various		National
IRA: Grimes Pass IRA	13,297 acres	Various		National
IRA: Hanson Lakes IRA	2,192 acres	Various		National
IRA: Hawley Mtn IRA	5,274 acres	Various		National
IRA: Peace Rock IRA	108,388 acres	Various		National
IRA: Poker Meadows IRA	186 acres	Various		National
IRA: Red Mtn IRA	114,587 acres	Various		National
IRA: Ten Mile IRA	93,302 acres	Various		National
IRA: Whitehawk Mtn IRA	8,968 acres	Various		National
IRA: Wilson Peak IRA	7,955 acres	Various		National
Jurisdictional Agency: BLM	8,433 acres	Various	05/29/2015	National
Jurisdictional Agency: USFS	918,784 acres	Various	05/29/2015	National
NRA: Sawtooth NRA	1,309 acres	Various	09/15/2011	National
Natl Scenic Byways	98.4 miles	Various	varies by data source	National
Other Areas: Bear Creek ERNA	157 acres	Various	varies by data source	National
Other Areas: Lowman ERNA	338 acres	Various	varies by data source	National
Other Areas: Monumental Creek ERNA	107 acres	Various	varies by data source	National
Responsible Agency: State	65,919 acres	Various	July 2015	AK, CA, ID, MT, NM, MN
Responsible Agency: USFS	925,287 acres	Various	July 2015	AK, CA, ID, MT, NM, MN
Roads	71.0 miles	NAVTEQ	11/2012	National
USFS Buildings	230	USFS-FMIS	03/23/2016	National
Wilderness: Frank Church-River of No Return Wilderness	121 acres	Wilderness.net	1/22/2016	National
Wilderness: Sawtooth Wilderness	27,311 acres	Wilderness.net	1/22/2016	National

Coverage of Values Queried that Produced No Results

BLM Horse and Burro (National), BLM Oil / Gas Leases (Western United States), Electric Power Plants (National), Electric Sub Stations (National), Electric Transmission Lines (National), Mines (National), NPS Buildings (National), Natl Historic Trails (National), Natl Recreation Trails (National), Natl Scenic Trails (National), Oil and Gas Pipelines (National), Ozone Non-Attainment (National), Particulates Non-Attainment (National), Sage Grouse Habitat (National), TNC Lands (National), USFWS Trails (National), WSA (National)

## 1.5. Objectives

### Incident FMU/Strategic Objective Code List

Unit	FMU/Strat Obj Code	Acres
IDBOD	Payette - Payette FMU 3	8,433
IDBOF	1 - Resource Benefit	397,576
IDBOF	2 - Wildland Urban Interface	295,663
IDBOF	3 - Multiple Suppression Objectives	206,825
IDSCF	01 - 1 Frank Church River of No Return Wilderness	159
IDSCF	03 - 3 Challis Non-Wilderness	16,619
IDSTF	Conditional	18,167
IDSTF	Limited	27,980

### Spatial Fire Planning Inventory

Category	Value	Data Source	Currency	Coverage
Aqua Retardant Avoidance	235,433 acres	USFS Enterprise Data Warehouse	7/14/2015	National (USFS Units only)
Mgmt Req: 1.1	1 acres	IDBOF	Current	Unit Level
Mgmt Req: 1.2 FPSA	3,395 acres	IDBOF	Current	Unit Level
Mgmt Req: 1.2 WLR	174,445 acres	IDBOF	Current	Unit Level
Mgmt Req: 2.2	1,440 acres	IDBOF	Current	Unit Level
Mgmt Req: 2.4	2,037 acres	IDBOF	Current	Unit Level
Mgmt Req: 3.1 BCR	26,897 acres	IDBOF	Current	Unit Level
Mgmt Req: 3.1 FPSA	2,526 acres	IDBOF	Current	Unit Level
Mgmt Req: 3.2	34,251 acres	IDBOF	Current	Unit Level
Mgmt Req: 3.2 BCR	57,636 acres	IDBOF	Current	Unit Level
Mgmt Req: 3.2 FPSA	4,001 acres	IDBOF	Current	Unit Level
Mgmt Req: 4.1c FPSA	4,331 acres	IDBOF	Current	Unit Level
Mgmt Req: 4.1c P	167,422 acres	IDBOF	Current	Unit Level
Mgmt Req: 4.2	2,588 acres	IDBOF	Current	Unit Level
Mgmt Req: 5.1 FPSA	479 acres	IDBOF	Current	Unit Level
Mgmt Req: 5.1 GFRG WUI	1,453 acres	IDBOF	Current	Unit Level
Mgmt Req: 5.1 GFRG nonWUI	1,909 acres	IDBOF	Current	Unit Level
Mgmt Req: 5.1 North	185,960 acres	IDBOF	Current	Unit Level
Mgmt Req: 5.1 South	186,423 acres	IDBOF	Current	Unit Level
Mgmt Req: Bear Valley Subunit	269,869 acres	IDBOF	Current	Unit Level
Mgmt Req: MPC 2.1 Wild&Scenic Rivers	1,696 acres	IDSTF	Current	Unit Level
Mgmt Req: MPC 3.1	2,325 acres	IDSTF	Current	Unit Level
Mgmt Req: MPC 4.1C	1,525 acres	IDSTF	Current	Unit Level
Mgmt Req: MPC 4.2	2,154 acres	IDSTF	Current	Unit Level
Mgmt Req: MPC1.1	26,894 acres	IDSTF	Current	Unit Level
Mgmt Req: MPC1.2	11,513 acres	IDSTF	Current	Unit Level
Mgmt Req: Public Water Supply	381 acres	IDSTF	Current	Unit Level
Mgmt Req: Spawning Areas of Concern	56 acres	IDSTF	Current	Unit Level
Mgmt Req: TEPC Fish Payette&MiddleBoise	5,279 acres	IDSTF	Current	Unit Level
Mgmt Req: TEPC Fish UpperSalmon	2,603 acres	IDSTF	Current	Unit Level
Mgmt Req: Trapper Flat Subunit	127,704 acres	IDBOF	Current	Unit Level
Mgmt Req: Wild Scenic	37,804 acres	IDBOF	Current	Unit Level
Retardant Avoidance	92,017 acres	USFS Enterprise Data Warehouse	5/15/2015	National (USFS Units only)

Incident Objective List

Activated	Incident Objective
08/06/2016	<ul style="list-style-type: none"> <li>• Provide for firefighter and public safety through a risk-informed approach that limits firefighter exposure to only what is necessary to meet incident objectives with a high probability of success.                             <ul style="list-style-type: none"> <li>◦ Produce a shared sense of value and care about fire responders.</li> <li>◦ A common understanding on unnecessary exposure among agency administrators, commanders, responders, and community leaders.</li> <li>◦ Agreement among leaders and participants on specific actions they will take within their sphere of influence.</li> <li>◦ Commitment among all to <b>Stop, Think, Talk...before Acting</b>.</li> </ul> </li> </ul>
08/06/2016	<ul style="list-style-type: none"> <li>• Maintain positive community relationships by providing timely and accurate information. Involve key partners and stakeholders, early and often, in development of strategies, tactics, and decisions that may impact their interests</li> </ul>
08/06/2016	<ul style="list-style-type: none"> <li>• Ensure fire suppression costs are commensurate with values at risk.</li> </ul>
08/06/2016	<ul style="list-style-type: none"> <li>• Protect property, improvements, and infrastructure from fire damage utilizing standard wildland firefighting tactics.</li> </ul>
08/06/2016	<ul style="list-style-type: none"> <li>• Manage and monitor effectiveness of trail and area closures. Make modifications as warranted.</li> </ul>
08/06/2016	<ul style="list-style-type: none"> <li>• Utilize tactics that minimize impacts to critical natural resources, specifically:                             <ul style="list-style-type: none"> <li>◦ Sacajawea's bitterroot (<i>Lewisia sacajawean</i>) habitat</li> <li>◦ Critical Bull Trout habitat</li> <li>◦ Whitebark Pine (<i>Pinus albicaulis</i>)</li> <li>◦ Canada lynx (<i>Lynx canadensis</i>) habitat</li> </ul> </li> </ul>

Incident Requirement List

Activated	Incident Requirement
07/20/2016	<ul style="list-style-type: none"> <li>• All fire management activities will consider safety of personnel and the public as the highest priority.</li> </ul>
07/20/2016	<ul style="list-style-type: none"> <li>• Develop Management Action Points (MAP's) that provide ample time to implement identified procedures to ensure fire fighter and public safety and the protection of values at risk. These actions may include pre-evacuation and/or evacuation notifications to communities and general recreationists in or adjacent to the planning area.</li> </ul>
07/20/2016	<ul style="list-style-type: none"> <li>• Prevent the spread of invasive aquatics and noxious weeds by following the Boise National Forest resource mitigation guide and through mitigations identified by the assigned resource advisors.</li> </ul>
07/20/2016	<ul style="list-style-type: none"> <li>• All retardant use must comply with agency policy and the current identified retardant avoidance areas. Any intrusions of retardant into avoidance areas must be reported by air attack as quickly as reasonably possible. Note Elk Creek and the associated tributaries are the municipal watershed for Idaho City.</li> </ul>
07/20/2016	<ul style="list-style-type: none"> <li>• Maintain positive working relationships with local governments, partners and other Federal Agencies.</li> </ul>
07/20/2016	<ul style="list-style-type: none"> <li>• Provide timely and accurate information to the local communities, Boise County Commissioners, area mining claim holders, and the Boise County Sheriff's office.</li> </ul>

Strategic Objective List

Unit	Shape/ FMU	Activated	Strategic Objective
IDBOD	<Unit>	08/15/2011	<p><b>District Wide</b></p> <ul style="list-style-type: none"> <li>• Firefighter and public safety is the first priority.</li> <li>• Protect private property, cultural and historic resources, developed recreation sites, and other improvements</li> <li>• Protect municipal watersheds and Riparian Habitat Conservation Areas (RHCA).</li> <li>• Protect Special Status Species (refer to FMP for priority sage-grouse habitat and LEPA Management Areas)</li> <li>• Protect the characteristics that warranted WSA, ACEC (including RNAs and ONAs), wilderness, VRM C</li> <li>• Special Recreation Management Area (SRMA) designation.</li> <li>• Protect wild horse habitat and crucial wildlife winter range.</li> <li>• Protect commercial timber.</li> </ul>
IDBOD	Payette	07/13/2012	<p><b>FMU Specific</b></p>



Strategic Objective List

Unit	Shape/ FMU	Activated	Strategic Objective
			<p>Payette FMU is ranked as HIGH priority for suppression due to a very high density of WUI in the Payette River CARs.</p> <p>Response to unplanned ignitions is as follows:</p> <ul style="list-style-type: none"> <li>• Suppress wildland fire in WUI areas.</li> <li>• Suppress wildland fire in potential Canada lynx linkage habitat.</li> <li>• Suppress wildland fire in mule deer and elk critical winter range.</li> </ul>
IDBOF	<Unit>	06/27/2016	<p>Develop strategies and tactics that:</p> <ul style="list-style-type: none"> <li>• Minimize potential for noxious weed spread</li> <li>• Minimize impacts or damage to developed recreation sites</li> <li>• Do not cause long term adverse impacts to wildlife</li> <li>• Minimize long term adverse impacts to water quality</li> <li>• Minimize long term air quality impacts</li> </ul>
IDBOF	<Unit>	06/27/2016	<p>Develop strategies and tactics that:</p> <ul style="list-style-type: none"> <li>• Provide for public safety at all times (limit impact to the public as much as possible and limit public needed)</li> <li>• Minimize exposure of fire fighters to hazards that cannot be mitigated (use the risk management plan, 10 Standard Fire Fighter Orders and mitigate any of the 18 Watch Out Situations present, Adequately Work Rest, Length of Assignment, and Driving Regulation Guidelines.)</li> <li>• Minimize impacts to local community businesses, such as tourism, recreation, and outfitting. Manage focus of cost containment.</li> <li>• Minimize risk and exposure of aviation resources to hazards that cannot be mitigated: identify all flight area, such as powerlines, structure, heavily traveled roadways, and military training routes. Ensure risk</li> <li>• Minimize impacts or damage to improvements in the area: utility corridors, communication sites, and</li> </ul>
IDBOF	<Unit>	06/27/2016	Take all actions to make Fire fighter and public safety the number one priority of the incident.
IDBOF	1	06/27/2016	Allow wildfire to play its natural role where appropriate and desirable to reduce the risk of uncharacteristic Use fire to restore or maintain desirable plant community attributes including fuel levels as well as ecological
IDBOF	2	06/27/2016	Apply strategy and tactics to keep wildland fires from reaching structures, as prudent to do so, consider management for firefighters and publics, fire behavior, values at risk including natural resources, aviation resources, and jurisdictional authorities.
IDBOF	3	06/27/2016	Use the full range of fire management strategies to protect life, investments, and valuable resources including vegetation, fuels, and wildland fire management.
IDSCF	01	06/23/2015	<b>Challis LRMP Chapter IV 188-</b> Fire Management activities in the corridors will be compatible with fire management adjoining areas.
IDSCF	01	06/23/2015	<b>FCRNoR Wilderness Plan; Chapter 2 Pages 22-24-</b> Lightning caused fires will be permitted to play, as near natural ecological role within the FC-RONRW.
IDSCF	01	06/23/2015	<b>FCRNoR Wilderness Plan; Chapter 2 Pages 22-24-</b> Suppression actions will be taken where lightning-caused threats to life and/or property within wilderness or to life, property, or natural resources outside of wilderness are fires. The appropriate management response will be timely, effective and efficient, providing for safety first.
IDSCF	01	06/23/2015	<b>FCRNoR Wilderness Plan; Chapter 2 Pages 22-24-</b> Restrict fire prevention and signing and contacts to wilderness portals, except where essential to wilderness preservation and resource protection. Reduce interior visitor contact practical.
IDSCF	01	06/23/2015	<b>FCRNoR Wilderness Plan Chapter 2 Pages 22-24-</b> Prescribed fire will be used to reduce unnatural buildup necessary to reduce the risks and consequence of wildfire to an acceptable level and only where the use of prescribed fuel treatment measures outside of wilderness is not sufficient to achieve fire management objectives within wilderness.
IDSCF	01	06/23/2015	<b>FCRNoR Wilderness Plan; Chapter 2 Pages 22-24-</b> The appropriate management response and corresponding consider the impacts of that action on the wilderness resource. Minimum Impact Management Techniques will be used whenever suppression actions are taken.
IDSCF	01	06/23/2015	<b>FCRNoR Wilderness Plan; Chapter 2 Pages 22-24-</b> Coordinate proposed fire closures and restrictions with adjoining areas.
IDSCF	03	06/23/2015	<b>Challis LRMP Chapter IV 188-</b> Fire Management activities in the corridors will be compatible with fire management adjoining areas.
IDSCF	03	06/23/2015	<b>Challis LRMP Chapter IV 8 Protection- A)</b> Provide fire suppression action on all wildfires which is cost effective and property. <b>B)</b> Each wildfire ignition will receive an appropriate response. (Confinement, containment, control) the wildfire escapes initial attack, the suppression decision will be based on an escaped fire situation analysis. suppression will be based on resource values, costs, burning conditions, safety, protection of private property and fire organization availability.

Strategic Objective List

Unit	Shape/ FMU	Activated	Strategic Objective
IDSCF	03	06/23/2015	<b>Challis LRMP Chapter IV 8 Protection-</b> Use prescribed fire to accomplish resource management objectives
IDSCF	03	06/23/2015	<b>Challis LRMP Chapter IV 28 Protection-</b> Fire protection activities on parcels of land administered by one agency or another agency will be protected in accordance with the protecting agency policy.
IDSTF	<Unit>	06/26/2015	<p><b>Goals</b></p> <p>FMGO01 Firefighter and public safety is the priority in all fire management activities.</p> <p>FMGO02 Allow fire to play its natural role where appropriate and desirable to reduce the risk of uncharacteristic wildland fires.</p> <p>FMGO03 Use fire alone or with other management activities to restore or maintain desirable plant communities and fuel levels, as well as ecological processes (see Vegetation Goals).</p> <p>FMGO04 Use fire alone or with other management activities to treat natural and activity fuels to a level that is not uncharacteristic or undesirable wildland fires.</p> <p>FMGO05 Provide for protection of life, investments, and valuable resources through appropriate vegetation, fuels, and fire management.</p> <p>FMGO06 Encourage and participate in partnerships with citizens or community-centered approaches to manage fuels in wildland/urban interface areas.</p>
IDSTF	<Unit>	06/26/2015	<p><b>Objectives</b></p> <p>FMOB01 Reduce fire fighter and public injuries and loss of life, and damage to communities from severe, unwanted wildland fires by prioritizing fire fighter, public, and community safety above other community management activities.</p> <p>FMOB03 Following identification of areas where wildland fire use is appropriate within management areas, develop and implement areas between management areas to fully describe the extent of wildland fire use implementation in the Fire Management Plan. Develop the necessary implementation information for the areas in the Fire Management Plan.</p> <p>FMOB05 Continue to identify high fire hazard areas in wildland/urban interface areas. Develop and prioritize treatment plans in coordination with local and tribal governments, agencies, and landowners to reduce the risk of wildland fire.</p> <p>FMOB06 Enhance public awareness of the fundamental importance of fire through educational programs and activities in the ecosystem.</p> <p>FMOB07 Coordinate vegetation management activities and partnership opportunities with local land managers to reduce wildland fire suppression and use, and prescribed fire.</p>
IDSTF	Conditional	06/07/2016	Opportunistically utilize wildland fire to restore or maintain desired conditions and to reduce fuel loadings. Management activities within these areas commensurate with the values at risk and utilize fire for restoration purposes when conditions are appropriate. Sites that warrant higher levels of protection may occur within the boundaries of Conditional areas and action plans for these sites will be taken without compromising the intent of this objective. Additional site specific management requirements may affect the strategic and tactical options available to incident responders.
IDSTF	Limited	06/07/2016	Based upon the low density and wide distribution of values to be protected allow fire to play, as nearly as possible, its natural ecological role. Sites that warrant higher levels of protection may occur within the boundaries of Limited areas and action plans for these sites will be taken without compromising the intent of this objective. Additional site specific management requirements may affect the strategic and tactical options available to incident responders.

Management Requirement List

Unit	Shape/FMU	Activated	Management Requirement
	Aqua Retardant Avoidance	06/18/2013	The aerial application of fire retardant is allowed for fighting fires. Aerially delivered fire retardant should not be applied to any mapped aquatic avoidance area, waterway or buffer. The only exception to using aerially applied fire retardant in avoidance areas is <b>for the protection of human life or public safety</b> . The Incident Commander is the decision maker.

Unit	Shape/FMU	Activated	Management Requirement
			Information concerning the Record of Decision for the Aerial Application of Fire Retardant is available at <a href="http://www.fs.fed.us/fire/retardant/index.html">http://www.fs.fed.us/fire/retardant/index.html</a>
	Retardant Avoidance	05/31/2012	The aerial application of fire retardant is allowed for fighting fires. Aerially delivered fire retardant should not be applied to any mapped terrestrial avoidance area, waterway or buffer. The only exception to using aerially applied fire retardant in avoidance areas is <b>for the protection of human life or public safety</b> . The Incident Commander is the decision maker.  Information concerning the Record of Decision for the Aerial Application of Fire Retardant is available at <a href="http://www.fs.fed.us/fire/retardant/index.html">http://www.fs.fed.us/fire/retardant/index.html</a>
IDBOD	<Unit>	08/15/2011	<p><b>District Wide</b></p> <ul style="list-style-type: none"> <li>• Extinguish fires with the least amount of surface disturbance possible.</li> <li>• In order to minimize risk to firefighters and to reduce wildland fire suppression costs, allow wildland fires to burn to natural fuel breaks where and when it is appropriate.</li> <li>• Use Minimum Impact Suppression Tactics (MIST) when appropriate to mitigate potential adverse effects of fire suppression on values at risk. Areas where MIST may be used include Snake River BOPNCA, <i>Lepidium papilliferum</i> Management Areas (MAs), RHCAs, WSAs, certain ACECs (including RNAs and ONAs), wilderness, cultural sites such as the Oregon Trail NHT, areas with soils at high risk for erosion, and suitable wild and scenic river corridors.</li> <li>• Do not use aerial foam or retardant within 300 feet of lakes, rivers, streams, ponds, and wetlands. Exceptions would be made to protect lives and property, ensure firefighter safety, or when potential damage to natural resources outweighs possible loss of aquatic life.</li> <li>• Consult appropriate resource specialists to ensure that resource management concerns are adequately addressed and that necessary mitigation of suppression activities occurs. They will initiate emergency consultation with the USFWS whenever suppression activities impact SSS habitat.</li> <li>• Minimize the spread of annual grasses and other invasive non-native species. Equipment used for suppression and prescribed fire will be cleaned before arriving on-site, and before demobilization; where possible vehicle wash stations will be set up in base camps. Staging areas and fire camps should be located on sites free of invasive non-native species.</li> <li>• The resource advisor will coordinate with the BLM archeologist to determine areas of potential conflict between archeological resources and fire suppression activities. Resource advisors will contact the cultural resources specialist prior to implementing any fire suppression activities to gather information on types of sites and their locations on the landforms and will continue contact with the archeologist during the duration of fire suppression activities. The resource advisor will coordinate with the BLM archeologist regarding consultation with the SHPO and Native American groups.</li> <li>• Educate firefighters about risks associated with abandoned minelands. Avoid tailings ponds as water sources for fire suppression.</li> <li>• Support tribal trust obligations with fire management activities or otherwise address tribal interests.</li> <li>• Maintain interagency cooperation to facilitate coordinated fire management activities across administrative boundaries.</li> <li>• Maintain constructive interagency and local community relationships.</li> </ul>
IDBOD	<Unit>	06/27/2016	<p><b>Greater Sage-grouse Habitat (refer to WFDSS Sage Grouse Habitat layer to determine if these management requirements apply)</b></p> <p><i>Direction from the 2015 Idaho and Southwest Montana GRSG Approved RMP Amendment (2015 IDMT ARMPA)</i></p> <ul style="list-style-type: none"> <li>• <b>Objective FIRE 2:</b>Manage wildfires to minimize loss of sagebrush and protect GRSG habitat (p. 2-19, 2015 IDMT ARMPA). This will most often be accomplished by suppressing fires at the smallest size possible to minimize loss of habitat.</li> <li>• <b>Objective VEG 3:</b>In all Sagebrush Focal Areas (SFAs) and Priority Habitat Management Areas (PHMAs), the desired condition is to maintain all lands ecologically capable of producing sagebrush (but no less than 70%) with a minimum of 15% sagebrush canopy cover or as consistent with specific ecological site conditions (p. 2-16, 2015 IDMT ARMPA).</li> <li>• <b>MD FIRE 14:</b>Utilize a full range of fire management strategies and tactics through strategic wildfire suppression planning consistent with appropriate management</li> </ul>

Unit	Shape/FMU	Activated	Management Requirement
			<p>response and within acceptable risk levels, to achieve resource objectives for GRSG habitat consistent with land use plan direction. Utilizing both direct and indirect attack as appropriate to limit the overall amount of GRSG habitat burned. This can include suppressing fires in intact sagebrush habitats; limiting fire growth in GHMA when suppression resources are available or managing wildfire for resource benefit in areas of conifer (juniper) encroachment (p. 2-20, 2015 IDMT ARMPA).</p> <ul style="list-style-type: none"> <li>• <b>MD FIRE 15:</b>Suppression priorities: The protection of human life is the single, overriding priority. Setting priorities among protecting human communities and community infrastructure, other property and improvements, and natural and cultural resources will be done based on the values to be protected, human health and safety, and the costs of protection. Maintaining GRSG habitat will be the highest natural resources priority immediately after human life and property, commensurate with threatened and endangered species habitat or other critical habitats to be protected (p. 2-20, 2015 IDMT ARMPA).</li> <li>• <b>MD Fire 16:</b>Ensure close coordination with federal and state firefighters including the Rangeland Fire Protection Associations during suppression activities (p. 2-20, 2015 IDMT ARMPA).</li> </ul>
IDBOD	Payette	07/13/2012	<p><b>FMU Specific</b></p> <ul style="list-style-type: none"> <li>• All extended attack suppression actions should ensure a resource advisor is present and follow MIST guidelines where appropriate, including: <ul style="list-style-type: none"> <li>◦ Soils at high risk for erosion.</li> <li>◦ Cultural sites.</li> <li>◦ Box Creek WSA.</li> </ul> </li> <li>• Suppress FILs 1-6 at &lt;20 acres 90 % of the time.</li> </ul>
IDBOF	<Unit>	06/27/2016	Coordinate with adjacent land management agencies to develop compatible wildland fire management strategies. Depending on fire location, neighbors include: the Salmon-Challis, Sawtooth, and Payette National Forests, BLM, State of Idaho and/or County.
IDBOF	<Unit>	06/27/2016	Provide containment measures to limit the spread of noxious weed spread.
IDBOF	<Unit>	06/27/2016	Contractors shall be required to clean earth-disturbing, construction, and road maintenance equipment, of all sizes, to remove all plant parts, dirt, and material that may carry noxious weed seeds, prior to entry onto the Forest, or movement from one Forest project area to another.
IDBOF	<Unit>	06/27/2016	Develop strategies and tactics that minimize ground disturbing activities, such as dozer line, that do not cause long term adverse impacts to sensitive travel routes or use areas assigned the Retention or Preservation Visual Quality Objectives (VQO's), unless Line Officer or designee determines that imminent threat to human life or property exists.
IDBOF	<Unit>	06/27/2016	Avoid applications of fire chemicals within 300 feet of streams, ponds, or lakes, unless Line Officer or designee determines that imminent threat to human life or property exists.
IDBOF	<Unit>	06/27/2016	Heavy equipment shall not be used to construct fireline within Riparian Conservation Areas (RCAs), unless Line Officer or designee determines imminent threat to human life or protection of structures. Incident bases, camps, helibases, staging areas, helispots, and other centers for incident activities shall be located outside RCA's unless the only suitable location for such activities is determined and documented by the line officer or designee to be within the RCA.
IDBOF	<Unit>	06/27/2016	All drafting from TEPC fish-bearing streams will require 3/32" screening in large fire suppression operations, unless: Line Officer or designee determines that an imminent threat to human life or property exists, and approves of unscreened drafting.
IDBOF	<Unit>	06/27/2016	Water dipping points and criteria for determining dipping points, shall be identified in the operation resources for TEPC fish-bearing streams and occupied TEPC aquatic plant habitat. In situations where dipping points have not been approved in advance, the operational resources criteria for dipping points shall be used until the line officer or designee can approve sites following a review and recommendation by a resource advisor, unless the line officer or designee determines that imminent safety to human life or protection of structures is an issue.

Management Requirement List

Unit	Shape/FMU	Activated	Management Requirement
IDBOF	1.1	06/27/2016	MPC 1.1: Coordinate with the Salmon-Challis National Forest to develop fire suppression strategies and tactics in accordance with the Frank Church River of No Return Wilderness Management Plan. (MPC 1.1 - Existing Wilderness)
IDBOF	1.2 FPSA	06/27/2016	MPC 1.2 Inventoried Roadless Area (IRA) Forest Plan Special Areas: Emphasize tactics that minimize impacts of suppression on the river corridors Classification and Outstanding Remarkable Values (ORV). (MPC - Eligible Wild Scenic Rivers)
IDBOF	1.2 WLR	06/27/2016	MPC 1.2 Inventoried Roadless Area (IRA)- Wild Land Recreation: Emphasize tactics that minimize impacts of suppression on wilderness values, i.e. use MIST. (MPC 1.2- Recommended Wilderness)
IDBOF	2.2	06/27/2016	MPC 2.2: Emphasize strategies and tactics that minimize impacts to the values for which the RNA was established. (MPC 2.2 Research Natural Areas)
IDBOF	2.4	06/27/2016	MPC 2.4: Boise Experimental Forest - Coordinate with the Scientist-in-Charge of the Boise Basin Experimental Forest (RMRS) and emphasize strategies and tactics that minimize impacts to the values for which the Boise Basin Experimental Forest was established and other investments. (MPC 2.4 Boise Basin Experimental Forest)
IDBOF	3.1 BCR	06/27/2016	MPC 3.1 Inventoried Roadless Area (IRA)- Backcountry Restoration: Emphasize strategies and tactics that minimize impacts to aquatic, terrestrial or watershed resources, i.e. use MIST. (MPC 3.1- Passive Restoration and Maintenance of Aquatic, Terrestrial and Hydrologic Resources).
IDBOF	3.1 FPSA	06/27/2016	MPC 3.1 Inventoried Roadless Area (IRA) Forest Plan Special Areas: Emphasize tactics that minimize impacts of suppression on the river corridors Classification and Outstanding Remarkable Values (ORV). (MPC - Eligible Wild Scenic Rivers)
IDBOF	3.2	06/27/2016	MPC 3.2: Emphasize strategies and tactics that minimize impacts to aquatic, terrestrial, or watershed resources, i.e. use MIST. (MPC 3.2 - Active Restoration/Maintenance of Aquatic, Terrestrial, and Hydrologic Resources)
IDBOF	3.2 BCR	06/27/2016	MPC 3.2 Inventoried Roadless Area (IRA)- Backcountry Restoration: Emphasize strategies and tactics that minimize impacts to aquatic, terrestrial, or watershed resources, i.e. use MIST. (MPC 3.2- Active Restoration/Maintenance of Aquatic, Terrestrial, and Hydrologic Resources)
IDBOF	3.2 FPSA	06/27/2016	MPC 3.2 Inventoried Roadless Area (IRA) Forest Plan Special Area: Emphasize tactics that minimize impacts of suppression on the river corridors Classification and Outstanding Remarkable Values (ORV). (MPC - Eligible Wild Scenic Rivers)
IDBOF	4.1c FPSA	06/27/2016	MPC 4.1c: Inventoried Roadless Area (IRA) Forest Plan Special Area: Emphasize tactics that minimize impacts of suppression on the river corridors Classification and Outstanding Remarkable Values (ORV). (MPC - Eligible Wild Scenic Rivers)
IDBOF	4.1c P	06/27/2016	MPC 4.1c Inventoried Roadless Area (IRA)- Primitive: Emphasize tactics that minimize impacts of suppression activities on the unroaded landscape, i.e. limit the development of dozer line. However, dozer use may be allowed if terrain and vegetation allow for rehabilitation of dozer line to the point that the landscape retains its unroaded character. (MPC 4.1c - Maintain Unroaded Character with Allowance for Restoration Activities)
IDBOF	4.2	06/27/2016	MPC 4.2: Emphasize strategies and tactics that minimize impacts to recreation developments and investments. (MPC 4.2 - Roaded Recreation Emphasis)
IDBOF	5.1 FPSA	06/27/2016	MPC 5.1 Inventoried Roadless Area (IRA) Forest Plan Special Area: Emphasize tactics that minimize impacts of suppression on the river corridors Classification and Outstanding Remarkable Values (ORV). (MPC - Eligible Wild Scenic Rivers)
IDBOF	5.1 GFRG nonWUI	06/27/2016	MPC 5.1 Inventoried Roadless Area (IRA) - General Forest, Rangeland, and Grassland: Emphasize strategies and tactics that minimize impacts to developments and investments. (MPC 5.1 - Restoration and Maintenance Emphasis within Forested Landscapes)
IDBOF	5.1 GFRG WUI	06/27/2016	MPC 5.1 Inventoried Roadless Area (IRA)- General Forest Rangeland and Grassland (CPZ): Emphasize strategies and tactics inside the Community Protection Zone (CPZ) that minimize impacts to developments and investments. Outside CPZ emphasize strategies and tactics that minimize impacts of



Management Requirement List

Unit	Shape/FMU	Activated	Management Requirement
IDBOF	5.1 North	06/27/2016	suppression activities on the unroaded landscape. (MPC 5.1 - Restoration and Maintenance Emphasis within Forested Landscapes)
IDBOF	5.1 South	06/27/2016	MPC 5.1: Emphasize strategies and tactics that minimize impacts to developments and investments. (MPC 5.1 - Restoration and Maintenance Emphasis within Forested Landscapes)
IDBOF	Bear Valley Subunit	06/27/2016	Bear Valley Subunit - Use fire to maintain the existing large tree component and to perpetuate patch dynamics created by the recent fires.
IDBOF	Trapper Flat Subunit	06/27/2016	Trapper Flat Subunit- Use low to moderate intensity, patchy fire that creates areas of mineral soil but does not damage the whitebark pine stands to this species. High intensity patch size should be limited to less than 200 acres.
IDBOF	Wild Scenic	06/27/2016	Eligible and Suitable Wild and Scenic Rivers: Emphasize tactics that minimize impacts of suppression on the river corridors Classification and Outstanding Remarkable Values (ORV). (MPC - Eligible Wild Scenic Rivers and MPC-Suitable Wild and Scenic Rivers)
IDSCF	<Unit>	03/27/2014	All fire management activities will be conducted in accordance with the <i>"Programmatic Biological Assessment for Wildfire Suppression on the Salmon- Challis National Forest"</i> .
IDSCF	<Unit>	03/27/2014	All Misapplications of Fire Retardant will be reported to the local resource advisor and reporting will be completed in accordance with the <i>"Implementation Guide for Aerial Application of Fire Retardant"</i> .
IDSTF	<Unit>	06/26/2015	<p><b>Standards</b> FMST01 Once a decision in the Wildland Fire Decision Support System (WFDSS) is approved, heavy equipment shall not be used to construct firelines within Riparian Conservation Areas (RCAs) unless:</p> <ul style="list-style-type: none"> <li>a) The line officer or designee determines that imminent safety to human life or protection of structures is an issue; OR</li> <li>b) The incident resource advisor determines and documents an escaped fire would cause more degradation to RCAs than would result from the disturbance of heavy equipment.</li> </ul> <p>In no case will the decision to use heavy equipment in RCAs be delayed when the line officer or designee determines safety or loss of human life or protection of structures is at imminent risk. (<b>Modified</b> as part of 2012 Forest Plan amendment for WCS.)</p> <p>FMST02 Once a WFDSS decision is approved, incident bases, camps, helibases, staging areas, helispots, and other centers for incident activities shall be located outside RCAs unless the only suitable location for such activities is determined and documented by the line officer or designee to be within an RCA. In no case will the decision to place these activities inside an RCA be delayed when the line officer or designee determines safety or loss of human life or structures is at imminent risk. (<b>Modified</b> as part of 2012 Forest Plan amendment for WCS.)</p> <p>FMST03 Once a WFDSS decision is approved, avoid delivery of chemical retardant, foam, or additives to all surface waters within RCAs unless:</p> <ul style="list-style-type: none"> <li>a) The line officer or designee determines that imminent safety to human life or protection of structures is an issue; OR</li> <li>b) The incident resource advisor determines and documents an escaped fire would cause more degradation to an RCA, than would be caused by addition of chemical, foam or additive delivery to surface waters in RCAs.</li> </ul>



Management Requirement List

Unit	Shape/FMU	Activated	Management Requirement	
				In no case will the decision to avoid delivery of chemical retardant, foam or additives to surface waters within RCAs be delayed when the line officer or designee determines safety or loss of human life or protection of structures is at imminent risk. <b>(Modified</b> as part of 2012 Forest Plan amendment for WCS.)
IDSTF	<Unit>	06/26/2015	Standards	<p>TEST21 Water dipping points and criteria for determining dipping points, shall be identified in the operation resources for TEPC fish-bearing streams and occupied TEPC aquatic plant habitat. In situations where dipping points have not been approved in advance, the operational resources criteria for dipping points shall be used until the line officer or designee can approve sites following a review and recommendation by a resource advisor, unless the line officer or designee determines that imminent safety to human life or protection of structures is an issue.</p> <p>NPST05 During WFDSS development, identify noxious weed control and mitigation measures. Ensure their implementation through direction in the Letter of Delegation and the Incident Overhead Team briefing. <b>(Modified</b> as part of 2012 Forest Plan amendment for WCS.)</p>
IDSTF	MPC 2.1 Wild&Scenic Rivers	05/02/2016	Fire Guideline	The full range of fire suppression strategies may be used to suppress wildfires. Emphasize strategies and tactics that minimize the impacts of suppression activities on river classifications and ORVs.
			Fire Guideline	Prescribed fire and wildland fire may be used in any river corridor as long as ORVs are maintained within the corridor. <b>(Modified</b> as part of the 2012 WCS amendment)
IDSTF	MPC 3.1	06/05/2014	Passive Restoration and Maintenance of Aquatic, Terrestrial and Hydrologic Resources MPC 3.1 Standards and Guideline	
			Standard	<p>Wildland fire use and prescribed fire may only be used where they:</p> <p>a) Maintain or restore water quality needed to fully support beneficial uses and habitat for native and desired non-native fish species, or</p> <p>b) Maintain or restore habitat for native and desired non-</p>

Management Requirement List

Unit	Shape/FMU	Activated	Management Requirement
			<p>native wildlife and plant species.</p> <p>Standard Road construction or reconstruction may only occur where needed:</p> <p>a) To provide access related to reserved or outstanding rights, or</p> <p>b) To respond to statute or treaty, or</p> <p>c) To address immediate response situations where, if the action is not taken, unacceptable impacts to hydrologic, aquatic, riparian or terrestrial resources, or health and safety, would result.</p> <p>Guideline The full range of fire suppression strategies may be used to suppress wildfires. Emphasize suppression strategies and tactics that minimize impacts on aquatic, terrestrial, or watershed resources.</p>
IDSTF	MPC 4.1C	06/05/2014	<p>Undeveloped Recreation: Maintain Unroaded Character with Allowance for Restoration Activities</p> <p>MPC 4.1c Standards and Guidelines</p>

Management Requirement List

Unit	Shape/FMU	Activated	Management Requirement
			<p>Standard Management actions—including mechanical vegetation treatments, salvage harvest, wildland fire use, prescribed fire, special use authorizations, and road maintenance—must be designed and implemented in a manner that would be consistent with the unroaded landscape in the temporary, short term, and long term. Exceptions to this standard are actions in the 4.1c road standards, below.</p> <p>Guideline The full range of fire suppression strategies may be used to suppress wildfires. Emphasize tactics that minimize impacts of suppression activities on the unroaded landscape.</p> <p>Standard Within Inventoried Roadless Areas (IRAs), road construction or reconstruction may only occur where needed:</p> <ul style="list-style-type: none"> <li>a) To provide access related to reserved or outstanding rights, or</li> <li>b) To respond to statute or treaty.</li> </ul> <p>Standard Outside IRAs, road construction or reconstruction may only occur where needed:</p> <ul style="list-style-type: none"> <li>a) To provide access related to reserved or outstanding rights, or</li> <li>b) To respond to statute or treaty, or</li> <li>c) To provide transportation systems that support accomplishment of Management Area ROS objectives.</li> </ul>
IDSTF	MPC 4.2	06/05/2014	<p>Roaded Recreation Emphasis</p> <p>MPC 4.2 Standard and Guideline</p> <p>Standard Vegetation management actions—including wildland fire use, prescribed fire, and mechanical treatments—may be used to maintain or restore desired vegetation and fuel conditions provided they do not prevent achievement of recreation resource objectives.</p> <p>Guideline The full range of fire suppression strategies may be used to suppress wildfires. Emphasize strategies and tactics that minimize impacts to recreation developments and investments.</p>
IDSTF	MPC1.1	05/02/2016	<p>MPC 1.1 Existing Wilderness</p> <p>Guideline Natural ignited fires will be considered prescribed natural fire unless conditions determine wildfire status as identified in the Fire Management Action Plan.</p> <p>Guideline Prescribed natural fires are monitored and permitted to burn while in prescription.</p> <p>Guideline Confine or contain wildfire spread within natural barriers unless additional measures are necessary to protect life and/or property values.</p> <p>Guideline Conduct all fire management activities in a manner compatible with wilderness management objectives. Preference will be given to methods and equipment that least alter the wilderness landscape or disturb the land surface, including the use of fugitive retardants when determined necessary.</p> <p>Guideline Fire suppression will avoid the use of heavy mechanized equipment, such as bulldozers. Preference will be given to water and uncolored retardant drops over retardant with dye.</p> <p>Guideline Locate fire camps, helispots, and other temporary facilities or improvements outside of wilderness whenever feasible.</p>

Management Requirement List

Unit	Shape/FMU	Activated	Management Requirement
			<p>Guideline Rehabilitate areas to as natural a condition as possible when the following conditions are met, or to protect life and/or property outside of wilderness:</p> <ul style="list-style-type: none"> <li>a. Disturbance is due to suppression activities.</li> <li>b. An Interdisciplinary Team of resource specialists, including a Wilderness Specialist, has evaluated and recommended the objectives and proposed methods of rehabilitation.</li> </ul>
IDSTF	MPC1.1	05/02/2016	<p>MPC 1.1 Existing Wilderness</p> <p>Guideline Seeding of burned areas will normally not be permitted. Approve seeding with native endemic species mix only.</p> <p>Guideline Increase public understanding about the role of fire, fire management inside and outside wilderness, and fire effects, allowing wilderness users to observe and experience the effects of fire to the extent possible.</p> <p>Guideline Provide protection to life, public safety, and private property from the threat of fire.</p> <p>Guideline Signing and contacts will be restricted to portals except where essential for wilderness preservation, visitor safety, and resource protection.</p> <p>Guideline In the event of an emergency where evacuation appears necessary, a helicopter may be dispatched, working with the appropriate counties. Where danger is not imminent a wilderness ranger will be dispatched.</p> <p>Guideline Appropriate suppression response and Minimum Impact Management Techniques (M.I.M.T.) are used to suppress wildfires and to monitor prescribed natural and management-ignited fires, including travel to and from fires (response to national or regional direction may dictate alternate travel methods in cases of extreme emergency).</p> <p>Guideline Detection of fire using aerial patrol after lightning storms and periods of high fire danger may occur. All flights for reconnaissance, crew transport, monitoring, etc. will be kept to the minimum number possible, at the highest level possible (minimum 500 ASL), with minimal disturbance to visitor wilderness experience.</p> <p>Guideline A Wilderness Resource Advisor will be assigned to monitor and work with the Prescribed Fire Manager on every Fire Use fire or wildfire in wilderness.</p> <p>Guideline Fires caused by natural starts outside of the wilderness may be allowed to enter into the wilderness as prescribed natural fire under defined prescriptions.</p>
IDSTF	MPC1.2	03/25/2013	<p>Recommended Wilderness Standards and Guideline</p> <p style="text-align: right;">MPC 1.2</p> <p>Standard Management actions, including wildland fire use and prescribed fire, must be designed and implemented in a manner that maintains wilderness values, as defined in the Wilderness Act.</p> <p>Standard Mechanical vegetation treatments, including salvage harvest, are prohibited.</p> <p>Standard Road construction or reconstruction may only occur where needed:</p> <ul style="list-style-type: none"> <li>a) To provide access related to reserved or outstanding rights, or</li> <li>b) To respond to statute or treaty.</li> </ul> <p>Standard No new motorized or mechanical uses will be allowed, except where these uses must be allowed in response to reserved or outstanding rights, statute, or treaty.</p> <p>Standard Existing motorized or mechanical uses are allowed only if they do not lead to long-term adverse changes in wilderness values.</p>

Management Requirement List

Unit	Shape/FMU	Activated	Management Requirement	
			Guideline	The full range of fire suppression strategies may be used to suppress wildfires. Emphasize tactics that minimize the impacts of suppression activities on wilderness values.
IDSTF	Public Water Supply	04/09/2013		Notify Duty Officer, Line Officer if any of the following occur: retardant, chemical or surfactant release into surface water within the mapped boundaries of Public Water Supplies. The Line Officer will notify DEQ if any of the above occurs.
IDSTF	Spawning Areas of Concern	04/09/2013		<p>The following applies to Spawning Areas of Concern:</p> <ul style="list-style-type: none"> <li>• During the Chinook and bull trout spawning periods (August 1 to September 30) dipping should not occur in sensitive spawning areas unless safety, loss of human life, or protection of structures is at imminent risk.</li> <li>• If dipping and drafting does occur, the District Fire Duty Officer will contact an aquatic resource specialist or resource advisor by the end of the first operational period of initial attack. The resource specialist will work with the Duty Officer and fire management resources to identify appropriate dipping and drafting locations which can then be utilized in remaining fire suppression efforts.</li> <li>• For the purpose of implementing this guidance on extended attack incidents, the resource advisor will work with the IC or IMT depending on the complexity of the incident.</li> </ul> <p>(Biological Assessment/ Biological Evaluation of the Effects to Threatened, Endangered, and Proposed Species: Programmatic for Wildfire Management Activities on the Boise and Sawtooth National Forests page 12)</p>
IDSTF	TEPC Fish Payette&MiddleBoise	05/04/2016	Standard TEST19	<p>Once a WFDSS decision is approved, hoses used to draft water from TEPC fish-bearing streams for suppression activities shall be screened with the most appropriate mesh size (generally 3/32), or as determined through coordination with NMFS and/or FWS, unless:</p> <ul style="list-style-type: none"> <li>a) The line officer or designee determines that imminent safety to human life or protection of structures is an issue; OR</li> <li>b) The incident resource advisor determines and documents an escaped fire would cause more degradation to TEPC fish and their habitat than risk to individuals within TEPC fish-bearing streams affected by the use of unscreened, or inappropriately screened, draft hoses.</li> </ul> <p>In no case will the decision to use draft hoses without screening in TEPC fish-bearing streams be delayed when the line officer or designee determines safety or loss of human life or protection of structures is at imminent risk. <b>(Modified</b> as part of the 2012 Forest Plan Amendment for WCS)</p>
			Standard TEST20	<p>Once a WFDSS decision is approved, avoid delivery of chemical retardant, foam, or additives to all surface waters with direct drainage to TEPC fish bearing streams or occupied aquatic TEPC plant habitat unless:</p> <ul style="list-style-type: none"> <li>a) The line officer or designee determines that imminent safety to human life or protection of structures is an issue; OR</li> <li>b) The incident resource advisor determines and documents an escaped fire would cause more degradation to TEPC fish and their habitat, or occupied aquatic TEPC plant habitat, than would be caused by chemical, foam or additive delivery to waters containing these TEPC fish or plants.</li> </ul> <p>In no case will the decision to avoid delivery of chemical retardant, foam or additives to TEPC fish bearing waters or occupied TEPC aquatic plant habitat be delayed when the line officer or designee determines safety or loss of human life or protection of structures is at imminent risk. <b>(Modified</b> as part of the 2012 Forest Plan Amendment for WCS)</p>
IDSTF	TEPC Fish UpperSalmon	05/04/2016	Standard TEST19	Once a WFDSS decision is approved, hoses used to draft water from TEPC fish-bearing streams for suppression activities shall be

Management Requirement List

Unit	Shape/FMU	Activated	Management Requirement
			<p>screened with the most appropriate mesh size (generally 3/32), or as determined through coordination with NMFS and/or FWS, unless:</p> <p>a) The line officer or designee determines that imminent safety to human life or protection of structures is an issue; OR</p> <p>b) The incident resource advisor determines and documents an escaped fire would cause more degradation to TEPC fish and their habitat than risk to individuals within TEPC fish-bearing streams affected by the use of unscreened, or inappropriately screened, draft hoses.</p> <p>In no case will the decision to use draft hoses without screening in TEPC fish-bearing streams be delayed when the line officer or designee determines safety or loss of human life or protection of structures is at imminent risk. <b>(Modified</b> as part of the 2012 Forest Plan Amendment for WCS)</p>
		Standard	<p>TEST20 Once a WFDSS decision is approved, avoid delivery of chemical retardant, foam, or additives to all surface waters with direct drainage to TEPC fish bearing streams or occupied aquatic TEPC plant habitat unless:</p> <p>a) The line officer or designee determines that imminent safety to human life or protection of structures is an issue; OR</p> <p>b) The incident resource advisor determines and documents an escaped fire would cause more degradation to TEPC fish and their habitat, or occupied aquatic TEPC plant habitat, than would be caused by chemical, foam or additive delivery to waters containing these TEPC fish or plants.</p> <p>In no case will the decision to avoid delivery of chemical retardant, foam or additives to TEPC fish bearing waters or occupied TEPC aquatic plant habitat be delayed when the line officer or designee determines safety or loss of human life or protection of structures is at imminent risk. <b>(Modified</b> as part of the 2012 Forest Plan Amendment for WCS)</p>

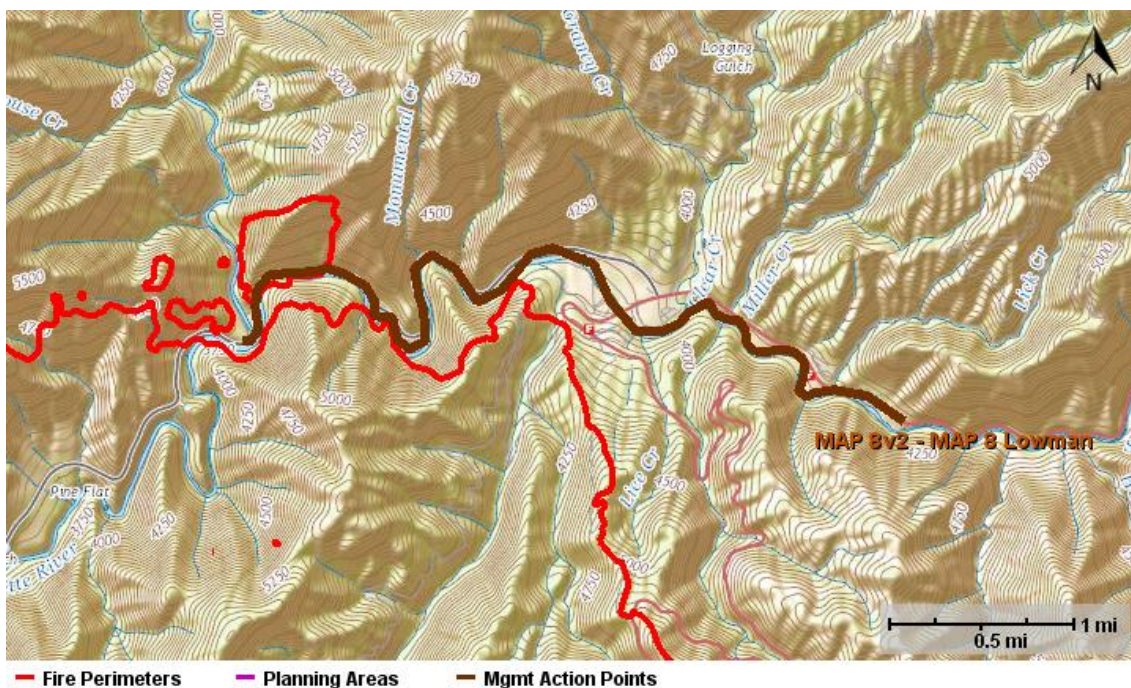


## 1.6. Course of Action

### Course of Action

Active	Inactive	Action Item
07/20/2016		<p>Employ suppression strategies that will utilize tactics and locations that have a high probability of success, while considering the exposure to responders.</p> <p>Employ suppression tactics to minimize adverse impacts to identified resource values within the planning area.</p>
08/06/2016		<p>While employing strategies that have a high probability of success and consider exposure to responders, the following areas have been identified as priorities:</p> <ol style="list-style-type: none"> <li>1. Lowman and the Deadwood River corridor</li> <li>2. Jackson Creek and Trapper Flat</li> <li>3. Garden Valley and Pioneerville</li> <li>4. Idaho City and Sunset</li> </ol>

### Management Action Point 8v2



NAME	VALUE
Incident Name	PIONEER
Cost	
Shape	MAP 8 Lowman
Activated	08/06/2016
Deactivated	

### Condition

Fire continues to spread north of Highway 17 and is anticipated to spread east towards Lowman

### Actions

#### Management Action Point 8

- Continue communications with Boise County Sheriff, Lowman District Ranger (John Kidd), Idaho City District Ranger (Brant Petersen) and Pioneer Incident Commander the need to implement Level 3 evacuations within impacted area.

- Consider closing/restricting Highway 17 from Lowman to Garden Valley and Highway 21 north to Forest Service District office.
- Request Lowman Fire Department provide structural protection resources.
- Request Boise County Emergency Coordinator notify Idaho Department of Lands of the fire threat to structures and possible need to order a Strike Team of structural engines.
- Contact Idaho Power Company that there may be a need to de-energize powerlines within the Lowman area.
- Consider Level 1 evacuation from Deadwood River confluence north to Long Creek Summer homes then south to Old Ranger Station Road Heliport.
- Evaluate the need to expand Pioneer Fire Closure Order to the north on the Lowman/Emmett Ranger Districts.
- Consider structure protection for Deadwood lookout
- Consider public safety and protection of infrastructure at Park Creek Campground

## Resources

Consider the following resources but base organization on complexity and current/expected fire behavior:

1 - DIVS

1 - STPS

2 - TFLD

4 - Type 3 Engines

2 - Type 4 Engines

2 - Type 6 Engines

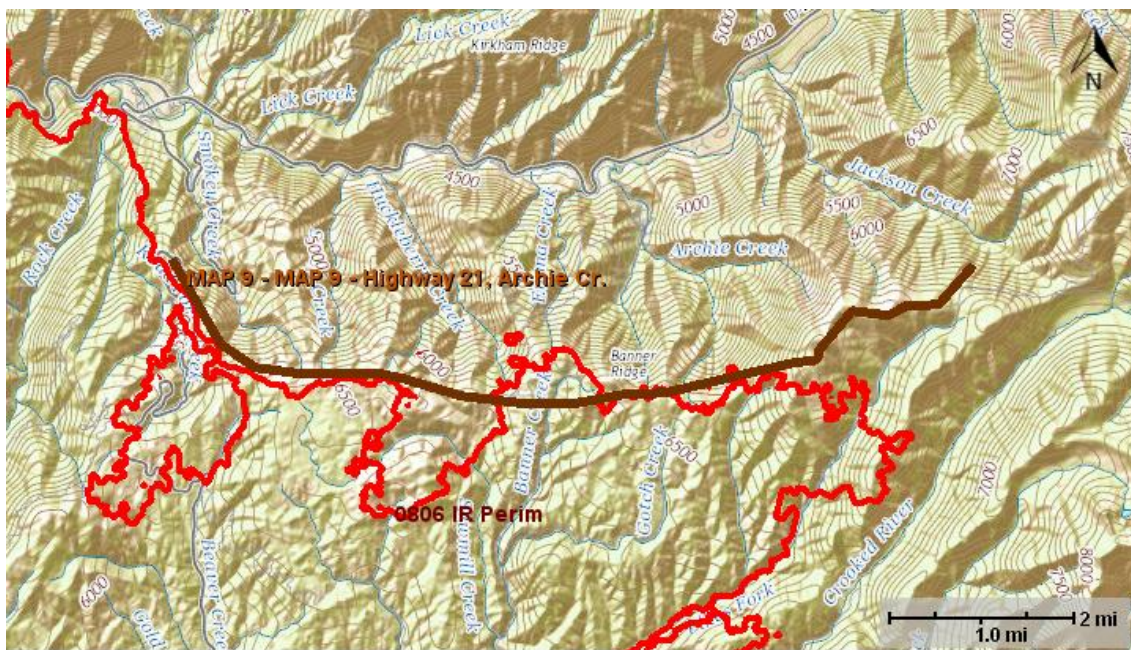
1 - Water Tender

2 - Type 1 or 2IA 20-person handcrews

1 - PIO2/PIOF

Helicopter(s) for bucket support

## Management Action Point 9



— Fire Perimeters   
 — Planning Areas   
 — Mgmt Action Points

NAME	VALUE
Incident Name	PIONEER
Cost	
Shape	MAP 9 - Highway 21, Archie Cr.
Activated	08/06/2016
Deactivated	

### Condition

Spatial - Fire becomes established north of Forest Service road 385.

#### **and**

Temporal - Shrub/Grass component becomes available to support active fire spread.

### Actions

Consider public safety along Highway 21 corridor and within Archie Creek.

Evaluate the need for Level 2/3 evacuations for Archie Creek subdivision.

Evaluate structure protection needs for Highway 21 corridor from Lowman to Forest Service Road 542 (Archie Creek)

Evaluate and consider structure protection for Archie Creek

Consider public safety:

- Highway 21
- South Fork of the Payette River
- Kirkham Campground

### Resources

Consider the following resources but base organization on complexity and current/expected fire behavior:

- 1 - DIVS
- 1 - STPS
- 2 - Type 1 or 2IA 20-person handcrews
- 3 - Type 3/4 Engines
- 2 - Type 6 Engines
- 1 - Water Tender
- 1 - PIO2/PIOF

Helicopter for bucket support



## Management Action Point 20



- Fire Perimeters
- Planning Areas
- Mgmt Action Points

NAME	VALUE
Incident Name	PIONEER
Cost	
Shape	MAP 20 - Little Fall Creek
Activated	08/06/2016
Deactivated	

### Condition

Fire Crosses or is anticipated to cross MAP 20 within 12 hours

### Actions

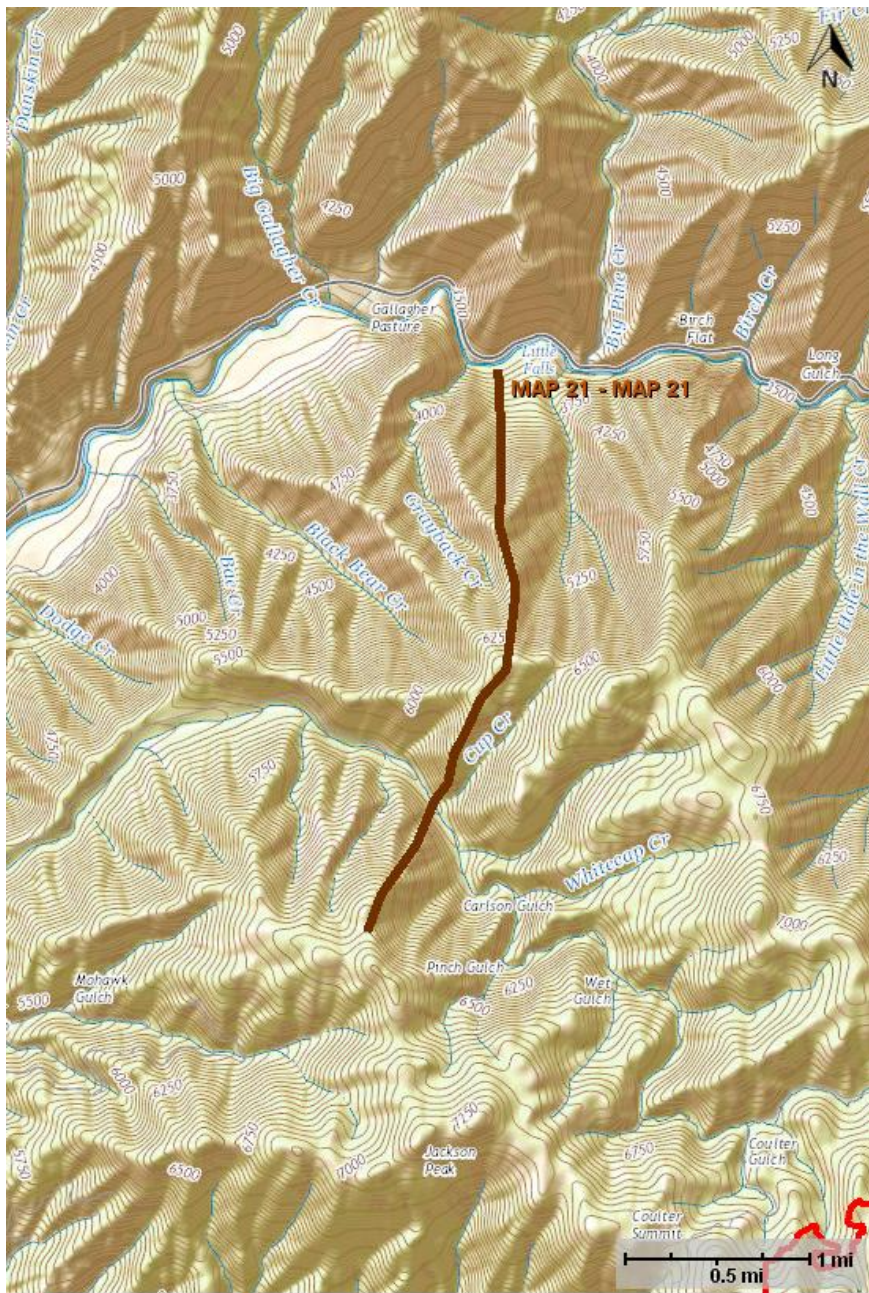
Consider Level 1 Evacuations for structures on Hwy 17 from Forest Service Road 555 to Forest Service Road 382  
 Consider public safety on Highway 17. Recommend Highway closure from Forest Service Road 382, east to Lowman.

Make contact with Idaho Power Company to de-energize powerlines on along Hwy 17 if threatened

## **Resources**



## Management Action Point 21



NAME	VALUE
Incident Name	PIONEER
Cost	
Shape	MAP 21
Activated	08/06/2016
Deactivated	

### Condition

Fire becomes established across or is anticipated to cross MAP 13

### Actions

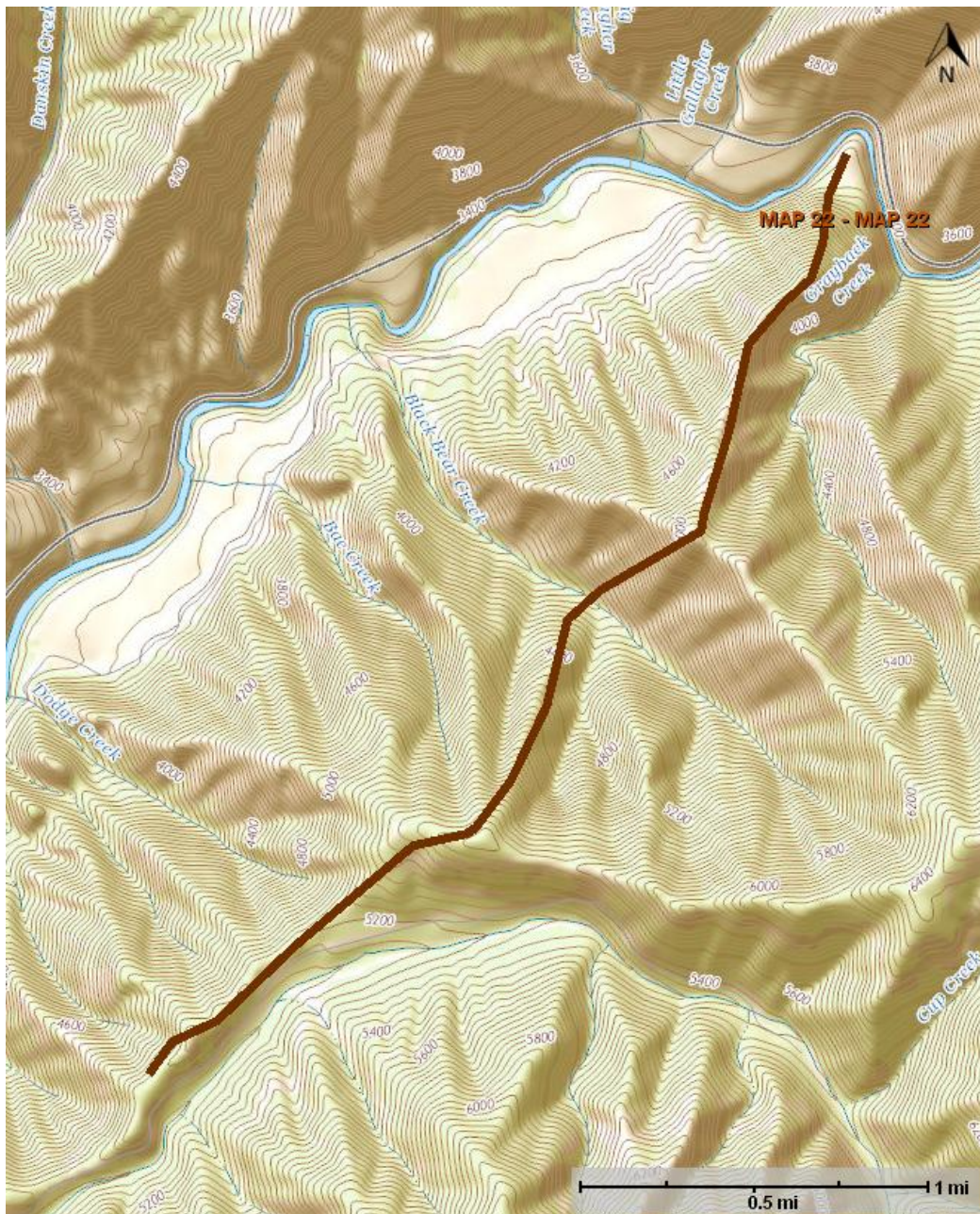
Consider Level 2 Evacuations for structures on Hwy 17 from Forest Service Road 555 to Forest Service Road 382  
 Consider public safety on Highway 17. Recommend Highway closure from Forest Service Road 382, east to Lowman.

Continue contact with Idaho Power Company to de-energize powerlines on along Hwy 17 if threatened

## **Resources**



## Management Action Point 22



— Fire Perimeters    
 — Planning Areas    
 — Mgmt Action Points

NAME	VALUE
Incident Name	PIONEER
Cost	
Shape	MAP 22
Activated	08/06/2016
Deactivated	

### Condition

Fire becomes established across or is anticipated to cross MAP 22

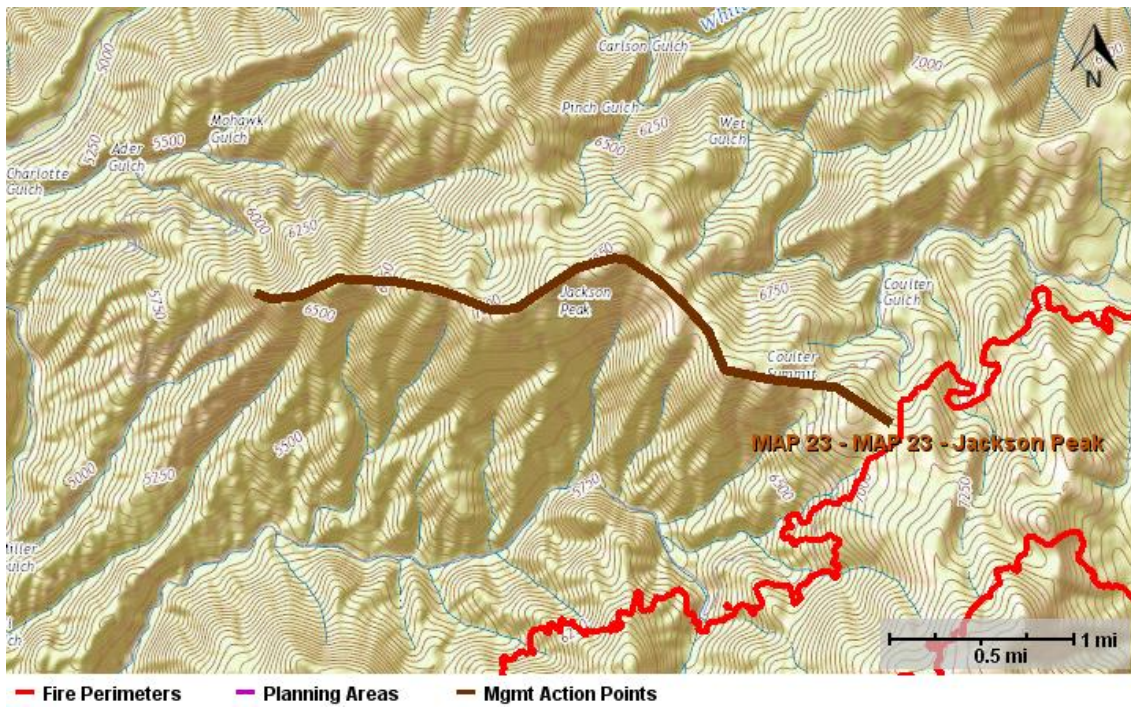
### Actions

- Consider Level 3 Evacuations for structures on Hwy 17 from Forest Service Road 555 to Forest Service Road 382
- Consider public safety on Highway 17. Recommend Highway closure from Forest Service Road 382, east to Lowman.
- Continue contact with Idaho Power Company to de-energize powerlines on along Hwy 17 if threatened

## Resources



## Management Action Point 23



NAME	VALUE
Incident Name	PIONEER
Cost	
Shape	MAP 23 - Jackson Peak
Activated	08/06/2016
Deactivated	

### Condition

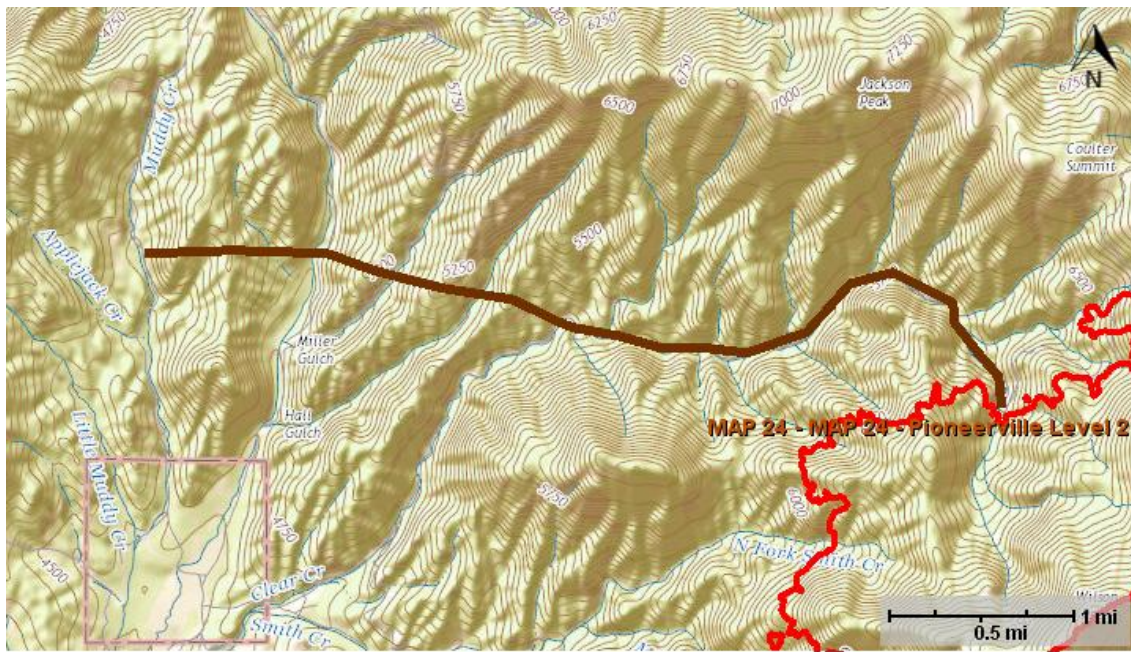
Fire crosses MAP 23

### Actions

- Consider Level 1 evacuations for Pioneerville
- Consider structure protection for homes in Grimes Pass and Pioneerville

### Resources

## Management Action Point 24



--- Fire Perimeters   
 --- Planning Areas   
 --- Mgmt Action Points

NAME	VALUE
Incident Name	PIONEER
Cost	
Shape	MAP 24 - Pioneerville Level 2
Activated	08/06/2016
Deactivated	

### Condition

Fire crosses or is anticipated to cross MAP 24

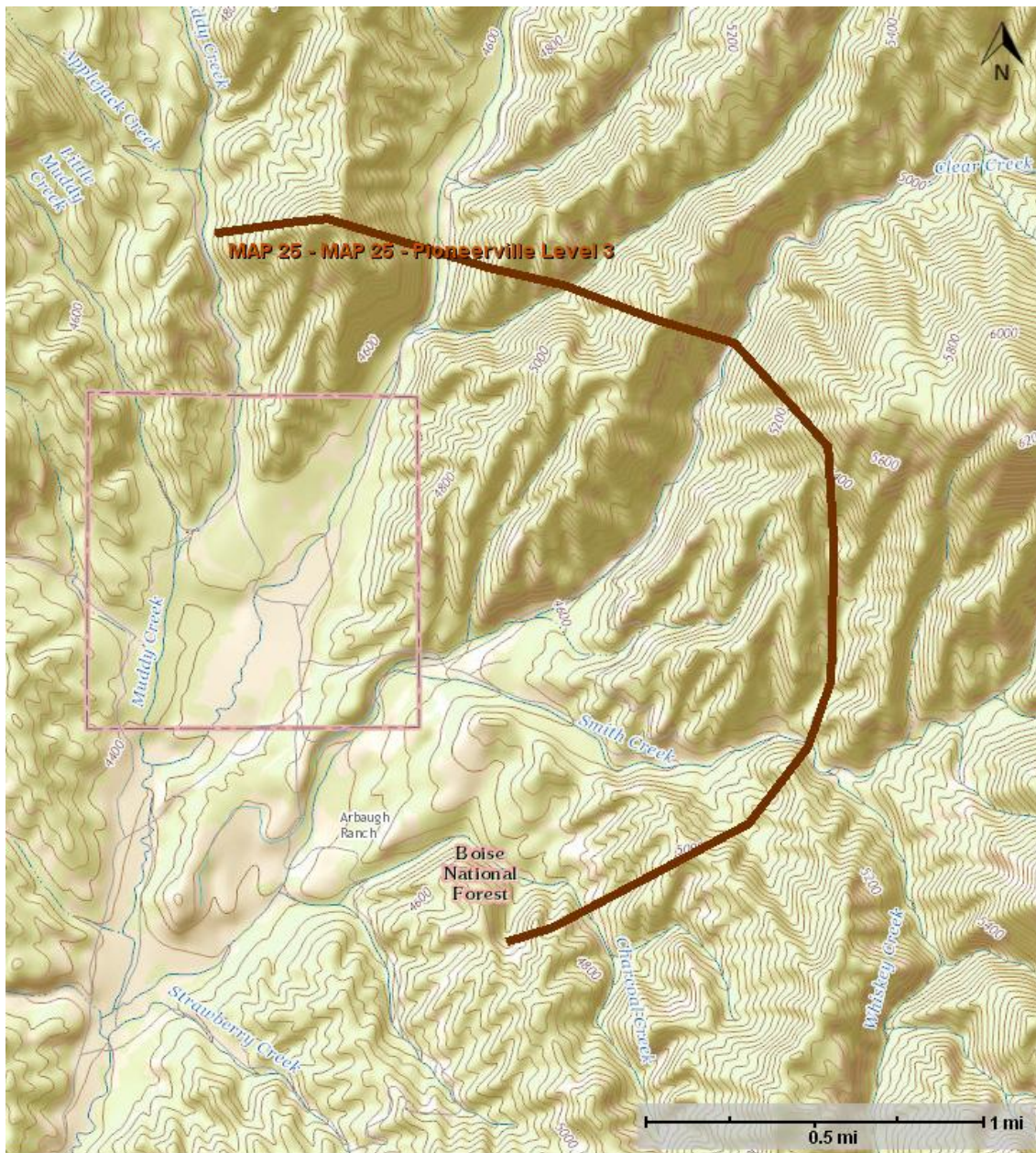
### Actions

- Consider Level 2 evacuations for Pioneerville

### Resources



## Management Action Point 25



— Fire Perimeters    
 — Planning Areas    
 — Mgmt Action Points

NAME	VALUE
Incident Name	PIONEER
Cost	
Shape	MAP 25 - Pioneerville Level 3
Activated	08/06/2016
Deactivated	

### Condition

Fire crosses or is anticipated to cross MAP 25

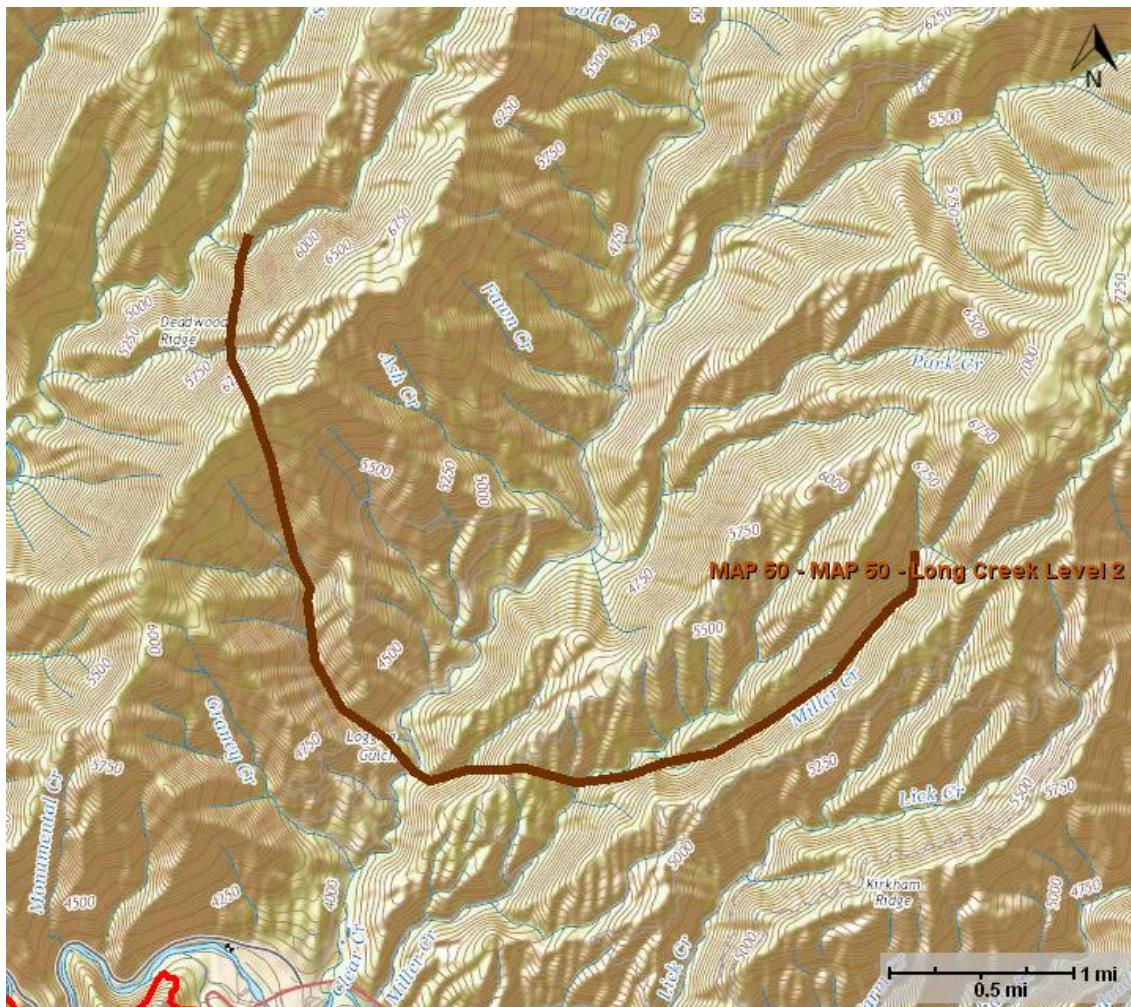
### Actions

- Consider Level 3 evacuations of Pioneerville

### Resources



## Management Action Point 50



— Fire Perimeters   
 — Planning Areas   
 — Mgmt Action Points

NAME	VALUE
Incident Name	PIONEER
Cost	
Shape	MAP 50 - Long Creek Level 2
Activated	08/06/2016
Deactivated	

### Condition

Fire Crosses or is anticipated to cross MAP 50

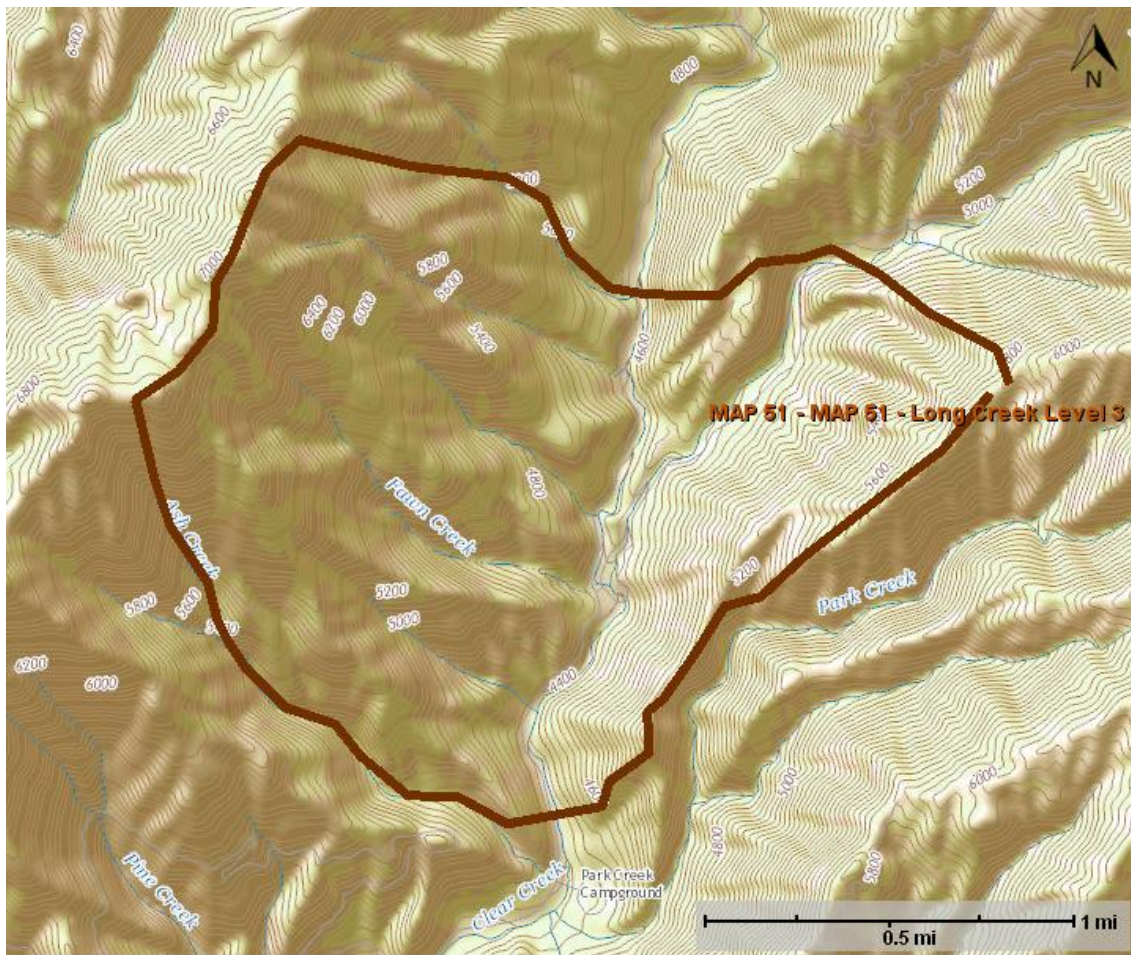
### Actions

- Consider Level 2 evacuations of Long Creek summer homes and Park Creek campground
- Consider public safety in Park Creek campground

### Resources



## Management Action Point 51



— Fire Perimeters   
 — Planning Areas   
 — Mgmt Action Points

NAME	VALUE
Incident Name	PIONEER
Cost	
Shape	MAP 51 - Long Creek Level 3
Activated	08/06/2016
Deactivated	

### Condition

Fire crosses or is anticipated to cross MAP 51

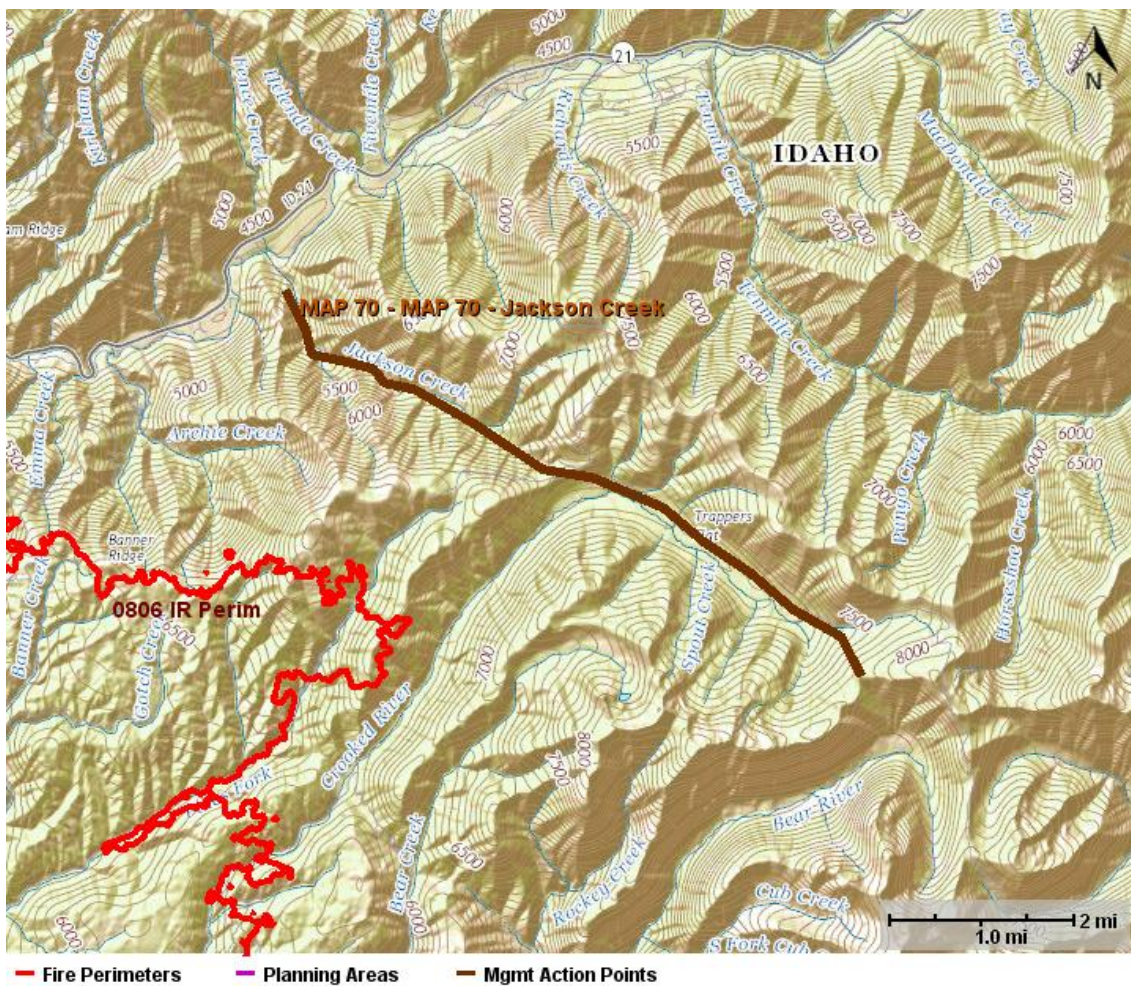
### Actions

- Consider level 3 evacuations of Long Creek summer homes and Park Creek campground

### Resources



## Management Action Point 70



NAME	VALUE
Incident Name	PIONEER
Cost	
Shape	MAP 70 - Jackson Creek
Activated	08/06/2016
Deactivated	

### Condition

Spatial - Fire becomes established to the east of MAP 70

#### **and**

Temporal - Shrub/Grass component becomes available to support active fire spread

### Actions

Assess and consider structure protection for Jackson Peak Lookout

Consider assessing structure protection needs for:

- Upper Lowman
- Ten Ax Subdivision
- Two Raven
- Alsager's Ranch

Consider extending/continuing area/road/trail closures to the east

Assess/model potetial fire spread to the East/Northeast towards Grandjean

### Resources

Consider the following resources but base organization on complexity and current/expected fire behavior:

1 - DIVS

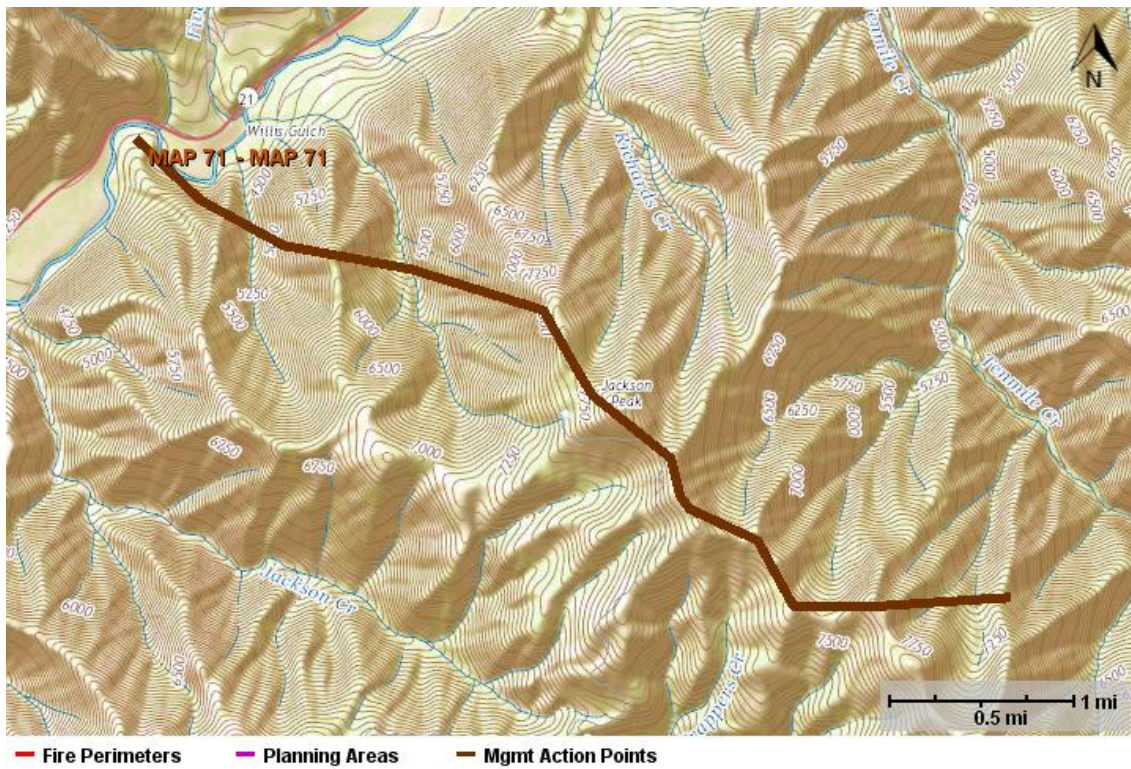
1 - STPS

3 - Type 3/4 Engines

1 - Type 1 or 2IA crew



## Management Action Point 71



NAME	VALUE
Incident Name	PIONEER
Cost	
Shape	MAP 71
Activated	08/06/2016
Deactivated	

### Condition

Fire crosses MAP 71

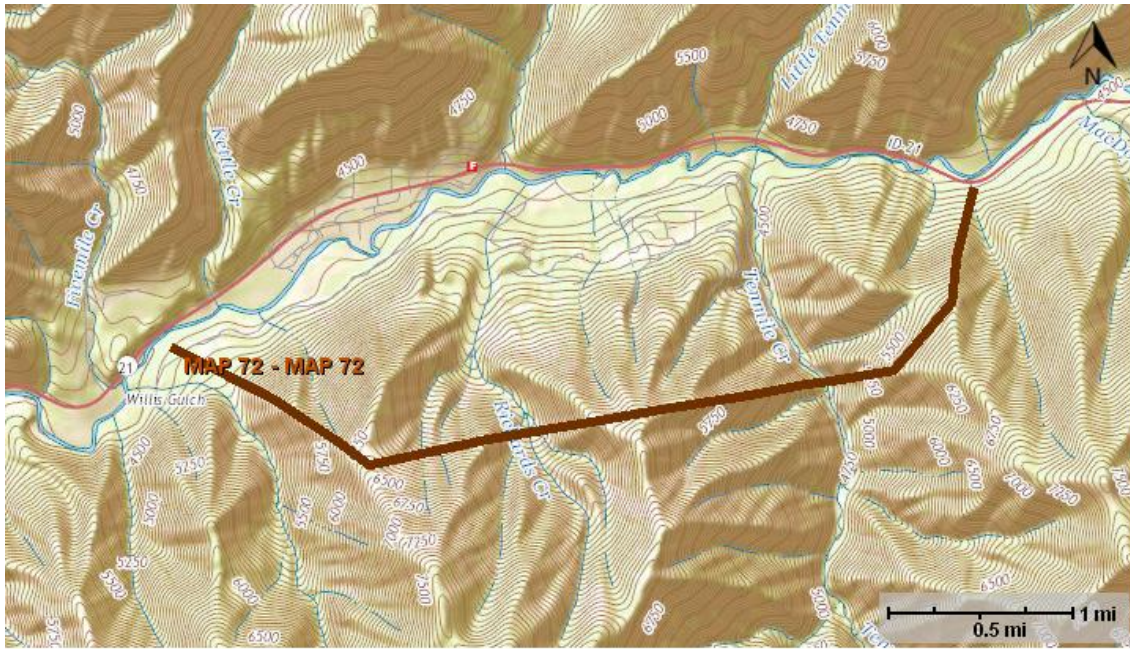
### Actions

- Consider Level 2 evacuations of Upper Lowman
- Consider Level 2 evacuations of Ten Ax subdivision
- Consider Level 2 evacuations of Two Raven
- Consider Level 2 evacuations of Alsager's Ranch

### Resources



## Management Action Point 72



— Fire Perimeters    — Planning Areas    — Mgmt Action Points

NAME	VALUE
Incident Name	PIONEER
Cost	
Shape	MAP 72
Activated	08/06/2016
Deactivated	

### Condition

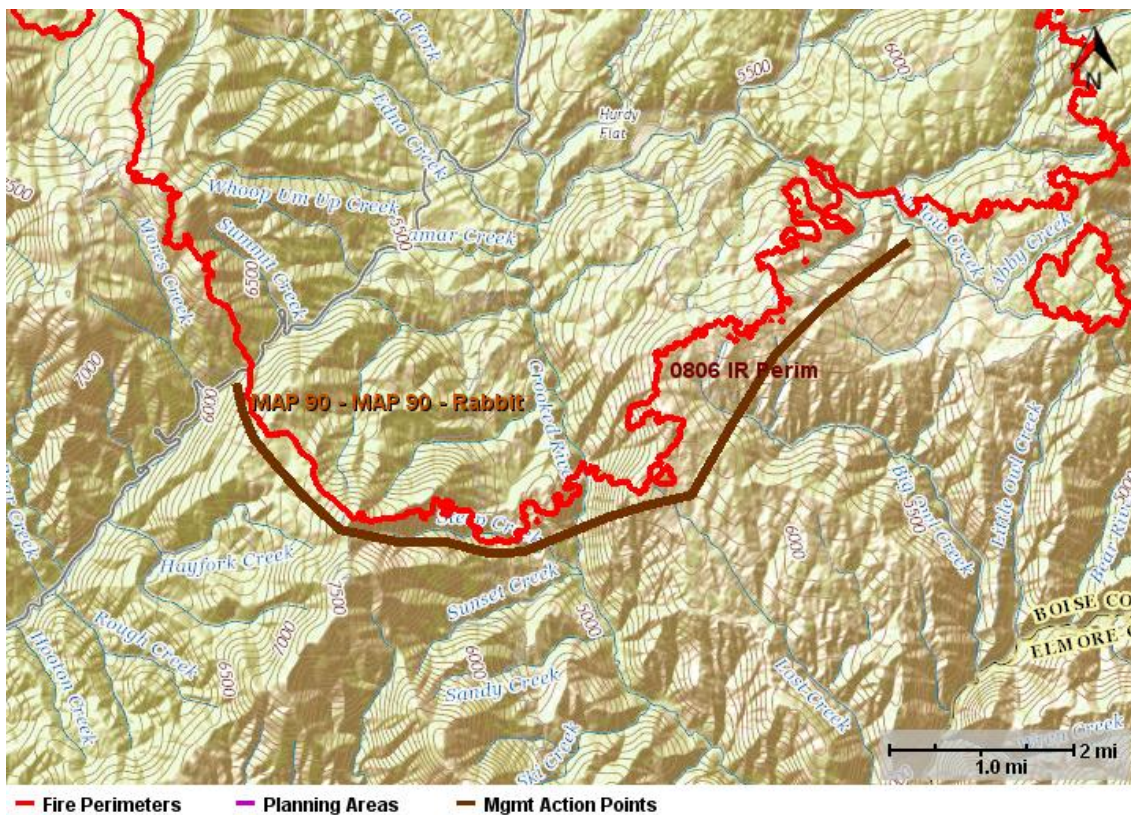
Fire crosses or is anticipated to cross MAP 72

### Actions

- Consider Level 3 evacuations of Upper Lowman
- Consider Level 3 evacuations of Ten Ax subdivision
- Consider Level 3 evacuations of Two Raven
- Consider Level 3 evacuations of Alsager's Ranch

### Resources

## Management Action Point 90



NAME	VALUE
Incident Name	PIONEER
Cost	
Shape	MAP 90 - Rabbit
Activated	08/06/2016
Deactivated	

### Condition

Spatial - Fire becomes established south of current fire perimeter.

**and**

Temporal - Shrub/Grass component becomes available to support active fire spread.

### Actions

Consider providing structure protection for Ten Mile Summer homes

Continue providing structure protection for Sunset Mountain Lookout

Consider public safety on Hwy 21 south of Mores Creek Summit

### Resources

## 1.7. Cost

Estimated Final Cost

---

NAME	VALUE
Estimated Final Cost	\$35,000,000
Method(s) Used	Historic Costs

---

### Comments

Estimated costs are commensurate with values at risk considering potential fire growth.

## 1.8. Rationale

### Rationale

**Incident Name: Pioneer**

**Date: August 6, 2016**

### Risk Assessment:

#### 1. Describe the critical values at risk.

Name of Value	Description	Location/Distance from Fire
Lowman	Incorporated community	Immediately adjacent to the perimeter on the N edge of the fire. Community extends along S. Fork of Payette River for @ 11 miles to the east.
Pioneerville	Incorporated community. Historical significance	4 Miles W of the fire.
Danskin Station Residential Area	Unincorporated rural subdivision along S. Fork of Payette River near Grimes Pass road (FS Road 382)	8 Miles W of the fire.
Hwy. 21 Corridor infrastructure.	Campgrounds and infrastructure along Hwy. 21 between Mores Crk. summit and Lowman.	Within the fire perimeter
Hwy. 17 Corridor infrastructure	Powerlines, Campgrounds, and infrastructure along Hwy. 17 between Lowman and Grimes Pass Rd. (FS Rd. 382)	Within or adjacent to the fire perimeter near Lowman.
Elk Creek Watershed	Municipal Watershed for Idaho City	Fire is in the drainage headwaters, @ 1 mile N of Elk Crk. mainstem
Lowman Municipal Watersheds	Perennial streams that provide water source for Lowman	1-3 Miles N of the fire.
Sunset Mountain Lookout	Sunset Mtn Lookout and Communications site	Immediately adjacent to the perimeter on S side of fire.
Jackson Peak Lookout	Jackson Peak Lookout and Communication Site	3.5 Miles NE of the fire.
Whitehawk Lookout	Whitehawk Lookout and Communication Site	15 Miles N of the fire.
Scott Mountain Lookout	Scott Mountain Lookout and BOR microwave communications site for Deadwood Dam	8 Miles NW of the fire
Deadwood Lookout	Registered Historic Lookout	2.5 Miles N of the fire.
Beaver Crk Guard Station	Historic FS Guard Station	Within the fire perimeter
Kempner Ranch	Historic Homestead and Current grazing permittee infrastructure	Within the fire perimeter
Deadwood Reservoir Admin site and Campground	Bureau of Reclamation and Forest Service Administrative Sites and Campgrounds	14 Miles N of the fire.
Ten Mile Summer Homes	Private Cabin leases	4 Miles S of the fire.
Long Creek Summer Homes	Private Cabin leases	3 Miles N of the fire.
Park Crk Campground	Forest Service Campground in Clear Crk drainage	3 Miles N of the fire.
Banner Mine	Private Inholding and Mining site	Within the fire perimeter
South Fork Payette River Outfitting	White water rafting outfitting businesses along South Fork Payette River.	Immediately adjacent to the fire perimeter.



Idaho Parks and Rec Yurt rental system	Idaho Park and Rec Yurt Rental program	Within the fire perimeter
Pilot Peak Lookout/ Communications Site	Communications Site for Forest and County radio network	Immediately adjacent to the fire perimeter on S side of the fire.
Misc. Mining Claims	Misc. infrastructure to support mining claims throughout the fire area.	Immediate vicinity and within the fire area
Critical resource habitat	<ul style="list-style-type: none"> <li>• Sacajawea's bitterroot (<i>Lewisia sacajaweana</i>) habitat</li> <li>• Critical Bull Trout habitat</li> <li>• Whitebark Pine (<i>Pinus albicaulis</i>)</li> <li>• Canada lynx (<i>Lynx canadensis</i>) habitat</li> </ul>	Immediate vicinity and within the fire area.

**2. What is the chance the critical values will be impacted, and if so what are the consequences?**

Name of Value	Chance that the value will be impacted	Consequences of the impact
Lowman	High	Incorporated community. Potential that evacuations and structure protection will be needed.
Pioneerville	Low	Incorporated community. Potential that evacuations and structure protection will be needed.
Danskin Station Residential Area	Low	Uncorporated community. Potential that evacuations and structure protection will be needed.
Hwy. 21 Corridor infrastructure.	High	Loss or recreation opportunities for public. Potential damage/destruction of FS infrastructure. Closure of Hwy. 21
Hwy. 17 Corridor infrastructure	High	Loss or recreation opportunities for public. Potential damage/destruction of FS infrastructure. Disruption of power services to Lowman and surrounding area. Potential for closure of Hwy. 17
Elk Creek Watershed	High	Degrade water quality for the Idaho City municipal water system.
Lowman Municipal Watershed	High	Degrade water quality for the community of Lowman.
Sunset Mountain Lookout	High	Damage or loss of FS infrastructure and/or FS and County communications equipment.
Jackson Peak Lookout	High	Damage or loss of FS infrastructure and/or FS and County communications equipment.
Whitehawk Lookout	Moderate	Damage or loss of FS infrastructure and/or FS communications equipment.
Scott Mountain Lookout	High	Damage or loss of FS infrastructure and BOR microwave communications to Deadwood Dam.
Deadwood Lookout	Low	Damage or loss of historic structure.
Beaver Crk Guard Station	High	Damage or loss of historic structures.
Kempner Ranch	High	Damage or loss of historic structures and grazing permittee infrastructure.
Deadwood Reservoir Admin site and Campground	Moderate	Damage or loss of admin sites associate with Deadwood Dam. Loss of recreation opportunities and campgrounds.
Ten Mile Summer Homes	Low	Damage or loss to private property on federal leases
Long Creek Summer Homes	Moderate	Damage or loss to private property on federal leases

Park Crk Campground	Moderate	Loss or recreation opportunities and infrastructure.
Banner Mine	High	Destroy infrastructure and disrupt operations for mining activity
South Fork Payette River Outfitting	High	Loss of recreation opportunities and income for permittees.
Idaho Parks and Rec Yurt rental system	High	Loss of recreation opportunities and income for cooperating partners.
Pilot Peak Lookout/ Communications Site	High	Loss of Boise National Forest and Boise County radio repeater systems.
Misc. Mining Claims	High	Destroy infrastructure and operations for area mining activity
Critical resource habitat	High	Damage or loss of critical species habitat.

**3. What are the opportunities to manage the fire to meet LRMP objectives?**

This fire is within FMU 2, Wildland Urban Interface, as identified in the Boise National Forest Fire Management Plan, this FMU emphasizes applying strategies and tactics to keep wildland fires from reaching structures, as prudent to do so, while considering risk management for firefighters and the public, fire behavior, values at risk including natural resources, availability of firefighting resources, and jurisdictional authorities.

**4. Describe the possible low probability/high consequence events?**

- Due to rugged and remote terrain there is a need for use of aviation resources which could result in an aviation incident.
- Area of high recreation use, potential for public involved incidents.
- Extreme fire behavior and spread that would impact a residential areas requiring evacuations and or large scale structure protection measures

**5. Who are the stakeholders that should be consulted prior to making a decision?**

- Boise County Commissioners
- Boise County Sheriff
- Idaho Department of Lands
- Idaho Parks and Rec.

**Risk Decision:**

**1. What alternatives (objectives, strategies and tactics) are being considered?**

Full suppression utilizing direct suppression tactics where feasible and safe to do so. Where unsafe to directly engage, natural barriers and roads will be considered as possible opportunities to slow fire progression.

**2. What is the exposure to responders for the alternatives being considered?**

Exposure to fire fighters is high based on remote access, rugged terrain, high fuel loading and concentrations of snags.

**3. What is the relative (high, medium, low) probability of success associated with the alternatives being considered?**

The probability of success is high utilizing the current suppression tactics of direct attack where feasible and indirect/confine and contain where necessary due to fire behavior, fuel loading, or other safety considerations.

<b>Alternative (objectives, strategies, tactics)</b>	<b>Exposure to Responders</b>	<b>Probability of Success (H,M,L)</b>
Confine and Contain	Mod/High	Low: Short Duration Low: Long Duration
Combination of direct attack where feasible and confine and contain in areas where direct attack is unlikely to be successful	High	High: Short Duration High: Long Duration
Direct	High	Moderate: Short Duration Moderate: Long Duration

**4. Describe the alternative that provides for the best balance between the desired outcome and exposure to responders.**

The combination of direct attack when feasible and confine and contain where not alternative provides the best balance of desired outcomes and exposure. Although the exposure to responders is high due to steep terrain and weather, the probability of success is



also high due to the concentration of critical resources at strategic points and the availability of fire scars in the areas mostly likely to be managed with a confine and contain strategy.

**5. What are the critical thresholds that will trigger reconsideration of the proposed alternative and how will they be monitored?**

- Incident objectives are not being met due to a lack of resource availability or significant progress.
- Forecasted critical fire weather event.
- Costs based on historical local incidents of the same general size class in similar fuels and terrain.
- If the fire should cross the S. Fork of the Payette river and become established north of Hwy. 17.
- If the fire should move west towards Danskin Station and threaten to cross Grimes Pass (FS road 382).
- If the fire should continue to move east and cross the Ten Mile watershed threatening Grandjean.
- If the fire should move south of Sunset lookout and threaten Idaho City.
- If the fire should move north and threaten the Deadwood Reservoir Dam associated admin sites.

**Duration of the current strategy is foreseen as likely to extend beyond ten operational periods before sufficient control is achieved.**