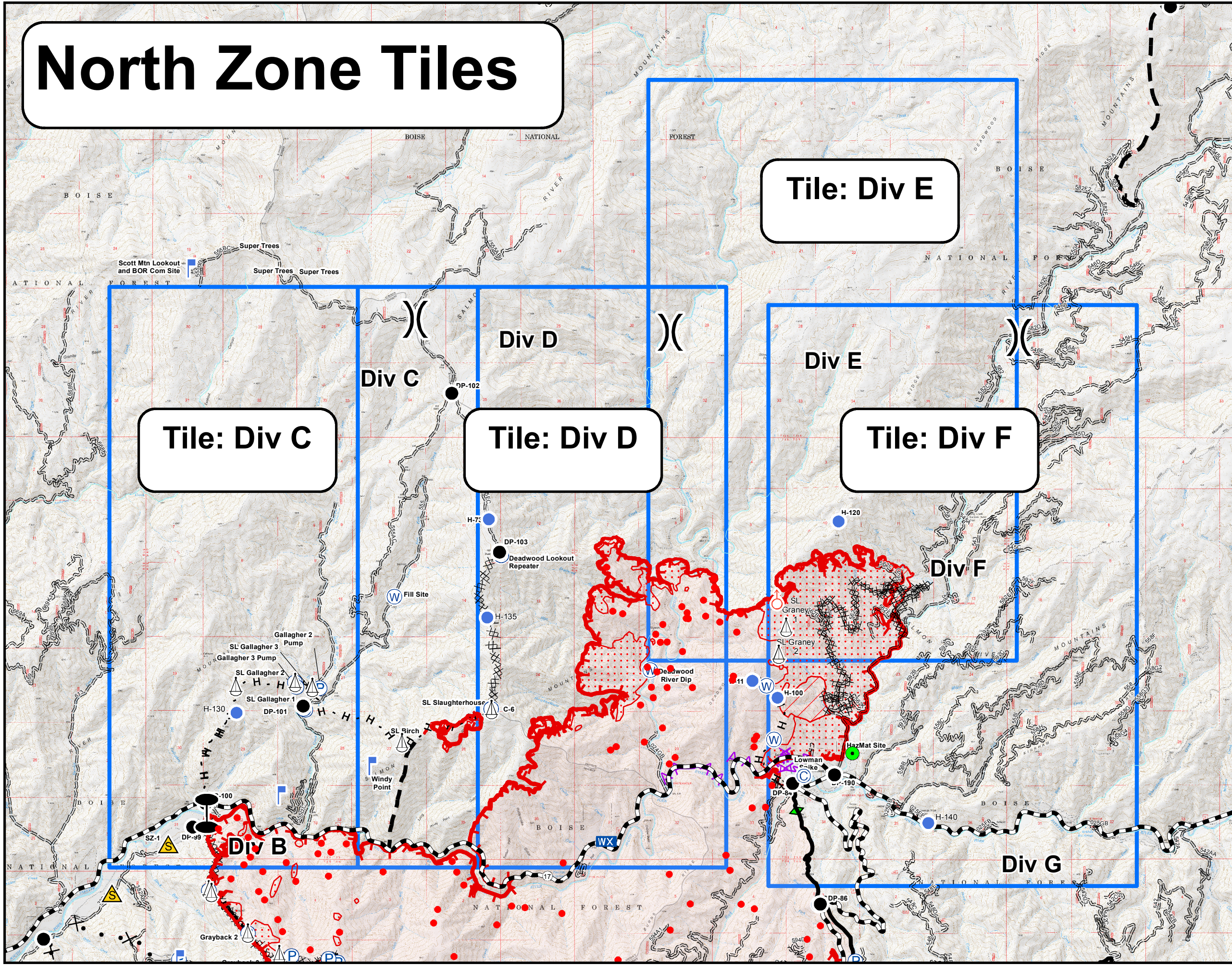


North Zone Tiles

Pioneer Fire North Zone
 ID-BOF-000539
IAP MAP : INDEX
 80,370 Acres
 Operational Period
August 18, 2016



Tile: Div E

Tile: Div C

Tile: Div D

Tile: Div F

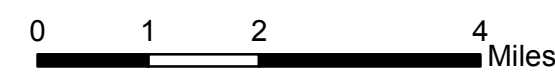
- Division Break
- Branch Break
- Zone Break
- Isolated Heat Source
- Scattered Heat
- Intense Heat
- Heat Perimeter
- Lookout
- WX Mobile Weather Unit
- Pump
- Repeater
- Retardant/Mud Pit
- Camp
- Drop Point
- Fire Origin
- Helibase
- Helispot
- Highlighted Geographic Feature
- Incident Command Post
- Safety Zone
- Sling Site
- Spot Fire
- Telephone
- Water Source
- Aerial Hazard
- Highway
- County Road
- Local Road
- Completed Dozer Line
- Completed Line
- Hand Line
- Highlighted Manmade Feature
- Planned Fire Line
- Plow Line
- Proposed Dozer Line
- Road as Completed Line

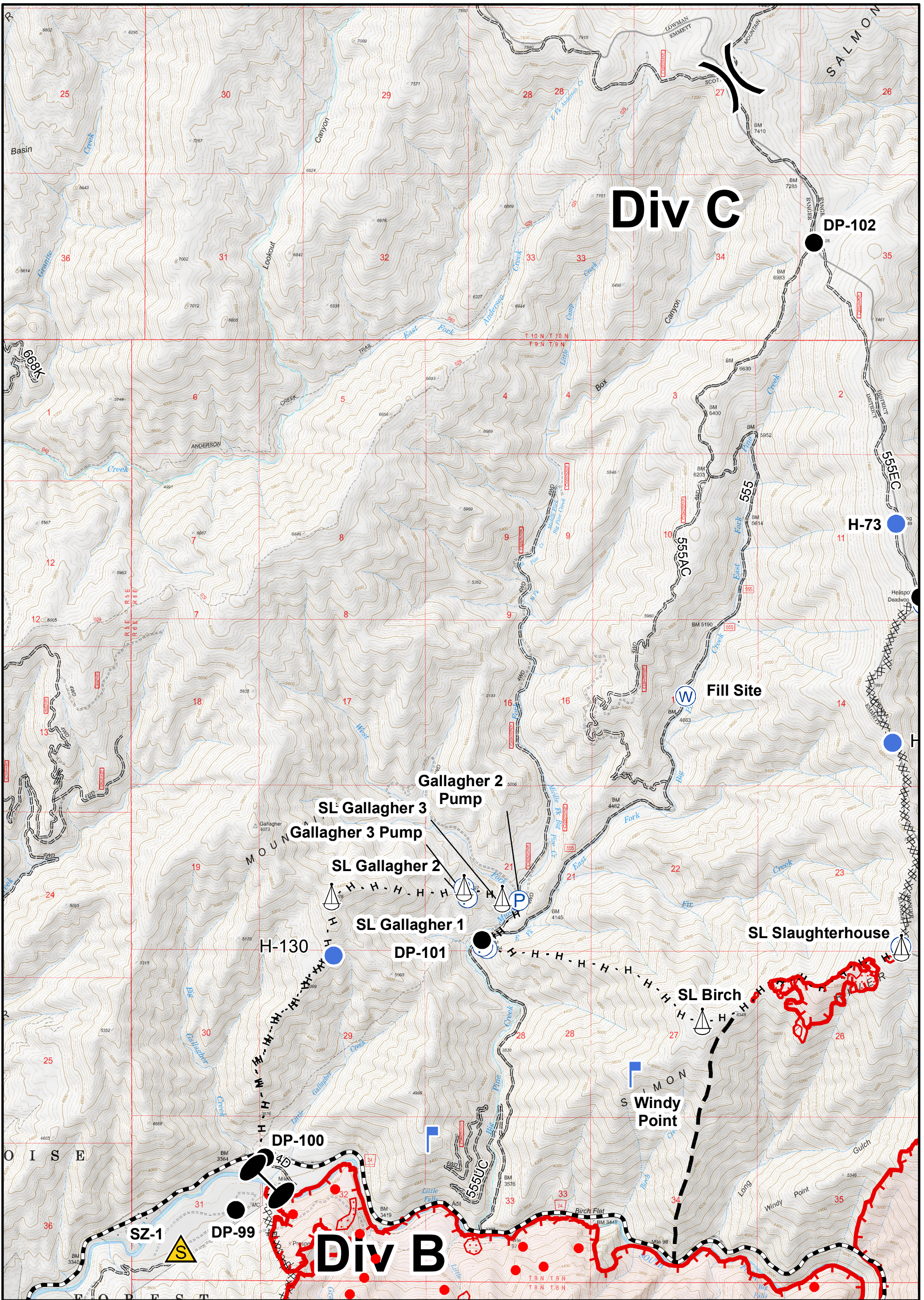


Pioneer North Zone Maps



http://ftp.nifc.gov/incident_specific_data/great_basin/2016_Incidents/Pioneer/Maps_North_Zone/Current_Maps/





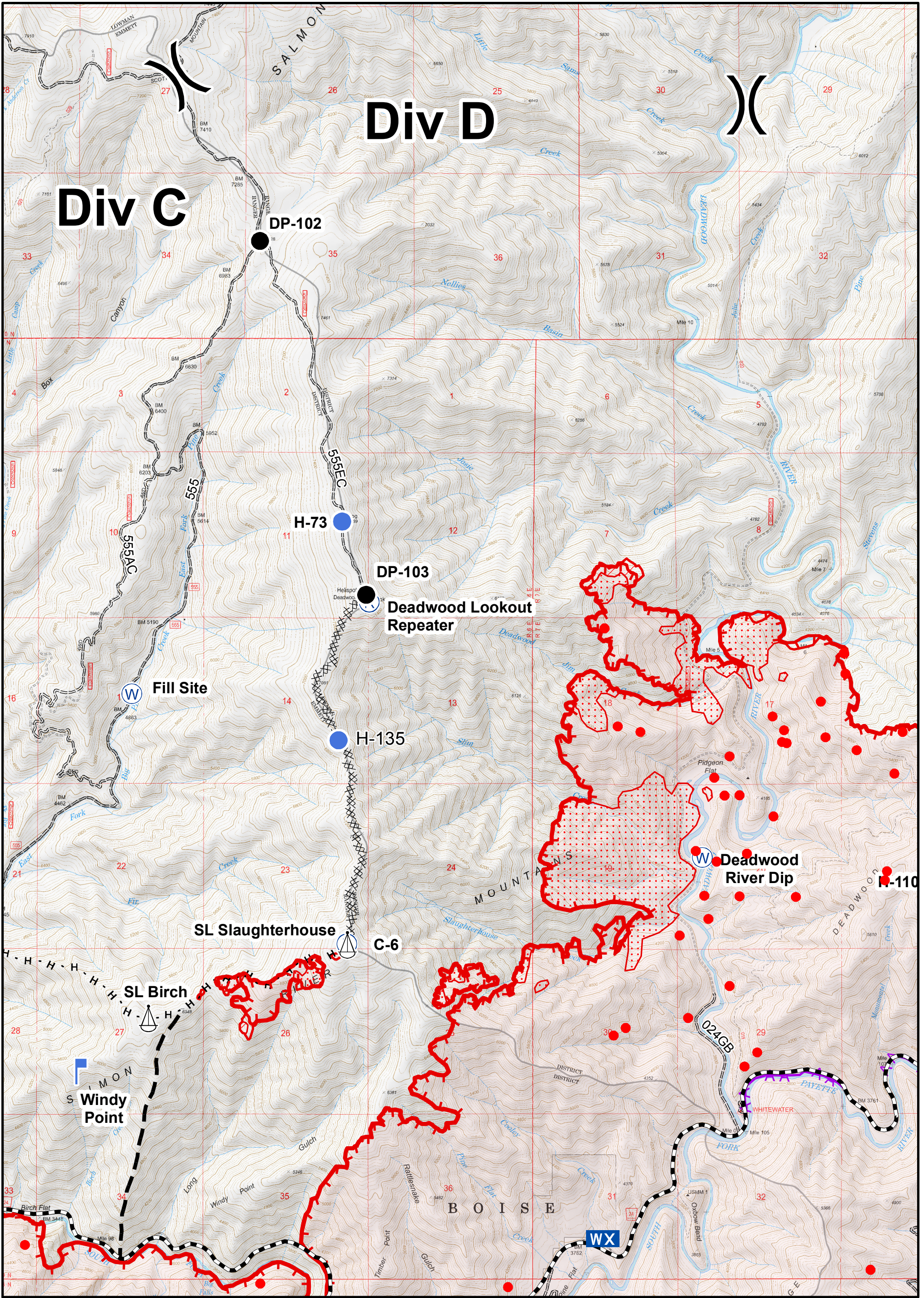
Pioneer Fire North Zone
 ID-BOF-000539
IAP MAP : Div C
 80,370 Acres
 Operational Period
August 18, 2016



IR information current as of August 17, 2016 at 1802
 Author: sedwards
 Produced: 8/17/2016 2320



0 0.45 0.9 1.8 Miles



Pioneer Fire North Zone
 ID-BOF-000539
IAP MAP : Div D
 80,370 Acres
 Operational Period
August 18, 2016

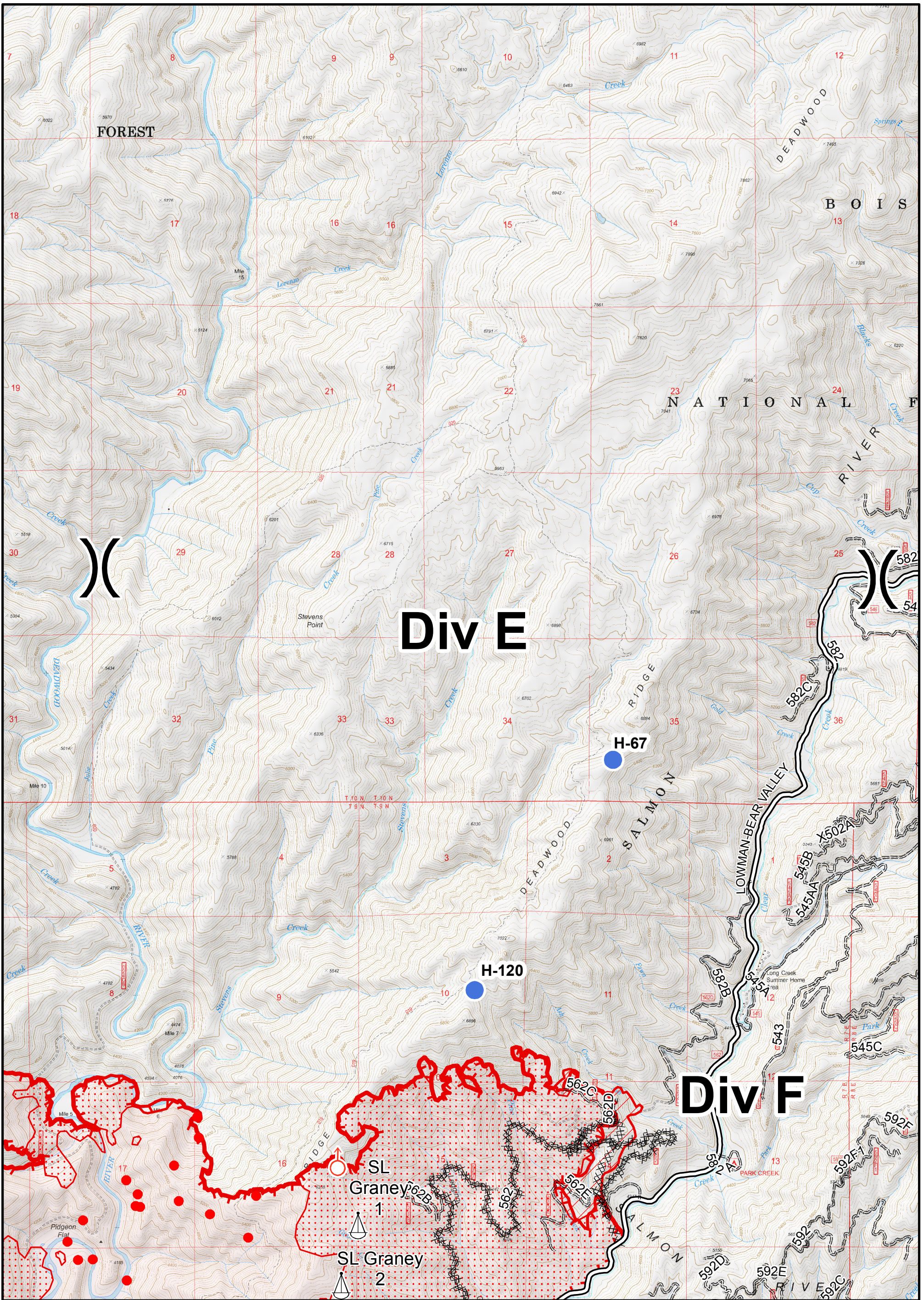


Pioneer North Zone Maps



http://ftp.nrc.gov/incident_specific_data/great_basin2016_incidents/Pioneer/Maps_North_Zone/Current_Maps/
 IR information current as of August 17, 2016 at 1802
 Author: sedwards
 Produced: 8/17/2016 2320

- | | | | | |
|----------------|--------------------------------|---------------------|-----------------------------|------------------------|
| Division Break | Camp | Mobile Weather Unit | Safety Zone | Isolated Heat Source |
| Branch Break | Drop Point | Pump | Aerial Hazard | Scattered Heat |
| Zone Break | Fire Origin | Repeater | Completed Dozer Line | Intense Heat |
| | Helibase | Retardant/Mud Pit | Completed Line | Heat Perimeter |
| | Helispot | Water Source | Highlighted Manmade Feature | Plow Line |
| | Highlighted Geographic Feature | Windy Point | Planned Fire Line | Proposed Dozer Line |
| | Incident Command Post | Windy Point | Highway | Road as Completed Line |
| | | | County Road | |
| | | | Local Road | |
- 0 0.45 0.9 1.8 Miles



Pioneer Fire North Zone
 ID-BOF-000539
IAP MAP : Div E
 80,370 Acres
 Operational Period
August 18, 2016

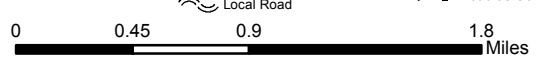


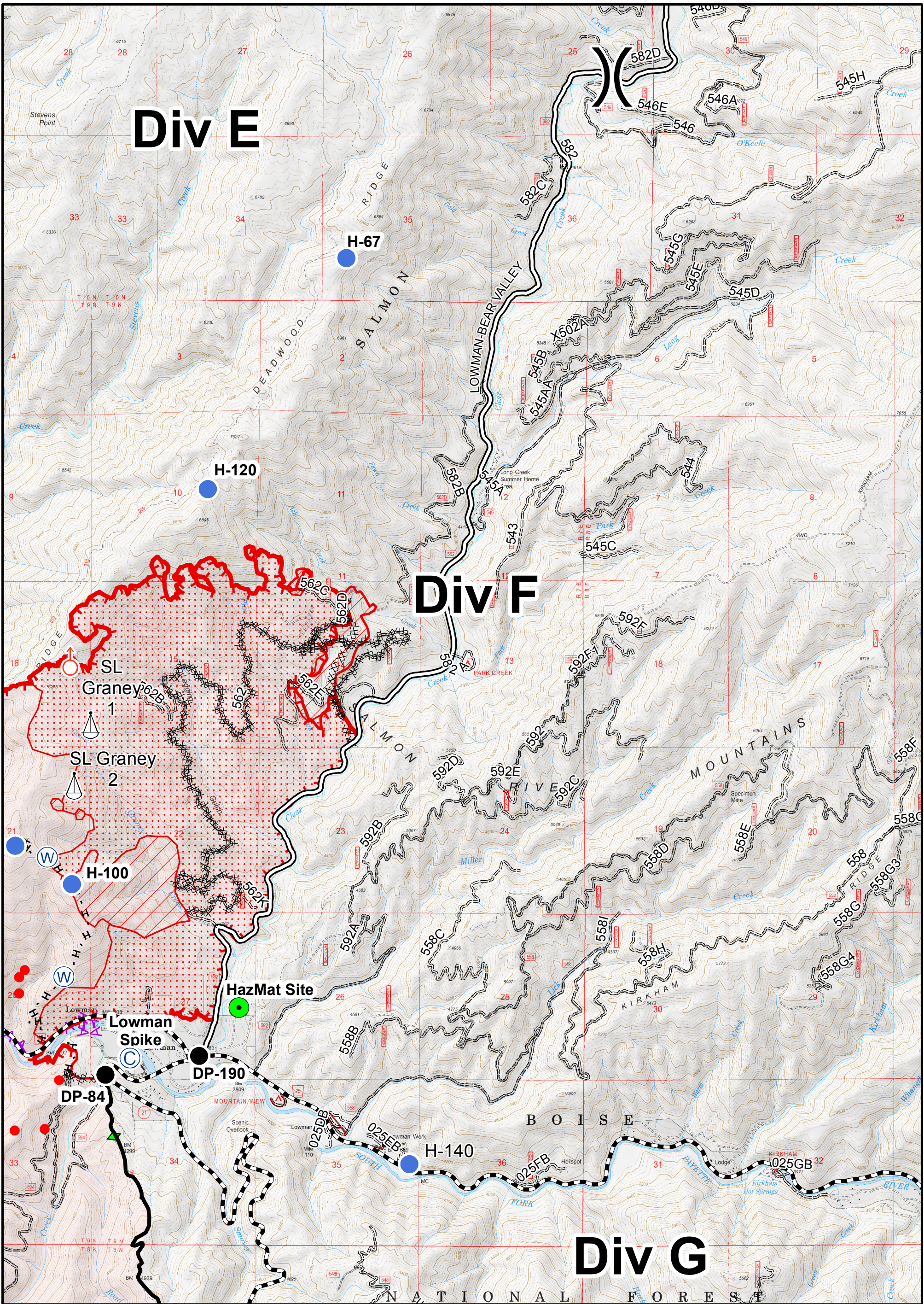
Pioneer North Zone Maps

http://ftp.nifc.gov/incident_specific_data/great_basin/2016_incidents/Pioneer/Maps_North_Zone/Current_Maps/
 IR information current as of August 17, 2016 at 1802
 Author: sedwards
 Produced: 8/17/2016 2320



- | | | | |
|---|---|--|--|
| <ul style="list-style-type: none"> Division Break Branch Break Zone Break | <ul style="list-style-type: none"> Camp Drop Point Fire Origin Helibase Helispot Highlighted Geographic Feature Incident Command Post | <ul style="list-style-type: none"> Lookout Mobile Weather Unit Pump Repeater Retardant/Mud Pit Safety Zone Sling Site Spot Fire Telephone Water Source | <ul style="list-style-type: none"> Aerial Hazard Completed Dozer Line Completed Line Hand Line Highlighted Manmade Feature Planned Fire Line Highway County Road Local Road Isolated Heat Source Scattered Heat Intense Heat Heat Perimeter Plow Line Proposed Dozer Line Road as Completed Line |
|---|---|--|--|





Pioneer Fire North Zone
 ID-BOF-000539
IAP MAP : Div F
 80,370 Acres
 Operational Period
August 18, 2016



Pioneer North Zone Maps

http://ftp.nrc.gov/incident_specific_data/great_basin/2016_incidents/Pioneer/Maps_North_Zone/Current_Maps/
 IR information current as of August 17, 2016 at 1802
 Author: sedwards
 Produced: 8/17/2016 2321



<ul style="list-style-type: none"> Division Break Branch Break Zone Break 	<ul style="list-style-type: none"> Camp Drop Point Fire Origin Helibase Helispot Highlighted Geographic Feature Incident Command Post 	<ul style="list-style-type: none"> Lookout Mobile Weather Unit Pump Repeater Retardant/Mud Pit 	<ul style="list-style-type: none"> Safety Zone Sling Site Spot Fire Telephone Water Source 	<ul style="list-style-type: none"> Aerial Hazard Completed Dozer Line Completed Line Hand Line Highlighted Manmade Feature Planned Fire Line Highway County Road Local Road 	<ul style="list-style-type: none"> Isolated Heat Source Scattered Heat Intense Heat Heat Perimeter Plow Line Proposed Dozer Line Road as Completed Line
---	---	--	--	---	---

0 0.45 0.9 1.8
Miles