

Pioneer Fire  
North Zone  
IDBOF-000539



# Communications Map

August 21, 2016

88,755 acres on August 21, 0116 hrs

- 
- Zone Break
  - Drop Point
  - Helispot
  - Camp
  - Incident Command Post
  - Mobile Weather Unit
  - Division Break
  - 20160821\_0116\_Pioneer\_HeatPerimeter
  - 20160821\_0116\_Pioneer\_IntenseHeat
  - 20160821\_0116\_Pioneer\_ScatteredHeat
  - Uncontrolled Fire Edge
  - Completed Line
  - Completed Dose Line
  - Hand Line
  - Planned Fire Line
  - Proposed Dose Line
  - Aerial Hazard
  - Highway
  - All Vehicle Roads
  - High Clearance Roads
  - Motorized Trail
  - Non-Motorized Trail
  - CAMPGROUND
  - HOTEL, LODGE, RESORT (WITH BEACH OR SHELTER)
  - RECREATION RESIDENCE
  - TRAILHEAD



HELISPOTS	Latitude	Longitude
H-100	44° 5.855' N	115° 37.727' W
H-110	44° 6.055' N	115° 38.141' W
H-120	44° 7.922' N	115° 36.737' W
H-130	44° 5.681' N	115° 46.558' W
H-135	44° 6.798' N	115° 42.467' W
H-140	44° 1.360' N	115° 35.267' W
H-20	43° 57.002' N	115° 45.244' W
H-30	43° 56.331' N	115° 46.321' W
H-35	43° 56.985' N	115° 46.124' W
H-4	43° 59.400' N	115° 41.884' W
H-40	43° 57.138' N	115° 46.061' W
H-49	43° 58.996' N	115° 46.123' W
H-5	43° 58.945' N	115° 45.549' W
H-6	43° 57.490' N	115° 45.380' W
H-60	44° 0.430' N	115° 45.770' W
H-65	44° 2.420' N	115° 23.170' W
H-66	44° 3.755' N	115° 24.795' W
H-67	44° 9.131' N	115° 35.725' W
H-7	43° 58.760' N	115° 44.029' W
H-70	44° 0.125' N	115° 42.017' W
H-72	44° 1.360' N	115° 41.441' W
H-73	44° 7.947' N	115° 42.441' W
H-75	44° 1.930' N	115° 37.623' W
H-79	44° 2.334' N	115° 34.377' W
H-9	43° 57.953' N	115° 45.158' W

DIPS/WATER SOURCES	Latitude	Longitude
Beaver #1 Dip	43° 59.282' N	115° 36.445' W
Deadwood River Dip	44° 6.181' N	115° 38.805' W
Fill Site	44° 7.042' N	115° 43.982' W
Grimes Dip	43° 58.350' N	115° 50.630' W
Jennie Lakes Dip	44° 1.060' N	115° 24.339' W
North Dip	44° 0.500' N	115° 42.802' W

SLING SITES	Latitude	Longitude
Grayback 1	44° 3.605' N	115° 47.015' W
Grayback 2	44° 3.103' N	115° 46.378' W
Grayback 3	44° 2.850' N	115° 45.864' W
SL Birch	44° 5.337' N	115° 43.863' W
SL Gallagher 1	44° 5.989' N	115° 46.575' W
SL Gallagher 2	44° 6.035' N	115° 45.605' W
SL Gallagher 3	44° 5.978' N	115° 45.326' W
SL Graney 1	44° 6.686' N	115° 37.593' W
SL Graney 2	44° 6.369' N	115° 37.711' W
SL Slaughterhouse	44° 5.720' N	115° 42.405' W

DROP POINTS	Latitude	Longitude
DP-10	43° 56.381' N	115° 46.291' W
DP-100	44° 4.618' N	115° 47.061' W
DP-101	44° 5.760' N	115° 45.472' W
DP-102	44° 9.422' N	115° 43.043' W
DP-103	44° 7.562' N	115° 42.265' W
DP-104	44° 3.028' N	115° 49.706' W
DP-105	44° 2.885' N	115° 53.138' W
DP-11	44° 6.998' N	115° 24.413' W
DP-110	44° 7.155' N	115° 52.617' W
DP-111	44° 8.765' N	115° 49.583' W
DP-120	44° 15.735' N	115° 39.599' W
DP-121	44° 14.665' N	115° 41.320' W
DP-122	44° 15.676' N	115° 41.405' W
DP-171	44° 16.450' N	115° 33.463' W
DP-172	44° 16.166' N	115° 32.361' W
DP-173	44° 13.944' N	115° 31.320' W
DP-174	44° 14.053' N	115° 29.816' W
DP-175	44° 12.313' N	115° 30.846' W
DP-190	44° 4.554' N	115° 33.607' W
DP-191	44° 7.745' N	115° 34.835' W
DP-20	43° 55.934' N	115° 48.362' W
DP-30	44° 3.119' N	115° 25.237' W
DP-50	44° 0.128' N	115° 44.882' W
DP-51	44° 1.246' N	115° 50.475' W
DP-52	43° 49.551' N	115° 50.406' W
DP-53	43° 57.865' N	115° 33.328' W
DP-55	43° 58.208' N	115° 50.832' W
DP-70	44° 0.125' N	115° 41.988' W
DP-76	43° 58.849' N	115° 50.491' W
DP-79	44° 2.319' N	115° 34.401' W
DP-80	43° 59.409' N	115° 41.884' W
DP-84	44° 4.855' N	115° 37.485' W
DP-85	44° 1.578' N	115° 37.407' W
DP-86	44° 3.441' N	115° 37.033' W
DP-87	44° 2.394' N	115° 35.950' W
DP-88	44° 2.148' N	115° 32.401' W
DP-89	43° 59.550' N	115° 36.350' W
DP-90	43° 57.527' N	115° 37.857' W
DP-91	44° 2.028' N	115° 30.112' W
DP-92	43° 56.678' N	115° 33.268' W
DP-93	43° 56.400' N	115° 23.639' W
DP-94	44° 2.455' N	115° 31.494' W
DP-95	43° 55.944' N	115° 40.057' W
DP-96	44° 3.023' N	115° 26.544' W
DP-97	43° 55.173' N	115° 34.098' W
DP-97	44° 4.113' N	115° 56.794' W
DP-98	43° 54.928' N	115° 34.778' W
DP-99	44° 4.341' N	115° 47.273' W

ICP/CAMPS	Latitude	Longitude
Garden Valley ICP	44° 5.300' N	115° 57.784' W
Idaho City ICP	43° 49.554' N	115° 50.415' W
Coulter Spike	44° 0.111' N	115° 44.874' W
DP-70 Spike	44° 0.106' N	115° 42.005' W
Lowman Spike	44° 4.944' N	115° 37.305' W

HELISBASES	Latitude	Longitude
Cascade Helibase	44° 29.540' N	116° 0.980' W
Idaho City Helibase	43° 49.429' N	115° 50.706' W
North Zone Helibase	44° 5.056' N	115° 57.587' W

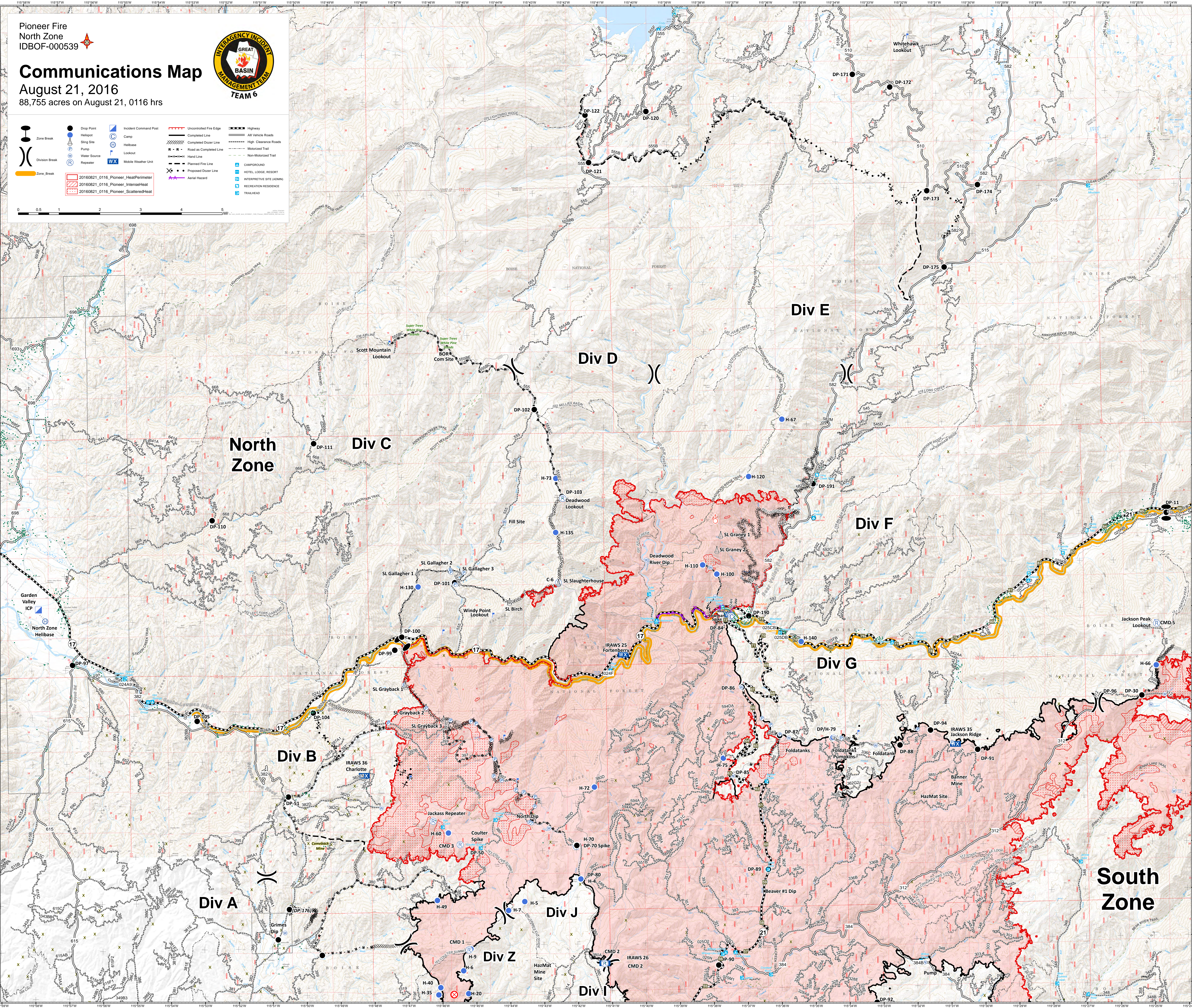
MOBILE RETARDANT BASE	Latitude	Longitude
Centerville Mobile Retardant Base	43° 53.317' N	115° 54.575' W

LOOKOUTS	Latitude	Longitude
Jackson Peak Lookout	44° 4.673' N	115° 24.831' W
Scott Mountain Lookout	44° 10.882' N	115° 47.326' W
Silver Creek Lookout	44° 23.087' N	115° 47.360' W
Whitehawk Lookout	44° 17.246' N	115° 31.843' W
Windy Point	44° 5.055' N	115° 44.376' W

REPEATERS	Latitude	Longitude
C-1	43° 57.934' N	115° 45.214' W
C-2	43° 57.599' N	115° 41.218' W
C-3	44° 0.177' N	115° 45.428' W
C-4	43° 53.938' N	115° 38.804' W
C-5	44° 4.643' N	115° 24.759' W
C-6	44° 5.725' N	115° 42.407' W

MOBILE WEATHER STATIONS	Latitude	Longitude
IRAWS 25 Fortenberry	44° 4.173' N	115° 40.537' W
IRAWS 26 Pilot Peak	43° 57.605' N	115° 41.220' W
IRAWS 35 Jackson Ridge	44° 2.151' N	115° 30.773' W
IRAWS 36 Charlotte	44° 1.673' N	115° 48.235' W
IRAWS 43 Lowman Spike	44° 4.986' N	115° 37.380' W

OTHER	Latitude	Longitude
BOR Com Site	44° 10.471' N	115° 45.099' W
Super Trees	44° 11.104' N	115° 46.554' W
Super Trees	44° 10.814' N	115° 45.650' W
Super Trees	44° 10.803' N	115° 45.583' W
Banner Mine	44° 1.163' N	115° 31.927' W
HazMat Site	44° 5.208' N	115° 36.511' W
King Mine (HazMat Site)	43° 57.887' N	115° 42.557' W



## South Zone