



Pioneer Fire
North Zone
IDBOF-000539

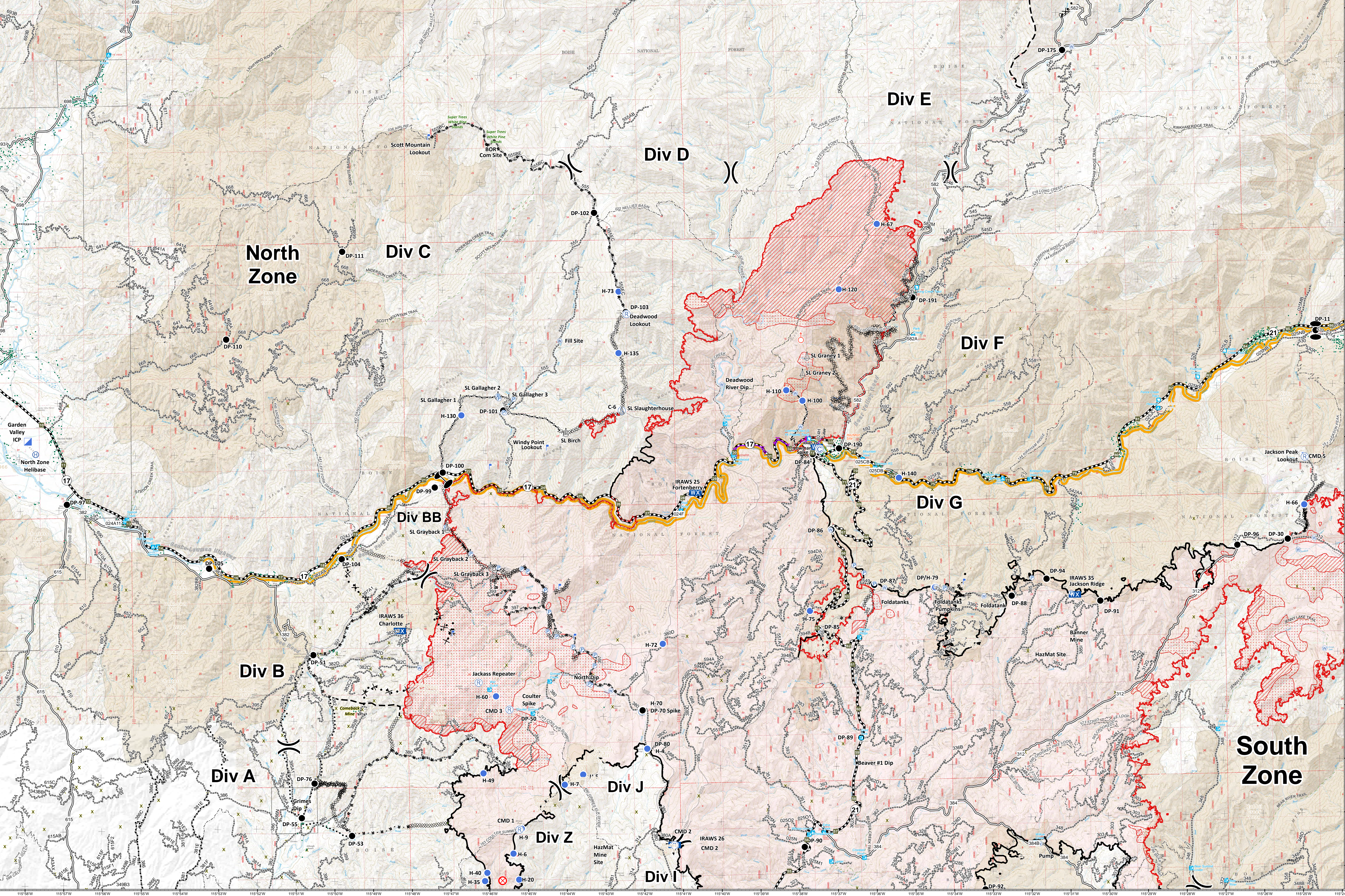


Communications Map

August 22, 2016
96,469 acres on August 21, 2014 hrs

Legend:

- Drop Point
- Helicopter
- Incident Command Post
- Completed Line
- Uncontrolled Fire Edge
- Highway
- Zone Break
- Division Break
- Zone Break
- 20160821_2014_Pioneer_HeatPerimeter
- 20160821_2014_Pioneer_IntenseHeat
- 20160821_2014_Pioneer_ScatteredHeat



HELICOPTS	Drop Point	Helicopter	Incident Command Post	Completed Line	Uncontrolled Fire Edge	Highway
H-100	44° 5.855' N	115° 37.727' W				
H-110	44° 6.055' N	115° 38.141' W				
H-120	44° 7.922' N	115° 36.737' W				
H-130	44° 5.681' N	115° 46.558' W				
H-135	44° 6.798' N	115° 42.467' W				
H-140	44° 57.002' N	115° 35.267' W				
H-20	43° 57.002' N	115° 45.244' W				
H-30	43° 56.333' N	115° 46.321' W				
H-35	43° 56.985' N	115° 46.124' W				
H-4	43° 59.409' N	115° 41.884' W				
H-40	43° 57.138' N	115° 46.061' W				
H-49	43° 58.996' N	115° 46.123' W				
H-5	43° 58.945' N	115° 45.549' W				
H-6	43° 57.499' N	115° 45.389' W				
H-60	44° 0.430' N	115° 45.770' W				
H-65	44° 2.420' N	115° 45.770' W				
H-66	44° 3.755' N	115° 45.770' W				
H-67	44° 9.131' N	115° 35.725' W				
H-7	43° 58.760' N	115° 44.029' W				
H-70	44° 0.125' N	115° 42.017' W				
H-72	44° 1.360' N	115° 41.444' W				
H-73	44° 7.947' N	115° 42.441' W				
H-75	44° 1.930' N	115° 37.623' W				
H-79	44° 2.334' N	115° 34.377' W				
H-9	43° 57.953' N	115° 45.158' W				

DIPS/WATER SOURCES	Drop Point	Helicopter	Incident Command Post	Completed Line	Uncontrolled Fire Edge	Highway
Beaver #1 Dip	43° 59.282' N	115° 36.445' W				
Deadwood River Dip	44° 6.181' N	115° 38.805' W				
Fill Site	44° 7.042' N	115° 43.982' W				
Grimes Dip	43° 58.350' N	115° 50.630' W				
Jennie Lakes Dip	44° 1.060' N	115° 24.339' W				
North Dip	44° 0.500' N	115° 42.802' W				

SLING SITES	Drop Point	Helicopter	Incident Command Post	Completed Line	Uncontrolled Fire Edge	Highway
Grayback 1	44° 3.605' N	115° 47.015' W				
Grayback 2	44° 2.850' N	115° 45.864' W				
Grayback 3	44° 2.850' N	115° 45.864' W				
SL Birch	44° 5.333' N	115° 43.863' W				
SL Gallagher 1	44° 5.989' N	115° 46.575' W				
SL Gallagher 2	44° 6.035' N	115° 45.605' W				
SL Gallagher 3	44° 5.978' N	115° 45.326' W				
SL Graney 1	44° 6.686' N	115° 37.593' W				
SL Graney 2	44° 6.369' N	115° 37.711' W				
SL Slaughterhouse	44° 5.720' N	115° 42.405' W				

DROP POINTS	Drop Point	Helicopter	Incident Command Post	Completed Line	Uncontrolled Fire Edge	Highway
DP-10	43° 56.381' N	115° 46.291' W				
DP-100	44° 4.618' N	115° 47.061' W				
DP-101	44° 5.760' N	115° 45.472' W				
DP-102	44° 9.422' N	115° 43.045' W				
DP-103	44° 7.562' N	115° 42.265' W				
DP-104	44° 3.028' N	115° 49.706' W				
DP-105	44° 2.885' N	115° 53.138' W				
DP-11	44° 6.998' N	115° 24.413' W				
DP-110	44° 7.155' N	115° 52.617' W				
DP-111	44° 8.765' N	115° 49.583' W				
DP-120	44° 15.735' N	115° 39.599' W				
DP-121	44° 14.665' N	115° 41.329' W				
DP-122	44° 15.670' N	115° 41.405' W				
DP-171	44° 16.450' N	115° 33.463' W				
DP-172	44° 16.166' N	115° 32.361' W				
DP-173	44° 13.944' N	115° 31.320' W				
DP-174	44° 14.055' N	115° 29.816' W				
DP-175	44° 12.313' N	115° 30.846' W				
DP-190	44° 4.954' N	115° 38.805' W				
DP-191	44° 7.745' N	115° 34.835' W				
DP-20	43° 55.934' N	115° 48.362' W				
DP-30	44° 3.119' N	115° 25.237' W				
DP-50	44° 0.128' N	115° 44.882' W				
DP-51	44° 1.246' N	115° 50.475' W				
DP-52	43° 49.551' N	115° 50.406' W				
DP-53	43° 57.865' N	115° 45.340' W				
DP-55	43° 58.208' N	115° 50.832' W				
DP-70	44° 0.125' N	115° 41.988' W				
DP-76	43° 58.849' N	115° 50.491' W				
DP-79	44° 2.319' N	115° 34.401' W				
DP-80	43° 59.409' N	115° 41.884' W				
DP-84	44° 4.855' N	115° 37.485' W				
DP-85	44° 1.578' N	115° 31.407' W				
DP-86	44° 3.441' N	115° 37.033' W				
DP-87	44° 2.394' N	115° 35.950' W				
DP-88	44° 2.148' N	115° 32.401' W				
DP-89	43° 59.550' N	115° 36.350' W				
DP-90	43° 57.527' N	115° 37.857' W				
DP-91	44° 2.028' N	115° 30.112' W				
DP-92	43° 56.678' N	115° 33.268' W				
DP-93	43° 56.400' N	115° 23.639' W				
DP-94	44° 2.455' N	115° 31.494' W				
DP-95	43° 55.944' N	115° 40.057' W				
DP-96	44° 3.023' N	115° 26.544' W				
DP-97	43° 55.173' N	115° 34.098' W				
DP-97	44° 4.113' N	115° 56.794' W				
DP-98	43° 54.928' N	115° 34.778' W				
DP-99	44° 4.341' N	115° 47.273' W				

ICP/CAMPS	Drop Point	Helicopter	Incident Command Post	Completed Line	Uncontrolled Fire Edge	Highway
Garden Valley ICP	44° 5.300' N	115° 57.784' W				
Idaho City ICP	43° 49.554' N	115° 50.415' W				
Coulter Spike	44° 0.111' N	115° 44.874' W				
DP-70 Spike	44° 0.106' N	115° 42.005' W				
Lowman Spike	44° 4.944' N	115° 37.305' W				

HELIBASES	Drop Point	Helicopter	Incident Command Post	Completed Line	Uncontrolled Fire Edge	Highway
Cascade Helibase	44° 29.540' N	116° 0.980' W				
Idaho City Helibase	43° 49.429' N	115° 50.706' W				
North Zone Helibase	44° 5.056' N	115° 57.587' W				

MOBILE RETARDANT BASE	Drop Point	Helicopter	Incident Command Post	Completed Line	Uncontrolled Fire Edge	Highway
Centerville Mobile Retardant Base	43° 53.317' N	115° 54.575' W				

LOOKOUTS	Drop Point	Helicopter	Incident Command Post	Completed Line	Uncontrolled Fire Edge	Highway
Jackson Peak Lookout	44° 4.673' N	115° 24.831' W				
Scott Mountain Lookout	44° 10.882' N	115° 47.326' W				
Silver Creek Lookout	44° 23.087' N	115° 47.360' W				
Whitehawk Lookout	44° 17.246' N	115° 31.843' W				
Windy Point	44° 5.055' N	115° 44.376' W				

REPEATERS	Drop Point	Helicopter	Incident Command Post	Completed Line	Uncontrolled Fire Edge	Highway
C-1	43° 57.934' N	115° 45.214' W				
C-2	43° 57.599' N	115° 41.218' W				
C-3	44° 0.177' N	115° 45.428' W				
C-4	43° 53.938' N	115° 38.804' W				
C-5	44° 4.643' N	115° 24.759' W				
C-6	44° 5.725' N	115° 42.407' W				

MOBILE WEATHER STATIONS	Drop Point	Helicopter	Incident Command Post	Completed Line	Uncontrolled Fire Edge	Highway
IRAWS 25 Fortenberry	44° 4.173' N	115° 40.537' W				
IRAWS 26 Pilot Peak	43° 57.605' N	115° 41.220' W				
IRAWS 35 Jackson Ridge	44° 2.151' N	115° 30.773' W				
IRAWS 36 Charlotte	44° 1.673' N	115° 48.235' W				
IRAWS 43 Lowman Spike	44° 4.986' N	115° 37.380' W				

OTHER	Drop Point	Helicopter	Incident Command Post	Completed Line	Uncontrolled Fire Edge	Highway
BOR Com Site	44° 10.471' N	115° 45.099' W				
Super Trees	44° 11.104' N	115° 46.554' W				
Super Trees	44° 10.814' N	115° 45.650' W				
Super Trees	44° 10.803' N	115° 45.583' W				
Banner Mine	44° 1.163' N	115° 31.927' W				
HazMat Site	44° 5.208' N	115° 36.511' W				
King Mine (HazMat Site)	43° 57.887' N	115° 42.557' W				

South Zone