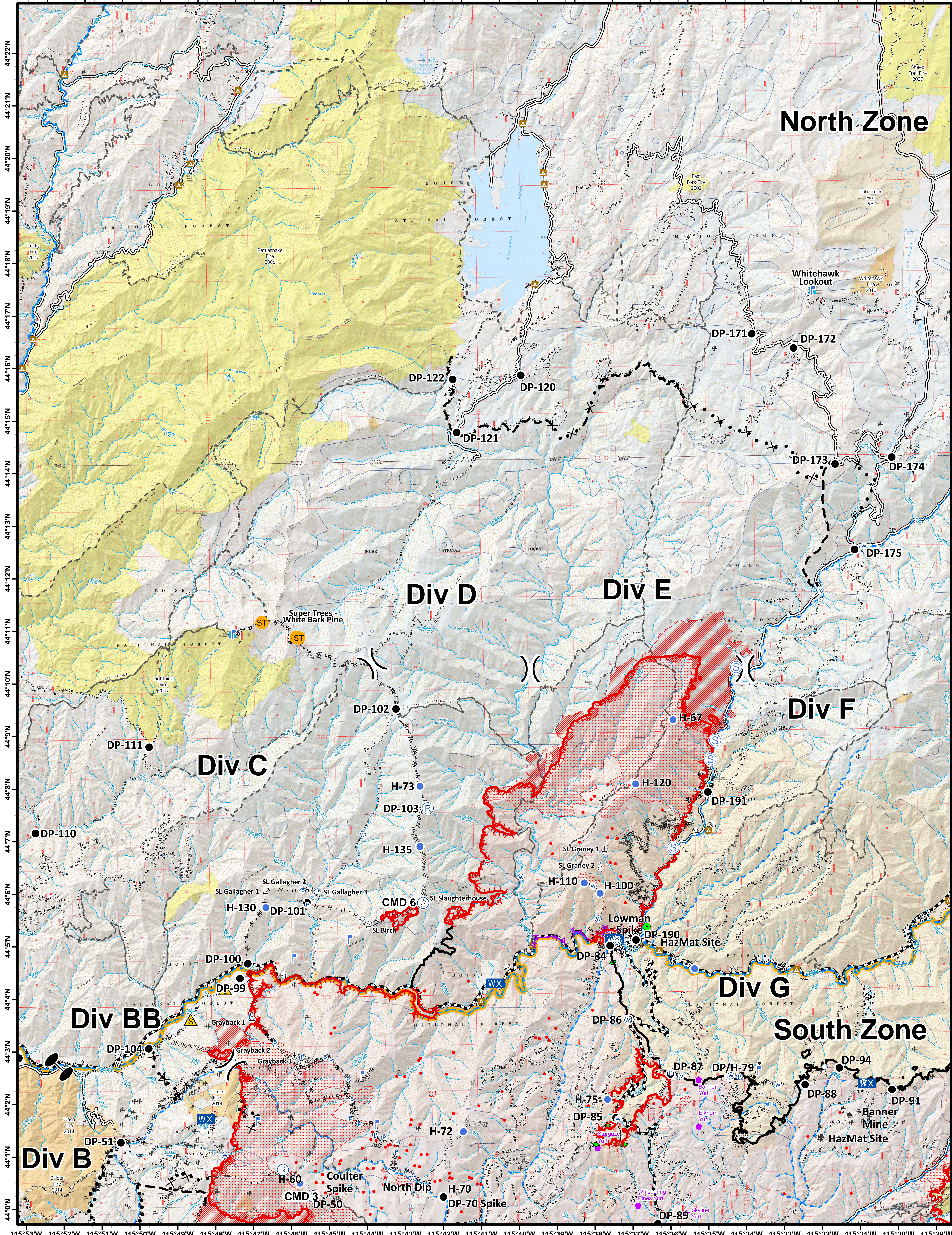


115°52'W 115°51'W 115°50'W 115°49'W 115°48'W 115°47'W 115°46'W 115°45'W 115°44'W 115°43'W 115°42'W 115°41'W 115°40'W 115°39'W 115°38'W 115°37'W 115°36'W 115°35'W 115°34'W 115°33'W 115°32'W 115°31'W 115°30'W 115°29'W

**Pioneer Fire
North Zone
ID-BOF-000539
Planning Map
August 23, 2016
100,367 acres
IR Perimeter: 08/23/2016 0219**



- Division
 - Zone
 - Camp
 - Staging
 - Drop Point
 - Helispot
 - Mobile Weather Unit
 - Pump
 - Sling Site
 - Water Source
 - HAZARD
 - Lookout
 - Uncontrolled Fire Edge
 - Completed Dozer Line
 - Completed Line
 - Hand Line
 - Road as Completed Line
 - Aerial Hazard
 - Masticator Line
 - Zone Boundary
 - Bull Trout Streams
 - Lookout
 - Campground
 - Yurt
 - Mine
- Fire History**
- 1989-1999
 - 2000-2009
 - 2010-2015
- ADS Damage Layer**
- ADS Damage Layer
- IR Data**
- Isolated Heat
 - Scattered Heat
 - Intense Heat

