

116°40'W 116°20'W 116°00'W 115°58'W 115°56'W 115°54'W 115°52'W 115°50'W 115°48'W 115°46'W 115°44'W 115°42'W 115°40'W 115°38'W 115°36'W 115°34'W 115°32'W 115°30'W 115°28'W 115°26'W 115°24'W 115°22'W 115°20'W 115°18'W 115°16'W 115°14'W 115°12'W 115°10'W

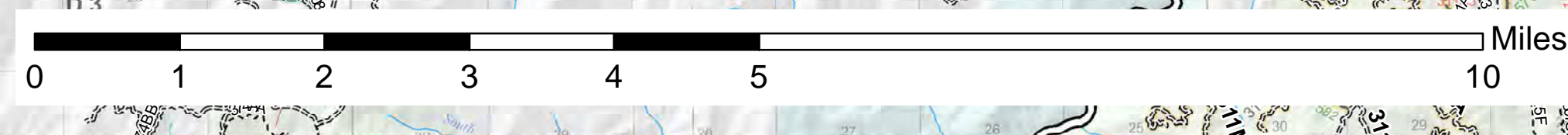
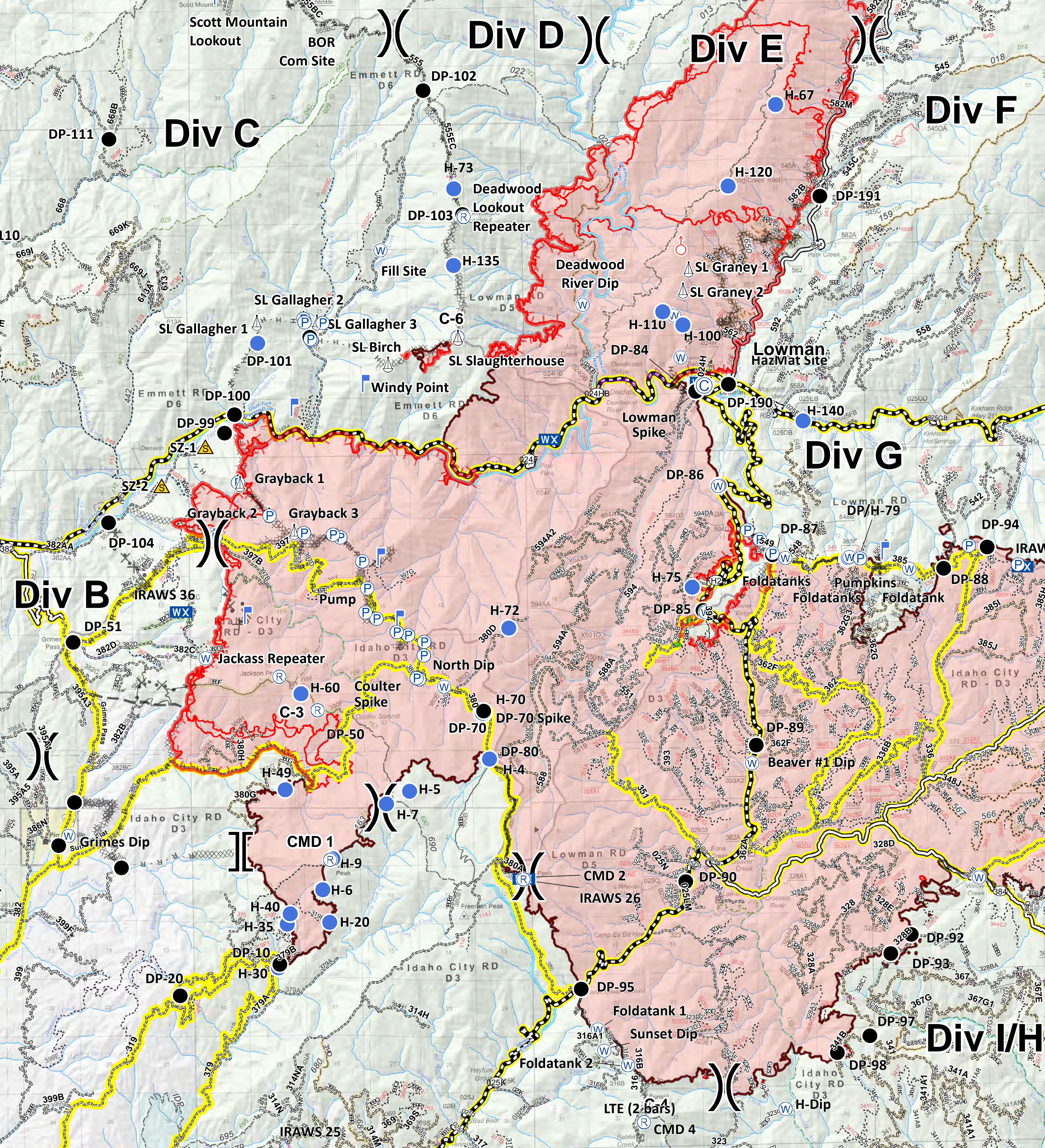
Pioneer Fire
ID-BOF-000539
Transportation Map
August 23, 2016
100,367 Acres



- Branch Break
- Division Break
- Camp
- Drop Point
- Helibase
- Helispot
- Incident Command Post
- Lookout
- Mobile Weather Unit
- Pump
- Repeater
- Safety Zone
- Sling Site
- Spot Fire
- Water Source
- Aerial Hazard
- Completed Dozer Line
- Completed Line
- Hand Line
- Other
- Planned Fire Line
- Plow Line
- Proposed Dozer Line
- Road as Completed Line
- Uncontrolled Fire Edge
- Highway
- All Vehicle Roads
- High Clearance Roads
- Closed Road
- Motorized Trail
- Non-Motorized Trail
- Secondary Travel Routes
- River
- Streams
- Pioneer Fire Perimeter

North Zone

South Zone



INTERAGENCY INCIDENT MANAGEMENT TEAM
GREAT BASIN
TEAM 6

North Zone Maps

Author: sedwards
Produced: 8/23/2016 1241

116°60'W 116°40'W 116°20'W 116°00'W 115°58'W 115°56'W 115°54'W 115°52'W 115°50'W 115°48'W 115°46'W 115°44'W 115°42'W 115°40'W 115°38'W 115°36'W 115°34'W 115°32'W 115°30'W 115°28'W 115°26'W 115°24'W 115°22'W 115°20'W 115°18'W 115°16'W 115°14'W 115°12'W