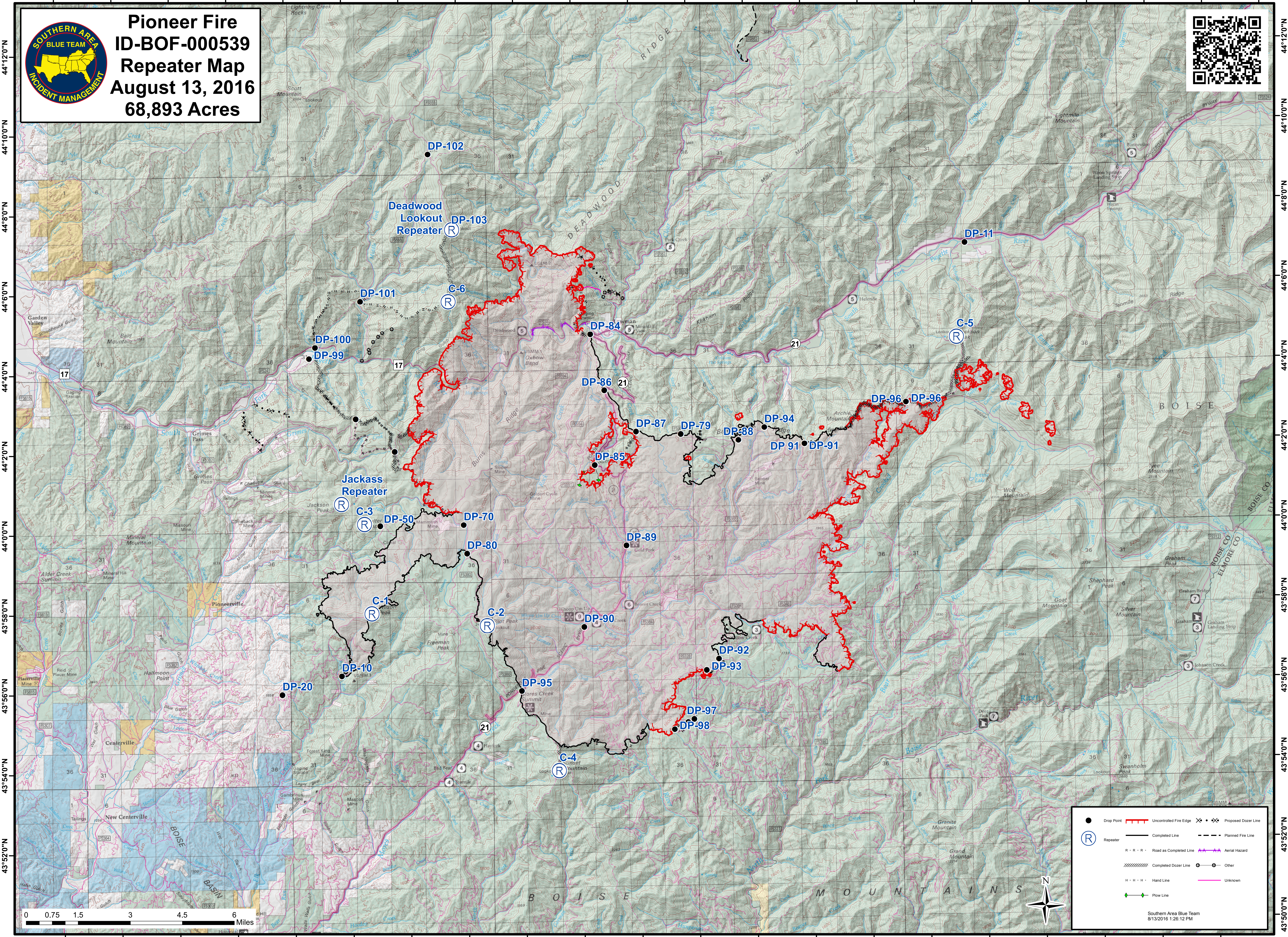


115°56'0"W 115°54'0"W 115°52'0"W 115°50'0"W 115°48'0"W 115°46'0"W 115°44'0"W 115°42'0"W 115°40'0"W 115°38'0"W 115°36'0"W 115°34'0"W 115°32'0"W 115°30'0"W 115°28'0"W 115°26'0"W 115°24'0"W 115°22'0"W 115°20'0"W 115°18'0"W 115°16'0"W 115°14'0"W



Pioneer Fire
ID-BOF-000539
Repeater Map
August 13, 2016
68,893 Acres



0 0.75 1.5 3 4.5 6 Miles



●	Drop Point	—	Uncontrolled Fire Edge	✕ ✕ ✕ ✕	Proposed Dozer Line
Ⓡ	Repeater	—	Completed Line	- - -	Planned Fire Line
R - R - R	Road as Completed Line	—	Aerial Hazard	○	Other
⊗ ⊗ ⊗ ⊗ ⊗	Completed Dozer Line	—	Hand Line	—	Unknown
H - H - H - H	Hand Line	—	Flow Line	—	
—	Flow Line				

Southern Area Blue Team
8/13/2016 1:26:12 PM

115°56'0"W 115°54'0"W 115°52'0"W 115°50'0"W 115°48'0"W 115°46'0"W 115°44'0"W 115°42'0"W 115°40'0"W 115°38'0"W 115°36'0"W 115°34'0"W 115°32'0"W 115°30'0"W 115°28'0"W 115°26'0"W 115°24'0"W 115°22'0"W 115°20'0"W 115°18'0"W 115°16'0"W 115°14'0"W