

114°35'30"W




114°35'0"W

114°34'30"W


114°34'0"W

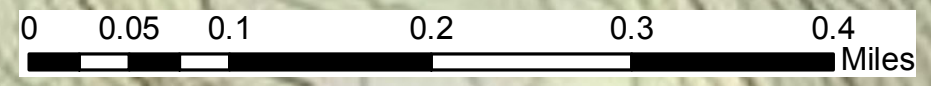
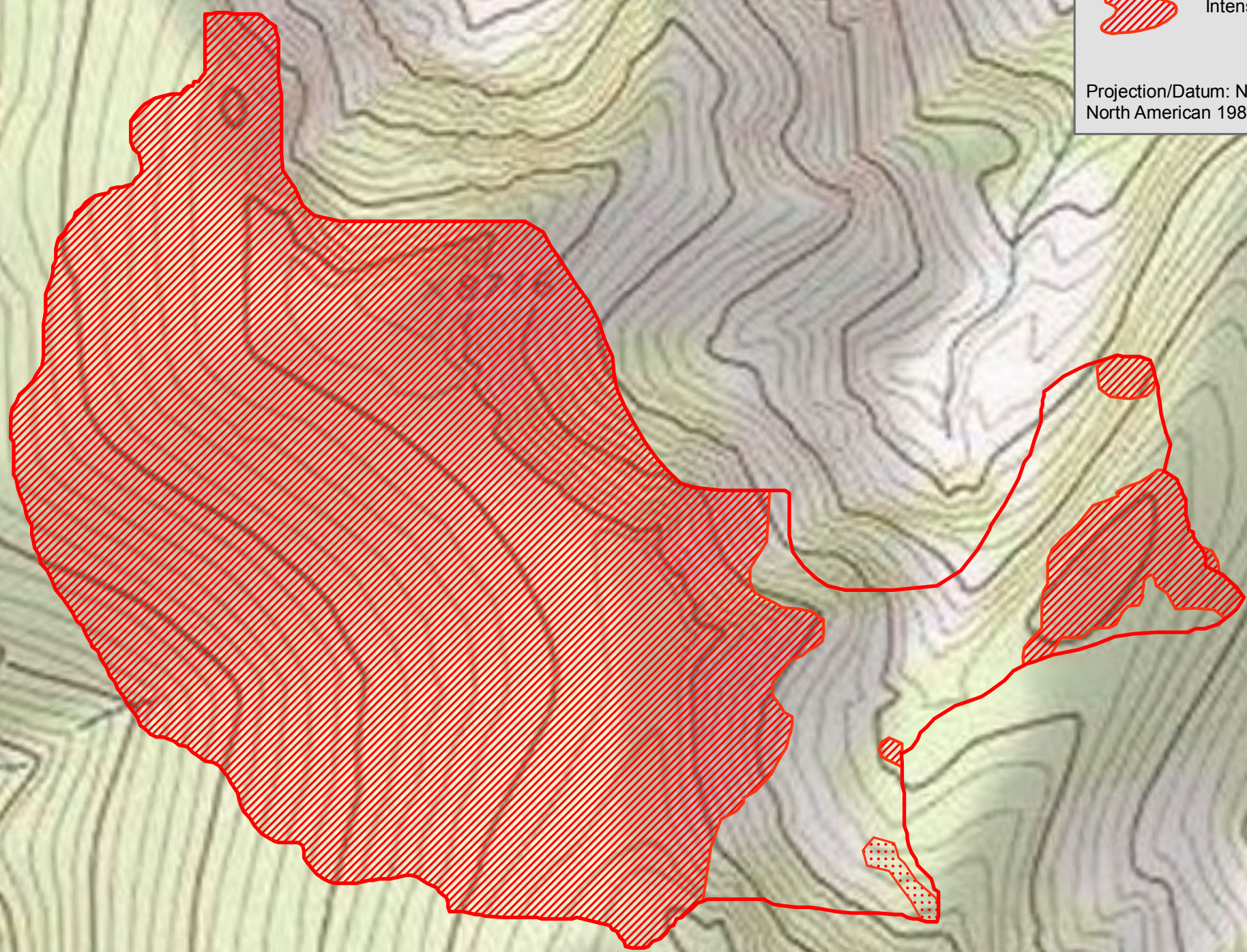
ROARING FIRE INFRARED MAP
 IR Flight July 30 @ 2229 MDT ~ 186.68 acres

Legend

-  Heat Perimeter
-  Intense Heat
-  Scattered Heat

Projection/Datum: NAD 1983 UTM Zone 11N // North American 1983

 KP SLEZAK, IRIN



Copyright © 2013 National Geographic Society, i-cubed

45°14'30"N

45°14'30"N

45°14'0"N

45°14'0"N

114°35'30"W

114°35'0"W

114°34'30"W

114°34'0"W