

114°37'0"W

114°36'30"W

114°36'0"W

114°35'30"W

114°35'0"W

114°34'30"W

114°34'0"W

114°33'30"W



# Roaring Incident ID-SCF-016203 Infrared Map



Imagery Date: 8/18/2016 @ 2237 MDT  
Interpreted Acres: 2,058 acres  
IRIN: Maximilian Wahlberg

45°15'0"N

45°14'30"N

45°14'0"N

45°13'30"N

45°13'0"N

45°12'30"N

45°12'0"N

45°11'30"N

45°11'0"N

45°15'0"N

45°14'30"N

45°14'0"N

45°13'30"N

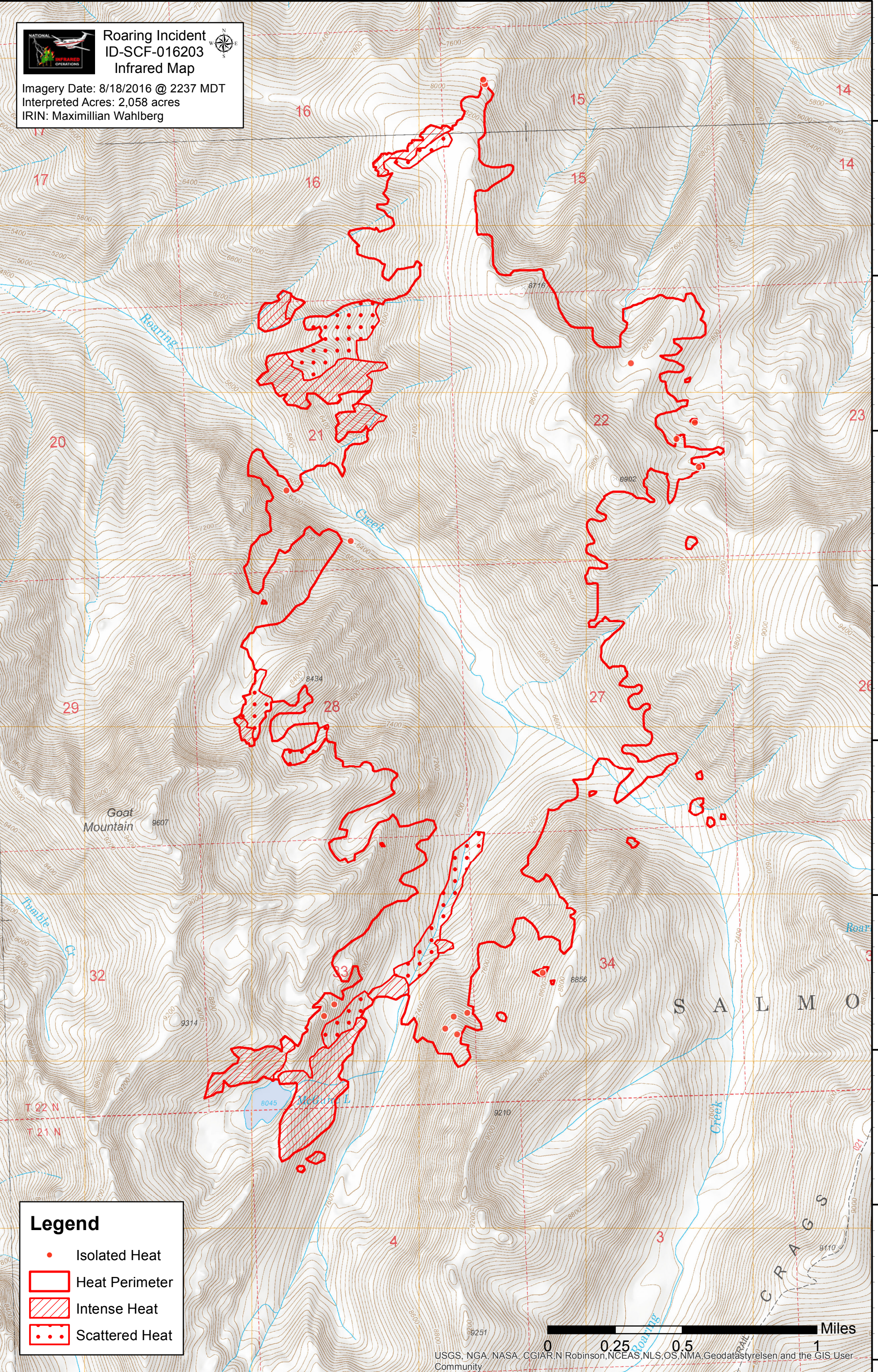
45°13'0"N

45°12'30"N

45°12'0"N

45°11'30"N

45°11'0"N



**Legend**

- Isolated Heat
- Heat Perimeter
- Intense Heat
- Scattered Heat

0 0.25 0.5 1 Miles

USGS, NGA, NASA, CGIAR, N Robinson, NCEAS, NLS, OS, NMA, Geodatastyrelsen and the GIS User Community

114°37'30"W 114°37'0"W 114°36'30"W 114°36'0"W 114°35'30"W 114°35'0"W 114°34'30"W 114°34'0"W