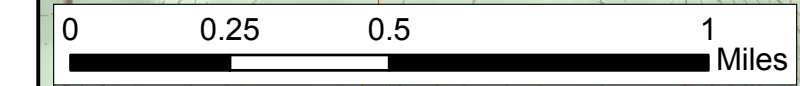
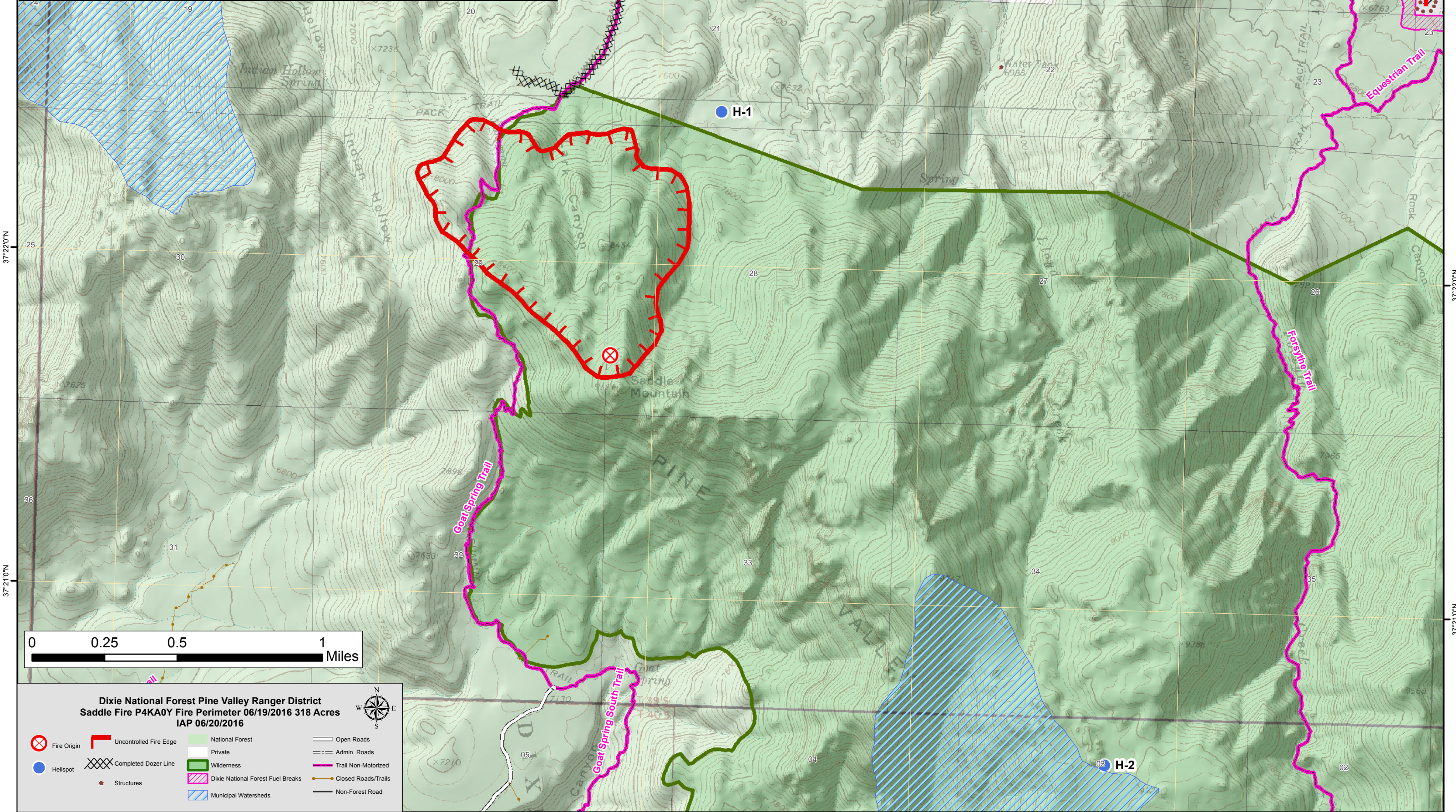


113°35'0"W 113°34'0"W 113°33'0"W 113°32'0"W 113°31'0"W

	Latitude	Longitude	Elevation	Restriction
Helibase	37 25.188	-113 29.640	6900	
H-1	37 22.464	-113 32.760	7500	Type III Only
H-2	37 20.536	-113 31.267	8800	Type II and Type III
Baker Reservoir Dip Site	37 22.707	-113 38.285	4900	
Pine Valley Draft Site	37 23.056	-113 29.030		



**Dixie National Forest Pine Valley Ranger District
Saddle Fire P4KA0Y Fire Perimeter 06/19/2016 318 Acres
IAP 06/20/2016**

Fire Origin	Uncontrolled Fire Edge	National Forest	Open Roads
Helispot	Completed Dozer Line	Private	Admin. Roads
Structures	Wilderness	Dixie National Forest Fuel Breaks	Trail Non-Motorized
Municipal Watersheds	Closed Roads/Trails	Non-Forest Road	

113°35'0"W 113°34'0"W 113°33'0"W 113°32'0"W 113°31'0"W