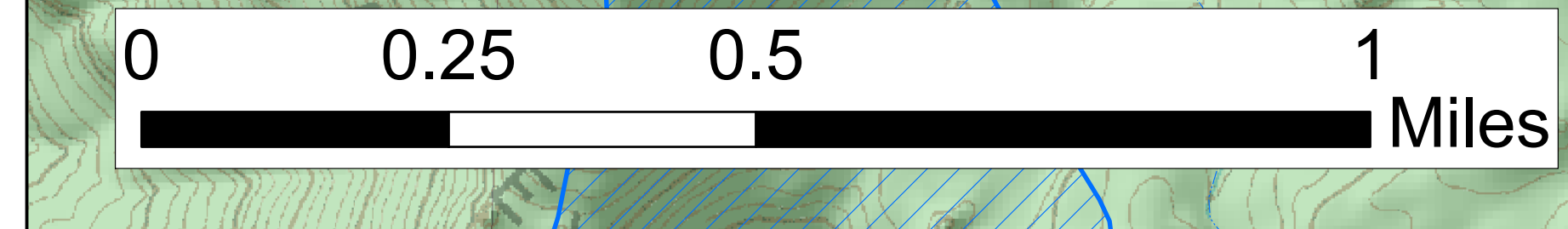
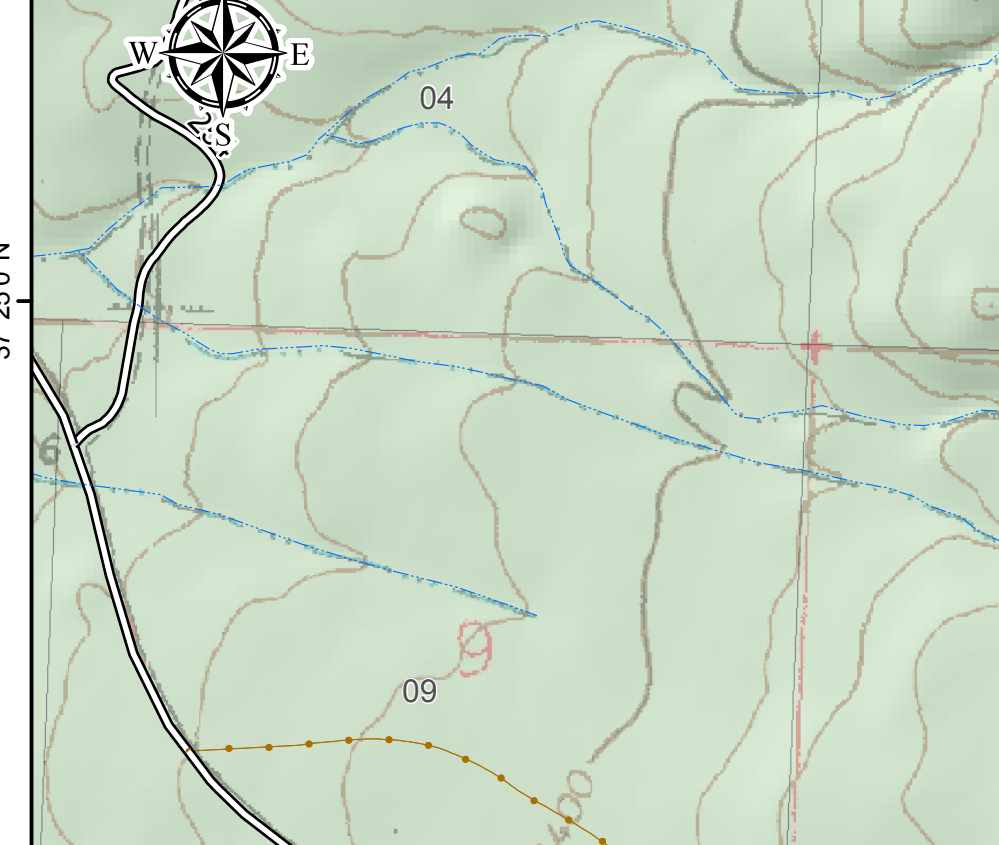


113°32'0"W 113°31'0"W 113°30'0"W 113°29'0"W 113°28'0"W



Dixie National Forest Pine Valley Ranger District Pine Valley Fuel Break Proposal			
	Existing Fuel Break		Perennial Streams
	Fuel Break-1058 Acres		Intermittent Streams
	Feathering-676 Acres		National Forest
	Structures		Private
	Municipal Watersheds		Wilderness
	Open Roads		Trail Non-Motorized
	Admin. Roads		Closed Roads/Trails
	Non-Forest Road		

113°32'0"W 113°31'0"W 113°30'0"W 113°29'0"W 113°28'0"W