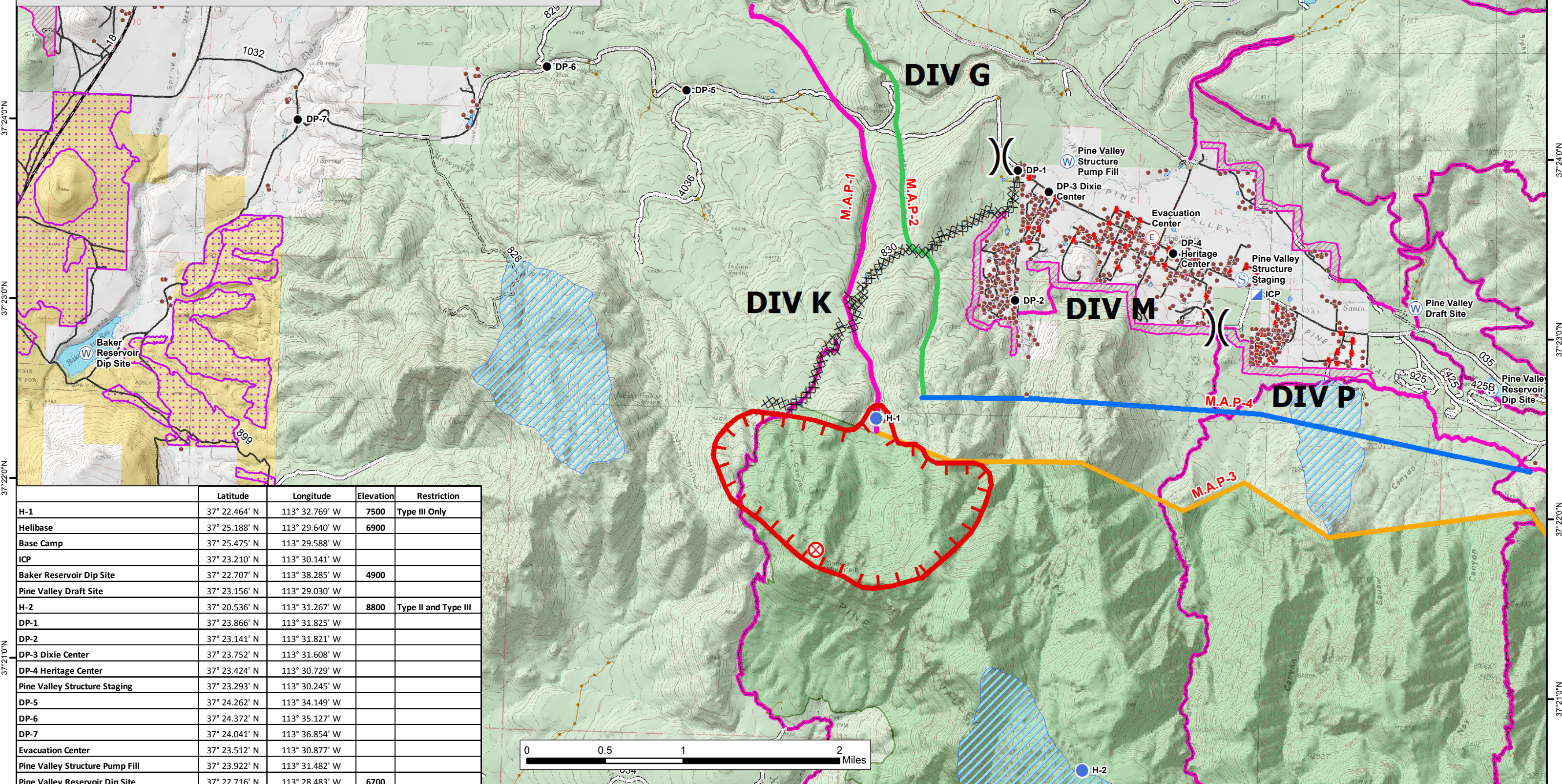


Dixie National Forest Pine Valley Ranger District
Saddle Fire P4KA0Y Fire Perimeter 06/22/2016 1100 823 Acres
IAP 06/23/2016



- Division
- Incident Base
- ICP
- Fire Origin
- Drop Point
- Helibase
- Evacuation Center
- Uncontrolled Fire Edge
- Completed Dozer Line
- Perimeter Sector
- Structures
- Hydrants
- BLM Vegetation Treatments
- Dixie National Forest Fuel Breaks
- Highway
- Open Roads
- Admin. Roads
- Trail Non-Motorized
- Closed Roads/Trails
- Non-Forest Road
- National Forest
- BLM
- Private
- Wilderness
- Municipal Watersheds
- M.A.P-1
- M.A.P-2
- M.A.P-3
- M.A.P-4



	Latitude	Longitude	Elevation	Restriction
H-1	37° 22.464' N	113° 32.769' W	7500	Type III Only
Helibase	37° 25.188' N	113° 29.640' W	6900	
Base Camp	37° 25.475' N	113° 29.588' W		
ICP	37° 23.210' N	113° 30.141' W		
Baker Reservoir Dip Site	37° 22.707' N	113° 38.285' W	4900	
Pine Valley Draft Site	37° 23.156' N	113° 29.030' W		
H-2	37° 20.536' N	113° 31.267' W	8800	Type II and Type III
DP-1	37° 23.866' N	113° 31.825' W		
DP-2	37° 23.141' N	113° 31.821' W		
DP-3 Dixie Center	37° 23.752' N	113° 31.608' W		
DP-4 Heritage Center	37° 23.424' N	113° 30.729' W		
Pine Valley Structure Staging	37° 23.293' N	113° 30.245' W		
DP-5	37° 24.262' N	113° 34.149' W		
DP-6	37° 24.372' N	113° 35.127' W		
DP-7	37° 24.041' N	113° 36.854' W		
Evacuation Center	37° 23.512' N	113° 30.877' W		
Pine Valley Structure Pump Fill	37° 23.922' N	113° 31.482' W		
Pine Valley Reservoir Dip Site	37° 22.716' N	113° 28.483' W	6700	

