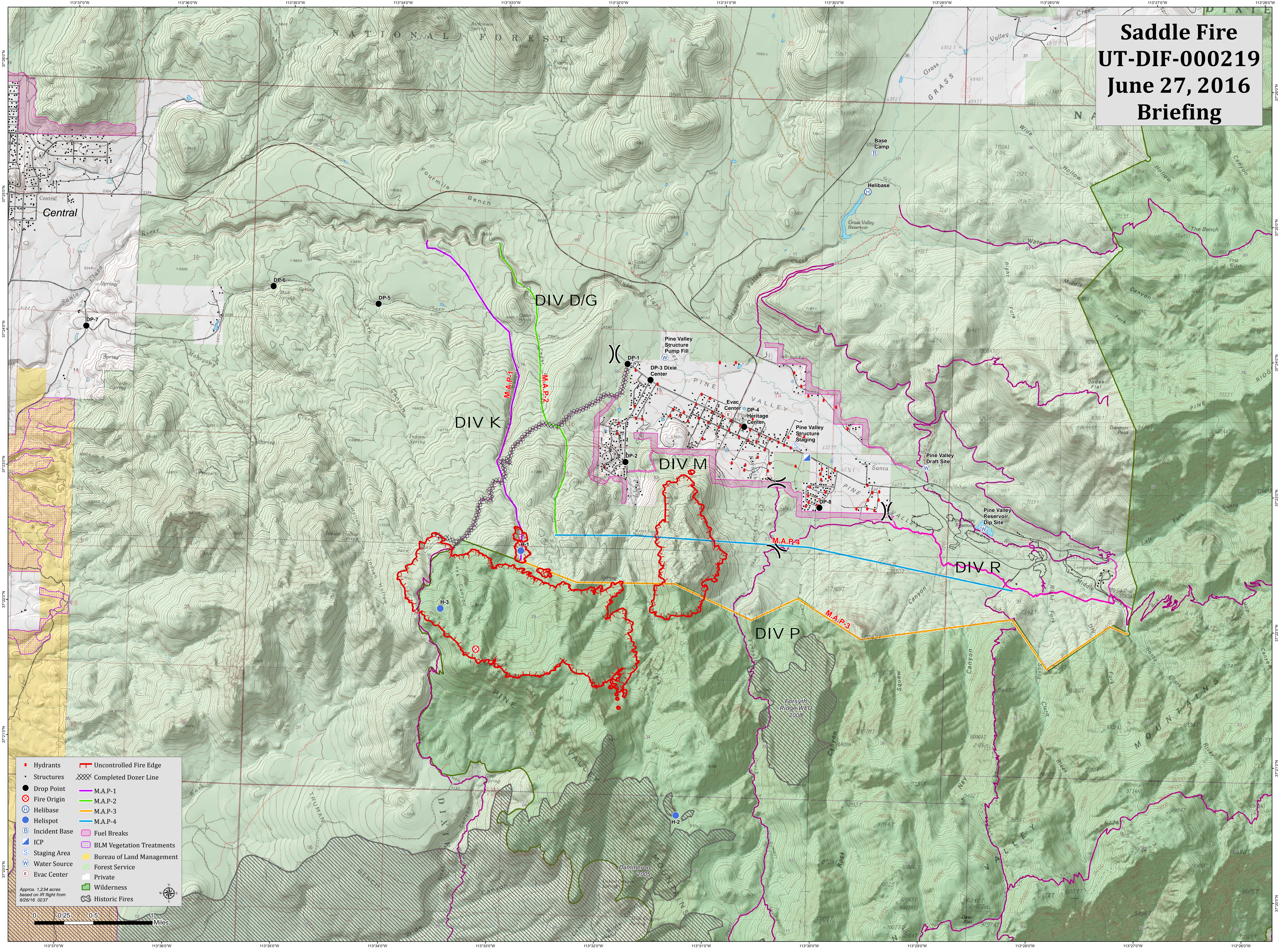


Saddle Fire UT-DIF-000219 June 27, 2016 Briefing



- Hydrants
- Structures
- Drop Point
- ⊗ Fire Origin
- ⊕ Helibase
- ⊕ Helispot
- ⊕ Incident Base
- ⊕ ICP
- ⊕ Staging Area
- ⊕ Water Source
- ⊕ Evac Center
- Uncontrolled Fire Edge
- Completed Dozer Line
- M.A.P-1
- M.A.P-2
- M.A.P-3
- M.A.P-4
- Fuel Breaks
- BLM Vegetation Treatments
- Bureau of Land Management
- Forest Service
- Private
- Wilderness
- Historic Fires

Approx. 1,234 acres based on IR flight from 6/26/16 0237

0 0.25 0.5 1 Miles