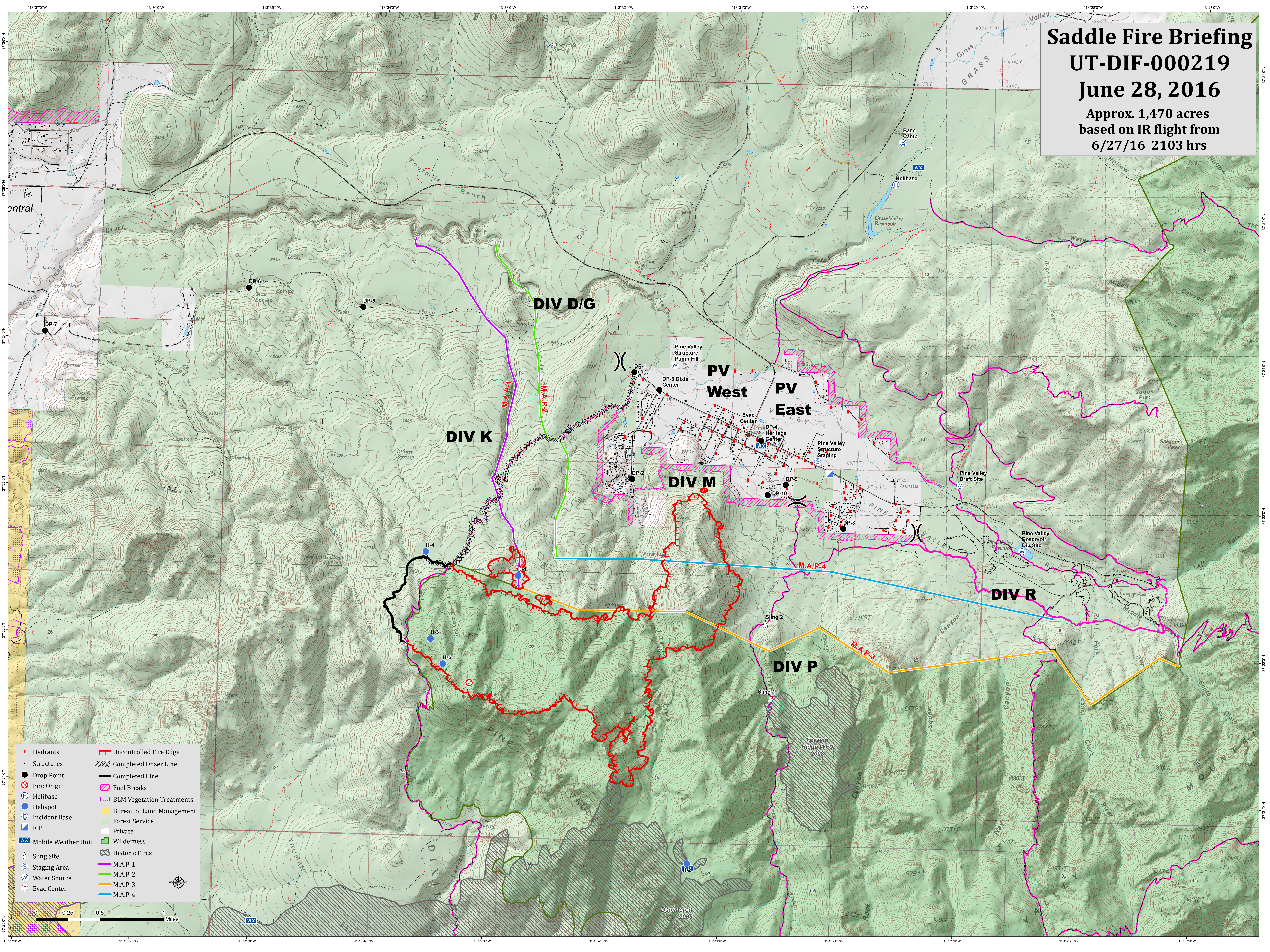


# Saddle Fire Briefing

## UT-DIF-000219

### June 28, 2016

Approx. 1,470 acres  
based on IR flight from  
6/27/16 2103 hrs



- Hydrants
- Structures
- Drop Point
- Fire Origin
- ⊕ Helibase
- ⊕ Helispot
- ⊕ Incident Base
- ⊕ ICP
- ⊕ Mobile Weather Unit
- ⊕ Sling Site
- ⊕ Staging Area
- ⊕ Water Source
- ⊕ Evac Center
- Uncontrolled Fire Edge
- XXXX Completed Dozer Line
- Completed Line
- Fuel Breaks
- ▨ BLM Vegetation Treatments
- ▨ Bureau of Land Management
- ▨ Forest Service
- ▨ Private
- ▨ Wilderness
- ▨ Historic Fires
- M.A.P.-1
- M.A.P.-2
- M.A.P.-3
- M.A.P.-4

