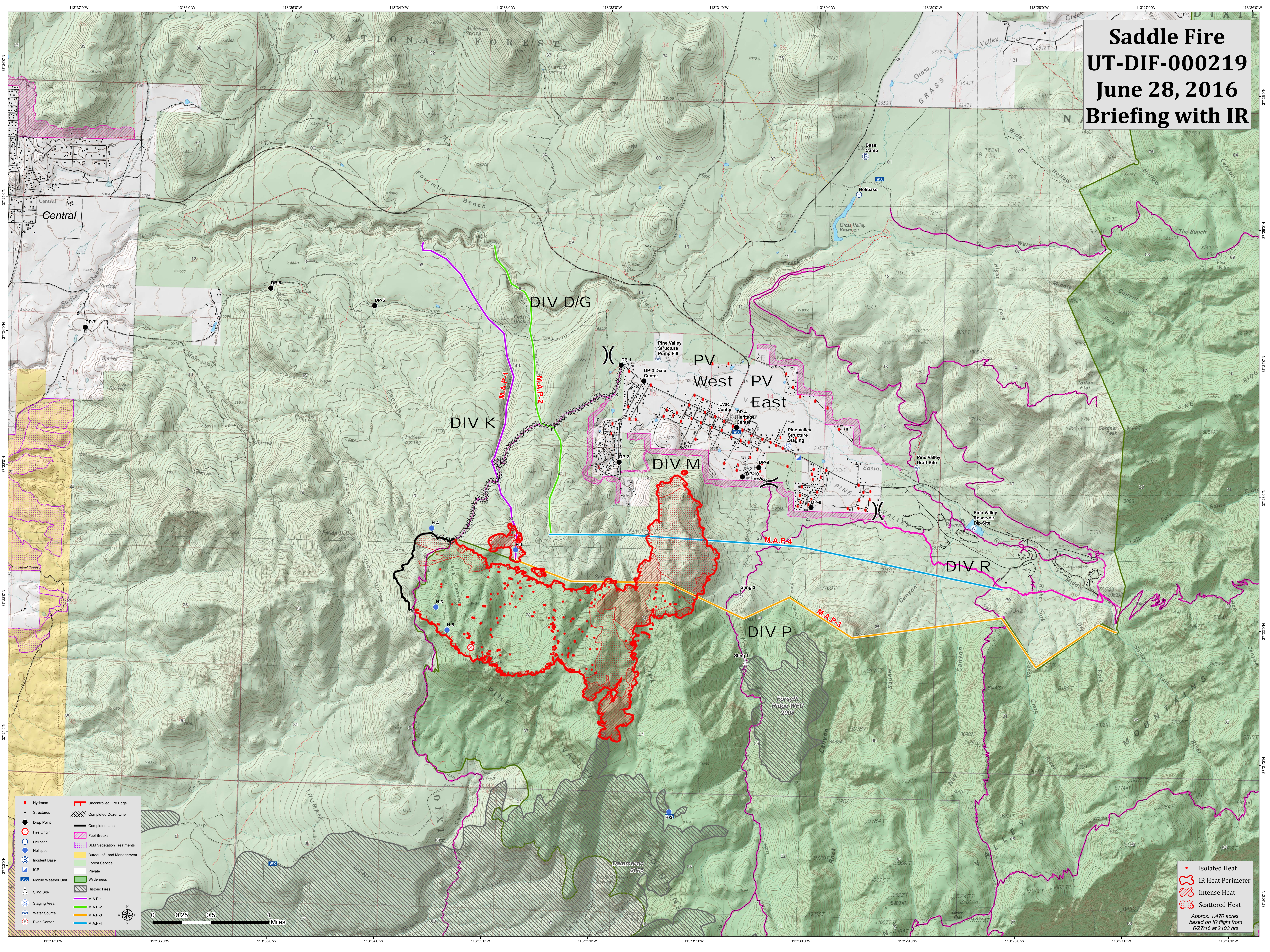


# Saddle Fire

## UT-DIF-000219

### June 28, 2016

#### Briefing with IR



- |                        |                             |
|------------------------|-----------------------------|
| ● Hydrants             | — Uncontrolled Fire Edge    |
| • Structures           | ⊗ Completed Dozer Line      |
| ● Drop Point           | — Completed Line            |
| ⊗ Fire Origin          | ▨ Fuel Breaks               |
| ⊕ Helibase             | ▨ BLM Vegetation Treatments |
| ⊕ Helispot             | ▨ Bureau of Land Management |
| ⊕ Incident Base        | ▨ Forest Service            |
| ⊕ ICP                  | ▨ Private                   |
| WX Mobile Weather Unit | ▨ Wilderness                |
| ⊕ Staging Site         | ▨ Historic Fires            |
| ⊕ Staging Area         | — M.A.P-1                   |
| ⊕ Water Source         | — M.A.P-2                   |
| ⊕ Evac Center          | — M.A.P-3                   |
|                        | — M.A.P-4                   |

- Isolated Heat
  - ⊕ IR Heat Perimeter
  - ⊕ Intense Heat
  - ⊕ Scattered Heat
- Approx. 1,470 acres based on IR flight from 6/27/16 at 2103 hrs