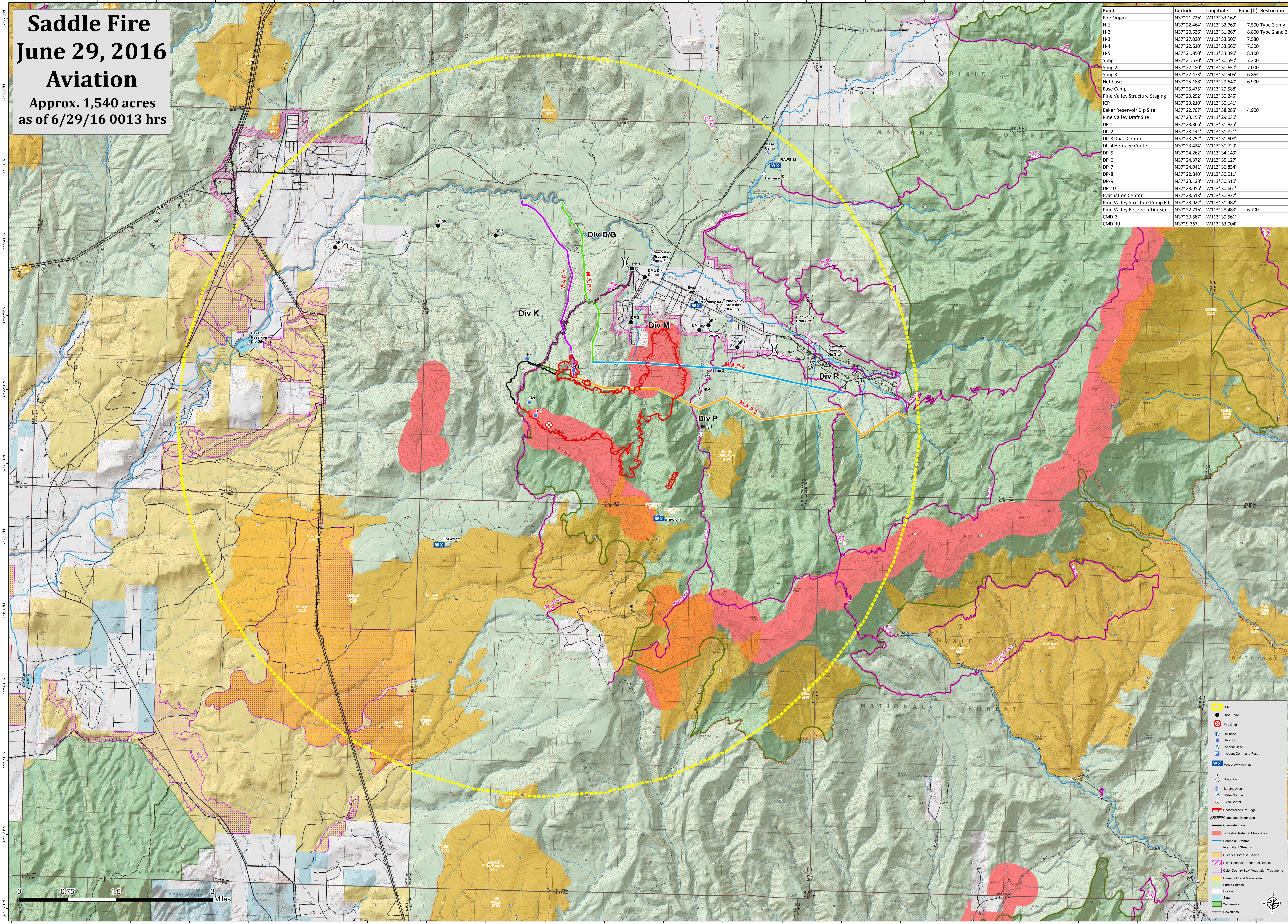


Saddle Fire June 29, 2016 Aviation

Approx. 1,540 acres
as of 6/29/16 0013 hrs

Point	Latitude	Longitude	Elev. (ft)	Restriction
Fire Origin	N37° 21.726'	W113° 33.162'		
H-1	N37° 22.464'	W113° 32.769'	7,500	Type 3 only
H-2	N37° 20.536'	W113° 31.267'	8,800	Type 2 and 3
H-3	N37° 27.000'	W113° 33.500'	7,580	
H-4	N37° 22.610'	W113° 33.560'	7,300	
H-5	N37° 21.850'	W113° 33.390'	8,100	
Sling 1	N37° 21.670'	W113° 30.590'	7,200	
Sling 2	N37° 22.180'	W113° 30.650'	7,000	
Sling 3	N37° 22.473'	W113° 30.505'	6,864	
Helibase	N37° 25.188'	W113° 29.640'	6,900	
Base Camp	N37° 25.475'	W113° 29.588'		
Pine Valley Structure Staging	N37° 23.292'	W113° 30.245'		
ICP	N37° 23.210'	W113° 30.141'		
Baker Reservoir Dip Site	N37° 22.707'	W113° 38.285'	4,900	
Pine Valley Draft Site	N37° 23.156'	W113° 29.030'		
DP-1	N37° 23.866'	W113° 31.825'		
DP-2	N37° 23.141'	W113° 31.821'		
DP-3 Dixie Center	N37° 23.752'	W113° 31.608'		
DP-4 Heritage Center	N37° 23.424'	W113° 30.729'		
DP-5	N37° 24.262'	W113° 34.149'		
DP-6	N37° 24.372'	W113° 35.127'		
DP-7	N37° 24.041'	W113° 36.854'		
DP-8	N37° 22.840'	W113° 30.011'		
DP-9	N37° 23.128'	W113° 30.510'		
DP-10	N37° 23.055'	W113° 30.661'		
Evacuation Center	N37° 23.513'	W113° 30.877'		
Pine Valley Structure Pump Fill	N37° 23.922'	W113° 31.482'		
Pine Valley Reservoir Dip Site	N37° 22.716'	W113° 28.483'	6,700	
CMD-3	N37° 30.587'	W113° 39.561'		
CMD-10	N37° 9.367'	W113° 53.004'		



Legend

- TFRR
- Drop Point
- Fire Origin
- Helibase
- Hotspot
- Incident Base
- Incident Command Post
- Mobile Weather Unit
- Sling Site
- Staging Area
- Water Source
- Evac Center
- Uncontrolled Fire Edge
- Completed Fire Line
- Completed Line
- Terrestrial Resistant Avoidance
- Perennial Streams
- Intermittent Streams
- Historical Fires >10 Acres
- Dixie National Forest Fuel Breaks
- Color County BLM Vegetation Treatments
- Bureau of Land Management
- Forest Service
- Private
- State
- Wilderness
- Powerlines

