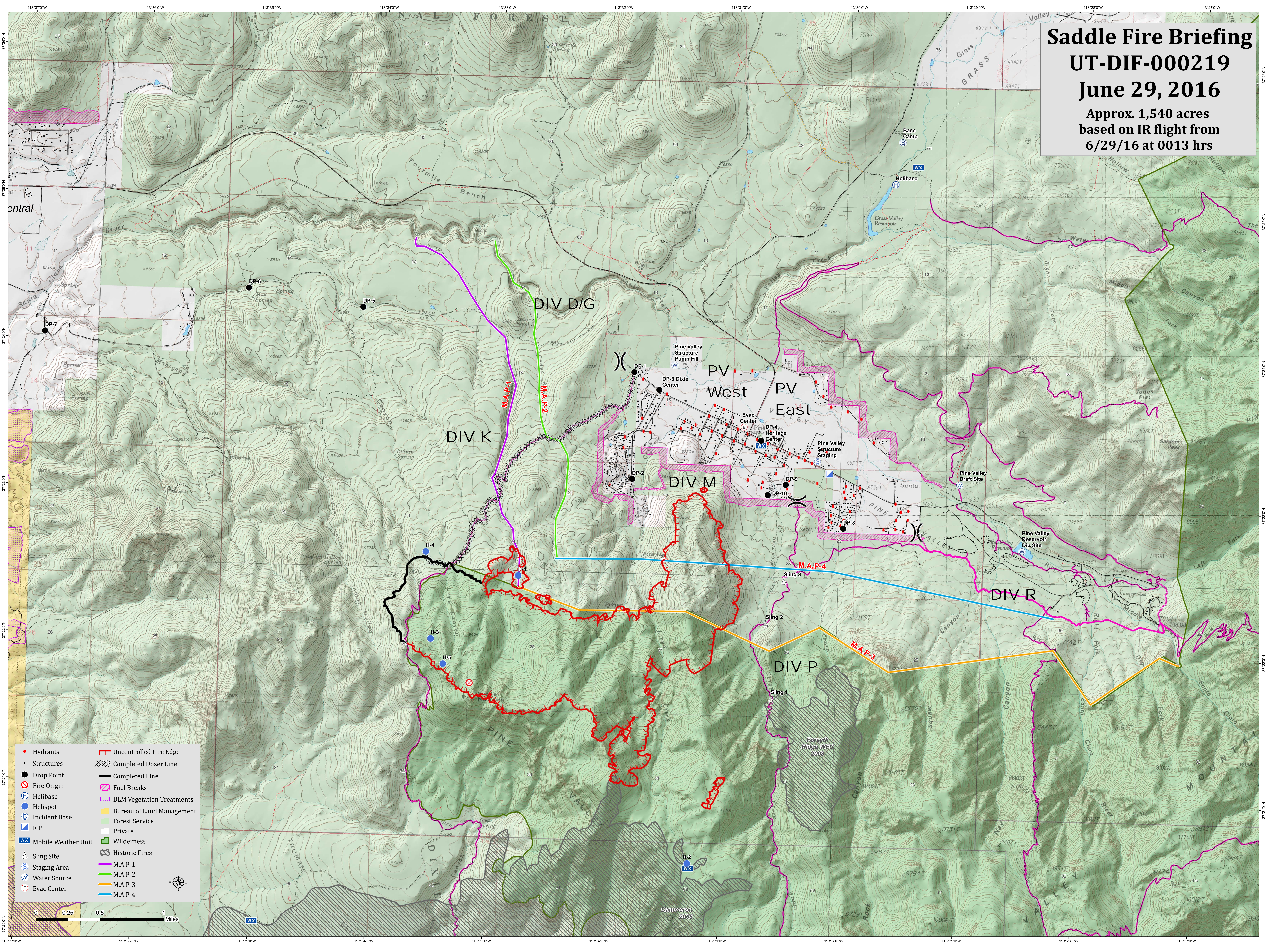


Saddle Fire Briefing

UT-DIF-000219

June 29, 2016

Approx. 1,540 acres
based on IR flight from
6/29/16 at 0013 hrs



- | | |
|-----------------------|-----------------------------|
| ● Hydrants | — Uncontrolled Fire Edge |
| • Structures | XXXX Completed Dozer Line |
| ⊙ Drop Point | — Completed Line |
| ⊗ Fire Origin | — Fuel Breaks |
| ⊕ Helibase | ▨ BLM Vegetation Treatments |
| ⊖ Helispot | ▨ Bureau of Land Management |
| ⊙ Incident Base | ▨ Forest Service |
| ⊙ ICP | ▨ Private |
| ⊙ Mobile Weather Unit | ▨ Wilderness |
| ⊙ Sling Site | ⊗ Historic Fires |
| ⊙ Staging Area | — M.A.P.-1 |
| ⊙ Water Source | — M.A.P.-2 |
| ⊙ Evac Center | — M.A.P.-3 |
| | — M.A.P.-4 |

