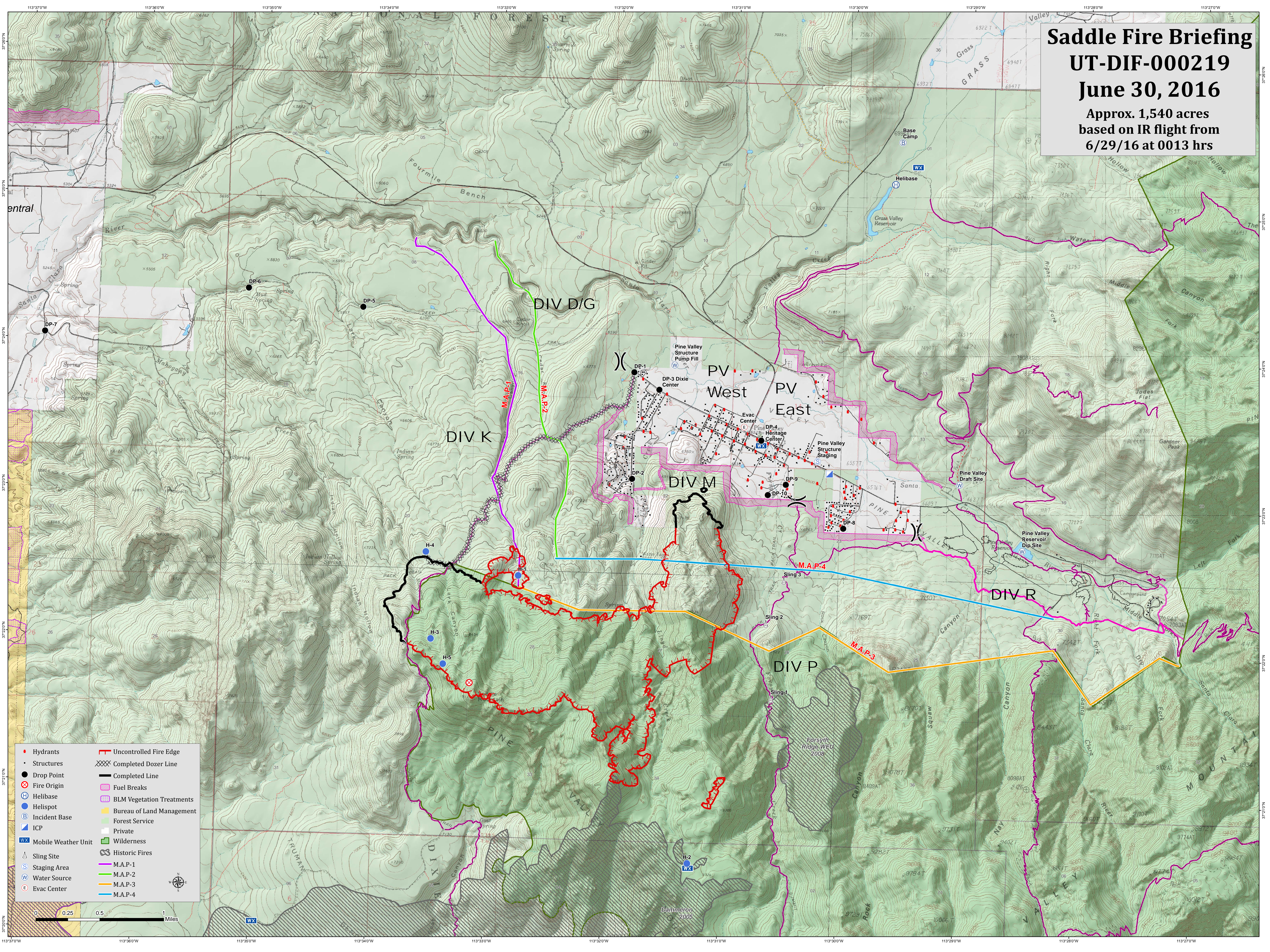


# Saddle Fire Briefing

## UT-DIF-000219

### June 30, 2016

Approx. 1,540 acres  
based on IR flight from  
6/29/16 at 0013 hrs



- |                       |                             |
|-----------------------|-----------------------------|
| ● Hydrants            | — Uncontrolled Fire Edge    |
| • Structures          | XXXX Completed Dozer Line   |
| ● Drop Point          | — Completed Line            |
| ⊗ Fire Origin         | — Fuel Breaks               |
| Ⓜ Helibase            | ▨ BLM Vegetation Treatments |
| Ⓟ Helispot            | ▨ Bureau of Land Management |
| Ⓜ Incident Base       | ▨ Forest Service            |
| Ⓜ ICP                 | ▨ Private                   |
| Ⓜ Mobile Weather Unit | ▨ Wilderness                |
| Ⓜ Sling Site          | Ⓜ Historic Fires            |
| Ⓜ Staging Area        | — M.A.P.-1                  |
| Ⓜ Water Source        | — M.A.P.-2                  |
| Ⓜ Evac Center         | — M.A.P.-3                  |
|                       | — M.A.P.-4                  |

