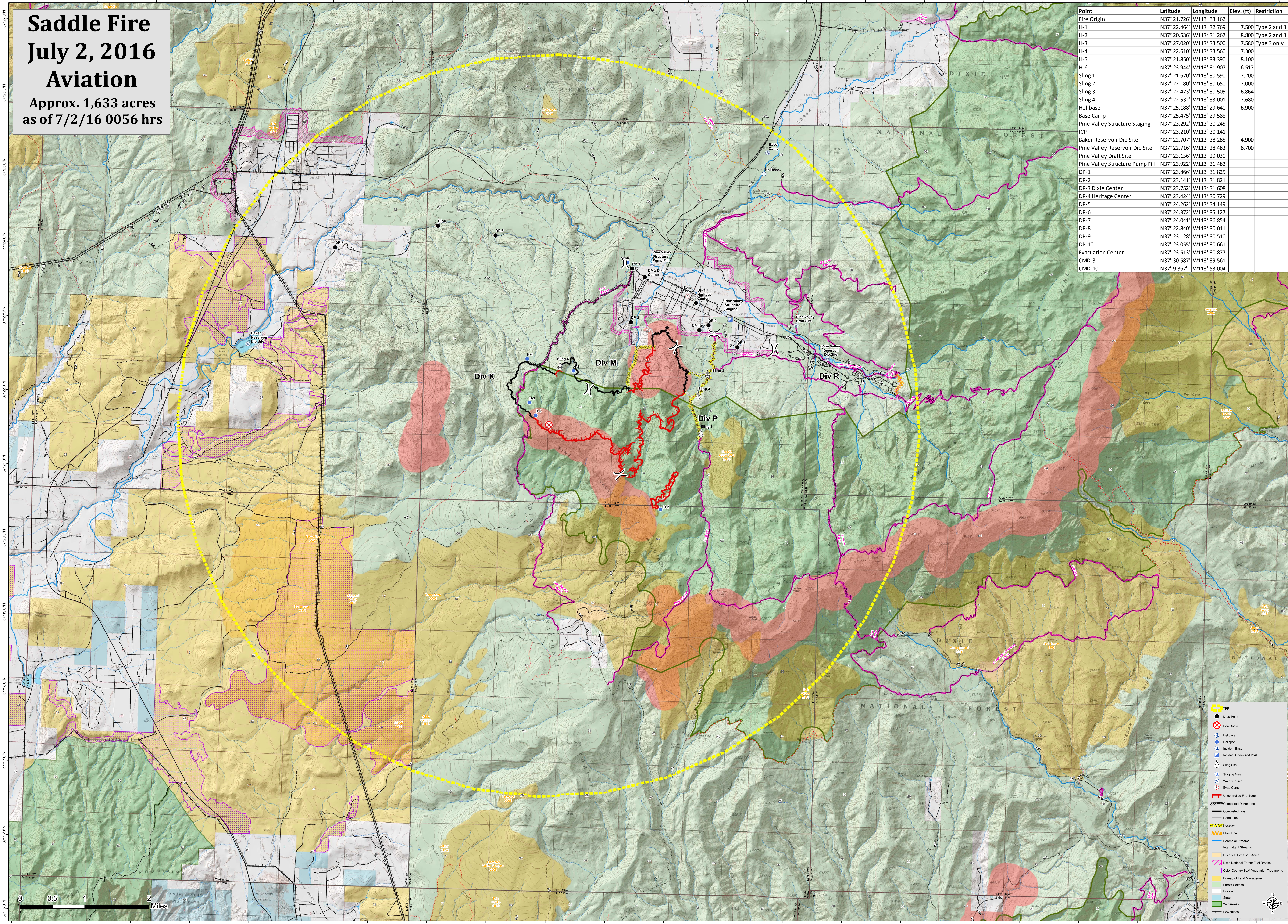


Saddle Fire July 2, 2016 Aviation

Approx. 1,633 acres
as of 7/2/16 0056 hrs

Point	Latitude	Longitude	Elev. (ft)	Restriction
Fire Origin	N37° 21.726'	W113° 33.162'		
H-1	N37° 22.464'	W113° 32.769'	7,500	Type 2 and 3
H-2	N37° 20.536'	W113° 31.267'	8,800	Type 2 and 3
H-3	N37° 27.020'	W113° 33.500'	7,580	Type 3 only
H-4	N37° 22.610'	W113° 33.560'	7,300	
H-5	N37° 21.850'	W113° 33.390'	8,100	
H-6	N37° 23.944'	W113° 31.907'	6,517	
Slings 1	N37° 21.670'	W113° 30.590'	7,200	
Slings 2	N37° 22.180'	W113° 30.650'	7,000	
Slings 3	N37° 22.473'	W113° 30.505'	6,864	
Slings 4	N37° 22.532'	W113° 33.001'	7,680	
Helibase	N37° 25.188'	W113° 29.640'	6,900	
Base Camp	N37° 25.475'	W113° 29.588'		
Pine Valley Structure Staging	N37° 23.292'	W113° 30.245'		
ICP	N37° 23.210'	W113° 30.141'		
Baker Reservoir Dip Site	N37° 22.707'	W113° 38.285'	4,900	
Pine Valley Reservoir Dip Site	N37° 22.716'	W113° 28.483'	6,700	
Pine Valley Draft Site	N37° 23.156'	W113° 29.030'		
Pine Valley Structure Pump Fill	N37° 23.922'	W113° 31.482'		
DP-1	N37° 23.866'	W113° 31.825'		
DP-2	N37° 23.141'	W113° 31.821'		
DP-3 Dixie Center	N37° 23.752'	W113° 31.608'		
DP-4 Heritage Center	N37° 23.424'	W113° 30.729'		
DP-5	N37° 24.262'	W113° 34.149'		
DP-6	N37° 24.372'	W113° 35.127'		
DP-7	N37° 24.041'	W113° 36.854'		
DP-8	N37° 22.840'	W113° 30.011'		
DP-9	N37° 23.128'	W113° 30.510'		
DP-10	N37° 23.055'	W113° 30.661'		
Evacuation Center	N37° 23.513'	W113° 30.877'		
CMD-3	N37° 30.587'	W113° 39.561'		
CMD-10	N37° 9.367'	W113° 53.004'		



Legend

- FFR (Yellow dashed line)
- Drop Point (Black dot)
- Fire Origin (Red circle with X)
- Helibase (Blue circle with H)
- Incident Base (Blue circle with I)
- Incident Command Post (Blue circle with IC)
- Slings (Blue circle with S)
- Staging Area (Blue circle with S)
- Water Source (Blue circle with W)
- Evac Center (Red circle with E)
- Uncontrolled Fire Edge (Red dashed line)
- Completed Doser Line (Red dashed line with X)
- Completed Line (Red solid line)
- Hand Line (Black solid line)
- Pipeline (Yellow dashed line)
- Powerline (Black solid line)
- Perennial Streams (Blue line)
- Intermittent Streams (Blue dashed line)
- Historical Fires >10 Acres (Red shaded area)
- Dixie National Forest Fuel Breaks (Pink shaded area)
- Color Country BLM Vegetation Treatments (Green shaded area)
- Bureau of Land Management (Yellow shaded area)
- Forest Service (Green shaded area)
- Private (Blue shaded area)
- State (Light blue shaded area)
- Wilderness (Green shaded area)
- Powerlines (Black solid line)